

Image may be representation.  
See specifications for product details.



## MAX764EPA+

Manufacturer Part Number	<b>MAX764EPA+</b>
Manufacturer	<b>Maxim Integrated</b>
Allelco Part Number	32D-MAX764EPA+
ECAD Model	Request Free CAD Models
Parts Description	IC REG BCK BST ADJ/-5V 8DIP
Package	8-DIP (0.300", 7.62mm)
Data sheet	<b>MAX764-766.pdf</b>
RoHs Status	<b>ROHS3 Compliant</b>

**Get a Quote**

MAX764EPA+ - Analog Devices Inc./Maxim Integrated.New Original in Stock. Download Linear Technology MAX764EPA+ datasheet/specifications on AllelcoElec.com. Request a quote for MAX764EPA+, please send us email: [info@allelco.com](mailto:info@allelco.com)

### Specifications

MAX764EPA+ Tech Specifications  
MAX764EPA+ - Analog Devices Inc./Maxim Integrated technical specifications, attributes, parameters

Product Attribute	Attribute Value	Product Attribute	Attribute Value
Manufacturer	Maxim Integrated	Package	Tube
Voltage - Output (Min/Fixed)	-1V (-5V)	Output Type	Adjustable (Fixed)
Voltage - Output (Max)	-16V	Output Configuration	Negative
Voltage - Input (Min)	3V	Operating Temperature	-40°C ~ 85°C (TA)
Voltage - Input (Max)	16V	Number of Outputs	1
Topology	Buck-Boost	Mounting Type	Through Hole
Synchronous Rectifier	No	Function	Step-Up/Step-Down
Supplier Device Package	8-PDIP	Frequency - Switching	300kHz
Series	-	Current - Output	260mA
Package / Case	8-DIP (0.300", 7.62mm)	Base Product Number	MAX764

### Parts with Similar Specifications

The three parts on the right have similar specifications to Analog Devices Inc./Maxim Integrated MAX764EPA+

Product Attribute				
Part Number	MAX764EPA+	MAX765CSA+T	MAX764ESA+T	MAX765CPA+
Manufacturer	Analog Devices Inc./Maxim Integrated	Analog Devices Inc./Maxim Integrated	Analog Devices Inc./Maxim Integrated	Analog Devices Inc./Maxim Integrated
Supplier Device Package	8-PDIP	8-SOIC	8-SOIC	8-PDIP
Voltage - Output (Min/Fixed)	-1V (-5V)	-1V (-12V)	-1V (-5V)	-1V (-12V)
Base Product Number	MAX764	MAX765	MAX764	MAX765
Voltage - Input (Max)	16V	16V	16V	16V
Mounting Type	Through Hole	Surface Mount	Surface Mount	Through Hole
Synchronous Rectifier	No	No	No	No
Output Configuration	Negative	Negative	Negative	Negative
Number of Outputs	1	1	1	1
Package / Case	8-DIP (0.300", 7.62mm)	8-SOIC (0.154", 3.90mm Width)	8-SOIC (0.154", 3.90mm Width)	8-DIP (0.300", 7.62mm)
Frequency - Switching	300kHz	300kHz	300kHz	300kHz
Output Type	Adjustable (Fixed)	Adjustable (Fixed)	Adjustable (Fixed)	Adjustable (Fixed)
Topology	Buck-Boost	Buck-Boost	Buck-Boost	Buck-Boost
Function	Step-Up/Step-Down	Step-Up/Step-Down	Step-Up/Step-Down	Step-Up/Step-Down
Voltage - Input (Min)	3V	3V	3V	3V
Operating Temperature	-40°C ~ 85°C (TA)	0°C ~ 70°C (TA)	-40°C ~ 85°C (TA)	0°C ~ 70°C (TA)
Series	-	-	-	-
Package	Tube	Tape & Reel (TR)	Tape & Reel (TR)	Tube
Current - Output	260mA	120mA	260mA	120mA
Voltage - Output (Max)	-16V	-16V	-16V	-16V

### MAX764EPA+ Datasheet PDF

Download MAX764EPA+ pdf datasheets and Analog Devices Inc./Maxim Integrated documentation for MAX764EPA+ - Analog Devices Inc./Maxim Integrated.

#### Datasheets

[MAX764-766.pdf](#)

#### Environmental Information

[Maxim Integrated REACH.pdf](#)

[Maxim Integrated RoHS Cert.pdf](#)

#### Part Numbering Guide

## Application Notes

## Customers Also Interested in

### Recommended Products



#### MAX765CSA+T

Analog Devices Inc./Maxim Integrated  
IC REG BCK BST ADJ/-12V 8SOIC



#### MAX764ESA+T

Analog Devices Inc./Maxim Integrated  
IC REG BCK BST ADJ/-5V 8SOIC



#### MAX765CPA+

Analog Devices Inc./Maxim Integrated  
IC REG BCK BST ADJ/-12V 8DIP



#### MAX765EPA

Analog Devices Inc./Maxim Integrated  
IC REG BCK BST ADJ/-12V 8DIP



#### MAX765CSA+

Analog Devices Inc./Maxim Integrated  
IC REG BCK BST ADJ/-12V 8SOIC



#### MAX765CSA

Analog Devices Inc./Maxim Integrated  
IC REG BCK BST ADJ/-12V 8SOIC



#### MAX764ESA

Analog Devices Inc./Maxim Integrated  
IC REG BCK BST ADJ/-5V 8SOIC



#### MAX7645BCPP+

Analog Devices Inc./Maxim Integrated  
IC DAC CMOS BUFFERED 12BIT 20DIP



#### MAX764CSA+

Analog Devices Inc./Maxim Integrated  
IC REG BCK BST ADJ/-5V 8SOIC



#### MAX764EPA

Analog Devices Inc./Maxim Integrated  
IC REG BCK BST ADJ/-5V 8DIP



#### MAX764CSA+T

Analog Devices Inc./Maxim Integrated  
IC REG BCK BST ADJ/-5V 8SOIC



#### MAX764CPA+

Analog Devices Inc./Maxim Integrated  
IC REG BCK BST ADJ/-5V 8DIP



#### MAX764ESA+

Analog Devices Inc./Maxim Integrated  
IC REG BCK BST ADJ/-5V 8SOIC



#### MAX765CPA

Analog Devices Inc./Maxim Integrated  
IC REG BCK BST ADJ/-12V 8DIP



#### MAX7645ACPP+

Analog Devices Inc./Maxim Integrated  
IC DAC 12BIT A-OUT 20DIP



#### MAX764CPA

Analog Devices Inc./Maxim Integrated  
IC REG BCK BST ADJ/-5V 8DIP



#### MAX7645BCWP

Analog Devices Inc./Maxim Integrated  
IC DAC 12BIT A-OUT 20SOIC



#### MAX764CSA

Analog Devices Inc./Maxim Integrated  
IC REG BCK BST ADJ/-5V 8SOIC

## Shipment

### Delivery Time

In-stock items can be shipped within 24 hours. Some parts will be arranged for delivery within 1-2 days from the date all items arrive at our warehouse. And Allelco ships order once a day at about 17:00, except Sunday. Once the goods are shipped, the estimated delivery time depends on the shipping methods and Delivery destination. The table below shows are the logistic time for some common countries.

### Delivery Cost

- > Use your express account for shipment if you have one.
  - > Use our account for the shipment. Refer to the table below for the approximate charges.
- (Different time frame / countries / package size has different price.)

### Delivery Method

- > Global Common Shipment by DHL / UPS / FedEx / TNT / EMS / SF we support.
- > Others more shipping ways, please get in touch with your customer manager.

Common Countries Logistic Time Reference

Region	Country	Logistic Time(Day)
America	United States	5
	Brazil	7
Europe	Germany	5
	United Kingdom	4
	Italy	5
Oceania	Australia	6
	New Zealand	7
Asia	India	6
	Japan	7
Middle East	Israel	6

DHL & FedEx Shipment Charges Reference

Shipment charges(KG)	Reference DHL(USD\$)
0.00kg-1.00kg	USD\$60.00
1.00kg-2.00kg	USD\$70.00
2.00kg-3.00kg	USD\$80.00

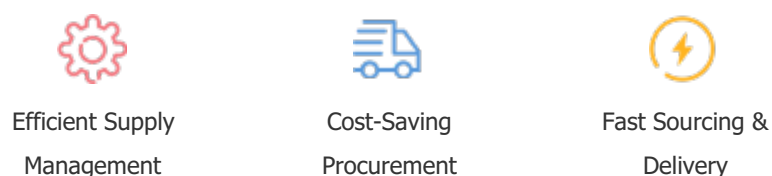
Note: The above table is for reference only. There may have some data bias for the uncontrollable factors. Contact us if you have any questions.

### Payment Support

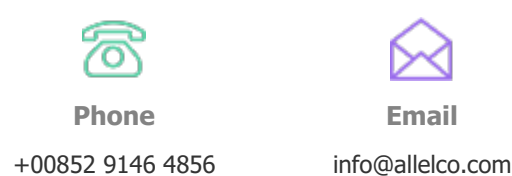
The payment method can be chosen from the methods shown below:  
Wire Transfer (T/T, Bank Transfer), Western Union, Credit card, PayPal.



### Your Faithful Supply Chain Partner -



Contact us if you have any questions.



### Certifications & Memberships



View More