



Image may be representation.
See specifications for product details.



EP1C3T144C7N

Manufacturer Part Number	EP1C3T144C7N
Manufacturer	Intel
Allelco Part Number	32D-EP1C3T144C7N
ECAD Model	Request Free CAD Models
Parts Description	IC FPGA 104 I/O 144TQFP
Package	144-LQFP
Data sheet	Virtual JTAG Megafuntion Guide.pdf Cylindrical Battery Holders.pdf

Get a Quote

EP1C3T144C7N - Intel.New Original in Stock. Download Linear Technology EP1C3T144C7N datasheet/specifications on AllelcoElec.com.
Request a quote for EP1C3T144C7N, please send us email: info@allelco.com

Specifications

EP1C3T144C7N Tech Specifications

EP1C3T144C7N - Intel technical specifications, attributes, parameters

Product Attribute	Attribute Value	Product Attribute	Attribute Value
Manufacturer	Intel	Operating Temperature	0°C ~ 85°C (TJ)
Voltage - Supply	1.425V ~ 1.575V	Number of Logic Elements/Cells	2910
Total RAM Bits	59904	Number of LABs/CLBs	291
Supplier Device Package	144-TQFP (20x20)	Number of I/O	104
Series	Cyclone®	Mounting Type	Surface Mount
Package / Case	144-LQFP	Base Product Number	EP1C3
Package	Tray		

Parts with Similar Specifications

The three parts on the right have similar specifications to Intel EP1C3T144C7N

Product Attribute				
Part Number	EP1C3T144C7N	EP1C3T144C6N	EP1C3T144I7N	EP1C3T144I7
Manufacturer	Intel	Intel	Intel	Intel
Base Product Number	EP1C3	EP1C3	EP1C3	EP1C3
Number of I/O	104	104	104	104
Total RAM Bits	59904	59904	59904	59904
Mounting Type	Surface Mount	Surface Mount	Surface Mount	Surface Mount
Supplier Device Package	144-TQFP (20x20)	144-TQFP (20x20)	144-TQFP (20x20)	144-TQFP (20x20)
Operating Temperature	0°C ~ 85°C (TJ)	0°C ~ 85°C (TJ)	-40°C ~ 100°C (TJ)	-40°C ~ 100°C (TJ)
Series	Cyclone®	Cyclone®	Cyclone®	Cyclone®
Number of LABs/CLBs	291	291	291	291
Voltage - Supply	1.425V ~ 1.575V	1.425V ~ 1.575V	1.425V ~ 1.575V	1.425V ~ 1.575V
Number of Logic Elements/Cells	2910	2910	2910	2910
Package	Tray	Tray	Tray	Tray
Package / Case	144-LQFP	144-LQFP	144-LQFP	144-LQFP

EP1C3T144C7N Datasheet PDF

Download EP1C3T144C7N pdf datasheets and Intel documentation for EP1C3T144C7N - Intel.

Datasheets

[Virtual JTAG Megafuntion Guide.pdf](#)

PCN Packaging

[All Dev Pkg Chg 1/Aug/2018.pdf](#)

[Mult Dev Dessicant Chg 19/Jul/2019.pdf](#)

PCN Design/Specification

[Mult Series Software Chgs 26/Mar/2020.pdf](#)

HTML Datasheet

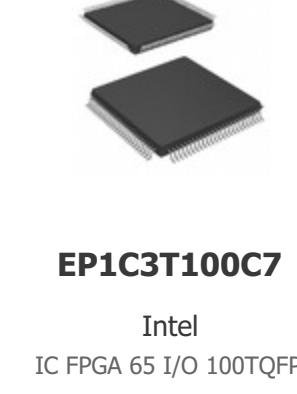
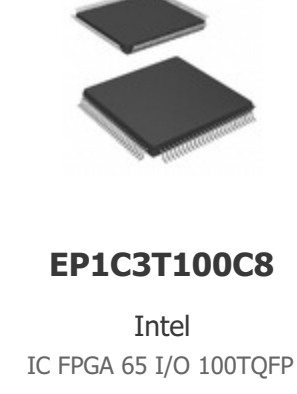
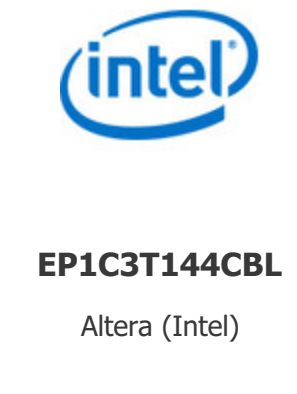
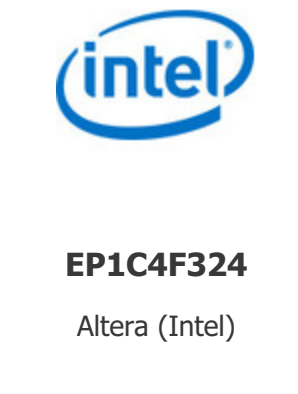
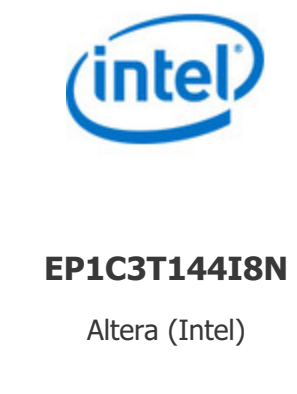
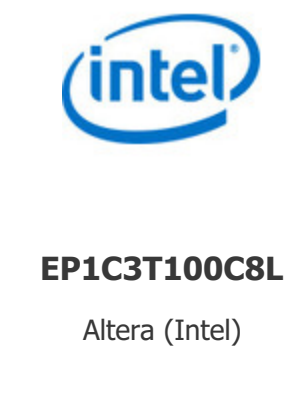
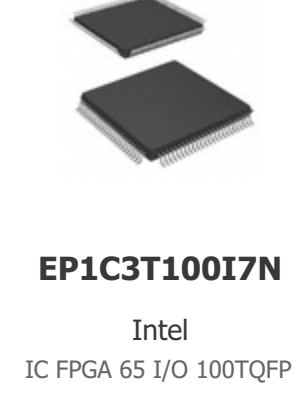
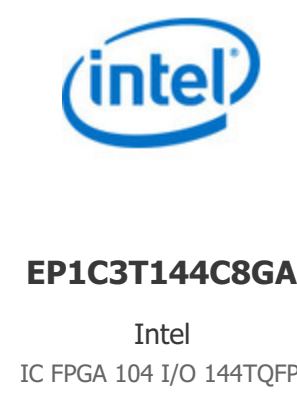
[Cylindrical Battery Holders.pdf](#)

PCN Assembly/Origin

[2.73KHz.pdf](#)

Customers Also Interested in

Recommended Products



Shipment

Delivery Time

In-stock items can be shipped within 24 hours. Some parts will be arranged for delivery within 1-2 days from the date all items arrive at our warehouse. And Allelco ships order once a day at about 17:00, except Sunday. Once the goods are shipped, the estimated delivery time depends on the shipping methods and Delivery destination. The table below shows are the logistic time for some common countries.

Delivery Cost

> Use your express account for shipment if you have one.

> Use our account for the shipment. Refer to the table below for the approximate charges.

(Different time frame / countries / package size has different price.)

Delivery Method

> Global Common Shipment by DHL / UPS / FedEx / TNT / EMS / SF we support.

> Others more shipping ways, please get in touch with your customer manager.

Common Countries Logistic Time Reference		
Region	Country	Logistic Time(Day)
America	United States	5
	Brazil	7
Europe	Germany	5
	United Kingdom	4
	Italy	5
Oceania	Australia	6
	New Zealand	7
Asia	India	6
	Japan	7
Middle East	Israel	6

DHL & FedEx Shipment Charges Reference	
Shipment charges(KG)	Reference DHL(USD\$)
0.00kg-1.00kg	USD\$60.00
1.00kg-2.00kg	USD\$70.00
2.00kg-3.00kg	USD\$80.00

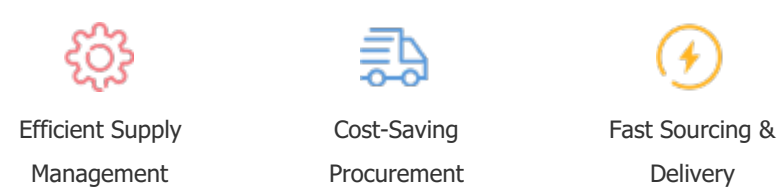
Note: The above table is for reference only. There may have some data bias for the uncontrollable factors.
Contact us if you have any questions.

Payment Support

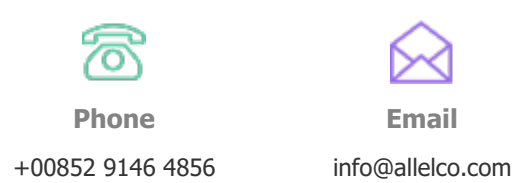
The payment method can be chosen from the methods shown below:
Wire Transfer (T/T, Bank Transfer), Western Union, Credit card, PayPal.



Your Faithful Supply Chain Partner -



Contact us if you have any questions.



Certifications & Memberships



[View More](#)