



Image may be representation.
See specifications for product details.



STTH4R02SY

Manufacturer Part Number	STTH4R02SY
Manufacturer	STMicroelectronics
Allelco Part Number	32D-STTH4R02SY
ECAD Model	PCB Symbol, Footprint & 3D Model
Parts Description	DIODE GEN PURP 200V 4A SMC
Package	DO-214AB, SMC
Data sheet	STTH4R02-Y.pdf
RoHs Status	ROHS3 Compliant

Get a Quote

STTH4R02SY - STMicroelectronics.New Original in Stock. Download Linear Technology STTH4R02SY datasheet/specifications on AllelcoElec.com.
Request a quote for STTH4R02SY, please send us email: info@allelco.com

Specifications

STTH4R02SY Tech Specifications
STTH4R02SY - STMicroelectronics technical specifications, attributes, parameters

Product Attribute	Attribute Value	Product Attribute	Attribute Value
Manufacturer	STMicroelectronics	Package / Case	DO-214AB, SMC
Voltage - Forward (Vf) (Max) @ If	1.05 V @ 4 A	Package	Tape & Reel (TR)
Voltage - DC Reverse (Vr) (Max)	200 V	Operating Temperature - Junction	-40°C ~ 175°C
Technology	Standard	Mounting Type	Surface Mount
Supplier Device Package	SMC	Current - Reverse Leakage @ Vr	3 µA @ 200 V
Speed	Fast Recovery =< 500ns, > 200mA (Io)	Current - Average Rectified (Io)	4A
Series	Q Automotive	Capacitance @ Vr, F	-
Reverse Recovery Time (trr)	30 ns	Base Product Number	STTH4

Parts with Similar Specifications

The three parts on the right have similar specifications to STMicroelectronics STTH4R02SY

Product Attribute				
Part Number	STTH4R02SY	STTH504U	STTH4R02B-TR	STTH4R02U
Manufacturer	STMicroelectronics	STMicroelectronics	STMicroelectronics	STMicroelectronics
Reverse Recovery Time (trr)	30 ns	-	30 ns	30 ns
Operating Temperature - Junction	-40°C ~ 175°C	-	175°C (Max)	175°C (Max)
Technology	Standard	-	Standard	Standard
Base Product Number	STTH4	STTH504	STTH4	STTH4R02
Voltage - Forward (Vf) (Max) @ If	1.05 V @ 4 A	-	1.05 V @ 4 A	1.05 V @ 4 A
Capacitance @ Vr, F	-	-	-	-
Series	Q Automotive	*	-	-
Mounting Type	Surface Mount	-	Surface Mount	Surface Mount
Supplier Device Package	SMC	-	DPAK	SMB
Voltage - DC Reverse (Vr) (Max)	200 V	-	200 V	200 V
Package / Case	DO-214AB, SMC	-	TO-252-3, DPak (2 Leads + Tab), SC-63	DO-214AA, SMB
Package	Tape & Reel (TR)	Tape & Reel (TR)	Tape & Reel (TR)	Tape & Reel (TR)
Speed	Fast Recovery =< 500ns, > 200mA (Io)	-	Fast Recovery =< 500ns, > 200mA (Io)	Fast Recovery =< 500ns, > 200mA (Io)
Current - Average Rectified (Io)	4A	-	4A	4A
Current - Reverse Leakage @ Vr	3 µA @ 200 V	-	3 µA @ 200 V	3 µA @ 200 V

STTH4R02SY Datasheet PDF

Download STTH4R02SY pdf datasheets and STMicroelectronics documentation for STTH4R02SY - STMicroelectronics.

Datasheets

[STTH4R02-Y.pdf](#)

PCN Packaging

[Box Label Chg 28/Jul/2016.pdf](#)

PCN Assembly/Origin

[Mult Dev Site Chg 14/Feb/2020.pdf](#)

Customers Also Interested in

Recommended Products



STTH50W03CW

STMicroelectronics
DIODE ARRAY GP 300V 25A TO247



STTH504U

STMicroelectronics
DIODE GEN PURP 400V 5A



STTH4R02B-TR

STMicroelectronics
DIODE GEN PURP 200V 4A DPAK



STTH4R02U

STMicroelectronics
DIODE GEN PURP 200V 4A SMB



STTH506B

STMicroelectronics
DIODE GEN PURP 600V 5A DPAK

STTH506D

STMicroelectronics
DIODE GEN PURP 600V 5A TO220AC



STTH4R02

STMicroelectronics
DIODE GEN PURP 200V 4A DO201AB



STTH512B

STMicroelectronics
DIODE GEN PURP 1.2KV 5A DPAK



STTH4L06RL

STMicroelectronics
DIODE GEN PURP 600V 4A DO201AD



STTH4R02S

STMicroelectronics
DIODE GEN PURP 200V 4A SMC



STTH40P03SFP

STMicroelectronics
DIODE GEN PURP 300V 40A TO220FP

STTH40P03SFP3

STMicroelectronics



STTH506DTI

STMicroelectronics
DIODE GP 600V 5A TO220AC INS



STTH4R02B

STMicroelectronics
DIODE GEN PURP 200V 4A DPAK



STTH40P03S

STMicroelectronics



STTH4R02RL

STMicroelectronics
DIODE GEN PURP 200V 4A DO201AB



STTH4R02UY

STMicroelectronics
DIODE GEN PURP 200V 4A SMB

STTH506B-TR

STMicroelectronics
DIODE GEN PURP 600V 5A DPAK

Shipment

Delivery Time

In-stock items can be shipped within 24 hours. Some parts will be arranged for delivery within 1-2 days from the date all items arrive at our warehouse. And Allelco ships order once a day at about 17:00, except Sunday. Once the goods are shipped, the estimated delivery time depends on the shipping methods and Delivery destination. The table below shows are the logistic time for some common countries.

Delivery Cost

> Use your express account for shipment if you have one.

> Use our account for the shipment. Refer to the table below for the approximate charges.

(Different time frame / countries / package size has different price.)

Delivery Method

> Global Common Shipment by DHL / UPS / FedEx / TNT / EMS / SF we support.

> Others more shipping ways, please get in touch with your customer manager.

Common Countries Logistic Time Reference		
Region	Country	Logistic Time(Day)
America	United States	5
	Brazil	7
Europe	Germany	5
	United Kingdom	4
	Italy	5
Oceania	Australia	6
	New Zealand	7
Asia	India	6
	Japan	7
Middle East	Israel	6

DHL & FedEx Shipment Charges Reference	
Shipment charges(KG)	Reference DHL(USD\$)
0.00kg-1.00kg	USD\$60.00
1.00kg-2.00kg	USD\$70.00
2.00kg-3.00kg	USD\$80.00

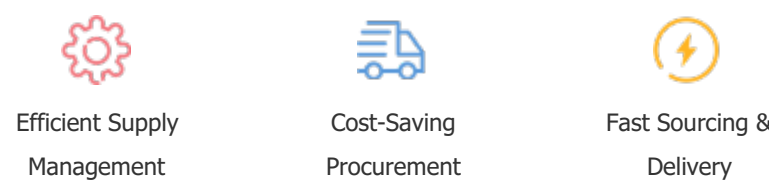
Note: The above table is for reference only. There may have some data bias for the uncontrollable factors.
Contact us if you have any questions.

Payment Support

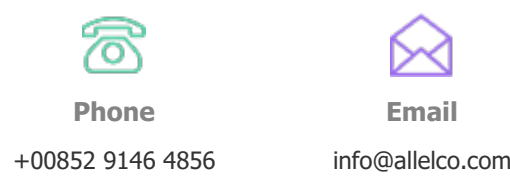
The payment method can be chosen from the methods shown below:
Wire Transfer (T/T, Bank Transfer), Western Union, Credit card, PayPal.



Your Faithful Supply Chain Partner -



Contact us if you have any questions.



Certifications & Memberships



View More



WWW.ALLELCOELEC.COM

Contact us

Address: Flat/Rm C 13/F Harvard Commercial Building 105-111 Thomson Road, Wan Chai, Hong Kong

Phone: +00852 9146 4856

Fax: +00852 3010 8510

Email: info@Allelco.com

Copyright © 2012-2023 AllelcoElec.com. All rights reserved.