

Image may be representation.  
See specifications for product details.



## MAX810TEUR+T

Manufacturer Part Number	<b>MAX810TEUR+T</b>
Manufacturer	<b>Maxim Integrated</b>
Allelco Part Number	32D-MAX810TEUR+T
ECAD Model	Request Free CAD Models
Parts Description	IC SUPERVISOR 1 CHANNEL SOT23-3
Package	TO-236-3, SC-59, SOT-23-3
Data sheet	<b>MAX803,809,810.pdf</b>
RoHs Status	<b>ROHS3 Compliant</b>

**Get a Quote**

MAX810TEUR+T - Analog Devices Inc./Maxim Integrated.New Original in Stock. Download Linear Technology MAX810TEUR+T datasheet/specifications on AllelcoElec.com.  
Request a quote for MAX810TEUR+T, please send us email: [info@allelco.com](mailto:info@allelco.com)

### Specifications

MAX810TEUR+T Tech Specifications  
MAX810TEUR+T - Analog Devices Inc./Maxim Integrated technical specifications, attributes, parameters

Product Attribute	Attribute Value	Product Attribute	Attribute Value
Manufacturer	Maxim Integrated	Package / Case	TO-236-3, SC-59, SOT-23-3
Voltage - Threshold	3.08V	Package	Tape & Reel (TR)
Type	Simple Reset/Power-On Reset	Output	Push-Pull, Totem Pole
Supplier Device Package	SOT-23-3	Operating Temperature	-40°C ~ 105°C (TA)
Series	-	Number of Voltages Monitored	1
Reset Timeout	140ms Minimum	Mounting Type	Surface Mount
Reset	Active High	Base Product Number	MAX810

### Parts with Similar Specifications

The three parts on the right have similar specifications to Analog Devices Inc./Maxim Integrated MAX810TEUR+T

Product Attribute				
Part Number	MAX810TEUR+T	MAX810ZEXR-T	MAX810STRG	MAX810SN293D1T1G
Manufacturer	Analog Devices Inc./Maxim Integrated	Analog Devices Inc./Maxim Integrated	onsemi	onsemi
Type	Simple Reset/Power-On Reset	Simple Reset/Power-On Reset	Simple Reset/Power-On Reset	Simple Reset/Power-On Reset
Operating Temperature	-40°C ~ 105°C (TA)	-40°C ~ 125°C (TA)	-40°C ~ 105°C (TJ)	-40°C ~ 105°C (TJ)
Reset	Active High	Active High	Active High	Active High
Package	Tape & Reel (TR)	Bulk	Tape & Reel (TR)	Tape & Reel (TR)
Reset Timeout	140ms Minimum	140ms Minimum	140ms Minimum	1ms Minimum
Series	-	-	-	-
Supplier Device Package	SOT-23-3	SC-70-3	SOT-23-3 (TO-236)	SOT-23-3 (TO-236)
Output	Push-Pull, Totem Pole	Push-Pull, Totem Pole	Push-Pull, Totem Pole	Push-Pull, Totem Pole
Voltage - Threshold	3.08V	2.32V	2.93V	2.93V
Package / Case	TO-236-3, SC-59, SOT-23-3	SC-70, SOT-323	TO-236-3, SC-59, SOT-23-3	TO-236-3, SC-59, SOT-23-3
Base Product Number	MAX810	MAX810	MAX810	MAX810
Number of Voltages Monitored	1	1	1	1
Mounting Type	Surface Mount	Surface Mount	Surface Mount	Surface Mount

### MAX810TEUR+T Datasheet PDF

Download MAX810TEUR+T pdf datasheets and Analog Devices Inc./Maxim Integrated documentation for MAX810TEUR+T - Analog Devices Inc./Maxim Integrated.

#### Datasheets

[MAX803,809,810.pdf](#)

#### Environmental Information

[Maxim Integrated REACH.pdf](#)

[Maxim Integrated RoHS Cert.pdf](#)

[Red Phosphorous Certificate.pdf](#)

#### Part Numbering Guide

[Part Numbering System.pdf](#)

#### Application Notes

[Voltage Monitoring in Complex Systems.pdf](#)

### Customers Also Interested in

#### Recommended Products

**MAX810ZEXR-T**

Analog Devices Inc./Maxim Integrated  
IC SUPERVISOR 3PIN MPU RESET

**MAX810STRG**

onsemi  
IC SUPERVISOR 1 CHANNEL SOT23-3

**MAX810SN293D1T1G**

onsemi  
IC SUPERVISOR 1 CHANNEL SOT23-3

**MAX810TEXR+T**

Analog Devices Inc./Maxim Integrated  
IC RESET CIRC MPU SC70-3

**MAX810SEUR+T**

Analog Devices Inc./Maxim Integrated  
IC SUPERVISOR 1 CHANNEL SOT23-3

**MAX810TTR**

onsemi  
IC SUPERVISOR 1 CHANNEL SOT23-3

**MAX811LEUS**

Analog Devices Inc./Maxim Integrated  
IC SUPERVISOR 1 CHANNEL SOT23-4

**MAX811MEUS+T**

Analog Devices Inc./Maxim Integrated  
IC SUPERVISOR 1 CHANNEL SOT143-4

**MAX810TTRG**

onsemi  
IC SUPERVISOR 1 CHANNEL SOT23-3

**MAX811LEUS-T**

onsemi  
IC SUPERVISOR 1 CHANNEL SOT23-4

**MAX810SEUR-T**

Analog Devices Inc./Maxim Integrated  
IC SUPERVISOR 3PIN MPU RESET

**MAX811LEUS+T**

Analog Devices Inc./Maxim Integrated  
IC SUPERVISOR 1 CHANNEL SOT143-4

**MAX810SEXR+T**

Analog Devices Inc./Maxim Integrated  
IC RESET CIRC MPU SC70-3

**MAX810STR**

onsemi  
IC SUPERVISOR 1 CHANNEL SOT23-3

**MAX810T**

Analog Devices / Maxim Integrated

**MAX810TEUR-T**

Analog Devices Inc./Maxim Integrated  
IC SUPERVISOR 3PIN MPU RESET

**MAX810SQ293D1T1G**

onsemi  
IC SUPERVISOR 1 CHANNEL SC70-3

**MAX811LEUS-T**

Analog Devices Inc./Maxim Integrated  
IC SUPERVISOR 1 CHANNEL SOT143-4

## Shipment

### Delivery Time

In-stock items can be shipped within 24 hours. Some parts will be arranged for delivery within 1-2 days from the date all items arrive at our warehouse. And Allelco ships order once a day at about 17:00, except Sunday. Once the goods are shipped, the estimated delivery time depends on the shipping methods and Delivery destination. The table below shows are the logistic time for some common countries.

### Delivery Cost

> Use your express account for shipment if you have one.

> Use our account for the shipment. Refer to the table below for the approximate charges.

(Different time frame / countries / package size has different price.)

### Delivery Method

> Global Common Shipment by DHL / UPS / FedEx / TNT / EMS / SF we support.

> Others more shipping ways, please get in touch with your customer manager.

Common Countries Logistic Time Reference		
Region	Country	Logistic Time(Day)
America	United States	5
	Brazil	7
Europe	Germany	5
	United Kingdom	4
	Italy	5
Oceania	Australia	6
	New Zealand	7
Asia	India	6
	Japan	7
Middle East	Israel	6

DHL & FedEx Shipment Charges Reference	
Shipment charges(KG)	Reference DHL(USD\$)
0.00kg-1.00kg	USD\$60.00
1.00kg-2.00kg	USD\$70.00
2.00kg-3.00kg	USD\$80.00

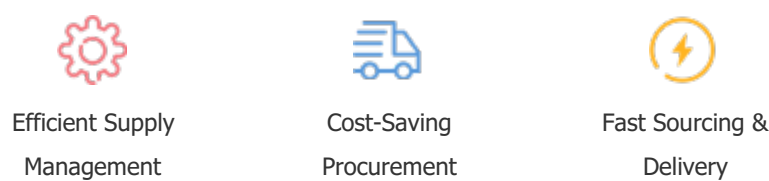
Note: The above table is for reference only. There may have some data bias for the uncontrollable factors.  
Contact us if you have any questions.

## Payment Support

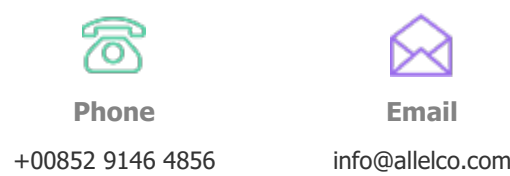
The payment method can be chosen from the methods shown below:  
Wire Transfer (T/T, Bank Transfer), Western Union, Credit card, PayPal.



## Your Faithful Supply Chain Partner -



Contact us if you have any questions.



## Certifications & Memberships



[View More](#)