



Image may be representation.
See specifications for product details.



ADM1232ARMZ

Manufacturer Part Number	ADM1232ARMZ
Manufacturer	Analog Devices, Inc.
Allelco Part Number	32D-ADM1232ARMZ
ECAD Model	PCB Symbol, Footprint & 3D Model
Parts Description	IC SUPERVISOR 1 CHANNEL 8MSOP
Package	8-TSSOP, 8-MSOP (0.118", 3.00mm Width)
Data sheet	Cylindrical Battery Holders.pdf
RoHs Status	ROHS3 Compliant

Get a Quote

ADM1232ARMZ - Analog Devices Inc..New Original in Stock. Download Linear Technology ADM1232ARMZ datasheet/specifications on AllelcoElec.com.
Request a quote for ADM1232ARMZ, please send us email: info@allelco.com

Specifications

ADM1232ARMZ Tech Specifications
ADM1232ARMZ - Analog Devices Inc. technical specifications, attributes, parameters

Product Attribute	Attribute Value	Product Attribute	Attribute Value
Manufacturer	Analog Devices, Inc.	Package / Case	8-TSSOP, 8-MSOP (0.118", 3.00mm Width)
Voltage - Threshold	Adjustable/Selectable	Package	Tube
Type	Simple Reset/Power-On Reset	Output	Open Drain, Push-Pull
Supplier Device Package	8-MSOP	Operating Temperature	-40°C ~ 85°C (TA)
Series	-	Number of Voltages Monitored	1
Reset Timeout	250ms Minimum	Mounting Type	Surface Mount
Reset	Active High/Active Low	Base Product Number	ADM1232

Parts with Similar Specifications

The three parts on the right have similar specifications to Analog Devices Inc. ADM1232ARMZ

Product Attribute				
Part Number	ADM1232ARMZ	ADM1232ARM	ADM1232ARMZ-REEL7	ADM1232ANZ
Manufacturer	Analog Devices Inc.	Analog Devices Inc.	Analog Devices Inc.	Analog Devices Inc.
Operating Temperature	-40°C ~ 85°C (TA)	-40°C ~ 85°C (TA)	-40°C ~ 85°C (TA)	-40°C ~ 85°C (TA)
Reset	Active High/Active Low	Active High/Active Low	Active High/Active Low	Active High/Active Low
Output	Open Drain, Push-Pull	Open Drain, Push-Pull	Open Drain, Push-Pull	Open Drain, Push-Pull
Number of Voltages Monitored	1	1	1	1
Voltage - Threshold	Adjustable/Selectable	Adjustable/Selectable	Adjustable/Selectable	Adjustable/Selectable
Supplier Device Package	8-MSOP	8-MSOP	8-MSOP	8-PDIP
Package / Case	8-TSSOP, 8-MSOP (0.118", 3.00mm Width)	8-TSSOP, 8-MSOP (0.118", 3.00mm Width)	8-TSSOP, 8-MSOP (0.118", 3.00mm Width)	8-DIP (0.300", 7.62mm)
Type	Simple Reset/Power-On Reset	Simple Reset/Power-On Reset	Simple Reset/Power-On Reset	Simple Reset/Power-On Reset
Series	-	-	-	-
Base Product Number	ADM1232	ADM1232	ADM1232	ADM1232
Mounting Type	Surface Mount	Surface Mount	Surface Mount	Through Hole
Reset Timeout	250ms Minimum	250ms Minimum	250ms Minimum	250ms Minimum
Package	Tube	Tube	Tape & Reel (TR)	Tube

ADM1232ARMZ Datasheet PDF

Download ADM1232ARMZ pdf datasheets and Analog Devices Inc. documentation for ADM1232ARMZ - Analog Devices Inc..

Datasheets

[Cylindrical Battery Holders.pdf](#)

PCN Assembly/Origin

[2.73KHz.pdf](#)

Customers Also Interested in

Recommended Products



ADM1200-1ARJZ-RL7
ADI (Analog Devices, Inc.)

ADM1232ARM
Analog Devices Inc.
IC SUPERVISOR 1 CHANNEL 8MSOP

ADM1192-1ARMZ-R7
Analog Devices Inc.
IC PWR MONITOR DGTL ALERT 10MSOP

ADM1232ARMZ-REEL7
Analog Devices Inc.
IC SUPERVISOR 1 CHANNEL 8MSOP

ADM1232ANZ
Analog Devices Inc.
IC SUPERVISOR 1 CHANNEL 8DIP

ADM1232ARNZ
Analog Devices Inc.
IC SUPERVISOR 1 CHANNEL 8SOIC



ADM1232AN

Analog Devices Inc.
IC SUPERVISOR 1 CHANNEL 8DIP



ADM1232ARNZ-REEL7

Analog Devices Inc.
IC SUPERVISOR 1 CHANNEL 8SOIC



ADM1232ARNZ-REEL

Analog Devices Inc.
IC SUPERVISOR 1 CHANNEL 8SOIC



ADM1232AR

ADI (Analog Devices, Inc.)



ADM1232AARNZ

Analog Devices Inc.
IC SUPERVISOR 1 CHANNEL 8SOIC



ADM1232ARWZ-REEL7

Analog Devices Inc.
IC SUPERVISOR 1 CHANNEL 16SOIC



ADM1232AANZ

ADI (Analog Devices, Inc.)



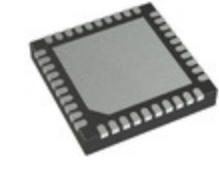
ADM1232AARNZ-REEL

Analog Devices Inc.
IC SUPERVISOR 1 CHANNEL 8SOIC



ADM1232ARN

Analog Devices Inc.
IC SUPERVISOR 1 CHANNEL 8SOIC



ADM1260ACPZ

Analog Devices Inc.
IC SUPERVISOR 10 CHANNEL
40LFCSP



ADM1232ARWZ-REEL

Analog Devices Inc.
IC SUPERVISOR 1 CHANNEL 16SOIC

Shipment

Delivery Time

In-stock items can be shipped within 24 hours. Some parts will be arranged for delivery within 1-2 days from the date all items arrive at our warehouse. And Allelco ships order once a day at about 17:00, except Sunday. Once the goods are shipped, the estimated delivery time depends on the shipping methods and Delivery destination. The table below shows are the logistic time for some common countries.

Delivery Cost

> Use your express account for shipment if you have one.

> Use our account for the shipment. Refer to the table below for the approximate charges.

(Different time frame / countries / package size has different price.)

Delivery Method

> Global Common Shipment by DHL / UPS / FedEx / TNT / EMS / SF we support.

> Others more shipping ways, please get in touch with your customer manager.

Common Countries Logistic Time Reference

Region	Country	Logistic Time(Day)
America	United States	5
	Brazil	7
Europe	Germany	5
	United Kingdom	4
	Italy	5
Oceania	Australia	6
	New Zealand	7
Asia	India	6
	Japan	7
Middle East	Israel	6

DHL & FedEx Shipment Charges Reference

Shipment charges(KG)	Reference DHL(USD\$)
0.00kg-1.00kg	USD\$60.00
1.00kg-2.00kg	USD\$70.00
2.00kg-3.00kg	USD\$80.00

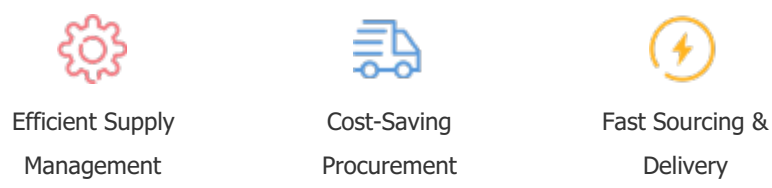
Note: The above table is for reference only. There may have some data bias for the uncontrollable factors.
Contact us if you have any questions.

Payment Support

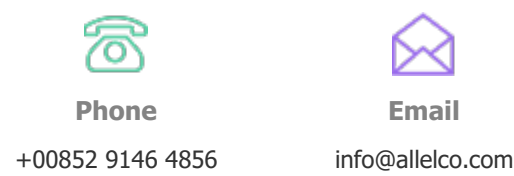
The payment method can be chosen from the methods shown below:
Wire Transfer (T/T, Bank Transfer), Western Union, Credit card,
PayPal.



Your Faithful Supply Chain Partner -



Contact us if you have any questions.



Certifications & Memberships



View More



Contact us

Address: Flat/Rm C 13/F Harvard Commercial Building 105-111 Thomson Road, Wan Chai, Hong Kong

Phone: +00852 9146 4856

Fax: +00852 3010 8510

Email: info@allelco.com

Copyright © 2012-2023 AllelcoElec.com. All rights reserved.