

Image may be representation.  
See specifications for product details.



## MAX5902NNEUT+T

Manufacturer Part Number	<a href="#">MAX5902NNEUT+T</a>
Manufacturer	<a href="#">Maxim Integrated</a>
Allelco Part Number	32D-MAX5902NNEUT+T
ECAD Model	<a href="#">Request Free CAD Models</a>
Parts Description	IC HOT SWAP CTRLR GP SOT23-6
Package	SOT-23-6
Data sheet	<a href="#">MAX5902-03.pdf</a>
RoHs Status	<b>ROHS3 Compliant</b>

**Get a Quote**

MAX5902NNEUT+T - Analog Devices Inc./Maxim Integrated.New Original in Stock. Download Linear Technology MAX5902NNEUT+T datasheet/specifications on AllelcoElec.com.  
Request a quote for MAX5902NNEUT+T, please send us email: [info@allelco.com](mailto:info@allelco.com)

### Specifications

MAX5902NNEUT+T Tech Specifications  
MAX5902NNEUT+T - Analog Devices Inc./Maxim Integrated technical specifications, attributes, parameters

Product Attribute	Attribute Value	Product Attribute	Attribute Value
Manufacturer	Maxim Integrated	Number of Channels	1
Voltage - Supply	9V ~ 72V	Mounting Type	Surface Mount
Type	Hot Swap Controller	Internal Switch(s)	No
Supplier Device Package	SOT-6	Features	Fault Timeout, Latched Fault, Thermal Limit
Series	Simple Swapper™	Current - Supply	1 mA
Programmable Features	UVLO	Current - Output (Max)	-
Package / Case	SOT-23-6	Base Product Number	MAX5902
Package	Tape & Reel (TR)	Applications	Networking
Operating Temperature	-40°C ~ 85°C		

### Parts with Similar Specifications

The three parts on the right have similar specifications to Analog Devices Inc./Maxim Integrated MAX5902NNEUT+T

Product Attribute				
Part Number	MAX5902NNEUT+T	<a href="#">MAX5903ACETT+T</a>	<a href="#">MAX5902ACEUT</a>	<a href="#">MAX5902LAEUT+T</a>
Manufacturer	Analog Devices Inc./Maxim Integrated	Analog Devices Inc./Maxim Integrated	Analog Devices Inc./Maxim Integrated	Analog Devices Inc./Maxim Integrated
Voltage - Supply	9V ~ 72V	9V ~ 72V	9V ~ 72V	9V ~ 72V
Series	Simple Swapper™	Simple Swapper™	Simple Swapper™	Simple Swapper™
Programmable Features	UVLO	UVLO	Auto Retry, Circuit Breaker, Current Limit, Fault Timeout, Slew Rate, Thermal Limit, UVLO	UVLO
Base Product Number	MAX5902	MAX5903	MAX5902	MAX5902
Type	Hot Swap Controller	Hot Swap Controller	Hot Swap Controller	Hot Swap Controller
Supplier Device Package	SOT-6	6-TDFN (3x3)	SOT-23-6	SOT-6
Applications	Networking	General Purpose	Networking	Networking
Features	Fault Timeout, Latched Fault, Thermal Limit	Auto Retry, Fault Timeout, Thermal Limit	Auto Retry, Fault Timeout, Thermal Limit, UVLO	Fault Timeout, Latched Fault, Thermal Limit
Operating Temperature	-40°C ~ 85°C	-40°C ~ 85°C	-40°C ~ 85°C (TA)	-40°C ~ 85°C (TA)
Package	Tape & Reel (TR)	Tape & Reel (TR)	Bulk	Tape & Reel (TR)
Number of Channels	1	1	1	1
Mounting Type	Surface Mount	Surface Mount	Surface Mount	Surface Mount
Package / Case	SOT-23-6	6-WDFN Exposed Pad	SOT-23-6	SOT-23-6
Current - Supply	1 mA	1 mA	1 mA	1 mA
Internal Switch(s)	No	No	No	No
Current - Output (Max)	-	-	-	-

### MAX5902NNEUT+T Datasheet PDF

Download MAX5902NNEUT+T pdf datasheets and Analog Devices Inc./Maxim Integrated documentation for MAX5902NNEUT+T - Analog Devices Inc./Maxim Integrated.

#### Datasheets

[MAX5902-03.pdf](#)

#### Environmental Information

[Maxim Integrated REACH.pdf](#)

[Maxim Integrated RoHS Cert.pdf](#)

[Red Phosphorous Certificate.pdf](#)

#### Part Numbering Guide

[Part Numbering System.pdf](#)

#### Design Resources

[Design Resources](#)

## Application Notes

Advantages of IC-Based Hot-Swap Circuit Protection.pdf

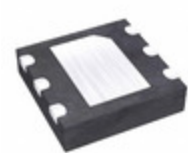
Hot-Swap Controllers Improve Power-Supply Sequenci.pdf

Circuit Removes Relay-Contact Bounce.pdf

Hot-Swap Controller IC Makes Adjustable Circuit Br.pdf

## Customers Also Interested in

### Recommended Products



#### MAX5903ACETT+T

Analog Devices Inc./Maxim Integrated  
IC HOT SWAP CTRLR GP 6TDFN



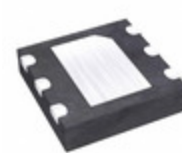
#### MAX5902ACEUT

Analog Devices Inc./Maxim Integrated  
HOT-SWAP CONTROLLER



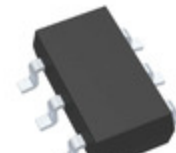
#### MAX5902LAEUT+T

Analog Devices Inc./Maxim Integrated  
IC HOT-SWAP CONTROLLER SOT23-6



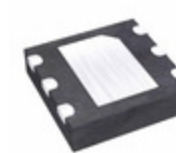
#### MAX5903AAETT+T

Analog Devices Inc./Maxim Integrated  
IC HOT SWAP CTRLR GP 6TDFN



#### MAX5902ACEUT+T

Analog Devices Inc./Maxim Integrated  
IC HOT SWAP CTRLR GP SOT23-6



#### MAX5902LCETT+T

Analog Devices Inc./Maxim Integrated  
IC HOT SWAP CTRLR GP 6TDFN



#### MAX5902LCEUT-T

Analog Devices / Maxim Integrated



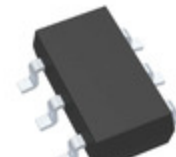
#### MAX5902AAEUT

Analog Devices Inc./Maxim Integrated  
HOT-SWAP CONTROLLER



#### MAX5902ABEUT+T

Analog Devices Inc./Maxim Integrated  
IC HOT SWAP CTRLR GP SOT23-6



#### MAX5902AAEUT+T

Analog Devices Inc./Maxim Integrated  
IC HOT SWAP CTRLR GP SOT23-6



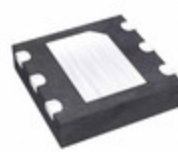
#### MAX5903AAEUT+T

Analog Devices Inc./Maxim Integrated  
IC HOT SWAP CTRLR GP SOT23-6



#### MAX5903LBEUT

Analog Devices Inc./Maxim Integrated  
HOT-SWAP CONTROLLER



#### MAX5903AAEUT-T

Analog Devices / Maxim Integrated



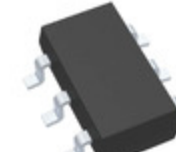
#### MAX5902AAETT+T

Analog Devices Inc./Maxim Integrated  
IC HOT-SWAP CONTROLLER 6-TDFN



#### MAX5903ABEUT+T

Analog Devices Inc./Maxim Integrated  
IC HOT SWAP CTRLR GP SOT23-6



#### MAX5903AAEUT

Analog Devices Inc./Maxim Integrated  
HOT-SWAP CONTROLLER



#### MAX5903ACEUT+T

Analog Devices Inc./Maxim Integrated  
IC HOT SWAP CTRLR GP SOT23-6

## Shipment

### Delivery Time

In-stock items can be shipped within 24 hours. Some parts will be arranged for delivery within 1-2 days from the date all items arrive at our warehouse. And Allelco ships order once a day at about 17:00, except Sunday. Once the goods are shipped, the estimated delivery time depends on the shipping methods and Delivery destination. The table below shows are the logistic time for some common countries.

### Delivery Cost

> Use your express account for shipment if you have one.  
> Use our account for the shipment. Refer to the table below for the approximate charges.  
(Different time frame / countries / package size has different price.)

### Delivery Method

> Global Common Shipment by DHL / UPS / FedEx / TNT / EMS / SF we support.  
> Others more shipping ways, please get in touch with your customer manager.

Common Countries Logistic Time Reference		
Region	Country	Logistic Time(Day)
America	United States	5
	Brazil	7
Europe	Germany	5
	United Kingdom	4
	Italy	5
Oceania	Australia	6
	New Zealand	7
Asia	India	6
	Japan	7
Middle East	Israel	6

DHL & FedEx Shipment Charges Reference	
Shipment charges(KG)	Reference DHL(USD\$)
0.00kg-1.00kg	USD\$60.00
1.00kg-2.00kg	USD\$70.00
2.00kg-3.00kg	USD\$80.00

Note: The above table is for reference only. There may have some data bias for the uncontrollable factors.  
Contact us if you have any questions.

### Payment Support

The payment method can be chosen from the methods shown below:  
Wire Transfer (T/T, Bank Transfer), Western Union, Credit card, PayPal.



### Your Faithful Supply Chain Partner -

Efficient Supply Management  
 Cost-Saving Procurement  
 Fast Sourcing & Delivery

Contact us if you have any questions.

Phone  
+00852 9146 4856  
 Email  
info@allelco.com

### Certifications & Memberships



View More

