

Image may be representation.
See specifications for product details.



ADP124ACPZ-3.0-R7

Manufacturer Part Number	ADP124ACPZ-3.0-R7
Manufacturer	Analog Devices, Inc.
Allelco Part Number	32D-ADP124ACPZ-3.0-R7
ECAD Model	PCB Symbol, Footprint & 3D Model
Parts Description	IC REG LINEAR 3V 500MA 8LFCSP
Package	8-UFDNF Exposed Pad, CSP
Data sheet	Cylindrical Battery Holders.pdf
RoHs Status	ROHS3 Compliant

Get a Quote

ADP124ACPZ-3.0-R7 - Analog Devices Inc..New Original in Stock. Download Linear Technology ADP124ACPZ-3.0-R7 datasheet/specifications on AllelcoElec.com.
Request a quote for ADP124ACPZ-3.0-R7, please send us email: info@allelco.com

Specifications

ADP124ACPZ-3.0-R7 Tech Specifications
ADP124ACPZ-3.0-R7 - Analog Devices Inc. technical specifications, attributes, parameters

Product Attribute	Attribute Value	Product Attribute	Attribute Value
Manufacturer	Analog Devices, Inc.	Output Type	Fixed
Voltage Dropout (Max)	0.23V @ 500mA	Output Configuration	Positive
Voltage - Output (Min/Fixed)	3V	Operating Temperature	-40°C ~ 125°C
Voltage - Output (Max)	-	Number of Regulators	1
Voltage - Input (Max)	5.5V	Mounting Type	Surface Mount
Supplier Device Package	8-LFCSP-UD (2x2)	Current - Supply (Max)	280 µA
Series	-	Current - Quiescent (Iq)	105 µA
Protection Features	Over Current, Over Temperature, Under Voltage Lockout (UVLO)	Current - Output	500mA
Package / Case	8-UFDNF Exposed Pad, CSP	Control Features	Enable
Package	Tape & Reel (TR)	Base Product Number	ADP124
PSRR	60dB (10kHz ~ 100kHz)		

Parts with Similar Specifications

The three parts on the right have similar specifications to Analog Devices Inc. ADP124ACPZ-3.0-R7

Product Attribute				
Part Number	ADP124ACPZ-3.0-R7	ADP125ARHZ	ADP124ACPZ-1.8-R7	ADP122AUJZ-3.0-R7
Manufacturer	Analog Devices Inc.	Analog Devices Inc.	Analog Devices Inc.	Analog Devices Inc.
PSRR	60dB (10kHz ~ 100kHz)	60dB (10kHz ~ 100kHz)	60dB (10kHz ~ 100kHz)	60dB (10kHz ~ 100kHz)
Voltage - Output (Min/Fixed)	3V	0.8V	1.8V	3V
Supplier Device Package	8-LFCSP-UD (2x2)	8-MSOP-EP	8-LFCSP-UD (2x2)	TSOT-23-5
Output Configuration	Positive	Positive	Positive	Positive
Output Type	Fixed	Adjustable	Fixed	Fixed
Current - Output	500mA	500mA	500mA	300mA
Voltage Dropout (Max)	0.23V @ 500mA	0.23V @ 500mA	-	0.15V @ 300mA
Series	-	-	-	-
Package / Case	8-UFDNF Exposed Pad, CSP	8-TSSOP, 8-MSOP (0.118", 3.00mm Width) Exposed Pad	8-UFDNF Exposed Pad, CSP	SOT-23-5 Thin, TSOT-23-5
Current - Quiescent (Iq)	105 µA	105 µA	105 µA	105 µA
Current - Supply (Max)	280 µA	280 µA	280 µA	240 µA
Base Product Number	ADP124	ADP125	ADP124	ADP122
Number of Regulators	1	1	1	1
Voltage - Input (Max)	5.5V	5.5V	5.5V	5.5V
Package	Tape & Reel (TR)	Tube	Tape & Reel (TR)	Tape & Reel (TR)
Control Features	Enable	Enable	Enable	Enable
Voltage - Output (Max)	-	5V	-	-
Protection Features	Over Current, Over Temperature, Under Voltage Lockout (UVLO)	Over Current, Over Temperature, Under Voltage Lockout (UVLO)	Over Current, Over Temperature, Under Voltage Lockout (UVLO)	Over Current, Over Temperature, Under Voltage Lockout (UVLO)
Operating Temperature	-40°C ~ 125°C	-40°C ~ 125°C	-40°C ~ 125°C	-40°C ~ 125°C
Mounting Type	Surface Mount	Surface Mount	Surface Mount	Surface Mount

ADP124ACPZ-3.0-R7 Datasheet PDF

Download ADP124ACPZ-3.0-R7 pdf datasheets and Analog Devices Inc. documentation for ADP124ACPZ-3.0-R7 - Analog Devices Inc..

Datasheets

Cylindrical Battery Holders.pdf

Other Related Documents

Tape and Reel Packaging.pdf

PCN Design/Specification

Cylindrical Battery Holders.pdf

PCN Assembly/Origin

2.73KHz.pdf

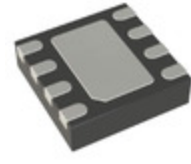
Customers Also Interested in

Recommended Products



ADP125ARHZ

Analog Devices Inc.
IC REG LIN POS ADJ 500MA 8MSOP



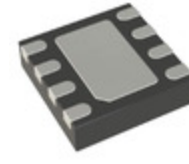
ADP124ACPZ-1.8-R7

Analog Devices Inc.
IC REG LINEAR 1.8V 500MA 8LFCSP



ADP122AUJZ-3.0-R7

Analog Devices Inc.
IC REG LINEAR 3V 300MA TSOT5



ADP125ACPZ-R7

Analog Devices Inc.
IC REG LIN POS ADJ 500MA 8LFCSP



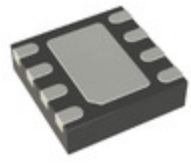
ADP122AUJZ-2.8-R7

Analog Devices Inc.
IC REG LINEAR 2.8V 300MA TSOT5



ADP125ARHZ-R7

Analog Devices Inc.
IC REG LIN POS ADJ 500MA 8MSOP



ADP124ACPZ-3.3-R7

Analog Devices Inc.
IC REG LINEAR 3.3V 500MA 8LFCSP



ADP124ARHZ-3.0-R7

Analog Devices Inc.
IC REG LINEAR 3V 500MA 8MSOP



ADP124ACPZ-3.0

ADI (Analog Devices, Inc.)



ADP122AUJZ-3.3-R7

Analog Devices Inc.
IC REG LINEAR 3.3V 300MA TSOT5



ADP124ARHZ-1.8

ADI (Analog Devices, Inc.)



ADP123AUJZ-R7

Analog Devices Inc.
IC REG LIN POS ADJ 300MA TSOT23



ADP122AUJZ-3.3

ADI (Analog Devices, Inc.)



ADP122AUJZ-3.3-REEL7

ADI (Analog Devices, Inc.)



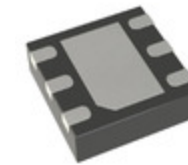
ADP124ARHZ-1.8-R7

Analog Devices Inc.
IC REG LINEAR 1.8V 500MA 8MSOP



ADP124ARHZ-3.3-R7

Analog Devices Inc.
IC REG LINEAR 3.3V 500MA 8MSOP



ADP123ACPZ-R7

Analog Devices Inc.
IC REG LIN POS ADJ 300MA 6LFCSP



ADP1231

Panasonic Electronic Components
SENSOR 7.11PSIG 0.12" 0.1V

Shipment

Delivery Time

In-stock items can be shipped within 24 hours. Some parts will be arranged for delivery within 1-2 days from the date all items arrive at our warehouse. And Allelco ships order once a day at about 17:00, except Sunday. Once the goods are shipped, the estimated delivery time depends on the shipping methods and Delivery destination. The table below shows are the logistic time for some common countries.

Delivery Cost

> Use your express account for shipment if you have one.

> Use our account for the shipment. Refer to the table below for the approximate charges.

(Different time frame / countries / package size has different price.)

Delivery Method

> Global Common Shipment by DHL / UPS / FedEx / TNT / EMS / SF we support.

> Others more shipping ways, please get in touch with your customer manager.

Common Countries Logistic Time Reference

Region	Country	Logistic Time(Day)
America	United States	5
	Brazil	7
Europe	Germany	5
	United Kingdom	4
	Italy	5
Oceania	Australia	6
	New Zealand	7
Asia	India	6
	Japan	7
Middle East	Israel	6

DHL & FedEx Shipment Charges Reference

Shipment charges(KG)	Reference DHL(USD\$)
0.00kg-1.00kg	USD\$60.00
1.00kg-2.00kg	USD\$70.00
2.00kg-3.00kg	USD\$80.00

Note: The above table is for reference only. There may have some data bias for the uncontrollable factors.

Contact us if you have any questions.

Payment Support

The payment method can be chosen from the methods shown below:

Wire Transfer (T/T, Bank Transfer), Western Union, Credit card, PayPal.



Your Faithful Supply Chain Partner -



Efficient Supply Management



Cost-Saving Procurement



Fast Sourcing & Delivery

Contact us if you have any questions.



Phone

+00852 9146 4856



Email

info@allelco.com

Certifications & Memberships



View More

