



Image may be representation.  
See specifications for product details.



## ADCMP553BRMZ

Manufacturer Part Number	<b>ADCMP553BRMZ</b>
Manufacturer	<b>Analog Devices, Inc.</b>
Allelco Part Number	32D-ADCMP553BRMZ
ECAD Model	PCB Symbol, Footprint & 3D Model
Parts Description	IC COMPARATOR 1 W/LATCH 8MSOP
Package	8-TSSOP, 8-MSOP (0.118", 3.00mm Width)
Data sheet	<b>Cylindrical Battery Holders.pdf</b>
RoHs Status	<b>ROHS3 Compliant</b>

**Get a Quote**

ADCMP553BRMZ - Analog Devices Inc..New Original in Stock. Download Linear Technology ADCMP553BRMZ datasheet/specifications on AllelcoElec.com.  
Request a quote for ADCMP553BRMZ, please send us email: [info@allelco.com](mailto:info@allelco.com)

### Specifications

ADCMP553BRMZ Tech Specifications  
ADCMP553BRMZ - Analog Devices Inc. technical specifications, attributes, parameters

Product Attribute	Attribute Value	Product Attribute	Attribute Value
Manufacturer	Analog Devices, Inc.	Operating Temperature	-40°C ~ 85°C
Voltage - Supply, Single/Dual (±)	3.14V ~ 5.25V	Number of Elements	1
Voltage - Input Offset (Max)	10mV @ 3.3V	Mounting Type	Surface Mount
Type	with Latch	Hysteresis	± 0.5mV
Supplier Device Package	8-MSOP	Current - Quiescent (Max)	13mA
Series	-	Current - Output (Typ)	55mA @ 3.3V
Propagation Delay (Max)	0.625ns	Current - Input Bias (Max)	28µA @ 3.3V
Package / Case	8-TSSOP, 8-MSOP (0.118", 3.00mm Width)	CMRR, PSRR (Typ)	76dB CMRR, 70dB PSRR
Package	Tube	Base Product Number	ADCMP553
Output Type	Complementary, Differential, LVPECL, Open-Emitter, PECL		

### Parts with Similar Specifications

The three parts on the right have similar specifications to Analog Devices Inc. ADCMP553BRMZ

Product Attribute				
Part Number	ADCMP553BRMZ	ADCMP562BRQZ	ADCMP563BCPZ-R2	ADCMP552BRQZ
Manufacturer	Analog Devices Inc.	Analog Devices Inc.	Analog Devices Inc.	Analog Devices Inc.
Type	with Latch	with Latch	with Latch	with Latch
Hysteresis	± 0.5mV	±1mV	±1mV	± 0.5mV
Mounting Type	Surface Mount	Surface Mount	Surface Mount	Surface Mount
Package / Case	8-TSSOP, 8-MSOP (0.118", 3.00mm Width)	20-SSOP (0.154", 3.90mm Width)	16-WFQFN Exposed Pad, CSP	20-SSOP (0.154", 3.90mm Width)
Propagation Delay (Max)	0.625ns	0.83ns	-	0.625ns
Current - Input Bias (Max)	28µA @ 3.3V	3µA @ -5.2V,5V	10µA @ 5V	28µA @ 3.3V
Base Product Number	ADCMP553	ADCMP562	ADCMP563	ADCMP552
Supplier Device Package	8-MSOP	20-QSOP	16-LFCSP (3x3)	20-QSOP
Current - Quiescent (Max)	13mA	5mA, 28mA, 13mA	5mA	17mA
Current - Output (Typ)	55mA @ 3.3V	30mA	-	55mA @ 3.3V
Number of Elements	1	2	2	2
Series	-	-	-	-
Operating Temperature	-40°C ~ 85°C	-40°C ~ 85°C	-40°C ~ 85°C	-40°C ~ 85°C
Voltage - Input Offset (Max)	10mV @ 3.3V	2mV @ -5.2V,5V	10mV @ 5V	10mV @ 3.3V
CMRR, PSRR (Typ)	76dB CMRR, 70dB PSRR	80dB CMRR, 85dB PSRR	80dB CMRR, 85dB PSRR	76dB CMRR, 75dB PSRR
Package	Tube	Tube	Tape & Reel (TR)	Tube
Voltage - Supply, Single/Dual (±)	3.14V ~ 5.25V	±4.75V ~ 5.25V	±4.75V ~ 5.25V	3.14V ~ 5.25V
Output Type	Complementary, Differential, LVPECL, Open-Emitter, PECL	Complementary, Differential, Open-Emitter, PECL	Complementary, Differential, ECL, Open-Emitter	Complementary, Differential, LVPECL, Open-Emitter, PECL

### ADCMP553BRMZ Datasheet PDF

Download ADCMP553BRMZ pdf datasheets and Analog Devices Inc. documentation for ADCMP553BRMZ - Analog Devices Inc..

#### Datasheets

[Cylindrical Battery Holders.pdf](#)

#### PCN Assembly/Origin

[2.73KHz.pdf](#)

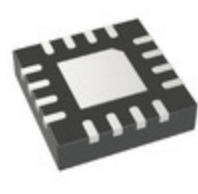
### Customers Also Interested in

## Recommended Products



### ADCMP562BRQZ

Analog Devices Inc.  
IC COMPARATOR 2 W/LATCH  
20QSOP



### ADCMP563BCPZ-R2

Analog Devices Inc.  
IC COMPARATOR 2 W/LATCH  
16LFCSP



### ADCMP552BRQZ

Analog Devices Inc.  
IC COMPARATOR 2 W/LATCH  
20QSOP



### ADCMP393ARZ

Analog Devices Inc.  
IC COMPARATOR 4 GEN PUR 14SOIC



### ADCMP562BRQZ-RL7

Analog Devices Inc.  
IC COMPARATOR 2 GEN PUR  
20QSOP



### ADCMP562BRQ

Analog Devices Inc.  
IC COMPARATOR 2 W/LATCH  
20QSOP



### ADCMP551BRQZ-REEL7

Analog Devices Inc.  
IC COMPARATOR 2 W/LATCH  
16QSOP



### ADCMP551BRQZ

Analog Devices Inc.  
IC COMPARATOR 2 W/LATCH  
16QSOP



### ADCMP561BRQZ

Analog Devices Inc.  
IC COMPARATOR 2 W/LATCH  
16QSOP



### ADCMP564BRQ

Analog Devices Inc.  
IC COMPARATOR 2 W/LATCH  
20QSOP



### ADCMP552BRQ

Analog Devices Inc.  
IC COMPARATOR 2 W/LATCH  
20QSOP



### ADCMP394ARZ

Analog Devices Inc.  
IC COMPARATOR 1 GEN PUR 8SOIC



### ADCMP393ARUZ-RL7

Analog Devices Inc.  
IC COMPARATOR 4 GEN PUR  
14TSSOP



### ADCMP393ARUZ

Analog Devices Inc.  
IC COMPARATOR 4 GEN PUR  
14TSSOP



### ADCMP393ARZ-RL7

Analog Devices Inc.  
IC COMPARATOR 4 GEN PUR 14SOIC



### ADCMP564BRQZ

Analog Devices Inc.  
IC COMPARATOR 2 W/LATCH  
20QSOP



### ADCMP563BRQZ

Analog Devices Inc.  
IC COMPARATOR 2 W/LATCH  
16QSOP



### ADCMP396ARZ

Analog Devices Inc.  
IC COMPARATOR 4 GEN PUR 16SOIC

## Shipment

### Delivery Time

In-stock items can be shipped within 24 hours. Some parts will be arranged for delivery within 1-2 days from the date all items arrive at our warehouse. And Allelco ships order once a day at about 17:00, except Sunday. Once the goods are shipped, the estimated delivery time depends on the shipping methods and Delivery destination. The table below shows are the logistic time for some common countries.

### Delivery Cost

> Use your express account for shipment if you have one.

> Use our account for the shipment. Refer to the table below for the approximate charges.

(Different time frame / countries / package size has different price.)

### Delivery Method

> Global Common Shipment by DHL / UPS / FedEx / TNT / EMS / SF we support.

> Others more shipping ways, please get in touch with your customer manager.

Common Countries Logistic Time Reference		
Region	Country	Logistic Time(Day)
America	United States	5
	Brazil	7
Europe	Germany	5
	United Kingdom	4
	Italy	5
Oceania	Australia	6
	New Zealand	7
Asia	India	6
	Japan	7
Middle East	Israel	6

DHL & FedEx Shipment Charges Reference	
Shipment charges(KG)	Reference DHL(USD\$)
0.00kg-1.00kg	USD\$60.00
1.00kg-2.00kg	USD\$70.00
2.00kg-3.00kg	USD\$80.00

Note: The above table is for reference only. There may have some data bias for the uncontrollable factors.

Contact us if you have any questions.

## Payment Support

The payment method can be chosen from the methods shown below:

Wire Transfer (T/T, Bank Transfer), Western Union, Credit card,  
PayPal.



## Your Faithful Supply Chain Partner -



Efficient Supply  
Management



Cost-Saving  
Procurement



Fast Sourcing &  
Delivery

Contact us if you have any questions.



Phone  
+00852 9146 4856



Email  
info@allelco.com

## Certifications & Memberships



View More



## Contact us

Address: Flat/Rm C 13/F Harvard Commercial Building 105-111 Thomson Road, Wan Chai, Hong Kong

Phone: +00852 9146 4856

Fax: +00852 3010 8510

Email: info@Allelco.com

Copyright © 2012-2023 AllelcoElec.com. All rights reserved.