

Image may be representation.
See specifications for product details.



EP4CE115F23C7N

Manufacturer Part Number **EP4CE115F23C7N**

Manufacturer **Intel**

Allelco Part Number **32D-EP4CE115F23C7N**

ECAD Model PCB Symbol, Footprint & 3D Model

Parts Description **IC FPGA 280 I/O 484FBGA**

Package **484-BGA**

Data sheet [Virtual JTAG Megafuntion Guide.pdf](#)

[Cyclone IV Device Datasheet.pdf](#)

[Cyclone IV Device Handbook.pdf](#)

RoHs Status RoHS Compliant

[Get a Quote](#)

EP4CE115F23C7N - Intel.New Original in Stock. Download Linear Technology EP4CE115F23C7N datasheet/specifications on AllelcoElec.com.
Request a quote for EP4CE115F23C7N, please send us email: info@allelco.com

Specifications

EP4CE115F23C7N Tech Specifications

EP4CE115F23C7N - Intel technical specifications, attributes, parameters

Product Attribute	Attribute Value	Product Attribute	Attribute Value
Manufacturer	Intel	Operating Temperature	0°C ~ 85°C (TJ)
Voltage - Supply	1.15V ~ 1.25V	Number of Logic Elements/Cells	114480
Total RAM Bits	3981312	Number of LABs/CLBs	7155
Supplier Device Package	484-FBGA (23x23)	Number of I/O	280
Series	Cyclone® IV E	Mounting Type	Surface Mount
Package / Case	484-BGA	Base Product Number	EP4CE115
Package	Tray		

Parts with Similar Specifications

The three parts on the right have similar specifications to Intel EP4CE115F23C7N

Product Attribute				
Part Number	EP4CE115F23C7N	EP4CE115F23C8N	EP4CE15E22I7N	EP4CE10E22C8N
Manufacturer	Intel	Intel	Intel	Intel
Mounting Type	Surface Mount	Surface Mount	Surface Mount	Surface Mount
Total RAM Bits	3981312	3981312	516096	423936
Supplier Device Package	484-FBGA (23x23)	484-FBGA (23x23)	144-EQFP (20x20)	144-EQFP (20x20)
Number of LABs/CLBs	7155	7155	963	645
Series	Cyclone® IV E	Cyclone® IV E	Cyclone® IV E	Cyclone® IV E
Base Product Number	EP4CE115	EP4CE115	EP4CE15	EP4CE10
Package	Tray	Tray	Tray	Tray
Package / Case	484-BGA	484-BGA	144-LQFP Exposed Pad	144-LQFP Exposed Pad
Number of Logic Elements/Cells	114480	114480	15408	10320
Operating Temperature	0°C ~ 85°C (TJ)	0°C ~ 85°C (TJ)	-40°C ~ 100°C (TJ)	0°C ~ 85°C (TJ)
Voltage - Supply	1.15V ~ 1.25V	1.15V ~ 1.25V	1.15V ~ 1.25V	1.15V ~ 1.25V
Number of I/O	280	280	81	91

EP4CE115F23C7N Datasheet PDF

Download EP4CE115F23C7N pdf datasheets and Intel documentation for EP4CE115F23C7N - Intel.

Datasheets



[Virtual JTAG Megafuntion Guide.pdf](#)



[Cyclone IV Device Datasheet.pdf](#)



[Cyclone IV Device Handbook.pdf](#)

PCN Packaging



[Mult Dev Label CHG 24/Jan/2020.pdf](#)



[Mult Dev Label Chgs 24/Feb/2020.pdf](#)

PCN Design/Specification



[Quartus SW/Web Chgs 23/Sep/2021.pdf](#)



[Mult Dev Software Chgs 3/Jun/2021.pdf](#)

Errata



[Cyclone IV Device Family Errata.pdf](#)

Customers Also Interested in

Recommended Products



Shipment

Delivery Time

In-stock items can be shipped within 24 hours. Some parts will be arranged for delivery within 1-2 days from the date all items arrive at our warehouse. And Allelco ships order once a day at about 17:00, except Sunday. Once the goods are shipped, the estimated delivery time depends on the shipping methods and Delivery destination. The table below shows are the logistic time for some common countries.

Delivery Cost

> Use your express account for shipment if you have one.

> Use our account for the shipment. Refer to the table below for the approximate charges.

(Different time frame / countries / package size has different price.)

Delivery Method

> Global Common Shipment by DHL / UPS / FedEx / TNT / EMS / SF we support.

> Others more shipping ways, please get in touch with your customer manager.

Common Countries Logistic Time Reference		
Region	Country	Logistic Time(Day)
America	United States	5
	Brazil	7
Europe	Germany	5
	United Kingdom	4
	Italy	5
Oceania	Australia	6
	New Zealand	7
Asia	India	6
	Japan	7
Middle East	Israel	6

DHL & FedEx Shipment Charges Reference	
Shipment charges(KG)	Reference DHL(USD\$)
0.00kg-1.00kg	USD\$60.00
1.00kg-2.00kg	USD\$70.00
2.00kg-3.00kg	USD\$80.00

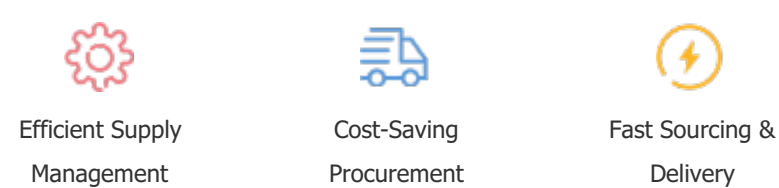
Note: The above table is for reference only. There may have some data bias for the uncontrollable factors.
Contact us if you have any questions.

Payment Support

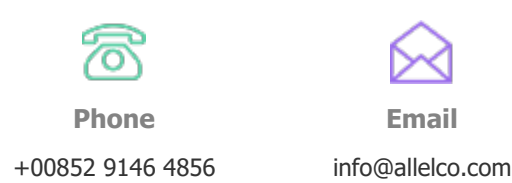
The payment method can be chosen from the methods shown below:
Wire Transfer (T/T, Bank Transfer), Western Union, Credit card, PayPal.



Your Faithful Supply Chain Partner -



Contact us if you have any questions.



Certifications & Memberships



[View More](#)