



MAX4212EUK

Manufacturer Part Number	MAX4212EUK
Manufacturer	Maxim Integrated
Allelco Part Number	32D-MAX4212EUK
ECAD Model	Request Free CAD Models
Parts Description	IC OPAMP VFB 1 CIRCUIT SOT23-5
Package	SC-74A, SOT-753
Data sheet	MAX4212EUK.pdf



Get a Quote

MAX4212EUK - Analog Devices Inc./Maxim Integrated.New Original in Stock. Download Linear Technology MAX4212EUK datasheet/specifications on AllelcoElec.com.
Request a quote for MAX4212EUK, please send us email: info@allelco.com

Specifications

MAX4212EUK Tech Specifications
MAX4212EUK - Analog Devices Inc./Maxim Integrated technical specifications, attributes, parameters

Product Attribute	Attribute Value	Product Attribute	Attribute Value
Manufacturer	Maxim Integrated	Output Type	Rail-to-Rail
Voltage - Supply Span (Min)	3.15 V	Operating Temperature	-40°C ~ 85°C
Voltage - Supply Span (Max)	11 V	Number of Circuits	1
Voltage - Input Offset	4 mV	Mounting Type	Surface Mount
Supplier Device Package	SOT-23-5	Current - Supply	5.5mA
Slew Rate	600V/μs	Current - Output / Channel	120 mA
Series	-	Current - Input Bias	5.4 μA
Package / Case	SC-74A, SOT-753	Amplifier Type	Voltage Feedback
Package	Bulk	-3db Bandwidth	300 MHz

Parts with Similar Specifications

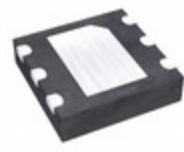
The three parts on the right have similar specifications to Analog Devices Inc./Maxim Integrated MAX4212EUK

Product Attribute				
Part Number	MAX4212EUK	MAX4214EUK+T	MAX4213EUA	MAX4213ESA
Manufacturer	Analog Devices Inc./Maxim Integrated	Analog Devices Inc./Maxim Integrated	Analog Devices Inc./Maxim Integrated	Analog Devices Inc./Maxim Integrated
Current - Supply	5.5mA	5.5mA	5.5mA	5.5mA
Number of Circuits	1	1	1	1
Amplifier Type	Voltage Feedback	Buffer	Voltage Feedback	Voltage Feedback
Slew Rate	600V/μs	600V/μs	600V/μs	600V/μs
Package	Bulk	Tape & Reel (TR)	Tube	Tube
Voltage - Supply Span (Max)	11 V	11 V	11 V	11 V
Operating Temperature	-40°C ~ 85°C	-40°C ~ 85°C	-40°C ~ 85°C	-40°C ~ 85°C
Voltage - Supply Span (Min)	3.15 V	3.15 V	3.15 V	3.15 V
Series	-	-	-	-
Mounting Type	Surface Mount	Surface Mount	Surface Mount	Surface Mount
Output Type	Rail-to-Rail	Rail-to-Rail	Rail-to-Rail	Rail-to-Rail
-3db Bandwidth	300 MHz	230 MHz	300 MHz	300 MHz
Supplier Device Package	SOT-23-5	SOT-23-5	8-uMAX/uSOP	8-SOIC
Current - Input Bias	5.4 μA	5.4 μA	5.4 μA	5.4 μA
Current - Output / Channel	120 mA	120 mA	120 mA	120 mA
Package / Case	SC-74A, SOT-753	SC-74A, SOT-753	8-TSSOP, 8-MSOP (0.118", 3.00mm Width)	8-SOIC (0.154", 3.90mm Width)
Voltage - Input Offset	4 mV	4 mV	4 mV	4 mV

Customers Also Interested in

Recommended Products

MAX4214EUK+T Analog Devices Inc./Maxim Integrated IC BUFFER 1 CIRCUIT SOT23-5	MAX4211DEUE+T Analog Devices Inc./Maxim Integrated IC CURRENT MONITOR 0.5% 16TSSOP	MAX4213EUA Analog Devices Inc./Maxim Integrated IC VOLTAGE FEEDBACK 1 CIRC 8UMAX	MAX4211FETE+T Analog Devices Inc./Maxim Integrated IC CURRENT MONITOR 0.5% 16TQFN	MAX4211FETE+ Analog Devices Inc./Maxim Integrated IC CURRENT MONITOR 0.5% 16TQFN	MAX4213ESA Analog Devices Inc./Maxim Integrated IC VOLTAGE FEEDBACK 1 CIRC 8SOIC
MAX4212EUK+T Analog Devices Inc./Maxim Integrated IC OPAMP VFB 1 CIRCUIT SOT23-5	MAX4212EUK-T Analog Devices Inc./Maxim Integrated VIDEO AMPLIFIER, 1 CHANNEL(S), 1	MAX4213EUA+ Analog Devices Inc./Maxim Integrated IC VOLTAGE FEEDBACK 1 CIRC 8UMAX	MAX4211FETE Analog Devices Inc./Maxim Integrated IC CURRENT MONITOR 0.5% 16TQFN	MAX4213ESA+T Analog Devices Inc./Maxim Integrated IC VOLTAGE FEEDBACK 1 CIRC 8SOIC	MAX4211DEUE+ Analog Devices Inc./Maxim Integrated IC CURRENT MONITOR 0.5% 16TSSOP



MAX4214EUK

Analog Devices Inc./Maxim Integrated
CLOSED-LOOP, R-R BUFFER

MAX4210BETT+T

Analog Devices Inc./Maxim Integrated
IC CURRENT MONITOR 0.5% 6TDFN

MAX4211EEUE+T

Analog Devices Inc./Maxim Integrated
IC CURRENT MONITOR 0.5% 16TSSOP

MAX420CPA

Analog Devices Inc./Maxim Integrated
IC OPAMP ZER-DRIFT 1CIRC 8DIP

MAX4213EUA+T

Analog Devices Inc./Maxim Integrated
IC VOLTAGE FEEDBACK 1 CIRC 8UMAX

MAX4211AEUE+T

Analog Devices Inc./Maxim Integrated
IC CURRENT MONITOR 0.5% 16TSSOP

Shipment

Delivery Time

In-stock items can be shipped within 24 hours. Some parts will be arranged for delivery within 1-2 days from the date all items arrive at our warehouse. And Allelco ships order once a day at about 17:00, except Sunday. Once the goods are shipped, the estimated delivery time depends on the shipping methods and Delivery destination. The table below shows are the logistic time for some common countries.

Delivery Cost

- > Use your express account for shipment if you have one.
 - > Use our account for the shipment. Refer to the table below for the approximate charges.
- (Different time frame / countries / package size has different price.)

Delivery Method

- > Global Common Shipment by DHL / UPS / FedEx / TNT / EMS / SF we support.
- > Others more shipping ways, please get in touch with your customer manager.

Common Countries Logistic Time Reference

Region	Country	Logistic Time(Day)
America	United States	5
	Brazil	7
Europe	Germany	5
	United Kingdom	4
	Italy	5
Oceania	Australia	6
	New Zealand	7
Asia	India	6
	Japan	7
Middle East	Israel	6

DHL & FedEx Shipment Charges Reference

Shipment charges(KG)	Reference DHL(USD\$)
0.00kg-1.00kg	USD\$60.00
1.00kg-2.00kg	USD\$70.00
2.00kg-3.00kg	USD\$80.00

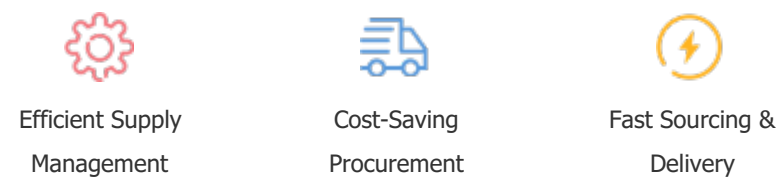
Note: The above table is for reference only. There may have some data bias for the uncontrollable factors. Contact us if you have any questions.

Payment Support

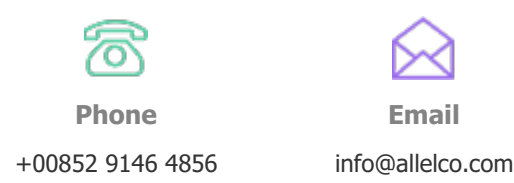
The payment method can be chosen from the methods shown below:
Wire Transfer (T/T, Bank Transfer), Western Union, Credit card, PayPal.



Your Faithful Supply Chain Partner -



Contact us if you have any questions.



Certifications & Memberships



[View More](#)



Contact us

Address: Flat/Rm C 13/F Harvard Commercial Building 105-111 Thomson Road, Wan Chai, Hong Kong
Phone: +00852 9146 4856
Fax: +00852 3010 8510
Email: info@Allelco.com