



Image may be representation.
See specifications for product details.



VY1472M63Y5UQ6UV0

Manufacturer Part Number **VY1472M63Y5UQ6UV0**

Manufacturer **Draloric/Vishay**

Allelco Part Number **32D-VY1472M63Y5UQ6UV0**

ECAD Model PCB Symbol, Footprint & 3D Model

Parts Description **CAP CER 4700PF 760VAC Y5U RADIAL**

Package **Radial, Disc**

Data sheet [Capacitor General Info.pdf](#)

[VY1 Series Datasheet.pdf](#)

[VY1 Series Datasheet.pdf](#)

RoHs Status **ROHS3 Compliant**

[Get a Quote](#)

VY1472M63Y5UQ6UV0 - Vishay Beyschlag/Draloric/BC Components.New Original in Stock. Download Linear Technology VY1472M63Y5UQ6UV0 datasheet/specifications on AllelcoElec.com.

Request a quote for VY1472M63Y5UQ6UV0, please send us email: info@allelco.com

Specifications

VY1472M63Y5UQ6UV0 Tech Specifications

VY1472M63Y5UQ6UV0 - Vishay Beyschlag/Draloric/BC Components technical specifications, attributes, parameters

Product Attribute	Attribute Value	Product Attribute	Attribute Value
Manufacturer	Draloric/Vishay	Operating Temperature	-40°C ~ 125°C
Voltage - Rated	760VAC	Mounting Type	Through Hole
Tolerance	±20%	Lead Style	Formed Leads - Kinked
Thickness (Max)	-	Lead Spacing	0.394" (10.00mm)
Temperature Coefficient	Y5U (E)	Height - Seated (Max)	0.787" (20.00mm)
Size / Dimension	0.630" Dia (16.00mm)	Features	-
Series	VY1	Failure Rate	-
Ratings	X1, Y1	Capacitance	4700 pF
Package / Case	Radial, Disc	Applications	Safety
Package	Cut Tape (CT)		

Parts with Similar Specifications

The three parts on the right have similar specifications to Vishay Beyschlag/Draloric/BC Components VY1472M63Y5UQ6UV0

Product Attribute				
Part Number	VY1472M63Y5UQ6UV0	VY1221K31Y5SQ6TV0	VY1331K31Y5SQ6UV0	VY1151K31Y5SQ6UV0
Manufacturer	Vishay Beyschlag/Draloric/BC Components	Vishay Beyschlag/Draloric/BC Components	Vishay Beyschlag/Draloric/BC Components	Vishay Beyschlag/Draloric/BC Components
Lead Style	Formed Leads - Kinked	Formed Leads - Kinked	Formed Leads - Kinked	Formed Leads - Kinked
Mounting Type	Through Hole	Through Hole	Through Hole	Through Hole
Thickness (Max)	-	-	-	-
Temperature Coefficient	Y5U (E)	Y5S	Y5S	Y5S
Voltage - Rated	760VAC	760VAC	760VAC	760VAC
Applications	Safety	Safety	Safety	Safety
Ratings	X1, Y1	X1, Y1	X1, Y1	X1, Y1
Operating Temperature	-40°C ~ 125°C	-40°C ~ 125°C	-40°C ~ 125°C	-40°C ~ 125°C
Height - Seated (Max)	0.787" (20.00mm)	0.472" (12.00mm)	0.472" (12.00mm)	0.472" (12.00mm)
Capacitance	4700 pF	220 pF	330 pF	150 pF
Failure Rate	-	-	-	-
Package / Case	Radial, Disc	Radial, Disc	Radial, Disc	Radial, Disc
Series	VY1	VY1	VY1	VY1
Features	-	-	-	-
Size / Dimension	0.630" Dia (16.00mm)	0.315" Dia (8.00mm)	0.315" Dia (8.00mm)	0.315" Dia (8.00mm)
Tolerance	±20%	±10%	±10%	±10%
Lead Spacing	0.394" (10.00mm)	0.394" (10.00mm)	0.394" (10.00mm)	0.394" (10.00mm)
Package	Cut Tape (CT)	Tape & Reel (TR)	Cut Tape (CT)	Tape & Box (TB)

VY1472M63Y5UQ6UV0 Datasheet PDF

Download VY1472M63Y5UQ6UV0 pdf datasheets and Vishay Beyschlag/Draloric/BC Components documentation for VY1472M63Y5UQ6UV0 - Vishay Beyschlag/Draloric/BC Components.

Datasheets

[Capacitor General Info.pdf](#)

[VY1 Series Datasheet.pdf](#)

PCN Design/Specification

[Multiple Devices Elimination of Pb 26/Feb/2015.pdf](#)

HTML Datasheet

Customers Also Interested in

Recommended Products



VY1152K41Y5UG6TV0

Electro-Films (EFI) / Vishay

VY1221K31Y5SQ6TV0

Vishay Beyschlag/Draloric/BC Components
CAP CER 220PF 760VAC Y5S RADIAL

VY1331K31Y5SQ6UV0

Vishay Beyschlag/Draloric/BC Components
CAP CER 330PF 760VAC Y5S RADIAL

VY1151K31Y5SQ6UV0

Vishay Beyschlag/Draloric/BC Components
CAP CER 150PF 760VAC Y5S RADIAL

VY1332M59Y5UQ6BV0A

Vishay Beyschlag/Draloric/BC Components
CAP CER 3300PF 760VAC Y5U RADIAL

VY1471M31Y5UG63V0

Vishay Beyschlag/Draloric/BC Components
CAP CER 470PF 760VAC Y5U RADIAL



VY1332M59Y5UQ6TV0

Vishay Beyschlag/Draloric/BC Components
CAP CER 3300PF 760VAC Y5U RADIAL

VY1102M35Y5UG63V0

Vishay Beyschlag/Draloric/BC Components
CAP CER 1000PF 760VAC Y5U RADIAL

VY1152M41Y5UQ83LX

Vishay Beyschlag/Draloric/BC Components
CAP CER 1500PF 760VAC Y5U RADIAL

VY1220K31U2JQ6TV0

Vishay Beyschlag/Draloric/BC Components
CAP CER 22PF 760VAC U2J RADIAL

VY1102M35Y5UQ63V0

Vishay Beyschlag/Draloric/BC Components
CAP CER 1000PF 760VAC Y5U RADIAL

VY1152M41Y5UQ63V0

Vishay Beyschlag/Draloric/BC Components
CAP CER 1500PF 760VAC Y5U RADIAL



VY1102M35Y5UG6UV0

Vishay Beyschlag/Draloric/BC Components
CAP CER 1000PF 760VAC Y5U RADIAL

VY1221K31Y5SQ63V0

Vishay Beyschlag/Draloric/BC Components
CAP CER 220PF 760VAC Y5S RADIAL

VY1470K31Y5SQ6BV0

Vishay Beyschlag/Draloric/BC Components
CAP CER 47PF 760VAC Y5S RADIAL

VY1392M61Y5UQ6TV0

Electro-Films (EFI) / Vishay
CAP CER 3900PF 760VAC Y5U RADIAL

VY1471M31Y5UQ63V0

Vishay Beyschlag/Draloric/BC Components
CAP CER 470PF 760VAC Y5U RADIAL

VY1471M29Y5UC6TV0

Vishay Beyschlag/Draloric/BC Components
CAP CER 470PF 760VAC Y5U RADIAL

Shipment

Delivery Time

In-stock items can be shipped within 24 hours. Some parts will be arranged for delivery within 1-2 days from the date all items arrive at our warehouse. And Allelco ships order once a day at about 17:00, except Sunday. Once the goods are shipped, the estimated delivery time depends on the shipping methods and Delivery destination. The table below shows are the logistic time for some common countries.

Delivery Cost

- > Use your express account for shipment if you have one.
 - > Use our account for the shipment. Refer to the table below for the approximate charges.
- (Different time frame / countries / package size has different price.)

Delivery Method

- > Global Common Shipment by DHL / UPS / FedEx / TNT / EMS / SF we support.
- > Others more shipping ways, please get in touch with your customer manager.

Common Countries Logistic Time Reference		
Region	Country	Logistic Time(Day)
America	United States	5
	Brazil	7
Europe	Germany	5
	United Kingdom	4
	Italy	5
Oceania	Australia	6
	New Zealand	7
Asia	India	6
	Japan	7
Middle East	Israel	6

DHL & FedEx Shipment Charges Reference	
Shipment charges(KG)	Reference DHL(USD\$)
0.00kg-1.00kg	USD\$60.00
1.00kg-2.00kg	USD\$70.00
2.00kg-3.00kg	USD\$80.00

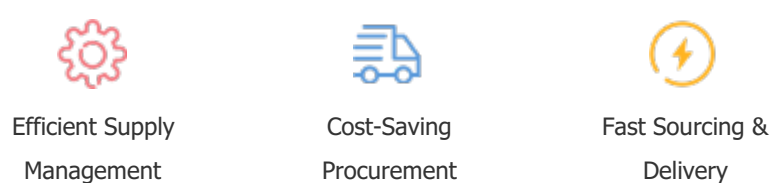
Note: The above table is for reference only. There may have some data bias for the uncontrollable factors. Contact us if you have any questions.

Payment Support

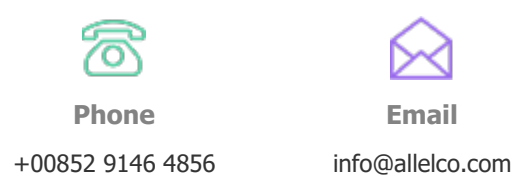
The payment method can be chosen from the methods shown below:
Wire Transfer (T/T, Bank Transfer), Western Union, Credit card, PayPal.



Your Faithful Supply Chain Partner -



Contact us if you have any questions.



Certifications & Memberships



View More