

Image may be representation.
See specifications for product details.



MAX4729ELT+T

Manufacturer Part Number	MAX4729ELT+T
Manufacturer	Maxim Integrated
Allelco Part Number	32D-MAX4729ELT+T
ECAD Model	Request Free CAD Models
Parts Description	IC SWITCH SPDT X 1 5.5OHM 6UDFN
Package	6-WDFDN
Data sheet	MAX4729,30.pdf
RoHs Status	ROHS3 Compliant

Get a Quote

MAX4729ELT+T - Analog Devices Inc./Maxim Integrated.New Original in Stock. Download Linear Technology MAX4729ELT+T datasheet/specifications on AllelcoElec.com. Request a quote for MAX4729ELT+T, please send us email: info@allelco.com

Specifications

MAX4729ELT+T Tech Specifications

MAX4729ELT+T - Analog Devices Inc./Maxim Integrated technical specifications, attributes, parameters

Product Attribute	Attribute Value	Product Attribute	Attribute Value
Manufacturer	Maxim Integrated	Number of Circuits	1
Voltage - Supply, Single (V+)	1.8V ~ 5.5V	Multiplexer/Demultiplexer Circuit	2:1
Voltage - Supply, Dual (V±)	-	Mounting Type	Surface Mount
Switch Time (Ton, Toff) (Max)	45ns, 26ns	Current - Leakage (IS(off)) (Max)	2nA
Switch Circuit	SPDT	Crosstalk	-67dB @ 1MHz
Supplier Device Package	6-uDFN (1.5x1)	Charge Injection	3pC
Series	-	Channel-to-Channel Matching (ΔRon)	50mOhm
Package / Case	6-WDFDN	Channel Capacitance (CS(off), CD(off))	6.5pF
Package	Tape & Reel (TR)	Base Product Number	MAX4729
Operating Temperature	-40°C ~ 85°C (TA)	-3db Bandwidth	300MHz
On-State Resistance (Max)	5.5Ohm		

Parts with Similar Specifications

The three parts on the right have similar specifications to Analog Devices Inc./Maxim Integrated MAX4729ELT+T

Product Attribute				
Part Number	MAX4729ELT+T	MAX4731EBL+T	MAX4730EXT+T	MAX4722EUA+T
Manufacturer	Analog Devices Inc./Maxim Integrated	Analog Devices Inc./Maxim Integrated	Analog Devices Inc./Maxim Integrated	Analog Devices Inc./Maxim Integrated
Multiplexer/Demultiplexer Circuit	2:1	1:1	2:1	1:1
Channel Capacitance (CS(off), CD(off))	6.5pF	20pF, 20pF	6.5pF	9pF
Package / Case	6-WDFDN	9-WFBGA, WLPGA	6-TSSOP, SC-88, SOT-363	8-TSSOP, 8-MSOP (0.118", 3.00mm Width)
Charge Injection	3pC	7.5pC	3pC	5pC
Voltage - Supply, Dual (V±)	-	-	-	-
Operating Temperature	-40°C ~ 85°C (TA)	-40°C ~ 85°C (TA)	-40°C ~ 85°C (TA)	-40°C ~ 85°C (TA)
Switch Circuit	SPDT	SPST - NO	SPDT	SPST - NC
Voltage - Supply, Single (V+)	1.8V ~ 5.5V	2V ~ 11V	1.8V ~ 5.5V	1.8V ~ 5.5V
Mounting Type	Surface Mount	Surface Mount	Surface Mount	Surface Mount
Supplier Device Package	6-uDFN (1.5x1)	9-WLP	SC-70-6	8-uMAX/uSOP
Number of Circuits	1	2	1	2
Package	Tape & Reel (TR)	Tape & Reel (TR)	Tape & Reel (TR)	Tape & Reel (TR)
Current - Leakage (IS(off)) (Max)	2nA	100pA	2nA	500pA
Switch Time (Ton, Toff) (Max)	45ns, 26ns	85ns, 45ns	45ns, 26ns	80ns, 40ns
On-State Resistance (Max)	5.5Ohm	25Ohm	5.5Ohm	4.5Ohm
Series	-	-	-	-
-3db Bandwidth	300MHz	300MHz	300MHz	300MHz
Crosstalk	-67dB @ 1MHz	-108dB @ 1MHz	-67dB @ 1MHz	-110dB @ 1MHz
Channel-to-Channel Matching (ΔRon)	50mOhm	200mOhm	50mOhm	100mOhm
Base Product Number	MAX4729	MAX4731	MAX4730	MAX4722

MAX4729ELT+T Datasheet PDF

Download MAX4729ELT+T pdf datasheets and Analog Devices Inc./Maxim Integrated documentation for MAX4729ELT+T - Analog Devices Inc./Maxim Integrated.

Datasheets

[MAX4729,30.pdf](#)

Environmental Information

[Maxim Integrated REACH.pdf](#)


[Maxim Integrated RoHS Cert.pdf](#)


[Red Phosphorous Certificate.pdf](#)

Part Numbering Guide

 Part Numbering System.pdf

Application Notes

 Reach Farther with Your Proximity Sensor.pdf

 Easy Modifications to Sustain a Design with the DS.pdf

Customers Also Interested in

Recommended Products



MAX4731EBL+T

Analog Devices Inc./Maxim Integrated
IC SWITCH SPST-NO X 2 250HM 9WLP



MAX472CSA

Analog Devices Inc./Maxim Integrated
IC CURRENT SENSE 1 CIRCUIT 8SOIC



MAX4730EXT+T

Analog Devices Inc./Maxim Integrated
IC SWITCH SPDT X 1 5.50HM SC70-6



MAX4729ELT

Analog Devices / Maxim Integrated



MAX472EPA

Analog Devices Inc./Maxim Integrated
IC CURRENT SENSE 1 CIRCUIT 8DIP



MAX4722EUA+T

Analog Devices Inc./Maxim Integrated
IC SWITCH SPST-NCX2 4.50HM 8UMAX



MAX472CSA+T

Analog Devices / Maxim Integrated



MAX4729ELT+

Analog Devices / Maxim Integrated



MAX4723EUA+T

Analog Devices Inc./Maxim Integrated
IC SW SPST-NO/NCX2 4.50HM 8UMAX



MAX4723EUA+

Analog Devices Inc./Maxim Integrated
IC SW SPST-NO/NCX2 4.50HM 8UMAX



MAX4729EXT+T

Analog Devices Inc./Maxim Integrated
IC SWITCH SPDT X 1 5.50HM SC70-6



MAX472ESA

Analog Devices Inc./Maxim Integrated
IC CURRENT SENSE 1 CIRCUIT 8SOIC



MAX4721EUA+

Analog Devices Inc./Maxim Integrated
IC SWITCH SPST-NOX2 4.50HM 8UMAX



MAX4721EBL+T

Analog Devices Inc./Maxim Integrated
IC SWITCH SPST-NOX2 4.50HM 9WLP



MAX4722EUA

Analog Devices Inc./Maxim Integrated
IC SWITCH SPST-NC X 2 30HM 8UMAX



MAX4722EUA+

Analog Devices Inc./Maxim Integrated
IC SWITCH SPST-NOX2 4.50HM 8UMAX



MAX4721EUA+T

Analog Devices Inc./Maxim Integrated
IC SWITCH SPST-NOX2 4.50HM 8UMAX



MAX472CPA

Analog Devices Inc./Maxim Integrated
IC CURRENT SENSE 1 CIRCUIT 8DIP

Shipment

Delivery Time

In-stock items can be shipped within 24 hours. Some parts will be arranged for delivery within 1-2 days from the date all items arrive at our warehouse. And Allelco ships order once a day at about 17:00, except Sunday. Once the goods are shipped, the estimated delivery time depends on the shipping methods and Delivery destination. The table below shows are the logistic time for some common countries.

Delivery Cost

- > Use your express account for shipment if you have one.
 - > Use our account for the shipment. Refer to the table below for the approximate charges.
- (Different time frame / countries / package size has different price.)

Delivery Method

- > Global Common Shipment by DHL / UPS / FedEx / TNT / EMS / SF we support.
- > Others more shipping ways, please get in touch with your customer manager.

Common Countries Logistic Time Reference

Region	Country	Logistic Time(Day)
America	United States	5
	Brazil	7
Europe	Germany	5
	United Kingdom	4
	Italy	5
Oceania	Australia	6
	New Zealand	7
Asia	India	6
	Japan	7
Middle East	Israel	6

DHL & FedEx Shipment Charges Reference

Shipment charges(KG)	Reference DHL(USD\$)
0.00kg-1.00kg	USD\$60.00
1.00kg-2.00kg	USD\$70.00
2.00kg-3.00kg	USD\$80.00

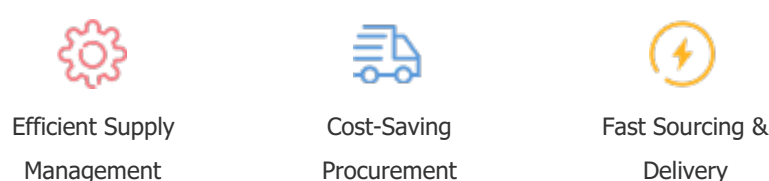
Note: The above table is for reference only. There may have some data bias for the uncontrollable factors. Contact us if you have any questions.

Payment Support

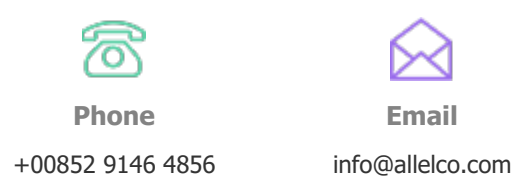
The payment method can be chosen from the methods shown below:
Wire Transfer (T/T, Bank Transfer), Western Union, Credit card, PayPal.



Your Faithful Supply Chain Partner -



Contact us if you have any questions.



Certifications & Memberships



View More

