



Image may be representation.
See specifications for product details.



MAX4392ESA+T

Manufacturer Part Number	MAX4392ESA+T
Manufacturer	Maxim Integrated
Allelco Part Number	32D-MAX4392ESA+T
ECAD Model	Request Free CAD Models
Parts Description	IC AMP VOLTAGE FEEDBACK 8SOIC
Package	8-SOIC (0.154", 3.90mm Width)
Data sheet	MAX4392ESA+T.pdf
RoHs Status	ROHS3 Compliant

Get a Quote

MAX4392ESA+T - Analog Devices Inc./Maxim Integrated.New Original in Stock. Download Linear Technology MAX4392ESA+T datasheet/specifications on AllelcoElec.com. Request a quote for MAX4392ESA+T, please send us email: info@allelco.com

Specifications

MAX4392ESA+T Tech Specifications
MAX4392ESA+T - Analog Devices Inc./Maxim Integrated technical specifications, attributes, parameters

Product Attribute	Attribute Value	Product Attribute	Attribute Value
Manufacturer	Maxim Integrated	Number of Circuits	2
Voltage - Supply, Single/Dual (±)	4.5V ~ 11V, ±2.25V ~ 5.5V	Mounting Type	Surface Mount
Supplier Device Package	8-SOIC	Current - Supply	6 mA
Slew Rate	500V/µs	Current - Output / Channel	95 mA
Series	-	Base Product Number	MAX4392
Package / Case	8-SOIC (0.154", 3.90mm Width)	Applications	Voltage Feedback
Package	Tape & Reel (TR)	-3db Bandwidth	85 MHz
Output Type	Rail-to-Rail		

Parts with Similar Specifications

The three parts on the right have similar specifications to Analog Devices Inc./Maxim Integrated MAX4392ESA+T

Product Attribute				
Part Number	MAX4392ESA+T	MAX4390EUK+T	MAX4394ESD+T	MAX4392EUA+
Manufacturer	Analog Devices Inc./Maxim Integrated	Analog Devices Inc./Maxim Integrated	Analog Devices Inc./Maxim Integrated	Analog Devices Inc./Maxim Integrated
Base Product Number	MAX4392	MAX4390	MAX4394	MAX4392
-3db Bandwidth	85 MHz	85 MHz	85 MHz	85 MHz
Series	-	-	-	-
Applications	Voltage Feedback	Voltage Feedback	Voltage Feedback	Voltage Feedback
Current - Output / Channel	95 mA	95 mA	95 mA	95 mA
Supplier Device Package	8-SOIC	SOT-23-5	14-SOIC	8-uMAX/uSOP
Current - Supply	6 mA	6 mA	6 mA	6 mA
Output Type	Rail-to-Rail	Rail-to-Rail	Rail-to-Rail	Rail-to-Rail
Slew Rate	500V/µs	500V/µs	500V/µs	500V/µs
Package / Case	8-SOIC (0.154", 3.90mm Width)	SC-74A, SOT-753	14-SOIC (0.154", 3.90mm Width)	8-TSSOP, 8-MSOP (0.118", 3.00mm Width)
Package	Tape & Reel (TR)	Tape & Reel (TR)	Tape & Reel (TR)	Tube
Number of Circuits	2	1	3	2
Voltage - Supply, Single/Dual (±)	4.5V ~ 11V, ±2.25V ~ 5.5V	4.5V ~ 11V, ±2.25V ~ 5.5V	4.5V ~ 11V, ±2.25V ~ 5.5V	4.5V ~ 11V, ±2.25V ~ 5.5V
Mounting Type	Surface Mount	Surface Mount	Surface Mount	Surface Mount

MAX4392ESA+T Datasheet PDF

Download MAX4392ESA+T pdf datasheets and Analog Devices Inc./Maxim Integrated documentation for MAX4392ESA+T - Analog Devices Inc./Maxim Integrated.

Environmental Information

Maxim Integrated REACH.pdf

Maxim Integrated RoHS Cert.pdf

Part Numbering Guide

Part Numbering System.pdf

Customers Also Interested in

Recommended Products

MAX4390EUK+T	MAX4394ESD+T	MAX4392ESA	MAX4394EUD+T-ND	MAX4394EUD	MAX4390UK
Analog Devices Inc./Maxim Integrated	Analog Devices Inc./Maxim Integrated	Analog Devices / Maxim Integrated	Analog Devices / Maxim Integrated	Analog Devices Inc./Maxim Integrated	Analog Devices / Maxim Integrated
IC AMP VOLTAGE FEEDBACK SOT23-5	IC AMP VOLTAGE FEEDBACK 14SOIC			IC OPAMP GP 3 CIRCUIT 14TSSOP	

**MAX4392EUA**Analog Devices Inc./Maxim Integrated
IC OPAMP GP 2 CIRCUIT 8UMAX**MAX4394EUD+T**Analog Devices Inc./Maxim Integrated
IC AMP VOLTAGE FEEDBACK 14TSSOP**MAX4394EUD+**Analog Devices Inc./Maxim Integrated
IC AMP VOLTAGE FEEDBACK 14TSSOP**MAX4392ESA+**Analog Devices Inc./Maxim Integrated
IC AMP VOLTAGE FEEDBACK 8SOIC**MAX4391CPA**

Analog Devices / Maxim Integrated

**MAX4393EUB+T**Analog Devices Inc./Maxim Integrated
IC AMP VOLTAGE FEEDBACK 10UMAX**MAX4390EXT+T**Analog Devices Inc./Maxim Integrated
IC AMP VOLTAGE FEEDBACK SC70-6**MAX4391ESA**Analog Devices Inc./Maxim Integrated
IC REG LINEAR SWITCHING REG**MAX4390EUK+TG126**

Analog Devices / Maxim Integrated

MAX4390EUK-TAnalog Devices Inc./Maxim Integrated
IC CURR SENSE 1 CIRCUIT SOT23-5

Shipment

Delivery Time

In-stock items can be shipped within 24 hours. Some parts will be arranged for delivery within 1-2 days from the date all items arrive at our warehouse. And Allelco ships order once a day at about 17:00, except Sunday. Once the goods are shipped, the estimated delivery time depends on the shipping methods and Delivery destination. The table below shows are the logistic time for some common countries.

Delivery Cost

> Use your express account for shipment if you have one.

> Use our account for the shipment. Refer to the table below for the approximate charges.

(Different time frame / countries / package size has different price.)

Delivery Method

> Global Common Shipment by DHL / UPS / FedEx / TNT / EMS / SF we support.

> Others more shipping ways, please get in touch with your customer manager.

Common Countries Logistic Time Reference		
Region	Country	Logistic Time(Day)
America	United States	5
	Brazil	7
Europe	Germany	5
	United Kingdom	4
	Italy	5
Oceania	Australia	6
	New Zealand	7
Asia	India	6
	Japan	7
Middle East	Israel	6

DHL & FedEx Shipment Charges Reference	
Shipment charges(KG)	Reference DHL(USD\$)
0.00kg-1.00kg	USD\$60.00
1.00kg-2.00kg	USD\$70.00
2.00kg-3.00kg	USD\$80.00

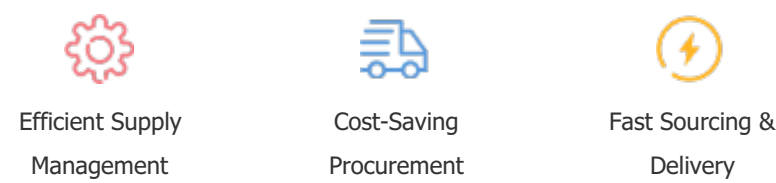
Note: The above table is for reference only. There may have some data bias for the uncontrollable factors.
Contact us if you have any questions.

Payment Support

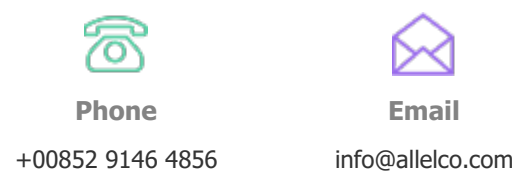
The payment method can be chosen from the methods shown below:
Wire Transfer (T/T, Bank Transfer), Western Union, Credit card, PayPal.



Your Faithful Supply Chain Partner -



Contact us if you have any questions.



Certifications & Memberships



[View More](#)



Contact us

Address: Flat/Rm C 13/F Harvard Commercial Building 105-111 Thomson Road, Wan Chai, Hong Kong

Phone: +00852 9146 4856

Fax: +00852 3010 8510

Email: info@Allelco.com

Copyright © 2012-2023 AllelcoElec.com. All rights reserved.