



# XC2S100-6PQ208C

Manufacturer Part Number	<b>XC2S100-6PQ208C</b>
Manufacturer	<b>AMD Xilinx</b>
Allelco Part Number	32D-XC2S100-6PQ208C
ECAD Model	Request Free CAD Models
Parts Description	IC FPGA 140 I/O 208QFP
Package	208-BFQFP
Data sheet	XC2S100-6PQ208C.pdf



**Get a Quote**

XC2S100-6PQ208C - AMD.New Original in Stock. Download Linear Technology XC2S100-6PQ208C datasheet/specifications on AllelcoElec.com.  
Request a quote for XC2S100-6PQ208C, please send us email: [info@allelco.com](mailto:info@allelco.com)

## Specifications

XC2S100-6PQ208C Tech Specifications  
XC2S100-6PQ208C - AMD technical specifications, attributes, parameters

Product Attribute	Attribute Value	Product Attribute	Attribute Value
Manufacturer	AMD Xilinx	Operating Temperature	0°C ~ 85°C (TJ)
Voltage - Supply	2.375V ~ 2.625V	Number of Logic Elements/Cells	2700
Total RAM Bits	40960	Number of LABs/CLBs	600
Supplier Device Package	208-PQFP (28x28)	Number of I/O	140
Series	Spartan®-II	Number of Gates	100000
Package / Case	208-BFQFP	Mounting Type	Surface Mount
Package	Tray	Base Product Number	XC2S100

## Parts with Similar Specifications

The three parts on the right have similar specifications to AMD XC2S100-6PQ208C

Product Attribute				
Part Number	XC2S100-6PQ208C	<a href="#">XC2S100-5TQ144C</a>	<a href="#">XC2S100-5TQG144I</a>	<a href="#">XC2S100-6FGG256C</a>
Manufacturer	AMD	AMD	AMD	AMD
Package / Case	208-BFQFP	144-LQFP	144-LQFP	256-BGA
Supplier Device Package	208-PQFP (28x28)	144-TQFP (20x20)	144-TQFP (20x20)	256-FBGA (17x17)
Voltage - Supply	2.375V ~ 2.625V	2.375V ~ 2.625V	2.375V ~ 2.625V	2.375V ~ 2.625V
Mounting Type	Surface Mount	Surface Mount	Surface Mount	Surface Mount
Total RAM Bits	40960	40960	40960	40960
Operating Temperature	0°C ~ 85°C (TJ)	0°C ~ 85°C (TJ)	-40°C ~ 100°C (TJ)	0°C ~ 85°C (TJ)
Base Product Number	XC2S100	XC2S100	XC2S100	XC2S100
Number of I/O	140	92	92	176
Series	Spartan®-II	Spartan®-II	Spartan®-II	Spartan®-II
Package	Tray	Tray	Tray	Tray
Number of Logic Elements/Cells	2700	2700	2700	2700
Number of LABs/CLBs	600	600	600	600
Number of Gates	100000	100000	100000	100000

## XC2S100-6PQ208C Datasheet PDF

Download XC2S100-6PQ208C pdf datasheets and AMD documentation for XC2S100-6PQ208C - AMD.

### PCN Assembly/Origin

2.73KHz.pdf

### Environmental Information

Xilinx REACH211 Cert.pdf

### PCN Obsolescence/ EOL

Cylindrical Battery Holders.pdf

## Customers Also Interested in

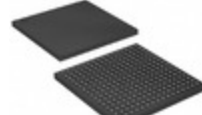
### Recommended Products



**XC2S100-5TQ144C**  
AMD  
IC FPGA 92 I/O 144TQFP



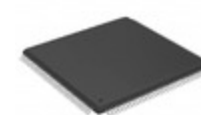
**XC2S100-5TQG144I**  
AMD  
IC FPGA 92 I/O 144TQFP



**XC2S100-6FGG256C**  
AMD  
IC FPGA 176 I/O 256FBGA



**XC2S100E-6FG456I**  
AMD Xilinx



**XC2S100-5TQ144I**  
AMD  
IC FPGA 92 I/O 144TQFP



**XC2S100E-6FGG456C**  
AMD Xilinx

**XC2S100-6PQG208C**AMD  
IC FPGA 140 I/O 208QFP**XC2S100-5TQG144**

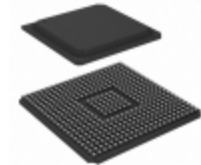
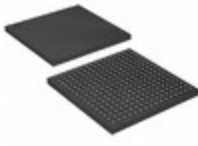
AMD Xilinx

**XC2S100-5TQG144C**AMD  
IC FPGA 92 I/O 144TQFP**XC2S100-6TQ144C**AMD  
IC FPGA 92 I/O 144TQFP**XC2S100-6FT256I**

AMD Xilinx

**XC2S100E-6FG456C**

AMD Xilinx

**XC2S100-6TQG144C**AMD  
IC FPGA 92 I/O 144TQFP**XC2S100E-6FT256C**AMD  
IC FPGA 182 I/O 256FTBGA**XC2S100-6FG256C**AMD  
IC FPGA 176 I/O 256FBGA**XC2S100-6FG456C**AMD  
IC FPGA 196 I/O 456FBGA**XC2S100-PQ208**

AMD Xilinx

**XC2S100E-6FT256I**

AMD Xilinx

## Shipment

### Delivery Time

In-stock items can be shipped within 24 hours. Some parts will be arranged for delivery within 1-2 days from the date all items arrive at our warehouse. And Allelco ships order once a day at about 17:00, except Sunday. Once the goods are shipped, the estimated delivery time depends on the shipping methods and Delivery destination. The table below shows are the logistic time for some common countries.

### Delivery Cost

> Use your express account for shipment if you have one.

> Use our account for the shipment. Refer to the table below for the approximate charges.

(Different time frame / countries / package size has different price.)

### Delivery Method

> Global Common Shipment by DHL / UPS / FedEx / TNT / EMS / SF we support.

> Others more shipping ways, please get in touch with your customer manager.

**Common Countries Logistic Time Reference**

Region	Country	Logistic Time(Day)
America	United States	5
	Brazil	7
Europe	Germany	5
	United Kingdom	4
	Italy	5
Oceania	Australia	6
	New Zealand	7
Asia	India	6
	Japan	7
Middle East	Israel	6

**DHL & FedEx Shipment Charges Reference**

Shipment charges(KG)	Reference DHL(USD\$)
0.00kg-1.00kg	USD\$60.00
1.00kg-2.00kg	USD\$70.00
2.00kg-3.00kg	USD\$80.00

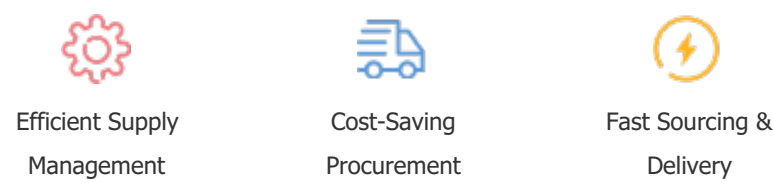
Note: The above table is for reference only. There may have some data bias for the uncontrollable factors.  
Contact us if you have any questions.

### Payment Support

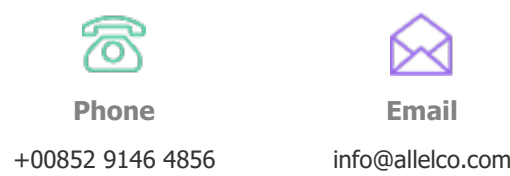
The payment method can be chosen from the methods shown below:  
Wire Transfer (T/T, Bank Transfer), Western Union, Credit card, PayPal.



### Your Faithful Supply Chain Partner -



Contact us if you have any questions.



### Certifications & Memberships



View More



### Contact us

Address: Flat/Rm C 13/F Harvard Commercial Building 105-111 Thomson Road, Wan Chai, Hong Kong

Phone: +00852 9146 4856

Fax: +00852 3010 8510

Email: info@Allelco.com

Copyright © 2012-2023 AllelcoElec.com. All rights reserved.