



5962-9096201MQA

Manufacturer Part Number	5962-9096201MQA
Manufacturer	Analog Devices, Inc.
Allelco Part Number	32D-5962-9096201MQA
ECAD Model	Request Free CAD Models
Parts Description	IC CONV A/D 40SDIP
Package	
Data sheet	Cylindrical Battery Holders.pdf
RoHS Status	ROHS3 Compliant



[Get a Quote](#)

5962-9096201MQA - Analog Devices Inc..New Original in Stock. Download Linear Technology 5962-9096201MQA datasheet/specifications on AllelcoElec.com.
Request a quote for 5962-9096201MQA, please send us email: info@allelco.com

Specifications

5962-9096201MQA Tech Specifications
5962-9096201MQA - Analog Devices Inc. technical specifications, attributes, parameters

Product Attribute	Attribute Value	Product Attribute	Attribute Value
Manufacturer	Analog Devices, Inc.	Package	Tube
Series	*		

Parts with Similar Specifications

The three parts on the right have similar specifications to Analog Devices Inc. 5962-9096201MQA

Product Attribute	NO PICTURE			
Part Number	5962-9096201MQA	5962-9214802QRA	5962-9074401MLA	5962-9076504QFA
Manufacturer	Analog Devices Inc.	Texas Instruments	Texas Instruments	Texas Instruments
Series	*	*	*	*
Package	Tube	Tube	Tube	Tube

5962-9096201MQA Datasheet PDF

Download 5962-9096201MQA pdf datasheets and Analog Devices Inc. documentation for 5962-9096201MQA - Analog Devices Inc..

Datasheets

[Cylindrical Battery Holders.pdf](#)

Customers Also Interested in

Recommended Products

 5962-9214802QRA Texas Instruments OCTAL BUS TRANSCEIVERS WITH 3-ST	 5962-9176402M3A Analog Devices Inc. IC DAC 12BIT QUAD V-OUT 28CLCC	 5962-9086804MPA ADI (Analog Devices, Inc.)	 5962-9204201M2A Analog Devices Inc./Maxim Integrated IC MULTIPLEXER	 5962-9091201MXA QPSM	 5962-9074401MLA Texas Instruments PROTOTYPE
 5962-9086803MPA AD9617 ADI (Analog Devices, Inc.)	 5962-9076603QFA Texas Instruments SN55LBC175 QUADRUPLE LOW-POWER D	 5962-9078501MLA Analog Devices Inc. SEMICONDUCTOR OTHER	 5962-9204102MEA Analog Devices Inc./Maxim Integrated IC SWITCH SPST-NOX4 850HM 16CDIP	 5962-9090801M2A Analog Devices Inc. IC DAC 8BIT LC2MOS 20CLCC	 5962-9151901MPA Analog Devices Inc. IC OPAMP JFET 2 CIRCUIT 8CERDIP
 5962-9080302MLA Cypress Semiconductor	 5962-9076504QFA Texas Instruments QUADRUPLE LOW-POWER DIFFERENTIAL	 5962-9152101MXA Analog Devices Inc. IC DAS 12BIT 116K 28CDIP	 5962-9167703MYA Renesas Electronics America Inc CDIP 37.72X7.62X3.56 MM, 2.54MM	 5962-9081701MPA LT	 5962-9151901M2A Analog Devices Inc. IC OPAMP JFET 2 CIRCUIT 20CLCC

Shipment

Delivery Time

In-stock items can be shipped within 24 hours. Some parts will be arranged for delivery within 1-2 days from the date all items arrive at our warehouse. And Allelco ships order once a day at about 17:00, except Sunday. Once the goods are shipped, the estimated delivery time depends on the shipping methods and Delivery destination. The table below shows are the logistic time for some common countries.

Delivery Cost

- > Use your express account for shipment if you have one.
 - > Use our account for the shipment. Refer to the table below for the approximate charges.
- (Different time frame / countries / package size has different price.)

Delivery Method

- > Global Common Shipment by DHL / UPS / FedEx / TNT / EMS / SF we support.
- > Others more shipping ways, please get in touch with your customer manager.

Common Countries Logistic Time Reference		
Region	Country	Logistic Time(Day)

DHL & FedEx Shipment Charges Reference	
Shipment charges(KG)	Reference DHL(USD\$)

America	United States	5	0.00kg-1.00kg	USD\$60.00
	Brazil	7	1.00kg-2.00kg	USD\$70.00
Europe	Germany	5	2.00kg-3.00kg	USD\$80.00
	United Kingdom	4		
	Italy	5		
Oceania	Australia	6		
	New Zealand	7		
Asia	India	6		
	Japan	7		
Middle East	Israel	6		

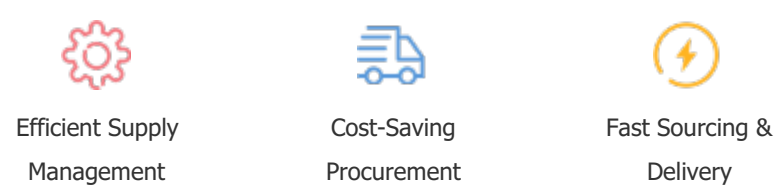
Note: The above table is for reference only. There may have some data bias for the uncontrollable factors.
Contact us if you have any questions.

Payment Support

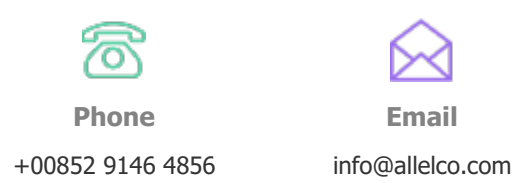
The payment method can be chosen from the methods shown below:
Wire Transfer (T/T, Bank Transfer), Western Union, Credit card, PayPal.



Your Faithful Supply Chain Partner -



Contact us if you have any questions.



Certifications & Memberships



[View More](#)



Contact us

Address: Flat/Rm C 13/F Harvard Commercial Building 105-111 Thomson Road, Wan Chai, Hong Kong
Phone: +00852 9146 4856
Fax: +00852 3010 8510
Email: info@Allelco.com

Copyright © 2012-2023 AllelcoElec.com. All rights reserved.