

Image may be representation.  
See specifications for product details.



## IPS160H

Manufacturer Part Number	<b>IPS160H</b>
Manufacturer	<b>STMicroelectronics</b>
Allelco Part Number	32D-IPS160H
ECAD Model	PCB Symbol, Footprint & 3D Model
Parts Description	IC PWR SWITCH P-CHAN 1:1 PWRSSO12
Package	12-PowerLSOP (0.154", 3.90mm Width)
Data sheet	<b>IPS160H.pdf</b>
RoHs Status	<b>ROHS3 Compliant</b>

**Get a Quote**

IPS160H - STMicroelectronics.New Original in Stock. Download Linear Technology IPS160H datasheet/specifications on AllelcoElec.com.  
Request a quote for IPS160H, please send us email: [info@allelco.com](mailto:info@allelco.com)

### Specifications

IPS160H Tech Specifications  
IPS160H - STMicroelectronics technical specifications, attributes, parameters

Product Attribute	Attribute Value	Product Attribute	Attribute Value
Manufacturer	STMicroelectronics	Output Configuration	High Side
Voltage - Supply (Vcc/Vdd)	Not Required	Operating Temperature	-40°C ~ 125°C (TJ)
Voltage - Load	8V ~ 60V	Number of Outputs	1
Switch Type	General Purpose	Mounting Type	Surface Mount
Supplier Device Package	PowerSSO-12	Interface	On/Off
Series	-	Input Type	Non-Inverting
Rds On (Typ)	60mOhm	Features	-
Ratio - Input:Output	1:1	Fault Protection	Over Temperature, UVLO
Package / Case	12-PowerLSOP (0.154", 3.90mm Width)	Current - Output (Max)	2.5A
Package	Tube	Base Product Number	IPS160
Output Type	P-Channel		

### Parts with Similar Specifications

The three parts on the right have similar specifications to STMicroelectronics IPS160H

Product Attribute				
Part Number	IPS160H	IPS2041LTRPBF	IPS160HTR	IPS2041LTRPBF.
Manufacturer	STMicroelectronics	International Rectifier	STMicroelectronics	IR
Operating Temperature	-40°C ~ 125°C (TJ)	-40°C ~ 150°C (TJ)	-40°C ~ 125°C (TJ)	-
Package	Tube	Bulk	Tape & Reel (TR)	-
Switch Type	General Purpose	General Purpose	General Purpose	-
Current - Output (Max)	2.5A	1.4A	2.5A	-
Output Configuration	High Side	Low Side	High Side	-
Supplier Device Package	PowerSSO-12	SOT-223	PowerSSO-12	-
Input Type	Non-Inverting	Non-Inverting	Non-Inverting	-
Package / Case	12-PowerLSOP (0.154", 3.90mm Width)	TO-261-4, TO-261AA	12-PowerLSOP (0.154", 3.90mm Width)	-
Base Product Number	IPS160	IPS2041	IPS160	-
Output Type	P-Channel	N-Channel	P-Channel	-
Fault Protection	Over Temperature, UVLO	Current Limiting (Fixed), Over Temperature	Over Temperature, UVLO	-
Series	-	-	-	-
Mounting Type	Surface Mount	Surface Mount	Surface Mount	-
Voltage - Supply (Vcc/Vdd)	Not Required	Not Required	Not Required	-
Features	-	-	-	-
Rds On (Typ)	60mOhm	100mOhm	60mOhm	-
Ratio - Input:Output	1:1	1:1	1:1	-
Interface	On/Off	On/Off	On/Off	-
Voltage - Load	8V ~ 60V	35V (Max)	8V ~ 60V	-
Number of Outputs	1	2	1	-

### IPS160H Datasheet PDF

Download IPS160H pdf datasheets and STMicroelectronics documentation for IPS160H - STMicroelectronics.

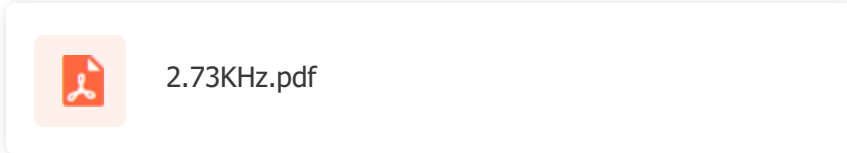
#### Datasheets

[IPS160H.pdf](#)

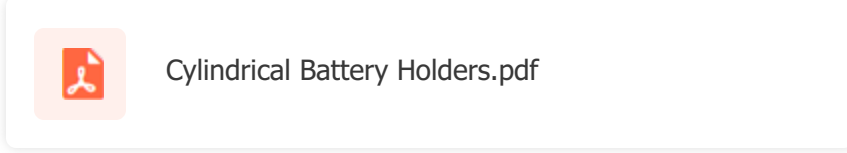
#### PCN Packaging

[2.73KHz.pdf](#)

## PCN Assembly/Origin



## PCN Design/Specification



## Customers Also Interested in

### Recommended Products

<b>IPS2041LTRPBF.</b> IR	<b>IPS181</b> AAI	<b>IPS15C</b> ASIC	<b>IPS15C-SO-G-LF</b> AAI	<b>IPS15HI-SO-G-LF-TR</b> AAIG-LF	<b>IPS2041LPBF</b> IR
<b>IPS13N03LAG</b> Cypress Semiconductor (Infineon Technologies)	<b>IPS2041LTRPBF</b> International Rectifier IPS2041 - AUTOMOTIVE INTELLIGENT	<b>IPS15HC-SO</b> ASIC	<b>IPS15HCSO</b> AAI	<b>IPS15C-SO</b> AAI	<b>IPS160HTR</b> STMicroelectronics IC PWR SWITCH P-CHAN 1:1 PWRSS012
<b>IPS2031R</b> IR	<b>IPS15HI</b> AAI	<b>IPS184</b> Freescale / NXP Semiconductors	<b>IPS15HISO</b> AAI	<b>IPS2041LTR</b> IR	<b>IPS15HC-SO-G-LF</b> AAI

## Shipment

### Delivery Time

In-stock items can be shipped within 24 hours. Some parts will be arranged for delivery within 1-2 days from the date all items arrive at our warehouse. And Allelco ships order once a day at about 17:00, except Sunday. Once the goods are shipped, the estimated delivery time depends on the shipping methods and Delivery destination. The table below shows are the logistic time for some common countries.

### Delivery Cost

- > Use your express account for shipment if you have one.
- > Use our account for the shipment. Refer to the table below for the approximate charges.  
(Different time frame / countries / package size has different price.)

### Delivery Method

- > Global Common Shipment by DHL / UPS / FedEx / TNT / EMS / SF we support.
- > Others more shipping ways, please get in touch with your customer manager.

Common Countries Logistic Time Reference		
Region	Country	Logistic Time(Day)
America	United States	5
	Brazil	7
Europe	Germany	5
	United Kingdom	4
	Italy	5
Oceania	Australia	6
	New Zealand	7
Asia	India	6
	Japan	7
Middle East	Israel	6

DHL & FedEx Shipment Charges Reference	
Shipment charges(KG)	Reference DHL(USD\$)
0.00kg-1.00kg	USD\$60.00
1.00kg-2.00kg	USD\$70.00
2.00kg-3.00kg	USD\$80.00

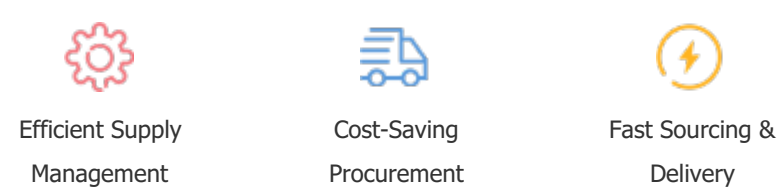
**Note:** The above table is for reference only. There may have some data bias for the uncontrollable factors.  
Contact us if you have any questions.

## Payment Support

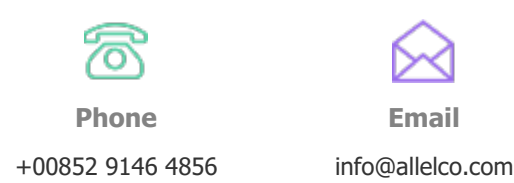
The payment method can be chosen from the methods shown below:  
Wire Transfer (T/T, Bank Transfer), Western Union, Credit card,  
PayPal.



## Your Faithful Supply Chain Partner -



Contact us if you have any questions.



## Certifications & Memberships



View More

