

Image may be representation.
See specifications for product details.



MAX1978ETM+

Manufacturer Part Number	MAX1978ETM+
Manufacturer	Maxim Integrated
Allelco Part Number	32D-MAX1978ETM+
ECAD Model	PCB Symbol, Footprint & 3D Model
Parts Description	IC CNTRLR INT TEMP 48TQFN
Package	48-WFQFN Exposed Pad
Data sheet	Cylindrical Battery Holders.pdf
RoHs Status	ROHS3 Compliant

Get a Quote

MAX1978ETM+ - Analog Devices Inc./Maxim Integrated. New Original in Stock. Download Linear Technology MAX1978ETM+ datasheet/specifications on AllelcoElec.com. Request a quote for MAX1978ETM+, please send us email: info@allelco.com

Specifications

MAX1978ETM+ Tech Specifications
MAX1978ETM+ - Analog Devices Inc./Maxim Integrated technical specifications, attributes, parameters

Product Attribute	Attribute Value	Product Attribute	Attribute Value
Manufacturer	Maxim Integrated	Operating Temperature	-40°C ~ 85°C
Voltage - Supply	3V ~ 5.5V	Mounting Type	Surface Mount
Supplier Device Package	48-TQFN (7x7)	Current - Supply	-
Series	-	Base Product Number	MAX1978
Package / Case	48-WFQFN Exposed Pad	Applications	Peltier Module, Thermoelectric Cooler
Package	Tube		

Parts with Similar Specifications

The three parts on the right have similar specifications to Analog Devices Inc./Maxim Integrated MAX1978ETM+

Product Attribute				
Part Number	MAX1978ETM+	MAX1979ETM+	MAX1978ETM+T	MAX1979ETM+T
Manufacturer	Analog Devices Inc./Maxim Integrated	Analog Devices Inc./Maxim Integrated	Analog Devices Inc./Maxim Integrated	Analog Devices Inc./Maxim Integrated
Base Product Number	MAX1978	MAX1979	MAX1978	MAX1979
Operating Temperature	-40°C ~ 85°C	-40°C ~ 85°C	-40°C ~ 85°C	-40°C ~ 85°C
Series	-	-	-	-
Voltage - Supply	3V ~ 5.5V	3V ~ 5.5V	3V ~ 5.5V	3V ~ 5.5V
Mounting Type	Surface Mount	Surface Mount	Surface Mount	Surface Mount
Package	Tube	Tube	Tape & Reel (TR)	Tape & Reel (TR)
Package / Case	48-WFQFN Exposed Pad	48-WFQFN Exposed Pad	48-WFQFN Exposed Pad	48-WFQFN Exposed Pad
Current - Supply	-	-	-	-
Supplier Device Package	48-TQFN (7x7)	48-TQFN (7x7)	48-TQFN (7x7)	48-TQFN (7x7)
Applications	Peltier Module, Thermoelectric Cooler	Thermoelectric Cooler	Peltier Module, Thermoelectric Cooler	Thermoelectric Cooler

MAX1978ETM+ Datasheet PDF

Download MAX1978ETM+ pdf datasheets and Analog Devices Inc./Maxim Integrated documentation for MAX1978ETM+ - Analog Devices Inc./Maxim Integrated.

Datasheets

Cylindrical Battery Holders.pdf

Environmental Information

Maxim Integrated REACH.pdf

Maxim Integrated RoHS Cert.pdf

Part Numbering Guide

Part Numbering System.pdf

Application Notes

HFAN-08.2.0: How to Control and Compensate a Therm.pdf

HFTA-08.0: Receivers and Transmitters in DWDM Syst.pdf

Customers Also Interested in

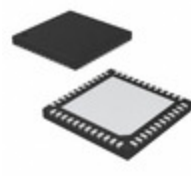
Recommended Products

MAX1979ETM+ Analog Devices Inc./Maxim Integrated IC CNTRLR INT TEMP 48TQFN	MAX19794ETX+T Analog Devices Inc./Maxim Integrated RF ATTENUATOR 0-46.4DB 36WFQFN	MAX1976Ezt180+T Analog Devices Inc./Maxim Integrated IC REG LINEAR 300MA LDO REG	MAX197ACNI+ Analog Devices Inc./Maxim Integrated IC DAS 12BIT 100K 28DIP	MAX197ACAI Analog Devices Inc./Maxim Integrated IC DAS 12BIT 100K 28SSOP	MAX1977EEI+ Analog Devices Inc./Maxim Integrated IC REG CTRLR NOTEBK 4OUT 28QSQP



MAX19777AZA+T

Analog Devices Inc./Maxim Integrated
IC ADC 12BIT SAR 8WLP



MAX1978ETM+T

Analog Devices Inc./Maxim Integrated
IC CNTRLR INT TEMP 48TQFN



MAX197ACNI

Analog Devices Inc./Maxim Integrated
IC DAS 12BIT 100K 28DIP



MAX197ACWI+T

Analog Devices Inc./Maxim Integrated
IC DAS 12BIT 100K 28SOIC



MAX197AEAI

Analog Devices Inc./Maxim Integrated
IC DAS 12BIT 100K 28SSOP



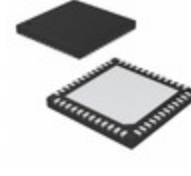
MAX1976Ezt250

Analog Devices / Maxim Integrated



MAX1977EEI+T

Analog Devices Inc./Maxim Integrated
IC REG CTRLR NOTEBK 4OUT 28QSO



MAX1979ETM+T

Analog Devices Inc./Maxim Integrated
IC CNTRLR INT TEMP 48TQFN



MAX19790ETX+T

Analog Devices Inc./Maxim Integrated
RF ATTENUATOR 22DB-44DB 36QFN



MAX1978ETM

Analog Devices Inc./Maxim Integrated
INTEGRATED TEMP CONTROLLER

Shipment

Delivery Time

In-stock items can be shipped within 24 hours. Some parts will be arranged for delivery within 1-2 days from the date all items arrive at our warehouse. And Allelco ships order once a day at about 17:00, except Sunday. Once the goods are shipped, the estimated delivery time depends on the shipping methods and Delivery destination. The table below shows are the logistic time for some common countries.

Delivery Cost

> Use your express account for shipment if you have one.

> Use our account for the shipment. Refer to the table below for the approximate charges.

(Different time frame / countries / package size has different price.)

Delivery Method

> Global Common Shipment by DHL / UPS / FedEx / TNT / EMS / SF we support.

> Others more shipping ways, please get in touch with your customer manager.

Common Countries Logistic Time Reference		
Region	Country	Logistic Time(Day)
America	United States	5
	Brazil	7
Europe	Germany	5
	United Kingdom	4
	Italy	5
Oceania	Australia	6
	New Zealand	7
Asia	India	6
	Japan	7
Middle East	Israel	6

DHL & FedEx Shipment Charges Reference	
Shipment charges(KG)	Reference DHL(USD\$)
0.00kg-1.00kg	USD\$60.00
1.00kg-2.00kg	USD\$70.00
2.00kg-3.00kg	USD\$80.00

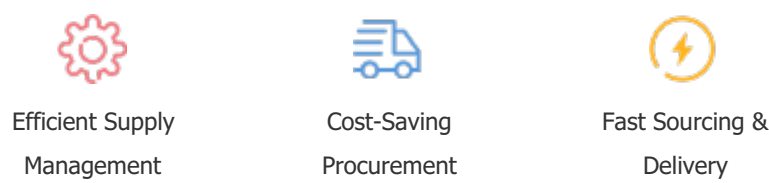
Note: The above table is for reference only. There may have some data bias for the uncontrollable factors.
Contact us if you have any questions.

Payment Support

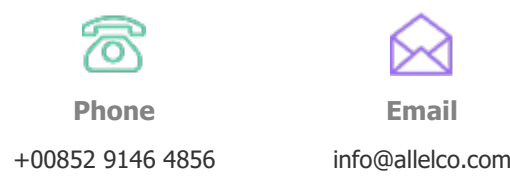
The payment method can be chosen from the methods shown below:
Wire Transfer (T/T, Bank Transfer), Western Union, Credit card, PayPal.



Your Faithful Supply Chain Partner -



Contact us if you have any questions.



Certifications & Memberships



View More



Contact us

Address: Flat/Rm C 13/F Harvard Commercial Building 105-111 Thomson Road, Wan Chai, Hong Kong

Phone: +00852 9146 4856

Fax: +00852 3010 8510

Email: info@Allelco.com

Copyright © 2012-2023 AllelcoElec.com. All rights reserved.