

Image may be representation.
See specifications for product details.



EP20K160EFI484-2X

Manufacturer Part Number **EP20K160EFI484-2X**

Manufacturer **Intel**

Allelco Part Number **32D-EP20K160EFI484-2X**

ECAD Model [Request Free CAD Models](#)

Parts Description **IC FPGA 316 I/O 484FBGA**

Package **484-BBGA**

Data sheet **[APEX 20K Family Datasheet.pdf](#)**

[Virtual JTAG Megafuntion Guide.pdf](#)

Get a Quote

EP20K160EFI484-2X - Intel.New Original in Stock. Download Linear Technology EP20K160EFI484-2X datasheet/specifications on AllelcoElec.com.
Request a quote for EP20K160EFI484-2X, please send us email: info@allelco.com

Specifications

EP20K160EFI484-2X Tech Specifications

EP20K160EFI484-2X - Intel technical specifications, attributes, parameters

Product Attribute	Attribute Value	Product Attribute	Attribute Value
Manufacturer	Intel	Operating Temperature	-40°C ~ 100°C (TJ)
Voltage - Supply	1.71V ~ 1.89V	Number of Logic Elements/Cells	6400
Total RAM Bits	81920	Number of LABs/CLBs	640
Supplier Device Package	484-FBGA (23x23)	Number of I/O	316
Series	APEX-20KE®	Number of Gates	404000
Package / Case	484-BBGA	Mounting Type	Surface Mount
Package	Tray	Base Product Number	EP20K160

Parts with Similar Specifications

The three parts on the right have similar specifications to Intel EP20K160EFI484-2X

Product Attribute				
Part Number	EP20K160EFI484-2X	EP20K160EQC208-1	EP20K160EFC484-2N	EP20K160EFC484-3
Manufacturer	Intel	Intel	Intel	Intel
Package	Tray	Tray	Tray	Tray
Package / Case	484-BBGA	208-BFQFP	484-BBGA	484-BBGA
Number of Logic Elements/Cells	6400	6400	6400	6400
Mounting Type	Surface Mount	Surface Mount	Surface Mount	Surface Mount
Series	APEX-20KE®	APEX-20KE®	APEX-20KE®	APEX-20KE®
Supplier Device Package	484-FBGA (23x23)	208-PQFP (28x28)	484-FBGA (23x23)	484-FBGA (23x23)
Base Product Number	EP20K160	EP20K160	EP20K160	EP20K160
Number of LABs/CLBs	640	640	640	640
Voltage - Supply	1.71V ~ 1.89V	1.71V ~ 1.89V	1.71V ~ 1.89V	1.71V ~ 1.89V
Number of Gates	404000	404000	404000	404000
Total RAM Bits	81920	81920	81920	81920
Number of I/O	316	143	316	316
Operating Temperature	-40°C ~ 100°C (TJ)	0°C ~ 85°C (TJ)	0°C ~ 85°C (TJ)	0°C ~ 85°C (TJ)

EP20K160EFI484-2X Datasheet PDF

Download EP20K160EFI484-2X pdf datasheets and Intel documentation for EP20K160EFI484-2X - Intel.

Datasheets

[APEX 20K Family Datasheet.pdf](#)

[Virtual JTAG Megafuntion Guide.pdf](#)

PCN Packaging

[All Dev Pkg Chg 1/Aug/2018.pdf](#)

[Mult Dev Dessicant Chg 19/Jul/2019.pdf](#)

PCN Obsolescence/ EOL

[EOL 01/Dec/2016.pdf](#)

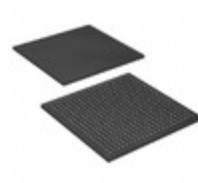
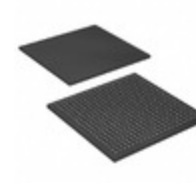
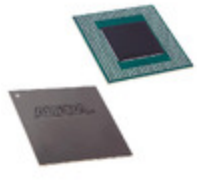
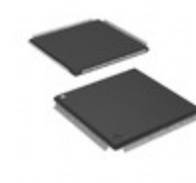
[EOL 21/Nov/2016.pdf](#)

PCN Design/Specification

[Mult Series Software Chgs 26/Mar/2020.pdf](#)

Customers Also Interested in

Recommended Products

					
EP20K160EQC208-1	EP20K160EFC484-2N	EP20K160EFC484-3	EP20K160EFC484-3N	EP20K160EFC484-2X	EP20K160EQC240-3
Intel IC FPGA 143 I/O 208QFP	Intel IC FPGA 316 I/O 484FBGA	Intel IC FPGA 316 I/O 484FBGA	Intel IC FPGA 316 I/O 484FBGA	Altera IC FPGA 316 I/O 484FBGA	Intel IC FPGA 175 I/O 240QFP
					
EP20K160EBC356-3	EP20K160ETC144-2X	EP20K160EQC240-1	EP20K160EFC484-2	EP20K160ETC144-1	EP20K160EFC484-1X
Intel IC FPGA 271 I/O 356BGA	Altera IC FPGA 88 I/O 144TQFP	Intel IC FPGA 175 I/O 240QFP	Intel IC FPGA 316 I/O 484FBGA	Intel IC FPGA 88 I/O 144TQFP	Intel IC FPGA 316 I/O 484FBGA
					
EP20K160EFC484-2X	EP20K160EQC240-1X	EP20K160ETC144-2X	EP20K160EQC208-3N	EP20K160EQC240-2	EP20K160EQC240-3N
Intel IC FPGA 316 I/O 484FBGA	Intel IC FPGA 175 I/O 240QFP	Intel IC FPGA 88 I/O 144TQFP	Intel IC FPGA 143 I/O 208QFP	Intel IC FPGA 175 I/O 240QFP	Intel IC FPGA 175 I/O 240QFP

Shipment

Delivery Time

In-stock items can be shipped within 24 hours. Some parts will be arranged for delivery within 1-2 days from the date all items arrive at our warehouse. And Allelco ships order once a day at about 17:00, except Sunday. Once the goods are shipped, the estimated delivery time depends on the shipping methods and Delivery destination. The table below shows are the logistic time for some common countries.

Delivery Cost

> Use your express account for shipment if you have one.

> Use our account for the shipment. Refer to the table below for the approximate charges.

(Different time frame / countries / package size has different price.)

Delivery Method

> Global Common Shipment by DHL / UPS / FedEx / TNT / EMS / SF we support.

> Others more shipping ways, please get in touch with your customer manager.

Common Countries Logistic Time Reference		
Region	Country	Logistic Time(Day)
America	United States	5
	Brazil	7
Europe	Germany	5
	United Kingdom	4
	Italy	5
Oceania	Australia	6
	New Zealand	7
Asia	India	6
	Japan	7
Middle East	Israel	6

DHL & FedEx Shipment Charges Reference	
Shipment charges(KG)	Reference DHL(USD\$)
0.00kg-1.00kg	USD\$60.00
1.00kg-2.00kg	USD\$70.00
2.00kg-3.00kg	USD\$80.00

Note: The above table is for reference only. There may have some data bias for the uncontrollable factors.

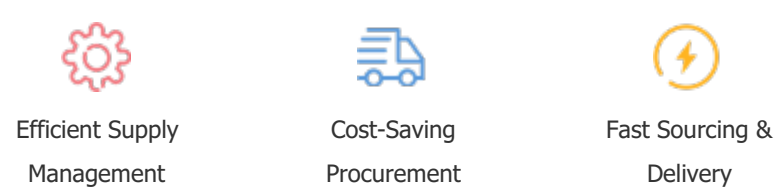
Contact us if you have any questions.

Payment Support

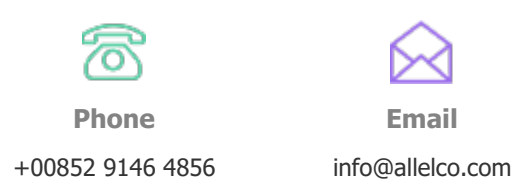
The payment method can be chosen from the methods shown below:
Wire Transfer (T/T, Bank Transfer), Western Union, Credit card,
PayPal.



Your Faithful Supply Chain Partner -



Contact us if you have any questions.



Certifications & Memberships



[View More](#)