

Image may be representation.  
See specifications for product details.



## XC7VX690T-2FFG1930I

Manufacturer Part Number	<b>XC7VX690T-2FFG1930I</b>
Manufacturer	<b>AMD Xilinx</b>
Allelco Part Number	32D-XC7VX690T-2FFG1930I
ECAD Model	Request Free CAD Models
Parts Description	IC FPGA 1000 I/O 1930FCBGA
Package	1924-BBGA, FCBGA
Data sheet	<b>Virtex-7 FPGAs Brief.pdf</b>
RoHs Status	<b>ROHS3 Compliant</b>

**Get a Quote**

XC7VX690T-2FFG1930I - AMD.New Original in Stock. Download Linear Technology XC7VX690T-2FFG1930I datasheet/specifications on AllelcoElec.com.  
Request a quote for XC7VX690T-2FFG1930I, please send us email: [info@allelco.com](mailto:info@allelco.com)

### Specifications

XC7VX690T-2FFG1930I Tech Specifications  
XC7VX690T-2FFG1930I - AMD technical specifications, attributes, parameters

Product Attribute	Attribute Value	Product Attribute	Attribute Value
Manufacturer	AMD Xilinx	Operating Temperature	-40°C ~ 100°C (TJ)
Voltage - Supply	0.97V ~ 1.03V	Number of Logic Elements/Cells	693120
Total RAM Bits	54190080	Number of LABs/CLBs	54150
Supplier Device Package	1930-FCBGA (45x45)	Number of I/O	1000
Series	Virtex®-7 XT	Mounting Type	Surface Mount
Package / Case	1924-BBGA, FCBGA	Base Product Number	XC7VX690
Package	Tray		

### Parts with Similar Specifications

The three parts on the right have similar specifications to AMD XC7VX690T-2FFG1930I

Product Attribute				
Part Number	XC7VX690T-2FFG1930I	<b>XC7VX690T-3FFG1158E</b>	<b>XC7VX690T-2FFG1158C</b>	<b>XC7VX690T-2FFG1158I</b>
Manufacturer	AMD	AMD	AMD	AMD
Voltage - Supply	0.97V ~ 1.03V	0.97V ~ 1.03V	0.97V ~ 1.03V	0.97V ~ 1.03V
Package	Tray	Tray	Tray	Tray
Number of I/O	1000	350	350	350
Base Product Number	XC7VX690	XC7VX690	XC7VX690	XC7VX690
Package / Case	1924-BBGA, FCBGA	1156-BBGA, FCBGA	1156-BBGA, FCBGA	1156-BBGA, FCBGA
Operating Temperature	-40°C ~ 100°C (TJ)	0°C ~ 100°C (TJ)	0°C ~ 85°C (TJ)	-40°C ~ 100°C (TJ)
Number of LABs/CLBs	54150	54150	54150	54150
Number of Logic Elements/Cells	693120	693120	693120	693120
Supplier Device Package	1930-FCBGA (45x45)	1158-FCBGA (35x35)	1158-FCBGA (35x35)	1158-FCBGA (35x35)
Total RAM Bits	54190080	54190080	54190080	54190080
Mounting Type	Surface Mount	Surface Mount	Surface Mount	Surface Mount
Series	Virtex®-7 XT	Virtex®-7 XT	Virtex®-7 XT	Virtex®-7 XT

### XC7VX690T-2FFG1930I Datasheet PDF

Download XC7VX690T-2FFG1930I pdf datasheets and AMD documentation for XC7VX690T-2FFG1930I - AMD.

#### Datasheets

[Virtex-7 FPGAs Brief.pdf](#)

#### Environmental Information

[Xilinx REACH211 Cert.pdf](#)

#### PCN Design/Specification

[Cylindrical Battery Holders.pdf](#)

### Customers Also Interested in

#### Recommended Products

<b>XC7VX690T-3FFG1158E</b>	<b>XC7VX690T-2FFG1158C</b>	<b>XC7VX690T-2FFG1158I</b>	<b>XC7VX690T-2FFG1926I</b>	<b>XC7VX690T-2FFG1927C</b>	<b>XC7VX690T-3FFG1157E</b>
AMD	AMD	AMD	AMD	AMD	AMD
IC FPGA 350 I/O 1158FCBGA	IC FPGA 350 I/O 1158FCBGA	IC FPGA 350 I/O 1158FCBGA	IC FPGA 720 I/O 1926FCBGA	IC FPGA 600 I/O 1927FCBGA	IC FPGA 600 I/O 1157FCBGA



## Shipment

### Delivery Time

In-stock items can be shipped within 24 hours. Some parts will be arranged for delivery within 1-2 days from the date all items arrive at our warehouse. And Allelco ships order once a day at about 17:00, except Sunday. Once the goods are shipped, the estimated delivery time depends on the shipping methods and Delivery destination. The table below shows are the logistic time for some common countries.

### Delivery Cost

> Use your express account for shipment if you have one.

> Use our account for the shipment. Refer to the table below for the approximate charges.

(Different time frame / countries / package size has different price.)

### Delivery Method

> Global Common Shipment by DHL / UPS / FedEx / TNT / EMS / SF we support.

> Others more shipping ways, please get in touch with your customer manager.

Common Countries Logistic Time Reference		
Region	Country	Logistic Time(Day)
America	United States	5
	Brazil	7
Europe	Germany	5
	United Kingdom	4
	Italy	5
Oceania	Australia	6
	New Zealand	7
Asia	India	6
	Japan	7
Middle East	Israel	6

DHL & FedEx Shipment Charges Reference	
Shipment charges(KG)	Reference DHL(USD\$)
0.00kg-1.00kg	USD\$60.00
1.00kg-2.00kg	USD\$70.00
2.00kg-3.00kg	USD\$80.00

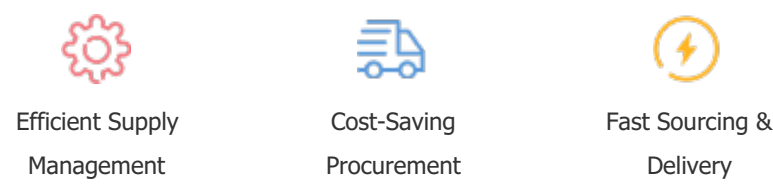
Note: The above table is for reference only. There may have some data bias for the uncontrollable factors.  
Contact us if you have any questions.

### Payment Support

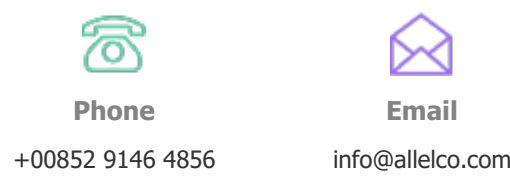
The payment method can be chosen from the methods shown below:  
Wire Transfer (T/T, Bank Transfer), Western Union, Credit card, PayPal.



### Your Faithful Supply Chain Partner -



Contact us if you have any questions.



### Certifications & Memberships



[View More](#)