

Image may be representation.
See specifications for product details.



NJVMJD122T4G

Manufacturer Part Number	NJVMJD122T4G
Manufacturer	onsemi
Allelco Part Number	32D-NJVMJD122T4G
ECAD Model	PCB Footprint and Symbol
Parts Description	TRANS NPN DARL 100V 8A DPAK
Package	TO-252-3, DPak (2 Leads + Tab), SC-63
Data sheet	MJD122_127, NJVMJD122_127.pdf
RoHs Status	ROHS3 Compliant

Get a Quote

NJVMJD122T4G - onsemi.New Original in Stock. Download Linear Technology NJVMJD122T4G datasheet/specifications on AllelcoElec.com.
Request a quote for NJVMJD122T4G, please send us email: info@allelco.com

Specifications

NJVMJD122T4G Tech Specifications

NJVMJD122T4G - onsemi technical specifications, attributes, parameters

Product Attribute	Attribute Value	Product Attribute	Attribute Value
Manufacturer	onsemi	Package	Tape & Reel (TR)
Voltage - Collector Emitter Breakdown (Max)	100 V	Operating Temperature	-65°C ~ 150°C (TJ)
Vce Saturation (Max) @ Ib, Ic	4V @ 80mA, 8A	Mounting Type	Surface Mount
Transistor Type	NPN - Darlington	Frequency - Transition	4MHz
Supplier Device Package	DPAK	DC Current Gain (hFE) (Min) @ Ic, Vce	1000 @ 4A, 4V
Series	Automotive, AEC-Q101	Current - Collector Cutoff (Max)	10µA
Power - Max	1.75 W	Current - Collector (Ic) (Max)	8 A
Package / Case	TO-252-3, DPak (2 Leads + Tab), SC-63	Base Product Number	NJVMJD122

Parts with Similar Specifications

The three parts on the right have similar specifications to onsemi NJVMJD122T4G

Product Attribute				
Part Number	NJVMJD122T4G	NJVMJD117T4G	NJVMJB41CT4G	NJVMJD112T4G
Manufacturer	onsemi	onsemi	onsemi	onsemi
Current - Collector (Ic) (Max)	8 A	2 A	-	2 A
Frequency - Transition	4MHz	25MHz	3MHz	25MHz
Package	Tape & Reel (TR)	Tape & Reel (TR)	Tape & Reel (TR)	Tape & Reel (TR)
Power - Max	1.75 W	1.75 W	2 W	20 W
Transistor Type	NPN - Darlington	PNP - Darlington	NPN	NPN - Darlington
Vce Saturation (Max) @ Ib, Ic	4V @ 80mA, 8A	3V @ 40mA, 4A	1.5V @ 600mA, 6A	3V @ 40mA, 4A
Package / Case	TO-252-3, DPak (2 Leads + Tab), SC-63	TO-252-3, DPak (2 Leads + Tab), SC-63	TO-263-3, D ² Pak (2 Leads + Tab), TO-263AB	TO-252-3, DPak (2 Leads + Tab), SC-63
Mounting Type	Surface Mount	Surface Mount	Surface Mount	Surface Mount
Series	Automotive, AEC-Q101	-	-	-
DC Current Gain (hFE) (Min) @ Ic, Vce	1000 @ 4A, 4V	1000 @ 2A, 3V	15 @ 3A, 4V	1000 @ 2A, 3V
Supplier Device Package	DPAK	DPAK	D ² PAK	DPAK
Operating Temperature	-65°C ~ 150°C (TJ)	-65°C ~ 150°C (TJ)	-65°C ~ 150°C (TJ)	-65°C ~ 150°C (TJ)
Voltage - Collector Emitter Breakdown (Max)	100 V	100 V	-	100 V
Base Product Number	NJVMJD122	NJVMJD117	NJVMJB41	NJVMJD112
Current - Collector Cutoff (Max)	10µA	20µA	700µA	20µA

NJVMJD122T4G Datasheet PDF

Download NJVMJD122T4G pdf datasheets and onsemi documentation for NJVMJD122T4G - onsemi.

Datasheets

[MJD122_127, NJVMJD122_127.pdf](#)

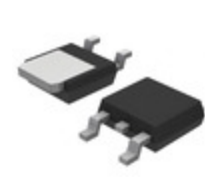
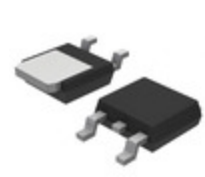
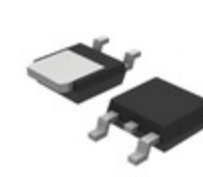
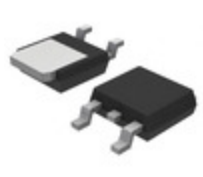
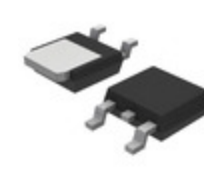
Environmental Information

[onsemi RoHS.pdf](#)

Customers Also Interested in

Recommended Products

NJVMJD117T4G	NJVMJB41CT4G	NJVMJD112T4G	NJVMJD3055T4G	NJVMJD253T4G-VF01	NJVMJD128T4G
onsemi TRANS PNP DARL 100V 2A DPAK	onsemi TRANS NPN 100V 6A D2PAK-3	onsemi TRANS NPN DARL 100V 2A DPAK	onsemi TRANS NPN 60V 10A DPAK	onsemi TRANS PNP 100V 4A DPAK	onsemi TRANS PNP DARL 120V 8A DPAK

**NJVMJB44H11T4G**onsemi
TRANS NPN 80V 10A D2PAK**NJVMJD253T4G**onsemi
TRANS PNP 100V 4A DPAK**NJVMJD31CG**onsemi
TRANS NPN 100V 3A DPAK**NJVMJB42CT4G**onsemi
TRANS PNP 100V 6A D2PAK**NJVMJD2955T4G**onsemi
TRANS PNP 60V 10A DPAK**NJVMJD127T4G**onsemi
TRANS PNP DARL 100V 8A DPAK**NJVMJD243T4G**onsemi
TRANS NPN 100V 4A DPAK**NJVMJB45H11T4G**onsemi
TRANS PNP 80V 10A D2PAK**NJVMJB44H11T4G**Fairchild Semiconductor
TRANS NPN 80V 10A D2PAK**NJVMJD210T4G**onsemi
TRANS PNP 25V 5A DPAK**NJVMJD31CRLG**onsemi
TRANS NPN 100V 3A DPAK**NJVMJB41CT4G**Fairchild Semiconductor
TRANS NPN D2PAK

Shipment

Delivery Time

In-stock items can be shipped within 24 hours. Some parts will be arranged for delivery within 1-2 days from the date all items arrive at our warehouse. And Allelco ships order once a day at about 17:00, except Sunday. Once the goods are shipped, the estimated delivery time depends on the shipping methods and Delivery destination. The table below shows are the logistic time for some common countries.

Delivery Cost

> Use your express account for shipment if you have one.

> Use our account for the shipment. Refer to the table below for the approximate charges.

(Different time frame / countries / package size has different price.)

Delivery Method

> Global Common Shipment by DHL / UPS / FedEx / TNT / EMS / SF we support.

> Others more shipping ways, please get in touch with your customer manager.

Common Countries Logistic Time Reference

Region	Country	Logistic Time(Day)
America	United States	5
	Brazil	7
Europe	Germany	5
	United Kingdom	4
	Italy	5
Oceania	Australia	6
	New Zealand	7
Asia	India	6
	Japan	7
Middle East	Israel	6

DHL & FedEx Shipment Charges Reference

Shipment charges(KG)	Reference DHL(USD\$)
0.00kg-1.00kg	USD\$60.00
1.00kg-2.00kg	USD\$70.00
2.00kg-3.00kg	USD\$80.00

Note: The above table is for reference only. There may have some data bias for the uncontrollable factors.
Contact us if you have any questions.

Payment Support

The payment method can be chosen from the methods shown below:

Wire Transfer (T/T, Bank Transfer), Western Union, Credit card, PayPal.



Your Faithful Supply Chain Partner -



Efficient Supply Management



Cost-Saving Procurement



Fast Sourcing & Delivery

Contact us if you have any questions.



Phone

+00852 9146 4856



Email

info@allelco.com

Certifications & Memberships



[View More](#)

Contact us

Address: Flat/Rm C 13/F Harvard Commercial Building 105-111 Thomson Road, Wan Chai, Hong Kong

Phone: +00852 9146 4856

Fax: +00852 3010 8510

Email: info@Allelco.com