

Image may be representation.  
See specifications for product details.



## AD5691RBRMZ-RL7

Manufacturer Part Number	<a href="#">AD5691RBRMZ-RL7</a>
Manufacturer	<a href="#">Analog Devices, Inc.</a>
Allelco Part Number	32D-AD5691RBRMZ-RL7
ECAD Model	<a href="#">Request Free CAD Models</a>
Parts Description	IC DAC 12BIT V-OUT 10MSOP
Package	10-TFSOP, 10-MSOP (0.118", 3.00mm Width)
Data sheet	<a href="#">Cylindrical Battery Holders.pdf</a>
RoHs Status	<b>ROHS3 Compliant</b>

**Get a Quote**

AD5691RBRMZ-RL7 - Analog Devices Inc..New Original in Stock. Download Linear Technology AD5691RBRMZ-RL7 datasheet/specifications on AllelcoElec.com.  
Request a quote for AD5691RBRMZ-RL7, please send us email: [info@allelco.com](mailto:info@allelco.com)

### Specifications

AD5691RBRMZ-RL7 Tech Specifications  
AD5691RBRMZ-RL7 - Analog Devices Inc. technical specifications, attributes, parameters

Product Attribute	Attribute Value	Product Attribute	Attribute Value
Manufacturer	Analog Devices, Inc.	Operating Temperature	-40°C ~ 105°C
Voltage - Supply, Digital	1.8V ~ 5.5V	Number of D/A Converters	1
Voltage - Supply, Analog	2.7V ~ 5.5V	Number of Bits	12
Supplier Device Package	10-MSOP	Mounting Type	Surface Mount
Settling Time	7µs	INL/DNL (LSB)	±1 (Max), ±1 (Max)
Series	nanoDAC+®	Differential Output	No
Reference Type	External, Internal	Data Interface	I²C
Package / Case	10-TFSOP, 10-MSOP (0.118", 3.00mm Width)	Base Product Number	AD5691
Package	Tape & Reel (TR)	Architecture	String DAC
Output Type	Voltage - Buffered		

### Parts with Similar Specifications

The three parts on the right have similar specifications to Analog Devices Inc. AD5691RBRMZ-RL7

Product Attribute				
Part Number	AD5691RBRMZ-RL7	<a href="#">AD5694RBRUZ</a>	<a href="#">AD5693BCPZ-RL7</a>	<a href="#">AD5694BCPZ-RL7</a>
Manufacturer	Analog Devices Inc.	Analog Devices Inc.	Analog Devices Inc.	Analog Devices Inc.
Number of Bits	12	12	16	12
Architecture	String DAC	String DAC	String DAC	String DAC
Supplier Device Package	10-MSOP	16-TSSOP	8-LFCSF-UD (2x2)	16-LFCSF (3x3)
Data Interface	I²C	I²C	I²C	I²C
Package	Tape & Reel (TR)	Tube	Tape & Reel (TR)	Tape & Reel (TR)
Mounting Type	Surface Mount	Surface Mount	Surface Mount	Surface Mount
INL/DNL (LSB)	±1 (Max), ±1 (Max)	±0.12, ±1 (Max)	±3 (Max), ±1 (Max)	±0.12, ±1 (Max)
Voltage - Supply, Digital	1.8V ~ 5.5V	1.8V ~ 5.5V	2.7V ~ 5.5V	1.8V ~ 5.5V
Output Type	Voltage - Buffered	Voltage - Buffered	Voltage - Buffered	Voltage - Buffered
Settling Time	7µs	7µs	7µs	7µs
Differential Output	No	No	No	No
Base Product Number	AD5691	AD5694	AD5693	AD5694
Number of D/A Converters	1	4	1	4
Reference Type	External, Internal	External, Internal	External	External
Package / Case	10-TFSOP, 10-MSOP (0.118", 3.00mm Width)	16-TSSOP (0.173", 4.40mm Width)	8-UFDFN Exposed Pad, CSP	16-WFQFN Exposed Pad, CSP
Voltage - Supply, Analog	2.7V ~ 5.5V	2.7V ~ 5.5V	2.7V ~ 5.5V	2.7V ~ 5.5V
Series	nanoDAC+®	nanoDAC+®	nanoDAC+®	nanoDAC+®
Operating Temperature	-40°C ~ 105°C	-40°C ~ 105°C	-40°C ~ 105°C	-40°C ~ 105°C

### AD5691RBRMZ-RL7 Datasheet PDF

Download AD5691RBRMZ-RL7 pdf datasheets and Analog Devices Inc. documentation for AD5691RBRMZ-RL7 - Analog Devices Inc..

#### Datasheets

[Cylindrical Battery Holders.pdf](#)

#### Other Related Documents

[Tape and Reel Packaging.pdf](#)

#### PCN Assembly/Origin

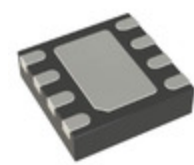
[2.73KHz.pdf](#)

## Customers Also Interested in

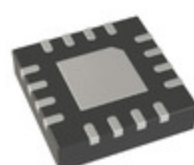
### Recommended Products



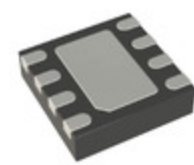
**AD5694RBRUZ**  
Analog Devices Inc.  
IC DAC 12BIT V-OUT 16TSSOP



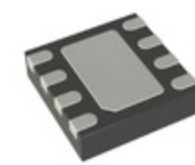
**AD5693BCPZ-RL7**  
Analog Devices Inc.  
IC DAC 16BIT V-OUT 8LFCSP



**AD5694BCPZ-RL7**  
Analog Devices Inc.  
IC DAC 12BIT V-OUT 16LFCSP



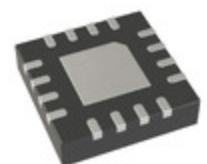
**AD5693RACPZ-1RL7**  
Analog Devices Inc.  
IC DAC 16BIT V-OUT 8LFCSP



**AD5693RACPZ-RL7**  
Analog Devices Inc.  
IC DAC 16BIT V-OUT 8LFCSP



**AD568JQ**  
Analog Devices Inc.  
IC DAC 12BIT A-OUT 24CDIP



**AD5689RWBCPZ-RL7**  
Analog Devices Inc.  
16-BIT 2-CH SPI NANODAC+WITH ON-



**AD5693RBRMZ-RL7**  
Analog Devices Inc.  
IC DAC 16BIT V-OUT 10MSOP



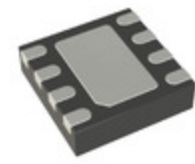
**AD5693RARMZ-RL7**  
Analog Devices Inc.  
IC DAC 16BIT V-OUT 10MSOP



**AD5693RBRMZ**  
Analog Devices Inc.  
IC DAC 16BIT V-OUT 10MSOP



**AD5693RARMZ**  
Analog Devices Inc.  
IC DAC 16BIT V-OUT 10MSOP



**AD5691RACPZ-1RL7**  
Analog Devices Inc.  
IC DAC 12BIT V-OUT 8LFCSP



**AD5691RBCPZ-RL7**  
Analog Devices Inc.  
IC DAC 12BIT V-OUT 8LFCSP



**AD568SQ/883B**  
Analog Devices Inc.  
IC DAC 12BIT HS MONO 35NS 24CDIP



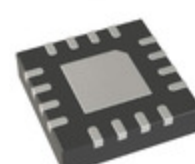
**AD568SQ**  
Analog Devices Inc.  
IC DAC 12BIT A-OUT 24CDIP



**AD568KQ**  
Analog Devices Inc.  
IC DAC 12BIT A-OUT 24CDIP



**AD5691RBRMZ**  
Analog Devices Inc.  
IC DAC 12BIT V-OUT 10MSOP



**AD5694RBCPZ-RL7**  
Analog Devices Inc.  
IC DAC 12BIT V-OUT 16LFCSP

## Shipment

### Delivery Time

In-stock items can be shipped within 24 hours. Some parts will be arranged for delivery within 1-2 days from the date all items arrive at our warehouse. And Allelco ships order once a day at about 17:00, except Sunday. Once the goods are shipped, the estimated delivery time depends on the shipping methods and Delivery destination. The table below shows are the logistic time for some common countries.

### Delivery Cost

- > Use your express account for shipment if you have one.
  - > Use our account for the shipment. Refer to the table below for the approximate charges.
- (Different time frame / countries / package size has different price.)

### Delivery Method

- > Global Common Shipment by DHL / UPS / FedEx / TNT / EMS / SF we support.
- > Others more shipping ways, please get in touch with your customer manager.

Common Countries Logistic Time Reference

Region	Country	Logistic Time(Day)
America	United States	5
	Brazil	7
Europe	Germany	5
	United Kingdom	4
	Italy	5
Oceania	Australia	6
	New Zealand	7
Asia	India	6
	Japan	7
Middle East	Israel	6

DHL & FedEx Shipment Charges Reference

Shipment charges(KG)	Reference DHL(USD\$)
0.00kg-1.00kg	USD\$60.00
1.00kg-2.00kg	USD\$70.00
2.00kg-3.00kg	USD\$80.00

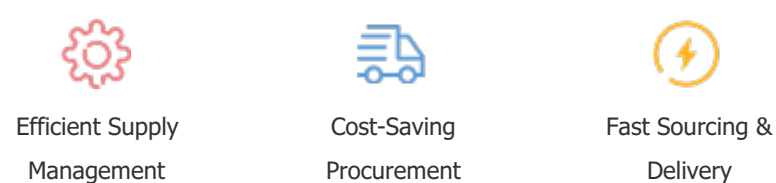
**Note:** The above table is for reference only. There may have some data bias for the uncontrollable factors. Contact us if you have any questions.

### Payment Support

The payment method can be chosen from the methods shown below:  
Wire Transfer (T/T, Bank Transfer), Western Union, Credit card, PayPal.



### Your Faithful Supply Chain Partner -



Contact us if you have any questions.



### Certifications & Memberships



[View More](#)