

Image may be representation.
See specifications for product details.



MA12070XUMA1

Manufacturer Part Number	MA12070XUMA1
Manufacturer	Infineon Technologies
Allelco Part Number	32D-MA12070XUMA1
ECAD Model	PCB Symbol, Footprint & 3D Model
Parts Description	IC AMP CLASS D STEREO 30W 64QFN
Package	64-VFQFN Exposed Pad
Data sheet	MA12070.pdf
RoHs Status	ROHS3 Compliant

Get a Quote

MA12070XUMA1 - Infineon Technologies. New Original in Stock. Download Linear Technology MA12070XUMA1 datasheet/specifications on AllelcoElec.com.
Request a quote for MA12070XUMA1, please send us email: info@allelco.com

Specifications

MA12070XUMA1 Tech Specifications
MA12070XUMA1 - Infineon Technologies technical specifications, attributes, parameters

Product Attribute	Attribute Value	Product Attribute	Attribute Value
Manufacturer	Infineon Technologies	Output Type	2-Channel (Stereo)
Voltage - Supply	4V ~ 26V	Operating Temperature	0°C ~ 85°C (TA)
Type	Class D	Mounting Type	Surface Mount
Supplier Device Package	PG-VQFN-64-6	Max Output Power x Channels @ Load	30W x 2 @ 80hm
Series	-	Features	Digital Inputs, I ² S, Mute, Short-Circuit and Thermal Protection, Undervoltage, Volume Control
Package / Case	64-VFQFN Exposed Pad	Base Product Number	MA12070
Package	Tape & Reel (TR)		

Parts with Similar Specifications

The three parts on the right have similar specifications to Infineon Technologies MA12070XUMA1

Product Attribute				
Part Number	MA12070XUMA1	MA12070PXUMA1	MA12040XUMA1	MA12040PXUMA1
Manufacturer	Infineon Technologies	Infineon Technologies	Infineon Technologies	Infineon Technologies
Max Output Power x Channels @ Load	30W x 2 @ 80hm	30W x 2 @ 80hm	40W x 2 @ 40hm	40W x 2 @ 40hm
Base Product Number	MA12070	MA12070	MA12040	MA12040
Package	Tape & Reel (TR)	Tape & Reel (TR)	Tape & Reel (TR)	Tape & Reel (TR)
Package / Case	64-VFQFN Exposed Pad	64-VFQFN Exposed Pad	64-VFQFN Exposed Pad	64-VFQFN Exposed Pad
Series	-	MERUS™	MERUS™	MERUS™
Mounting Type	Surface Mount	Surface Mount	Surface Mount	Surface Mount
Operating Temperature	0°C ~ 85°C (TA)	0°C ~ 85°C (TA)	0°C ~ 85°C (TA)	0°C ~ 85°C (TA)
Features	Digital Inputs, I ² S, Mute, Short-Circuit and Thermal Protection, Undervoltage, Volume Control	Digital Inputs, I ² S, Mute, Short-Circuit and Thermal Protection, Undervoltage, Volume Control	Digital Inputs, I ² C, Mute, Short-Circuit and Thermal Protection, Undervoltage, Volume Control	Digital Inputs, I ² C, Mute, Short-Circuit and Thermal Protection, Undervoltage, Volume Control
Voltage - Supply	4V ~ 26V	4V ~ 26V	4V ~ 18V	4V ~ 18V
Supplier Device Package	PG-VQFN-64-6	PG-VQFN-64-6	PG-VQFN-64-6	PG-VQFN-64-6
Type	Class D	Class D	Class D	Class D
Output Type	2-Channel (Stereo)	2-Channel (Stereo)	2-Channel (Stereo)	2-Channel (Stereo)

MA12070XUMA1 Datasheet PDF

Download MA12070XUMA1 pdf datasheets and Infineon Technologies documentation for MA12070XUMA1 - Infineon Technologies.

Datasheets

[MA12070.pdf](#)

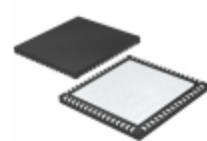
PCN Design/Specification

[Merus Design/Trademark Chg 1/Jul/2020.pdf](#)

Customers Also Interested in

Recommended Products

Panasonic



MA122-(TW)

Panasonic

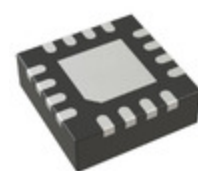


Panasonic

Panasonic

MA12070PXUMA1

Infineon Technologies
IC AMP CLASS D STEREO 30W
64QFN



MA120GQ-P

Monolithic Power Systems Inc.
SENSOR ANGLE SMD

MA1206X7R2200PF(222)

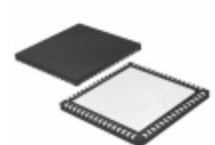
PDC

MA121-TX

Panasonic

MA121-(TW)

Panasonic



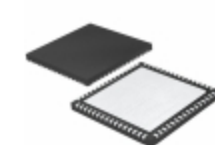
NO PICTURE



NO PICTURE



NO PICTURE



MA12040XUMA1
Infineon Technologies
IC AMP CLASS D STEREO 40W
64QFN

MA1210XR-225K-101ERG
PDC

MA1210XR106K250ERG
PDC

MA12070
Cypress Semiconductor
(Infineon Technologies)

MA120610FR005MZ
EVER OHMS

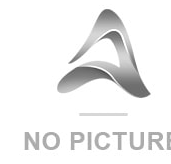
MA12040PXUMA1
Infineon Technologies
IC AMP CLASS D STEREO 40W
64QFN



Panasonic

Panasonic

Panasonic



MA1206X7R0.01UF(103)
PDC

MA121-(TX)
Panasonic

MA122-(TX)
Panasonic

MA121TX
Panasonic

MA1206X7R0.027UF(273)
PDC

MA12070P
Cypress Semiconductor
(Infineon Technologies)

Shipment

Delivery Time

In-stock items can be shipped within 24 hours. Some parts will be arranged for delivery within 1-2 days from the date all items arrive at our warehouse. And Allelco ships order once a day at about 17:00, except Sunday. Once the goods are shipped, the estimated delivery time depends on the shipping methods and Delivery destination. The table below shows are the logistic time for some common countries.

Delivery Cost

- > Use your express account for shipment if you have one.
- > Use our account for the shipment. Refer to the table below for the approximate charges.
(Different time frame / countries / package size has different price.)

Delivery Method

- > Global Common Shipment by DHL / UPS / FedEx / TNT / EMS / SF we support.
- > Others more shipping ways, please get in touch with your customer manager.

Common Countries Logistic Time Reference		
Region	Country	Logistic Time(Day)
America	United States	5
	Brazil	7
Europe	Germany	5
	United Kingdom	4
	Italy	5
Oceania	Australia	6
	New Zealand	7
Asia	India	6
	Japan	7
Middle East	Israel	6

DHL & FedEx Shipment Charges Reference	
Shipment charges(KG)	Reference DHL(USD\$)
0.00kg-1.00kg	USD\$60.00
1.00kg-2.00kg	USD\$70.00
2.00kg-3.00kg	USD\$80.00

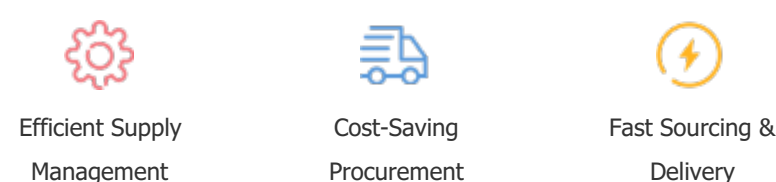
Note: The above table is for reference only. There may have some data bias for the uncontrollable factors.
Contact us if you have any questions.

Payment Support

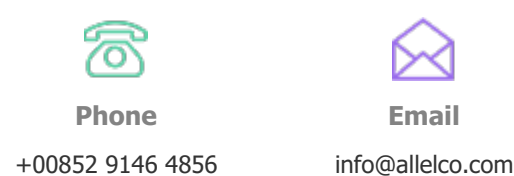
The payment method can be chosen from the methods shown below:
Wire Transfer (T/T, Bank Transfer), Western Union, Credit card,
PayPal.



Your Faithful Supply Chain Partner -



Contact us if you have any questions.



Certifications & Memberships



[View More](#)