

Image may be representation.
See specifications for product details.



XC2V1000-4FGG456I

Manufacturer Part Number	XC2V1000-4FGG456I
Manufacturer	AMD Xilinx
Allelco Part Number	32D-XC2V1000-4FGG456I
ECAD Model	Request Free CAD Models
Parts Description	IC FPGA 324 I/O 456FBGA
Package	456-BBGA
Data sheet	Virtex-II Platform FPGAs.pdf

Get a Quote

XC2V1000-4FGG456I - AMD.New Original in Stock. Download Linear Technology XC2V1000-4FGG456I datasheet/specifications on AllelcoElec.com.
Request a quote for XC2V1000-4FGG456I, please send us email: info@allelco.com

Specifications

XC2V1000-4FGG456I Tech Specifications
XC2V1000-4FGG456I - AMD technical specifications, attributes, parameters

Product Attribute	Attribute Value	Product Attribute	Attribute Value
Manufacturer	AMD Xilinx	Operating Temperature	-40°C ~ 100°C (TJ)
Voltage - Supply	1.425V ~ 1.575V	Number of LABs/CLBs	1280
Total RAM Bits	737280	Number of I/O	324
Supplier Device Package	456-FBGA (23x23)	Number of Gates	1000000
Series	Virtex®-II	Mounting Type	Surface Mount
Package / Case	456-BBGA	Base Product Number	XC2V1000
Package	Tray		

Parts with Similar Specifications

The three parts on the right have similar specifications to AMD XC2V1000-4FGG456I

Product Attribute				
Part Number	XC2V1000-4FGG456I	XC2V1000-5FF896C	XC2V1000-4FFG896I	XC2V1000-4FG456I
Manufacturer	AMD	AMD	AMD	AMD
Supplier Device Package	456-FBGA (23x23)	-	896-FCBGA (31x31)	456-FBGA (23x23)
Package / Case	456-BBGA	-	896-BBGA, FCBGA	456-BBGA
Package	Tray	Bulk	Tray	Tray
Mounting Type	Surface Mount	-	Surface Mount	Surface Mount
Total RAM Bits	737280	-	737280	737280
Voltage - Supply	1.425V ~ 1.575V	-	1.425V ~ 1.575V	1.425V ~ 1.575V
Number of LABs/CLBs	1280	-	1280	1280
Number of Gates	1000000	-	1000000	1000000
Series	Virtex®-II	*	Virtex®-II	Virtex®-II
Base Product Number	XC2V1000	XC2V1000	XC2V1000	XC2V1000
Operating Temperature	-40°C ~ 100°C (TJ)	-	-40°C ~ 100°C (TJ)	-40°C ~ 100°C (TJ)
Number of I/O	324	-	432	324

XC2V1000-4FGG456I Datasheet PDF

Download XC2V1000-4FGG456I pdf datasheets and AMD documentation for XC2V1000-4FGG456I - AMD.

Datasheets

[Virtex-II Platform FPGAs.pdf](#)

Environmental Information

[Xilinx REACH211 Cert.pdf](#)

PCN Obsolescence/ EOL

[Spartan, Virtex, XC17V00 24/Apr/2013.pdf](#)

Customers Also Interested in

Recommended Products

XC2V1000-5FF896C	XC2V1000-4FFG896I	XC2V1000-4FG456I	XC2V1000-4FFG256I	XC2V1000-4FFG256C	XC2V1000-4FFG256C	XC2V1000-4FGG456C
AMD VIRTEX-II PLATFORM FPGA, 1M SYST	AMD IC FPGA 432 I/O 896FCBGA	AMD IC FPGA 324 I/O 456FBGA	AMD IC FPGA 172 I/O 256FBGA	AMD IC FPGA 172 I/O 256FBGA	AMD IC FPGA 172 I/O 256FBGA	AMD IC FPGA 324 I/O 456FBGA



XC2V1000-4FG256C

AMD Xilinx

XC2V1000-5FG456

AMD Xilinx

XC2V1000-5FF896I

AMD
IC FPGA 432 I/O 896FCBGA

XC2V1000-4FG456C0765

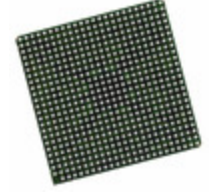
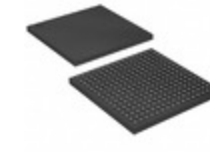
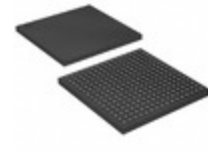
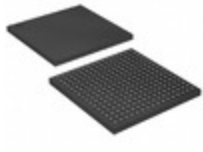
AMD Xilinx

XC2V1000-4FG456C

AMD Xilinx

XC2V1000-5FFG896C

AMD
IC FPGA 432 I/O 896FCBGA



XC2V1000-5FG256I

AMD
IC FPGA 172 I/O 256FBGA

XC2V1000-4FG256I

AMD
IC FPGA 172 I/O 256FBGA

XC2V1000-5BG575I

AMD
IC FPGA 328 I/O 575BGA

XC2V1000-4FG456CES

AMD Xilinx

XC2V1000-5FG256C

AMD
IC FPGA 172 I/O 256FBGA

XC2V1000-5BGG575I

AMD
IC FPGA 328 I/O 575BGA

Shipment

Delivery Time

In-stock items can be shipped within 24 hours. Some parts will be arranged for delivery within 1-2 days from the date all items arrive at our warehouse. And Allelco ships order once a day at about 17:00, except Sunday. Once the goods are shipped, the estimated delivery time depends on the shipping methods and Delivery destination. The table below shows are the logistic time for some common countries.

Delivery Cost

> Use your express account for shipment if you have one.

> Use our account for the shipment. Refer to the table below for the approximate charges.

(Different time frame / countries / package size has different price.)

Delivery Method

> Global Common Shipment by DHL / UPS / FedEx / TNT / EMS / SF we support.

> Others more shipping ways, please get in touch with your customer manager.

Common Countries Logistic Time Reference

Region	Country	Logistic Time(Day)
America	United States	5
	Brazil	7
Europe	Germany	5
	United Kingdom	4
	Italy	5
Oceania	Australia	6
	New Zealand	7
Asia	India	6
	Japan	7
Middle East	Israel	6

DHL & FedEx Shipment Charges Reference

Shipment charges(KG)	Reference DHL(USD\$)
0.00kg-1.00kg	USD\$60.00
1.00kg-2.00kg	USD\$70.00
2.00kg-3.00kg	USD\$80.00

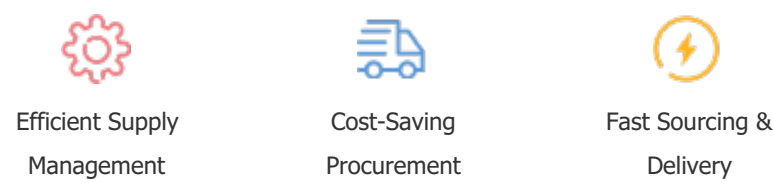
Note: The above table is for reference only. There may have some data bias for the uncontrollable factors.
Contact us if you have any questions.

Payment Support

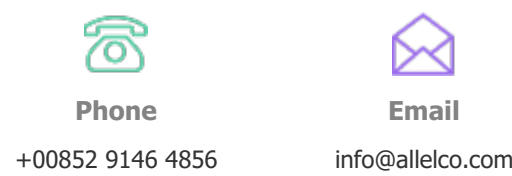
The payment method can be chosen from the methods shown below:
Wire Transfer (T/T, Bank Transfer), Western Union, Credit card, PayPal.



Your Faithful Supply Chain Partner -



Contact us if you have any questions.



Certifications & Memberships



[View More](#)



Contact us

Address: Flat/Rm C 13/F Harvard Commercial Building 105-111 Thomson Road, Wan Chai, Hong Kong

Phone: +00852 9146 4856

Fax: +00852 3010 8510

Email: info@allelco.com

Copyright © 2012-2023 AllelcoElec.com. All rights reserved.