



Image may be representation.
See specifications for product details.



ACST435-8BTR

Manufacturer Part Number	ACST435-8BTR
Manufacturer	STMicroelectronics
Allelco Part Number	32D-ACST435-8BTR
ECAD Model	PCB Footprint and Symbol
Parts Description	TRIAC 800V 4A DPAK
Package	TO-252-3, DPak (2 Leads + Tab), SC-63
Data sheet	ACST435-8BTR.pdf
RoHs Status	ROHS3 Compliant

Get a Quote

ACST435-8BTR - STMicroelectronics. New Original in Stock. Download Linear Technology ACST435-8BTR datasheet/specifications on AllelcoElec.com.
Request a quote for ACST435-8BTR, please send us email: info@allelco.com

Specifications

ACST435-8BTR Tech Specifications

ACST435-8BTR - STMicroelectronics technical specifications, attributes, parameters

Product Attribute	Attribute Value	Product Attribute	Attribute Value
Manufacturer	STMicroelectronics	Operating Temperature	-40°C ~ 125°C (TJ)
Voltage - Off State	800 V	Mounting Type	Surface Mount
Voltage - Gate Trigger (Vgt) (Max)	1.1 V	Current - On State (It (RMS)) (Max)	4 A
Triac Type	Standard	Current - Non Rep. Surge 50, 60Hz (I _{tsm})	30A, 32A
Supplier Device Package	DPAK	Current - Hold (I _h) (Max)	25 mA
Series	ACS™/A.S.D®	Current - Gate Trigger (Igt) (Max)	35 mA
Package / Case	TO-252-3, DPak (2 Leads + Tab), SC-63	Configuration	Single
Package	Tape & Reel (TR)	Base Product Number	ACST435

Parts with Similar Specifications

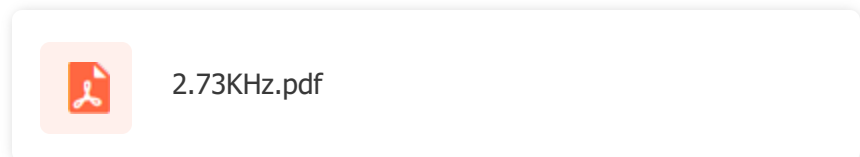
The three parts on the right have similar specifications to STMicroelectronics ACST435-8BTR

Product Attribute				
Part Number	ACST435-8BTR	ACST6-7ST	ACST610-8G	ACST210-8BTR
Manufacturer	STMicroelectronics	STMicroelectronics	STMicroelectronics	STMicroelectronics
Current - On State (It (RMS)) (Max)	4 A	6 A	6 A	2 A
Supplier Device Package	DPAK	TO-220	D2PAK	DPAK
Current - Hold (Ih) (Max)	25 mA	25 mA	25 mA	10 mA
Current - Non Rep. Surge 50, 60Hz (I _{tsm})	30A, 32A	45A, 50A	45A, 47A	8A, 8.4A
Base Product Number	ACST435	ACST6	ACST610	ACST210
Triac Type	Standard	Logic - Sensitive Gate	Logic - Sensitive Gate	Logic - Sensitive Gate
Series	ACS™/A.S.D®	-	ACS™/A.S.D®	ACS™/A.S.D®
Package / Case	TO-252-3, DPak (2 Leads + Tab), SC-63	TO-220-3	TO-263-3, D ² Pak (2 Leads + Tab), TO-263AB	TO-252-3, DPak (2 Leads + Tab), SC-63
Current - Gate Trigger (Igt) (Max)	35 mA	10 mA	10 mA	10 mA
Operating Temperature	-40°C ~ 125°C (TJ)	-30°C ~ 125°C (TJ)	-40°C ~ 125°C (TJ)	-40°C ~ 125°C (TJ)
Configuration	Single	Single	Single	Single
Voltage - Off State	800 V	700 V	800 V	800 V
Mounting Type	Surface Mount	Through Hole	Surface Mount	Surface Mount
Package	Tape & Reel (TR)	Tube	Tube	Tape & Reel (TR)
Voltage - Gate Trigger (Vgt) (Max)	1.1 V	1.5 V	1 V	1.1 V

ACST435-8BTR Datasheet PDF

Download ACST435-8BTR pdf datasheets and STMicroelectronics documentation for ACST435-8BTR - STMicroelectronics.

PCN Assembly/Origin



Customers Also Interested in

Recommended Products

ACST6-7ST STMicroelectronics TRIAC SENS GATE 700V 6A TO220AB	ACST610-8G STMicroelectronics TRIAC SENS GATE 800V 6A D2PAK	ACST210-8BTR STMicroelectronics TRIAC SENS GATE 800V 2A DPAK	ACST4-7SB-TR STMicroelectronics TRIAC 700V 4A DPAK	ACST410-8BTR STMicroelectronics TRIAC SENS GATE 800V 4A DPAK	ACST610-8T STMicroelectronics TRIAC SENS GATE 800V 6A TO220AB

**ACST210-8B**STMicroelectronics
TRIAC SENS GATE 800V 2A DPAK**ACST4-7CFP/7**

STMicroelectronics

**ACST610-8GTR**STMicroelectronics
TRIAC SENS GATE 800V 6A D2PAK**ACST6-7SR**STMicroelectronics
TRIAC SENS GATE 700V 6A I2PAK**ACST8-8CFP**STMicroelectronics
TRIAC 800V 8A TO220FP**ACST8-8CG-TR**STMicroelectronics
TRIAC 800V 8A D2PAK**ACST6-7SG**STMicroelectronics
TRIAC SENS GATE 700V 6A D2PAK**ACST210-8FP**STMicroelectronics
TRIAC SENS GATE 800V 2A TO220AB**ACST310-8B**STMicroelectronics
TRIAC SENS GATE 800V 3A DPAK**ACST67S**

STMicroelectronics

**ACST4-7CFPACST47C**

STMicroelectronics

**ACST2-8SB**STMicroelectronics
TRIAC SENS GATE 800V 2A DPAK

Shipment

Delivery Time

In-stock items can be shipped within 24 hours. Some parts will be arranged for delivery within 1-2 days from the date all items arrive at our warehouse. And Allelco ships order once a day at about 17:00, except Sunday. Once the goods are shipped, the estimated delivery time depends on the shipping methods and Delivery destination. The table below shows are the logistic time for some common countries.

Delivery Cost

> Use your express account for shipment if you have one.

> Use our account for the shipment. Refer to the table below for the approximate charges.

(Different time frame / countries / package size has different price.)

Delivery Method

> Global Common Shipment by DHL / UPS / FedEx / TNT / EMS / SF we support.

> Others more shipping ways, please get in touch with your customer manager.

Common Countries Logistic Time Reference		
Region	Country	Logistic Time(Day)
America	United States	5
	Brazil	7
Europe	Germany	5
	United Kingdom	4
	Italy	5
Oceania	Australia	6
	New Zealand	7
Asia	India	6
	Japan	7
Middle East	Israel	6

DHL & FedEx Shipment Charges Reference	
Shipment charges(KG)	Reference DHL(USD\$)
0.00kg-1.00kg	USD\$60.00
1.00kg-2.00kg	USD\$70.00
2.00kg-3.00kg	USD\$80.00

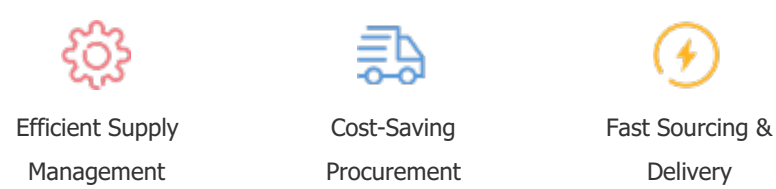
Note: The above table is for reference only. There may have some data bias for the uncontrollable factors.
Contact us if you have any questions.

Payment Support

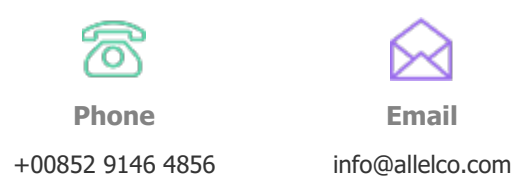
The payment method can be chosen from the methods shown below:
Wire Transfer (T/T, Bank Transfer), Western Union, Credit card,
PayPal.



Your Faithful Supply Chain Partner -



Contact us if you have any questions.



Certifications & Memberships



[View More](#)



Contact us

Address: Flat/Rm C 13/F Harvard Commercial Building 105-111 Thomson Road, Wan Chai, Hong Kong

Phone: +00852 9146 4856

Fax: +00852 3010 8510

Email: info@Allelco.com

Copyright © 2012-2023 AllelcoElec.com. All rights reserved.