



Image may be representation.  
See specifications for product details.



## ADM6316DZ26ARJZ-R7

Manufacturer Part Number	<a href="#">ADM6316DZ26ARJZ-R7</a>
Manufacturer	<a href="#">Analog Devices, Inc.</a>
Allelco Part Number	32D-ADM6316DZ26ARJZ-R7
ECAD Model	PCB Symbol, Footprint & 3D Mode
Parts Description	IC SUPERVISOR 1 CHANNEL SOT23-5
Package	SC-74A, SOT-753
Data sheet	<a href="#">ADM6316-22.pdf</a>
RoHs Status	ROHS3 Compliant

[Get a Quote](#)

ADM6316DZ26ARJZ-R7 - Analog Devices Inc..New Original in Stock. Download Linear Technology ADM6316DZ26ARJZ-R7 datasheet/specifications on AllelcoElec.com. Request a quote for ADM6316DZ26ARJZ-R7, please send us email: [info@allelco.com](mailto:info@allelco.com)

### Specifications

ADM6316DZ26ARJZ-R7 Tech Specifications  
ADM6316DZ26ARJZ-R7 - Analog Devices Inc. technical specifications, attributes, parameters

Product Attribute	Attribute Value	Product Attribute	Attribute Value
Manufacturer	Analog Devices, Inc.	Package / Case	SC-74A, SOT-753
Voltage - Threshold	2.63V	Package	Tape & Reel (TR)
Type	Simple Reset/Power-On Reset	Output	Push-Pull, Totem Pole
Supplier Device Package	SOT-23-5	Operating Temperature	-40°C ~ 85°C (TA)
Series	-	Number of Voltages Monitored	1
Reset Timeout	1.12s Minimum	Mounting Type	Surface Mount
Reset	Active Low	Base Product Number	ADM6316

### Parts with Similar Specifications

The three parts on the right have similar specifications to Analog Devices Inc. ADM6316DZ26ARJZ-R7

Product Attribute				
Part Number	ADM6316DZ26ARJZ-R7	<a href="#">ADM6316CY29ARJZ-R7</a>	<a href="#">ADM6316CY29ARJ-RL7</a>	<a href="#">ADM6316CY46ARJZ-R7</a>
Manufacturer	Analog Devices Inc.	Analog Devices Inc.	Analog Devices Inc.	Analog Devices Inc.
Reset Timeout	1.12s Minimum	140ms Minimum	140ms Minimum	140ms Minimum
Output	Push-Pull, Totem Pole	Push-Pull, Totem Pole	Push-Pull, Totem Pole	Push-Pull, Totem Pole
Supplier Device Package	SOT-23-5	SOT-23-5	SOT-23-5	SOT-23-5
Number of Voltages Monitored	1	1	1	1
Package	Tape & Reel (TR)	Tape & Reel (TR)	Tape & Reel (TR)	Tape & Reel (TR)
Type	Simple Reset/Power-On Reset	Simple Reset/Power-On Reset	Simple Reset/Power-On Reset	Simple Reset/Power-On Reset
Package / Case	SC-74A, SOT-753	SC-74A, SOT-753	SC-74A, SOT-753	SC-74A, SOT-753
Reset	Active Low	Active Low	Active Low	Active Low
Base Product Number	ADM6316	ADM6316	ADM6316	ADM6316
Mounting Type	Surface Mount	Surface Mount	Surface Mount	Surface Mount
Operating Temperature	-40°C ~ 85°C (TA)	-40°C ~ 85°C (TA)	-40°C ~ 85°C (TA)	-40°C ~ 85°C (TA)
Series	-	-	-	-
Voltage - Threshold	2.63V	2.93V	2.93V	4.63V

### ADM6316DZ26ARJZ-R7 Datasheet PDF

Download ADM6316DZ26ARJZ-R7 pdf datasheets and Analog Devices Inc. documentation for ADM6316DZ26ARJZ-R7 - Analog Devices Inc..

#### Datasheets

[ADM6316-22.pdf](#)

#### Other Related Documents

[Tape and Reel Packaging.pdf](#)

### Customers Also Interested in

#### Recommended Products



**ADM6318**  
ADI (Analog Devices, Inc.)

**ADM6316CY29ARJZ-REEL7**  
ADI (Analog Devices, Inc.)

**ADM6316CY29-ARJZ-R7**  
ADI (Analog Devices, Inc.)

**ADM6316CY29ARJZ-R7**  
Analog Devices Inc.  
IC SUPERVISOR 1 CHANNEL SOT23-5

**ADM6316CY30ARJZ-R7**  
ADI (Analog Devices, Inc.)

**ADM6316CY31ARJZ-REEL7**  
ADI (Analog Devices, Inc.)

**ADM6316CY29ARJZ**

ADI (Analog Devices, Inc.)

**ADM6318CY28ARJZ**

ADI (Analog Devices, Inc.)

**ADM6317**

ADI (Analog Devices, Inc.)

**ADM6316CY29ARJZ-RL**

ADI (Analog Devices, Inc.)

**ADM6316CY46ARJZ-R7**Analog Devices Inc.  
IC SUPERVISOR 1 CHANNEL SOT23-5**ADM6318CY29ARJZ**

ADI (Analog Devices, Inc.)

**ADM6318CY26ARJ-RL7**

ADI (Analog Devices, Inc.)

**ADM6316DZ31ARJZ-R7**Analog Devices Inc.  
IC SUPERVISOR 1 CHANNEL SOT23-5**ADM6318BX49ARJZ-R7**Analog Devices Inc.  
ADM6318BX49ARJZ-R7**ADM6316CY29ARJZ-RL7**

ADI (Analog Devices, Inc.)

**ADM6318CY29ARJZ-R7**Analog Devices Inc.  
ADM6318CY29ARJZ-R7

## Shipment

### Delivery Time

In-stock items can be shipped within 24 hours. Some parts will be arranged for delivery within 1-2 days from the date all items arrive at our warehouse. And Allelco ships order once a day at about 17:00, except Sunday. Once the goods are shipped, the estimated delivery time depends on the shipping methods and Delivery destination. The table below shows are the logistic time for some common countries.

### Delivery Cost

> Use your express account for shipment if you have one.

> Use our account for the shipment. Refer to the table below for the approximate charges.

(Different time frame / countries / package size has different price.)

### Delivery Method

> Global Common Shipment by DHL / UPS / FedEx / TNT / EMS / SF we support.

> Others more shipping ways, please get in touch with your customer manager.

Common Countries Logistic Time Reference		
Region	Country	Logistic Time(Day)
America	United States	5
	Brazil	7
Europe	Germany	5
	United Kingdom	4
	Italy	5
Oceania	Australia	6
	New Zealand	7
Asia	India	6
	Japan	7
Middle East	Israel	6

DHL & FedEx Shipment Charges Reference	
Shipment charges(KG)	Reference DHL(USD\$)
0.00kg-1.00kg	USD\$60.00
1.00kg-2.00kg	USD\$70.00
2.00kg-3.00kg	USD\$80.00

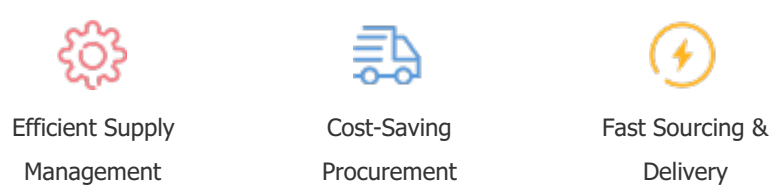
Note: The above table is for reference only. There may have some data bias for the uncontrollable factors.  
Contact us if you have any questions.

### Payment Support

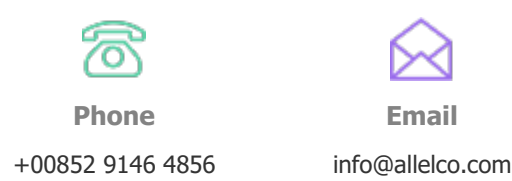
The payment method can be chosen from the methods shown below:  
Wire Transfer (T/T, Bank Transfer), Western Union, Credit card, PayPal.



### Your Faithful Supply Chain Partner -



Contact us if you have any questions.



### Certifications & Memberships



[View More](#)



### Contact us

Address: Flat/Rm C 13/F Harvard Commercial Building 105-111 Thomson Road, Wan Chai, Hong Kong

Phone: +00852 9146 4856

Fax: +00852 3010 8510

Email: info@allelco.com

Copyright © 2012-2023 AllelcoElec.com. All rights reserved.