



Image may be representation.
See specifications for product details.



ADG419BRMZ-REEL7

Manufacturer Part Number	ADG419BRMZ-REEL7
Manufacturer	Analog Devices, Inc.
Allelco Part Number	32D-ADG419BRMZ-REEL7
ECAD Model	Request Free CAD Models
Parts Description	IC SWITCH SPDT X 1 350HM 8MSOP
Package	8-TSSOP, 8-MSOP (0.118", 3.00mm Width)
Data sheet	ADG419.pdf
RoHs Status	ROHS3 Compliant

Get a Quote

ADG419BRMZ-REEL7 - Analog Devices Inc..New Original in Stock. Download Linear Technology ADG419BRMZ-REEL7 datasheet/specifications on AllelcoElec.com.
Request a quote for ADG419BRMZ-REEL7, please send us email: info@allelco.com

Specifications

ADG419BRMZ-REEL7 Tech Specifications
ADG419BRMZ-REEL7 - Analog Devices Inc. technical specifications, attributes, parameters

Product Attribute	Attribute Value	Product Attribute	Attribute Value
Manufacturer	Analog Devices, Inc.	Number of Circuits	1
Voltage - Supply, Single (V+)	12V	Multiplexer/Demultiplexer Circuit	2:1
Voltage - Supply, Dual (V±)	±15V	Mounting Type	Surface Mount
Switch Time (Ton, Toff) (Max)	-	Current - Leakage (IS(off)) (Max)	250pA
Switch Circuit	SPDT	Crosstalk	-90dB @ 1MHz
Supplier Device Package	8-MSOP	Charge Injection	-
Series	-	Channel-to-Channel Matching (ΔRon)	-
Package / Case	8-TSSOP, 8-MSOP (0.118", 3.00mm Width)	Channel Capacitance (CS(off), CD(off))	6pF
Package	Tape & Reel (TR)	Base Product Number	ADG419
Operating Temperature	-40°C ~ 125°C (TA)	-3db Bandwidth	-
On-State Resistance (Max)	350hm		

Parts with Similar Specifications

The three parts on the right have similar specifications to Analog Devices Inc. ADG419BRMZ-REEL7

Product Attribute				
Part Number	ADG419BRMZ-REEL7	ADG419BRM-REEL7	ADG419SRMZ-EP-RL7	ADG419BR-REEL7
Manufacturer	Analog Devices Inc.	Analog Devices Inc.	Analog Devices Inc.	Analog Devices Inc.
Channel Capacitance (CS(off), CD(off))	6pF	6pF	6pF	6pF
Voltage - Supply, Dual (V±)	±15V	±15V	±15V	±15V
Number of Circuits	1	1	1	1
On-State Resistance (Max)	350hm	350hm	350hm	350hm
Crosstalk	-90dB @ 1MHz	-90dB @ 1MHz	-90dB @ 1MHz	-90dB @ 1MHz
Switch Circuit	SPDT	SPDT	SPDT	SPDT
Operating Temperature	-40°C ~ 125°C (TA)	-40°C ~ 125°C (TA)	-55°C ~ 125°C (TA)	-40°C ~ 125°C (TA)
-3db Bandwidth	-	-	-	-
Multiplexer/Demultiplexer Circuit	2:1	2:1	2:1	2:1
Voltage - Supply, Single (V+)	12V	12V	12V	12V
Package / Case	8-TSSOP, 8-MSOP (0.118", 3.00mm Width)	8-TSSOP, 8-MSOP (0.118", 3.00mm Width)	8-TSSOP, 8-MSOP (0.118", 3.00mm Width)	8-SOIC (0.154", 3.90mm Width)
Series	-	-	-	-
Charge Injection	-	-	-	-
Switch Time (Ton, Toff) (Max)	-	-	-	-
Base Product Number	ADG419	ADG419	ADG419	ADG419
Supplier Device Package	8-MSOP	8-MSOP	8-MSOP	8-SOIC
Mounting Type	Surface Mount	Surface Mount	Surface Mount	Surface Mount
Package	Tape & Reel (TR)	Tape & Reel (TR)	Tape & Reel (TR)	Tape & Reel (TR)
Channel-to-Channel Matching (ΔRon)	-	-	-	-
Current - Leakage (IS(off)) (Max)	250pA	250pA	250pA	250pA

ADG419BRMZ-REEL7 Datasheet PDF

Download ADG419BRMZ-REEL7 pdf datasheets and Analog Devices Inc. documentation for ADG419BRMZ-REEL7 - Analog Devices Inc..

Datasheets

[ADG419.pdf](#)

Other Related Documents

[Tape and Reel Packaging.pdf](#)



Customers Also Interested in

Recommended Products



ADG419BRM-REEL7

Analog Devices Inc.
IC SWITCH SPDT X 1 350HM 8MSOP



ADG419SRMZ-EP-RL7

Analog Devices Inc.
IC SWITCH SPDT X 1 350HM 8MSOP



ADG419BR-REEL7

Analog Devices Inc.
IC SWITCH SPDT X 1 350HM 8SOIC



ADG419TQ

Analog Devices Inc.
IC SWITCH SPDT X 1 350HM 8CERDIP



ADG426BN

Analog Devices Inc.
IC MUX 16:1 800HM 28DIP



ADG419BRZ

Analog Devices Inc.
IC SWITCH SPDT X 1 350HM 8SOIC



ADG419BRM-REEL

Analog Devices Inc.
IC SWITCH SPDT X 1 350HM 8MSOP



ADG419BN

Analog Devices Inc.
IC SWITCH SPDT X 1 350HM 8DIP



ADG419BRMZ-REEL

Analog Devices Inc.
IC SWITCH SPDT X 1 350HM 8MSOP



ADG419BR-REEL

Analog Devices Inc.
IC SWITCH SPDT X 1 350HM 8SOIC



ADG419BRMZ

Analog Devices Inc.
IC SWITCH SPDT X 1 350HM 8MSOP



ADG419BRZ-REEL7

Analog Devices Inc.
IC SWITCH SPDT X 1 350HM 8SOIC



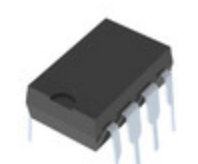
ADG419BR

Analog Devices Inc.
IC SWITCH SPDT X 1 350HM 8SOIC



ADG426BNZ

Analog Devices Inc.
IC MUX 16:1 800HM 28DIP



ADG419BNZ

Analog Devices Inc.
IC SWITCH SPDT X 1 350HM 8DIP



ADG419BRZ-REEL

Analog Devices Inc.
IC SWITCH SPDT X 1 350HM 8SOIC



ADG419BRM

Analog Devices Inc.
IC SWITCH SPDT X 1 350HM 8MSOP



ADG426BRSZ

Analog Devices Inc.
IC MUX 16:1 800HM 28SSOP

Shipment

Delivery Time

In-stock items can be shipped within 24 hours. Some parts will be arranged for delivery within 1-2 days from the date all items arrive at our warehouse. And Allelco ships order once a day at about 17:00, except Sunday. Once the goods are shipped, the estimated delivery time depends on the shipping methods and Delivery destination. The table below shows are the logistic time for some common countries.

Delivery Cost

- > Use your express account for shipment if you have one.
 - > Use our account for the shipment. Refer to the table below for the approximate charges.
- (Different time frame / countries / package size has different price.)

Delivery Method

- > Global Common Shipment by DHL / UPS / FedEx / TNT / EMS / SF we support.
- > Others more shipping ways, please get in touch with your customer manager.

Common Countries Logistic Time Reference

Region	Country	Logistic Time(Day)
America	United States	5
	Brazil	7
Europe	Germany	5
	United Kingdom	4
	Italy	5
Oceania	Australia	6
	New Zealand	7
Asia	India	6
	Japan	7
Middle East	Israel	6

DHL & FedEx Shipment Charges Reference

Shipment charges(KG)	Reference DHL(USD\$)
0.00kg-1.00kg	USD\$60.00
1.00kg-2.00kg	USD\$70.00
2.00kg-3.00kg	USD\$80.00

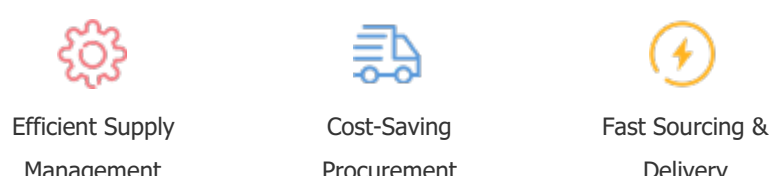
Note: The above table is for reference only. There may have some data bias for the uncontrollable factors.
Contact us if you have any questions.

Payment Support

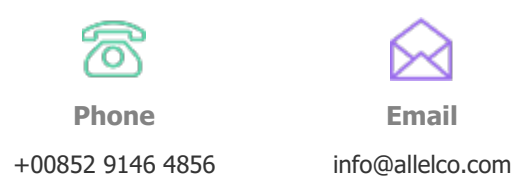
The payment method can be chosen from the methods shown below:
Wire Transfer (T/T, Bank Transfer), Western Union, Credit card, PayPal.



Your Faithful Supply Chain Partner -



Contact us if you have any questions.



Certifications & Memberships



View More