

Image may be representation.
See specifications for product details.

BAS40-06LT1G

Manufacturer Part Number	BAS40-06LT1G
Manufacturer	onsemi
Allelco Part Number	32D-BAS40-06LT1G
ECAD Model	Request Free CAD Models
Parts Description	DIODE ARRAY SCHOTTKY 40V SOT23-3
Package	TO-236-3, SC-59, SOT-23-3
Data sheet	BAS,SBAS40-06LT1G.pdf
RoHs Status	ROHS3 Compliant

Get a Quote



BAS40-06LT1G - onsemi.New Original in Stock. Download Linear Technology BAS40-06LT1G datasheet/specifications on AllelcoElec.com.
Request a quote for BAS40-06LT1G, please send us email: info@allelco.com

Specifications

BAS40-06LT1G Tech Specifications

BAS40-06LT1G - onsemi technical specifications, attributes, parameters

Product Attribute	Attribute Value	Product Attribute	Attribute Value
Manufacturer	onsemi	Package	Tape & Reel (TR)
Voltage - Forward (Vf) (Max) @ If	1 V @ 40 mA	Operating Temperature - Junction	-55°C ~ 150°C
Voltage - DC Reverse (Vr) (Max)	40 V	Mounting Type	Surface Mount
Technology	Schottky	Diode Configuration	1 Pair Common Anode
Supplier Device Package	SOT-23-3 (TO-236)	Current - Reverse Leakage @ Vr	1 µA @ 25 V
Speed	Small Signal =< 200mA (Io), Any Speed	Current - Average Rectified (Io) (per Diode)	120mA (DC)
Series	-	Base Product Number	BAS40
Package / Case	TO-236-3, SC-59, SOT-23-3		

Parts with Similar Specifications

The three parts on the right have similar specifications to onsemi BAS40-06LT1G

Product Attribute				
Part Number	BAS40-06LT1G	BAS40-06E6327	BAS40-06LT1	BAS40-06-HE3-18
Manufacturer	onsemi	Infineon Technologies	onsemi	Vishay General Semiconductor - Diodes Division
Base Product Number	BAS40	BAS40	BAS40	BAS40
Current - Average Rectified (Io) (per Diode)	120mA (DC)	120mA (DC)	-	200mA
Supplier Device Package	SOT-23-3 (TO-236)	PG-SOT23	-	SOT-23-3
Operating Temperature - Junction	-55°C ~ 150°C	150°C	-	125°C (Max)
Series	-	-	*	Automotive, AEC-Q101
Technology	Schottky	Schottky	-	Schottky
Mounting Type	Surface Mount	Surface Mount	-	Surface Mount
Diode Configuration	1 Pair Common Anode	1 Pair Common Anode	-	1 Pair Common Anode
Package	Tape & Reel (TR)	Bulk	Tape & Reel (TR)	Tape & Reel (TR)
Voltage - Forward (Vf) (Max) @ If	1 V @ 40 mA	1 V @ 40 mA	-	1 V @ 40 mA
Current - Reverse Leakage @ Vr	1 µA @ 25 V	1 µA @ 30 V	-	100 nA @ 30 V
Speed	Small Signal =< 200mA (Io), Any Speed	Small Signal =< 200mA (Io), Any Speed	-	Small Signal =< 200mA (Io), Any Speed
Voltage - DC Reverse (Vr) (Max)	40 V	40 V	-	40 V
Package / Case	TO-236-3, SC-59, SOT-23-3	TO-236-3, SC-59, SOT-23-3	-	TO-236-3, SC-59, SOT-23-3

BAS40-06LT1G Datasheet PDF

Download BAS40-06LT1G pdf datasheets and onsemi documentation for BAS40-06LT1G - onsemi.

Datasheets

[BAS,SBAS40-06LT1G.pdf](#)

Environmental Information

[onsemi RoHS.pdf](#)

PCN Design/Specification

[SOT23 16/Sep/2016.pdf](#)

[BAS40 DS Rev 9/Dec/2021.pdf](#)

PCN Assembly/Origin

[Mold Compound 08/Sep/2019.pdf](#)

Customers Also Interested in

Recommended Products



BAS40-06E-6327
Siemens



BAS40-06W/DG/C2
Freescale / NXP Semiconductors



BAS40-06E6327
Infineon Technologies
BAS40 - HIGH SPEED SWITCHING,
CL



BAS40-06LT1
onsemi
DIODE SCHOTTKY 40V CA SOT23



BAS40-07
Nexperia



BAS40-06-HE3-18
Vishay General Semiconductor -
Diodes Division
DIODE ARRAY SCHOTTKY 40V
SOT23



BAS40-06T-7-F
Diodes Incorporated
DIODE ARRAY SCHOTTKY 40V
SOT523



BAS40-06Q-13-F
Diodes Incorporated



BAS40-06-7-F
Diodes Incorporated
DIODE ARRAY SCHOTTKY 40V
SOT23-3



BAS40-06HMFH
LAPIS Technology



BAS40-06-V
Electro-Films (EFI) / Vishay



BAS40-06W/DG/B2
Freescale / NXP Semiconductors



BAS40-06T-7-F-36
Diodes Incorporated
DIODE ARRAY SCHOTTKY 40V
SOT523



BAS40-06-E3-08
Vishay General Semiconductor -
Diodes Division
DIODE ARRAY SCHOTTKY 40V
SOT23



BAS40-06W



BAS40-06-VS08
Electro-Films (EFI) / Vishay



BAS40-07 E6327
Cypress Semiconductor
(Infineon Technologies)



BAS40-06W-E6327
Cypress Semiconductor
(Infineon Technologies)

Shipment

Delivery Time

In-stock items can be shipped within 24 hours. Some parts will be arranged for delivery within 1-2 days from the date all items arrive at our warehouse. And Allelco ships order once a day at about 17:00, except Sunday. Once the goods are shipped, the estimated delivery time depends on the shipping methods and Delivery destination. The table below shows are the logistic time for some common countries.

Delivery Cost

- > Use your express account for shipment if you have one.
- > Use our account for the shipment. Refer to the table below for the approximate charges.
(Different time frame / countries / package size has different price.)

Delivery Method

- > Global Common Shipment by DHL / UPS / FedEx / TNT / EMS / SF we support.
- > Others more shipping ways, please get in touch with your customer manager.

Common Countries Logistic Time Reference		
Region	Country	Logistic Time(Day)
America	United States	5
	Brazil	7
Europe	Germany	5
	United Kingdom	4
	Italy	5
Oceania	Australia	6
	New Zealand	7
Asia	India	6
	Japan	7
Middle East	Israel	6

DHL & FedEx Shipment Charges Reference	
Shipment charges(KG)	Reference DHL(USD\$)
0.00kg-1.00kg	USD\$60.00
1.00kg-2.00kg	USD\$70.00
2.00kg-3.00kg	USD\$80.00

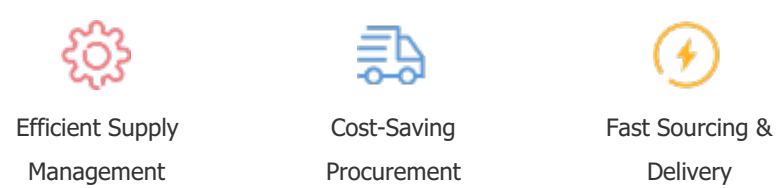
Note: The above table is for reference only. There may have some data bias for the uncontrollable factors.
Contact us if you have any questions.

Payment Support

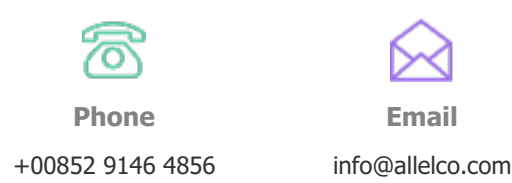
The payment method can be chosen from the methods shown below:
Wire Transfer (T/T, Bank Transfer), Western Union, Credit card,
PayPal.



Your Faithful Supply Chain Partner -



Contact us if you have any questions.



Certifications & Memberships



[View More](#)

Contact us

Address: Flat/Rm C 13/F Harvard Commercial Building 105-111 Thomson Road, Wan Chai, Hong Kong
Phone: +00852 9146 4856
Fax: +00852 3010 8510
Email: info@Allelco.com