



# MAX16916GUB/V+T

Manufacturer Part Number	<b>MAX16916GUB/V+T</b>
Manufacturer	<b>Maxim Integrated</b>
Allelco Part Number	32D-MAX16916GUB/V+T
ECAD Model	Request Free CAD Models
Parts Description	IC BATT USB DATA LINE PROT UMAX
Package	
Data sheet	MAX16916GUB/V+T.pdf
RoHS Status	ROHS3 Compliant



**Get a Quote**

MAX16916GUB/V+T - Analog Devices Inc./Maxim Integrated.New Original in Stock. Download Linear Technology MAX16916GUB/V+T datasheet/specifications on AllelcoElec.com.  
Request a quote for MAX16916GUB/V+T, please send us email: [info@allelco.com](mailto:info@allelco.com)

## Specifications

MAX16916GUB/V+T Tech Specifications  
MAX16916GUB/V+T - Analog Devices Inc./Maxim Integrated technical specifications, attributes, parameters

Product Attribute	Attribute Value	Product Attribute	Attribute Value
Manufacturer	Maxim Integrated	Interface	-
Series	Automotive, AEC-Q100	Function	-
Package	Tape & Reel (TR)	Fault Protection	-
Operating Temperature	-	Battery Chemistry	-
Number of Cells	-	Base Product Number	MAX16916

## Parts with Similar Specifications

The three parts on the right have similar specifications to Analog Devices Inc./Maxim Integrated MAX16916GUB/V+T

Product Attribute				
Part Number	MAX16916GUB/V+T	MAX16915AUB+T	MAX16910DATA8/V+T	MAX16913AGEE/V
Manufacturer	Analog Devices Inc./Maxim Integrated	Analog Devices Inc./Maxim Integrated	Analog Devices Inc./Maxim Integrated	Analog Devices / Maxim Integrated
Base Product Number	MAX16916	MAX16915	MAX16910	-
Function	-	Battery Protection	-	-
Series	Automotive, AEC-Q100	-	Automotive, AEC-Q100	-
Battery Chemistry	-	-	-	-
Package	Tape & Reel (TR)	Tape & Reel (TR)	Tape & Reel (TR)	-
Number of Cells	-	-	-	-
Interface	-	-	-	-
Fault Protection	-	Over Voltage, Reverse Battery	-	-
Operating Temperature	-	-40°C ~ 125°C (TA)	-40°C ~ 125°C (TA)	-

## MAX16916GUB/V+T Datasheet PDF

Download MAX16916GUB/V+T pdf datasheets and Analog Devices Inc./Maxim Integrated documentation for MAX16916GUB/V+T - Analog Devices Inc./Maxim Integrated.

## Environmental Information

Maxim Integrated REACH.pdf

Maxim Integrated RoHS Cert.pdf

Material Declaration MAX16916GUB/V+T.pdf

## Customers Also Interested in

### Recommended Products

 <b>MAX16910DATA8/V+T</b> Analog Devices Inc./Maxim Integrated IC REG LIN POS ADJ 200MA 8TDFN	 <b>MAX16913AGEE/V</b> Analog Devices / Maxim Integrated	 <b>MAX16917DGEE</b> Analog Devices / Maxim Integrated	 <b>MAX16917BGEE/V+T</b> Analog Devices Inc./Maxim Integrated IC PROT USB2.0 VBUS QSOP	 <b>MAX16917BGEE/V</b> Analog Devices / Maxim Integrated	 <b>MAX16919BGEE/V+</b> Analog Devices Inc./Maxim Integrated IC USB2.0 PROTECT HS AUTO 16QSOP
 <b>MAX16913AGEE/V+T</b> Analog Devices Inc./Maxim Integrated IC CURRENT SENSE SWITCH 16QSOP	 <b>MAX16913AGEE+</b> Analog Devices Inc./Maxim Integrated IC CURRENT SENSE SWITCH 16-QSOP	 <b>MAX16913AGEE</b> Analog Devices / Maxim Integrated	 <b>MAX16917BGEE/V+</b> Analog Devices Inc./Maxim Integrated IC PROT USB2.0 VBUS QSOP	 <b>MAX16910DAA9/V+T</b> Analog Devices / Maxim Integrated	 <b>MAX16917DGEE/V</b> Analog Devices / Maxim Integrated
 <b>MAX16910CATA9/V+T</b> Analog Devices Inc./Maxim Integrated IC REG LIN POS ADJ 200MA 8TDFN	 <b>MAX16917BGEE/V+CAT</b> Analog Devices Inc./Maxim Integrated 2A AUTOMOTIVE USB PROTECTOR	 <b>MAX16913GEE+</b> Analog Devices Inc./Maxim Integrated IC CURRENT SENSE SWITCH 16-QSOP	 <b>MAX16913AGEE+T</b> Analog Devices Inc./Maxim Integrated IC CURRENT SENSE SWITCH 16-QSOP	 <b>MAX16917DGEE/V+T</b> Analog Devices Inc./Maxim Integrated IC PROT USB2.0 2A AUTO QSOP	 <b>MAX16915AUB+T</b> Analog Devices Inc./Maxim Integrated IC BATT PROTECTION 10UMAX

## Shipment

### Delivery Time

In-stock items can be shipped within 24 hours. Some parts will be arranged for delivery within 1-2 days from the date all items arrive at our warehouse. And Allelco ships order once a day at about 17:00, except Sunday. Once the goods are shipped, the estimated delivery time depends on the shipping methods and Delivery destination. The table below shows are the logistic time for some common countries.

### Delivery Cost

- > Use your express account for shipment if you have one.
- > Use our account for the shipment. Refer to the table below for the approximate charges.  
(Different time frame / countries / package size has different price.)

### Delivery Method

- > Global Common Shipment by DHL / UPS / FedEx / TNT / EMS / SF we support.
- > Others more shipping ways, please get in touch with your customer manager.

Common Countries Logistic Time Reference		
Region	Country	Logistic Time(Day)
America	United States	5
	Brazil	7
Europe	Germany	5
	United Kingdom	4
	Italy	5
Oceania	Australia	6
	New Zealand	7
Asia	India	6
	Japan	7
Middle East	Israel	6

DHL & FedEx Shipment Charges Reference	
Shipment charges(KG)	Reference DHL(USD\$)
0.00kg-1.00kg	USD\$60.00
1.00kg-2.00kg	USD\$70.00
2.00kg-3.00kg	USD\$80.00

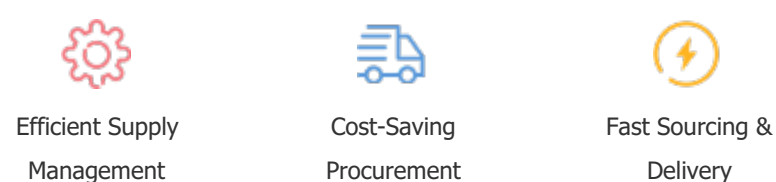
**Note:** The above table is for reference only. There may have some data bias for the uncontrollable factors.  
Contact us if you have any questions.

### Payment Support

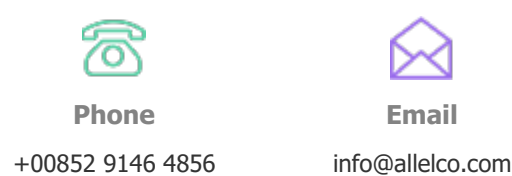
The payment method can be chosen from the methods shown below:  
Wire Transfer (T/T, Bank Transfer), Western Union, Credit card, PayPal.



### Your Faithful Supply Chain Partner -



Contact us if you have any questions.



### Certifications & Memberships



[View More](#)