

Image may be representation.  
See specifications for product details.



## AD845KNZ

Manufacturer Part Number	<b>AD845KNZ</b>
Manufacturer	<b>Analog Devices, Inc.</b>
Allelco Part Number	32D-AD845KNZ
ECAD Model	PCB Symbol, Footprint & 3D Model
Parts Description	IC OPAMP JFET 1 CIRCUIT 8DIP
Package	8-DIP (0.300", 7.62mm)
Data sheet	<b>AD845.pdf</b>
RoHs Status	<b>ROHS3 Compliant</b>

**Get a Quote**

AD845KNZ - Analog Devices Inc..New Original in Stock. Download Linear Technology AD845KNZ datasheet/specifications on AllelcoElec.com.  
Request a quote for AD845KNZ, please send us email: [info@allelco.com](mailto:info@allelco.com)

### Specifications

AD845KNZ Tech Specifications

AD845KNZ - Analog Devices Inc. technical specifications, attributes, parameters

Product Attribute	Attribute Value	Product Attribute	Attribute Value
Manufacturer	Analog Devices, Inc.	Operating Temperature	0°C ~ 70°C
Voltage - Supply Span (Min)	9.5 V	Number of Circuits	1
Voltage - Supply Span (Max)	36 V	Mounting Type	Through Hole
Voltage - Input Offset	100 µV	Gain Bandwidth Product	16 MHz
Supplier Device Package	8-PDIP	Current - Supply	10mA
Slew Rate	100V/µs	Current - Output / Channel	50 mA
Series	-	Current - Input Bias	500 pA
Package / Case	8-DIP (0.300", 7.62mm)	Base Product Number	AD845
Package	Tube	Amplifier Type	J-FET
Output Type	-		

### Parts with Similar Specifications

The three parts on the right have similar specifications to Analog Devices Inc. AD845KNZ

Product Attribute				
Part Number	AD845KNZ	AD845KN	AD845JNZ	AD845AQ
Manufacturer	Analog Devices Inc.	Analog Devices Inc.	Analog Devices Inc.	Analog Devices Inc.
Output Type	-	-	-	-
Voltage - Supply Span (Min)	9.5 V	9.5 V	9.5 V	9.5 V
Gain Bandwidth Product	16 MHz	16 MHz	16 MHz	16 MHz
Current - Supply	10mA	10mA	10mA	10mA
Operating Temperature	0°C ~ 70°C	0°C ~ 70°C	0°C ~ 70°C	-40°C ~ 85°C
Voltage - Input Offset	100 µV	100 µV	700 µV	700 µV
Package / Case	8-DIP (0.300", 7.62mm)	8-DIP (0.300", 7.62mm)	8-DIP (0.300", 7.62mm)	8-CDIP (0.300", 7.62mm)
Supplier Device Package	8-PDIP	8-PDIP	8-PDIP	8-CERDIP
Mounting Type	Through Hole	Through Hole	Through Hole	Through Hole
Series	-	-	-	-
Slew Rate	100V/µs	100V/µs	100V/µs	100V/µs
Current - Output / Channel	50 mA	50 mA	50 mA	50 mA
Voltage - Supply Span (Max)	36 V	36 V	36 V	36 V
Package	Tube	Tube	Tube	Tube
Base Product Number	AD845	AD845	AD845	AD845
Current - Input Bias	500 pA	500 pA	750 pA	750 pA
Number of Circuits	1	1	1	1
Amplifier Type	J-FET	J-FET	J-FET	J-FET

### AD845KNZ Datasheet PDF

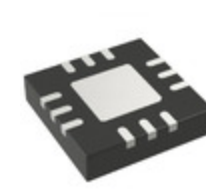
Download AD845KNZ pdf datasheets and Analog Devices Inc. documentation for AD845KNZ - Analog Devices Inc..

#### Datasheets

[AD845.pdf](#)

### Customers Also Interested in

#### Recommended Products



**AD8452ASTZ**Analog Devices Inc.  
IC AFE/PWM CONTROLLER 48LQFP**AD8452ASTZ**Analog Devices Inc.  
IC OPAMP JFET 1 CIRCUIT 8DIP**AD8451ASTZ-RL**Analog Devices Inc.  
IC AFE 2 CHAN 80LQFP**AD8451JRZ**

ADI (Analog Devices, Inc.)

**AD845KN**Analog Devices Inc.  
IC OPAMP JFET 16MHZ PREC 8DIP**AD845AQ**Analog Devices Inc.  
IC OPAMP JFET 1 CIRCUIT 8CERDIP**AD845JR**

ADI (Analog Devices, Inc.)

**AD846AN**Analog Devices Inc.  
IC OPAMP CFA 1 CIRCUIT 8DIP**AD8465WBCPZ-R7**Analog Devices Inc.  
IC COMPARATOR 1 W/LATCH 12LFCSP**AD8469WBRMZ**Analog Devices Inc.  
IC COMPARATOR 1 GEN PUR 8MSOP**AD846AR**

ADI (Analog Devices, Inc.)

**AD8468WBKSZ-R7**Analog Devices Inc.  
IC COMPARATOR 1 GEN PUR SC70-6**AD845BQ**Analog Devices Inc.  
IC OPAMP JFET 1 CIRCUIT 8CERDIP**AD8469WBRMZ-RL**Analog Devices Inc.  
IC COMPARATOR 1 GEN PUR 8MSOP**AD845SQ/883B**Analog Devices Inc.  
IC OPAMP JFET 1 CIRCUIT**AD845JN**Analog Devices Inc.  
IC OPAMP JFET 1 CIRCUIT 8DIP**AD8452ASTZ-RL**Analog Devices Inc.  
IC AFE/PWM CONTROLLER 48LQFP**AD845SQ**Analog Devices Inc.  
IC OPAMP JFET 1 CIRCUIT 8CERDIP

## Shipment

### Delivery Time

In-stock items can be shipped within 24 hours. Some parts will be arranged for delivery within 1-2 days from the date all items arrive at our warehouse. And Allelco ships order once a day at about 17:00, except Sunday. Once the goods are shipped, the estimated delivery time depends on the shipping methods and Delivery destination. The table below shows are the logistic time for some common countries.

### Delivery Cost

> Use your express account for shipment if you have one.

> Use our account for the shipment. Refer to the table below for the approximate charges.

(Different time frame / countries / package size has different price.)

### Delivery Method

> Global Common Shipment by DHL / UPS / FedEx / TNT / EMS / SF we support.

> Others more shipping ways, please get in touch with your customer manager.

**Common Countries Logistic Time Reference**

Region	Country	Logistic Time(Day)
America	United States	5
	Brazil	7
Europe	Germany	5
	United Kingdom	4
	Italy	5
Oceania	Australia	6
	New Zealand	7
Asia	India	6
	Japan	7
Middle East	Israel	6

**DHL & FedEx Shipment Charges Reference**

Shipment charges(KG)	Reference DHL(USD\$)
0.00kg-1.00kg	USD\$60.00
1.00kg-2.00kg	USD\$70.00
2.00kg-3.00kg	USD\$80.00

**Note:** The above table is for reference only. There may have some data bias for the uncontrollable factors.

Contact us if you have any questions.

## Payment Support

The payment method can be chosen from the methods shown below:

Wire Transfer (T/T, Bank Transfer), Western Union, Credit card, PayPal.



## Your Faithful Supply Chain Partner -



Efficient Supply Management



Cost-Saving Procurement



Fast Sourcing & Delivery

Contact us if you have any questions.



Phone

+00852 9146 4856



Email

info@allelco.com

## Certifications & Memberships



[View More](#)

### Contact us

Address: Flat/Rm C 13/F Harvard Commercial Building 105-111 Thomson Road, Wan Chai, Hong Kong

Phone: +00852 9146 4856

Fax: +00852 3010 8510

Email: info@Allelco.com