

Image may be representation.  
See specifications for product details.



## MAX639ESA

Manufacturer Part Number	<b>MAX639ESA</b>
Manufacturer	<b>Maxim Integrated</b>
Allelco Part Number	32D-MAX639ESA
ECAD Model	Request Free CAD Models
Parts Description	<b>STEP-DOWN DC-DC CONVERTER</b>
Package	<b>8-SOIC (0.154", 3.90mm Width)</b>
Data sheet	MAX639ESA.pdf

**Get a Quote**

MAX639ESA - Analog Devices Inc./Maxim Integrated. New Original in Stock. Download Linear Technology MAX639ESA datasheet/specifications on AllelcoElec.com.  
Request a quote for MAX639ESA, please send us email: [info@allelco.com](mailto:info@allelco.com)

### Specifications

MAX639ESA Tech Specifications  
MAX639ESA - Analog Devices Inc./Maxim Integrated technical specifications, attributes, parameters

Product Attribute	Attribute Value	Product Attribute	Attribute Value
Manufacturer	Maxim Integrated	Package	Bulk
Voltage - Output (Min/Fixed)	1.3V (5V)	Output Type	Adjustable (Fixed)
Voltage - Output (Max)	11.5V	Output Configuration	Positive
Voltage - Input (Min)	4V	Operating Temperature	-40°C ~ 85°C
Voltage - Input (Max)	11.5V	Number of Outputs	1
Topology	Buck	Mounting Type	Surface Mount
Synchronous Rectifier	No	Function	Step-Down
Supplier Device Package	8-SOIC	Frequency - Switching	-
Series	-	Current - Output	225mA
Package / Case	8-SOIC (0.154", 3.90mm Width)		

### Parts with Similar Specifications

The three parts on the right have similar specifications to Analog Devices Inc./Maxim Integrated MAX639ESA

Product Attribute				
Part Number	MAX639ESA	MAX639CSA	MAX639CPA	MAX639ESA+T
Manufacturer	Analog Devices Inc./Maxim Integrated	Analog Devices Inc./Maxim Integrated	Analog Devices Inc./Maxim Integrated	Analog Devices Inc./Maxim Integrated
Number of Outputs	1	1	1	1
Voltage - Input (Max)	11.5V	11.5V	11.5V	11.5V
Voltage - Output (Min/Fixed)	1.3V (5V)	1.3V (5V)	1.3V (5V)	1.3V (5V)
Output Configuration	Positive	Positive	Positive	Positive
Package / Case	8-SOIC (0.154", 3.90mm Width)	8-SOIC (0.154", 3.90mm Width)	8-DIP (0.300", 7.62mm)	8-SOIC (0.154", 3.90mm Width)
Package	Bulk	Tube	Tube	Tape & Reel (TR)
Synchronous Rectifier	No	No	No	No
Frequency - Switching	-	-	-	-
Operating Temperature	-40°C ~ 85°C	0°C ~ 70°C (TA)	0°C ~ 70°C (TA)	-40°C ~ 85°C (TA)
Topology	Buck	Buck	Buck	Buck
Mounting Type	Surface Mount	Surface Mount	Through Hole	Surface Mount
Voltage - Output (Max)	11.5V	11.5V	11.5V	11.5V
Series	-	-	-	-
Voltage - Input (Min)	4V	4V	4V	4V
Current - Output	225mA	225mA	225mA	225mA
Output Type	Adjustable (Fixed)	Adjustable (Fixed)	Adjustable (Fixed)	Adjustable (Fixed)
Function	Step-Down	Step-Down	Step-Down	Step-Down
Supplier Device Package	8-SOIC	8-SOIC	8-PDIP	8-SOIC

### Customers Also Interested in

#### Recommended Products

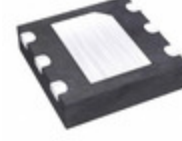
 <b>MAX6397SATA+T</b> Analog Devices Inc./Maxim Integrated IC SUPERVISOR 1 CHANNEL 8TDFN	 <b>MAX6401-29UK</b> LUMILEDS	 <b>MAX6399ATA+T</b> Analog Devices Inc./Maxim Integrated IC SUPERVISOR 1 CHANNEL 8TDFN	 <b>MAX6400-31UK</b> LUMILEDS	 <b>MAX6397LATA+T</b> Analog Devices Inc./Maxim Integrated IC SUPERVISOR 1 CHANNEL 8TDFN	 <b>MAX639CSA</b> Analog Devices Inc./Maxim Integrated IC REG BUCK ADJ/5V 225MA 8SOIC

**MAX6398ATT**Analog Devices Inc./Maxim Integrated  
MAX6398 OVP SWITCH**MAX639CSA+T**Analog Devices Inc./Maxim Integrated  
IC REG BUCK ADJ/5V 225MA 8SOIC**MAX639CPA**Analog Devices Inc./Maxim Integrated  
IC REG BUCK ADJ/5V 225MA 8DIP**MAX6400-26UK**

LUMILEDS

**MAX639ESA+T**Analog Devices Inc./Maxim Integrated  
IC REG BUCK ADJ/5V 225MA 8SOIC**MAX639EPA**

Analog Devices / Maxim Integrated

**MAX6401BS22**Analog Devices Inc./Maxim Integrated  
IC SUPERVISOR 1 CHANNEL 4UCSP**MAX6398ATT+T**Analog Devices Inc./Maxim Integrated  
IC SUPERVISOR 1 CHANNEL 6TDFN**MAX6400BS29+T**Analog Devices Inc./Maxim Integrated  
IC SUPERVISOR MPU 4-UCSP**MAX6401BS22+T**Analog Devices Inc./Maxim Integrated  
IC SUPERVISOR MPU 4-UCSP**MAX6400-22UK**

LUMILEDS

**MAX639CPA+**Analog Devices Inc./Maxim Integrated  
IC REG BUCK ADJ/5V 225MA 8DIP**Shipment****Delivery Time**

In-stock items can be shipped within 24 hours. Some parts will be arranged for delivery within 1-2 days from the date all items arrive at our warehouse. And Allelco ships order once a day at about 17:00, except Sunday. Once the goods are shipped, the estimated delivery time depends on the shipping methods and Delivery destination. The table below shows are the logistic time for some common countries.

**Delivery Cost**

> Use your express account for shipment if you have one.

> Use our account for the shipment. Refer to the table below for the approximate charges.

(Different time frame / countries / package size has different price.)

**Delivery Method**

> Global Common Shipment by DHL / UPS / FedEx / TNT / EMS / SF we support.

> Others more shipping ways, please get in touch with your customer manager.

**Common Countries Logistic Time Reference**

Region	Country	Logistic Time(Day)
America	United States	5
	Brazil	7
Europe	Germany	5
	United Kingdom	4
	Italy	5
Oceania	Australia	6
	New Zealand	7
Asia	India	6
	Japan	7
Middle East	Israel	6

**DHL & FedEx Shipment Charges Reference**

Shipment charges(KG)	Reference DHL(USD\$)
0.00kg-1.00kg	USD\$60.00
1.00kg-2.00kg	USD\$70.00
2.00kg-3.00kg	USD\$80.00

Note: The above table is for reference only. There may have some data bias for the uncontrollable factors.

Contact us if you have any questions.

**Payment Support**

The payment method can be chosen from the methods shown below:

Wire Transfer (T/T, Bank Transfer), Western Union, Credit card, PayPal.

**Your Faithful Supply Chain Partner -**

Efficient Supply Management



Cost-Saving Procurement



Fast Sourcing & Delivery

Contact us if you have any questions.



Phone

+00852 9146 4856



Email

info@allelco.com

**Certifications & Memberships**

[View More](#)



WWW.ALLELCOELEC.COM

**Contact us**

Address: Flat/Rm C 13/F Harvard Commercial Building 105-111 Thomson Road, Wan Chai, Hong Kong

Phone: +00852 9146 4856

Fax: +00852 3010 8510

Email: info@allelco.com

Copyright © 2012-2023 AllelcoElec.com. All rights reserved.