

Image may be representation.
See specifications for product details.



MAX367CWN+

Manufacturer Part Number	MAX367CWN+
Manufacturer	Maxim Integrated
Allelco Part Number	32D-MAX367CWN+
ECAD Model	Request Free CAD Models
Parts Description	TVS DEVICE MIXED 40V 18SOIC
Package	18-SOIC (0.295", 7.50mm Width)
Data sheet	Cylindrical Battery Holders.pdf
RoHs Status	ROHS3 Compliant

Get a Quote

MAX367CWN+ - Analog Devices Inc./Maxim Integrated. New Original in Stock. Download Linear Technology MAX367CWN+ datasheet/specifications on AllelcoElec.com. Request a quote for MAX367CWN+, please send us email: info@allelco.com

Specifications

MAX367CWN+ Tech Specifications
MAX367CWN+ - Analog Devices Inc./Maxim Integrated technical specifications, attributes, parameters

Product Attribute	Attribute Value	Product Attribute	Attribute Value
Manufacturer	Maxim Integrated	Package	Tube
Voltage - Clamping	±40V	Number of Circuits	8
Technology	Mixed Technology	Mounting Type	Surface Mount
Supplier Device Package	18-SOIC	Base Product Number	MAX367
Series	-	Applications	General Purpose
Package / Case	18-SOIC (0.295", 7.50mm Width)		

Parts with Similar Specifications

The three parts on the right have similar specifications to Analog Devices Inc./Maxim Integrated MAX367CWN+

Product Attribute				
Part Number	MAX367CWN+	MAX367CWN	MAX367EWN	MAX367EWN+
Manufacturer	Analog Devices Inc./Maxim Integrated	Analog Devices Inc./Maxim Integrated	Analog Devices Inc./Maxim Integrated	Analog Devices Inc./Maxim Integrated
Applications	General Purpose	General Purpose	General Purpose	General Purpose
Supplier Device Package	18-SOIC	18-SOIC	18-SOIC	18-SOIC
Base Product Number	MAX367	MAX367	MAX367	MAX367
Package / Case	18-SOIC (0.295", 7.50mm Width)	18-SOIC (0.295", 7.50mm Width)	18-SOIC (0.295", 7.50mm Width)	18-SOIC (0.295", 7.50mm Width)
Series	-	-	-	-
Number of Circuits	8	8	8	8
Voltage - Clamping	±40V	±40V	±40V	40V
Technology	Mixed Technology	Mixed Technology	Mixed Technology	MOSFET Array
Mounting Type	Surface Mount	Surface Mount	Surface Mount	Surface Mount
Package	Tube	Tube	Tube	Tube

MAX367CWN+ Datasheet PDF

Download MAX367CWN+ pdf datasheets and Analog Devices Inc./Maxim Integrated documentation for MAX367CWN+ - Analog Devices Inc./Maxim Integrated.

Datasheets

[Cylindrical Battery Holders.pdf](#)

Environmental Information

[Maxim Integrated REACH.pdf](#)

[Maxim Integrated RoHS Cert.pdf](#)

Application Notes

[Automatic Test Equipment on a Budget.pdf](#)

Customers Also Interested in

Recommended Products

MAX368CPN+ Analog Devices Inc./Maxim Integrated IC MUX 8:1 1.8KOHM 18DIP	MAX3679AETJ2T Microchip Technology IC CLOCK GENERATOR 32TQFN	MAX367CWN Analog Devices Inc./Maxim Integrated TVS DEVICE MIXED 40V 18SOIC	MAX3679AETJ+T Analog Devices Inc./Maxim Integrated IC CLOCK GENERATOR 32TQFN	MAX3675ECJ Analog Devices / Maxim Integrated	MAX3680EAI Analog Devices Inc./Maxim Integrated IC DESERIALZR 622MBPS TTL 28SSOP

MAX367EWNAnalog Devices Inc./Maxim Integrated
TVS DEVICE MIXED 40V 18SOIC**MAX367EWN+**Analog Devices Inc./Maxim Integrated
TVS DEVICE MOSFET ARR 40V 18SOIC**MAX3681EAG**Analog Devices Inc./Maxim Integrated
IC DESERIALIZR 622MBPS TTL**MAX3691ECJ**Analog Devices Inc./Maxim Integrated
SDH/SONET 1:4 DESERIALIZER**MAX3681EAG-T**Analog Devices Inc./Maxim Integrated
IC DESERIALIZER TTL 24SSOP**MAX3693ECJ**Analog Devices Inc./Maxim Integrated
IC SERIALIZR 622MBPS LVDS 32LQFP**MAX3676EHJ+T**Analog Devices Inc./Maxim Integrated
IC CLOCK RECOVERY 32-TQFP**MAX368EPN+**Analog Devices Inc./Maxim Integrated
IC MUX 8:1 1.8KOHM 18DIP**MAX3680EAI+T**Analog Devices Inc./Maxim Integrated
IC DESERIALIZR 622MBPS TTL**MAX3674ECM+T**Microsemi
IC NTWK CLOCK SYNTH 2-OUT 48LQFP**MAX3676EHJ+**Analog Devices Inc./Maxim Integrated
IC CLOCK RECOVERY 32-TQFP**MAX3676EHJ**Analog Devices Inc./Maxim Integrated
IC RECOV/RETIME 622MBPS 32-TQFP**Shipment****Delivery Time**

In-stock items can be shipped within 24 hours. Some parts will be arranged for delivery within 1-2 days from the date all items arrive at our warehouse. And Allelco ships order once a day at about 17:00, except Sunday. Once the goods are shipped, the estimated delivery time depends on the shipping methods and Delivery destination. The table below shows are the logistic time for some common countries.

Delivery Cost

> Use your express account for shipment if you have one.

> Use our account for the shipment. Refer to the table below for the approximate charges.

(Different time frame / countries / package size has different price.)

Delivery Method

> Global Common Shipment by DHL / UPS / FedEx / TNT / EMS / SF we support.

> Others more shipping ways, please get in touch with your customer manager.

Common Countries Logistic Time Reference		
Region	Country	Logistic Time(Day)
America	United States	5
	Brazil	7
Europe	Germany	5
	United Kingdom	4
	Italy	5
Oceania	Australia	6
	New Zealand	7
Asia	India	6
	Japan	7
Middle East	Israel	6

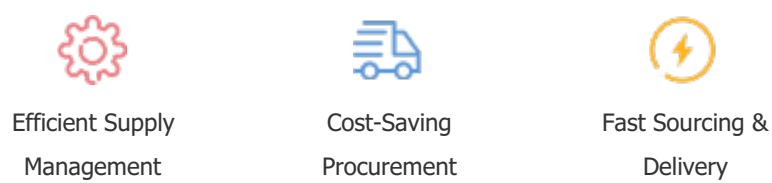
DHL & FedEx Shipment Charges Reference	
Shipment charges(KG)	Reference DHL(USD\$)
0.00kg-1.00kg	USD\$60.00
1.00kg-2.00kg	USD\$70.00
2.00kg-3.00kg	USD\$80.00

Note: The above table is for reference only. There may have some data bias for the uncontrollable factors.
Contact us if you have any questions.

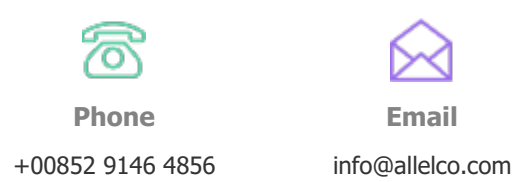
Payment Support

The payment method can be chosen from the methods shown below:

Wire Transfer (T/T, Bank Transfer), Western Union, Credit card, PayPal.

**Your Faithful Supply Chain Partner -**

Contact us if you have any questions.

**Certifications & Memberships**

[View More](#)

Contact us

Address: Flat/Rm C 13/F Harvard Commercial Building 105-111 Thomson Road, Wan Chai, Hong Kong

Phone: +00852 9146 4856

Fax: +00852 3010 8510

Email: info@Allelco.com