



Image may be representation.
See specifications for product details.



MPXAZ6115A6U

Manufacturer Part Number	MPXAZ6115A6U
Manufacturer	NXP Semiconductors
Allelco Part Number	32D-MPXAZ6115A6U
ECAD Model	Request Free CAD Models
Parts Description	SENSOR 16.68PSIA 4.7V
Package	8-SMD Module
Data sheet	Cylindrical Battery Holders.pdf
RoHs Status	ROHS3 Compliant

Get a Quote

MPXAZ6115A6U - NXP USA Inc..New Original in Stock. Download Linear Technology MPXAZ6115A6U datasheet/specifications on AllelcoElec.com.
Request a quote for MPXAZ6115A6U, please send us email: info@allelco.com

Specifications

MPXAZ6115A6U Tech Specifications

MPXAZ6115A6U - NXP USA Inc. technical specifications, attributes, parameters

Product Attribute	Attribute Value	Product Attribute	Attribute Value
Manufacturer	NXP Semiconductors	Output Type	Analog Voltage
Voltage - Supply	4.75V ~ 5.25V	Output	0.2 V ~ 4.7 V
Termination Style	SMD (SMT) Tab	Operating Temperature	-40°C ~ 125°C
Supplier Device Package	-	Operating Pressure	2.18PSI ~ 16.68PSI (15kPa ~ 115kPa)
Series	MPXAZ6115A	Mounting Type	Surface Mount
Pressure Type	Absolute	Maximum Pressure	58.02PSI (400kPa)
Port Style	No Port	Features	Temperature Compensated
Port Size	-	Base Product Number	MPXAZ6
Package / Case	8-SMD Module	Applications	Board Mount
Package	Tube	Accuracy	±1.5%

Parts with Similar Specifications

The three parts on the right have similar specifications to NXP USA Inc. MPXAZ6115A6U

Product Attribute				
Part Number	MPXAZ6115A6U	MPXAZ6115AC6T1	MPXA6115AC6U	MPXAZ4115A6T1
Manufacturer	NXP USA Inc.	Freescale Semiconductor	NXP USA Inc.	NXP USA Inc.
Output	0.2 V ~ 4.7 V	0.2 V ~ 4.7 V	0.2 V ~ 4.7 V	0.2 V ~ 4.8 V
Package / Case	8-SMD Module	8-SMD, Gull Wing, Top Port	8-SMD, Gull Wing, Top Port	8-SMD Module
Port Size	-	Male - 0.13" (3.17mm) Tube	Male - 0.13" (3.17mm) Tube	-
Voltage - Supply	4.75V ~ 5.25V	4.75V ~ 5.25V	4.75V ~ 5.25V	4.85V ~ 5.35V
Pressure Type	Absolute	Absolute	Absolute	Absolute
Termination Style	SMD (SMT) Tab	Gull Wing	Gull Wing	SMD (SMT) Tab
Operating Pressure	2.18PSI ~ 16.68PSI (15kPa ~ 115kPa)	2.18PSI ~ 16.68PSI (15kPa ~ 115kPa)	2.18PSI ~ 16.68PSI (15kPa ~ 115kPa)	2.18PSI ~ 16.68PSI (15kPa ~ 115kPa)
Supplier Device Package	-	-	-	-
Base Product Number	MPXAZ6	-	MPXA6115	MPXAZ4
Port Style	No Port	Barbless	Barbless	No Port
Accuracy	±1.5%	±1.5%	±1.5%	±1.5%
Maximum Pressure	58.02PSI (400kPa)	58.02PSI (400kPa)	58.02PSI (400kPa)	58.02PSI (400kPa)
Mounting Type	Surface Mount	Surface Mount	Surface Mount	Surface Mount
Applications	Board Mount	Board Mount	Board Mount	Board Mount
Package	Tube	Bulk	Tube	Tape & Reel (TR)
Operating Temperature	-40°C ~ 125°C	-40°C ~ 125°C	-40°C ~ 125°C	-40°C ~ 125°C
Output Type	Analog Voltage	Analog Voltage	Analog Voltage	Analog Voltage
Features	Temperature Compensated	Temperature Compensated	Temperature Compensated	Temperature Compensated
Series	MPXAZ6115A	MPXAZ6115A	MPXA6115A	MPXAZ4115A

MPXAZ6115A6U Datasheet PDF

Download MPXAZ6115A6U pdf datasheets and NXP USA Inc. documentation for MPXAZ6115A6U - NXP USA Inc..

Datasheets

[Cylindrical Battery Holders.pdf](#)

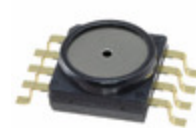
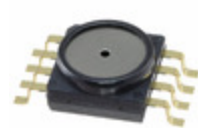
PCN Packaging

[2.73KHz.pdf](#)

Environmental Information

Customers Also Interested in

Recommended Products



MPXAZ6115AC6T1

Freescle Semiconductor
SENSOR 16.68PSIA 0.13" 4.7V

MPXA6115AC6U

NXP USA Inc.
SENSOR 16.68PSIA 0.13" 4.7V

MPXAZ4115A6T1

NXP USA Inc.
SENSOR 16.68PSIA 4.8V

MPXA6115A6U

NXP USA Inc.
SENSOR 16.68PSIA 4.7V

MPXH6115A6U

Freescle Semiconductor
SENSOR 16.68PSIA 4.7V 8SSOP

MPXAZ4100A6U

NXP USA Inc.
SENSOR 15.23PSIA 4.9V



MPXA6115AC7U

Freescle Semiconductor
SENSOR 16.68PSIA 0.13" 4.7V 8DIP



MPXH6115A6U

NXP USA Inc.
SENSOR 16.68PSIA 4.7V 8SSOP



MPXAZ4115A6T1

Freescle Semiconductor
SENSOR 16.68PSIA 4.8V



MPXH6101A6T1

NXP USA Inc.
SENSOR 15.23PSIA 5V 8SSOP



MPXAZ6115APT1

Freescle Semiconductor
SENSOR 16.68PSIA 0.13" 4.7V SSOP



MPXAZ6115APT1

NXP USA Inc.
SENSOR 16.68PSIA 0.13" 4.7V 8SOP



MPXA6115AC7U

NXP USA Inc.
SENSOR 16.68PSIA 0.13" 4.7V 8DIP



MPXH6115A6T1

NXP USA Inc.
SENSOR 16.68PSIA 4.7V 8SSOP



MPXA6115AC6T1

NXP USA Inc.
SENSOR 16.68PSIA 0.13" 4.7V



MPXAZ6115AC6U

NXP USA Inc.
SENSOR 16.68PSIA 0.13" 4.7V



MPXH6115AC6T1

NXP USA Inc.
SENSOR 16.68PSIA 0.13" 4.7V SSOP



MPXAZ4250AC6T1

NXP USA Inc.
SENSOR 36.26PSIA 0.13" 4.9V

Shipment

Delivery Time

In-stock items can be shipped within 24 hours. Some parts will be arranged for delivery within 1-2 days from the date all items arrive at our warehouse. And Alleco ships order once a day at about 17:00, except Sunday. Once the goods are shipped, the estimated delivery time depends on the shipping methods and Delivery destination. The table below shows are the logistic time for some common countries.

Delivery Cost

- > Use your express account for shipment if you have one.
 - > Use our account for the shipment. Refer to the table below for the approximate charges.
- (Different time frame / countries / package size has different price.)

Delivery Method

- > Global Common Shipment by DHL / UPS / FedEx / TNT / EMS / SF we support.
- > Others more shipping ways, please get in touch with your customer manager.

Common Countries Logistic Time Reference

Region	Country	Logistic Time(Day)
America	United States	5
	Brazil	7
Europe	Germany	5
	United Kingdom	4
	Italy	5
Oceania	Australia	6
	New Zealand	7
Asia	India	6
	Japan	7
Middle East	Israel	6

DHL & FedEx Shipment Charges Reference

Shipment charges(KG)	Reference DHL(USD\$)
0.00kg-1.00kg	USD\$60.00
1.00kg-2.00kg	USD\$70.00
2.00kg-3.00kg	USD\$80.00

Note: The above table is for reference only. There may have some data bias for the uncontrollable factors.

Contact us if you have any questions.

Payment Support

The payment method can be chosen from the methods shown below:

Wire Transfer (T/T, Bank Transfer), Western Union, Credit card, PayPal.



Your Faithful Supply Chain Partner -



Efficient Supply Management



Cost-Saving Procurement



Fast Sourcing & Delivery

Contact us if you have any questions.



Phone

+00852 9146 4856



Email

info@alleco.com

Certifications & Memberships



View More