

Image may be representation.
See specifications for product details.



ADP5300ACPZ-2-R7

Manufacturer Part Number	ADP5300ACPZ-2-R7
Manufacturer	Analog Devices, Inc.
Allelco Part Number	32D-ADP5300ACPZ-2-R7
ECAD Model	Request Free CAD Models
Parts Description	IC REG BUCK PROG 10LFCSP
Package	10-VDFN Exposed Pad, CSP
Data sheet	Cylindrical Battery Holders.pdf
RoHs Status	ROHS3 Compliant

Get a Quote

ADP5300ACPZ-2-R7 - Analog Devices Inc..New Original in Stock. Download Linear Technology ADP5300ACPZ-2-R7 datasheet/specifications on AllelcoElec.com.
Request a quote for ADP5300ACPZ-2-R7, please send us email: info@allelco.com

Specifications

ADP5300ACPZ-2-R7 Tech Specifications
ADP5300ACPZ-2-R7 - Analog Devices Inc. technical specifications, attributes, parameters

Product Attribute	Attribute Value	Product Attribute	Attribute Value
Manufacturer	Analog Devices, Inc.	Package	Tape & Reel (TR)
Voltage - Output (Min/Fixed)	0.8V	Output Type	Programmable
Voltage - Output (Max)	5V	Output Configuration	Positive
Voltage - Input (Min)	2.15V	Operating Temperature	-40°C ~ 125°C (TJ)
Voltage - Input (Max)	6.5V	Number of Outputs	1
Topology	Buck	Mounting Type	Surface Mount
Synchronous Rectifier	Yes	Function	Step-Down
Supplier Device Package	10-LFCSP-WD (3x3)	Frequency - Switching	2MHz
Series	-	Current - Output	50mA, 500mA
Package / Case	10-VDFN Exposed Pad, CSP	Base Product Number	ADP5300

Parts with Similar Specifications

The three parts on the right have similar specifications to Analog Devices Inc. ADP5300ACPZ-2-R7

Product Attribute				
Part Number	ADP5300ACPZ-2-R7	ADP5135ACPZ-R7	ADP5302ACPZ-1-R7	ADP5301ACBZ-1-R7
Manufacturer	Analog Devices Inc.	Analog Devices Inc.	Analog Devices Inc.	Analog Devices Inc.
Voltage - Input (Min)	2.15V	3V	2.15V	2.15V
Base Product Number	ADP5300	ADP5135	ADP5302	ADP5301
Operating Temperature	-40°C ~ 125°C (TJ)	-40°C ~ 125°C (TJ)	-40°C ~ 125°C (TJ)	-40°C ~ 125°C (TJ)
Supplier Device Package	10-LFCSP-WD (3x3)	24-LFCSP (4x4)	10-LFCSP-WD (3x3)	9-WLCSP (1.87x1.65)
Current - Output	50mA, 500mA	1.8A	50mA, 500mA	50mA, 500mA
Synchronous Rectifier	Yes	Yes	Yes	Yes
Voltage - Output (Max)	5V	3.8V	5V	5V
Number of Outputs	1	3	1	1
Mounting Type	Surface Mount	Surface Mount	Surface Mount	Surface Mount
Voltage - Input (Max)	6.5V	5.5V	6.5V	6.5V
Topology	Buck	Buck	Buck	Buck
Output Type	Programmable	Adjustable	Programmable	Programmable
Package / Case	10-VDFN Exposed Pad, CSP	24-WFQFN Exposed Pad, CSP	10-VDFN Exposed Pad, CSP	9-WFBGA, WLCSP
Function	Step-Down	Step-Down	Step-Down	Step-Down
Voltage - Output (Min/Fixed)	0.8V	0.8V	0.8V	0.8V
Package	Tape & Reel (TR)	Tape & Reel (TR)	Tape & Reel (TR)	Tape & Reel (TR)
Series	-	-	-	-
Frequency - Switching	2MHz	3MHz	2MHz	2MHz
Output Configuration	Positive	Positive	Positive	Positive

ADP5300ACPZ-2-R7 Datasheet PDF

Download ADP5300ACPZ-2-R7 pdf datasheets and Analog Devices Inc. documentation for ADP5300ACPZ-2-R7 - Analog Devices Inc..

Datasheets

[Cylindrical Battery Holders.pdf](#)

Other Related Documents

[Tape and Reel Packaging.pdf](#)

PCN Design/Specification



Customers Also Interested in

Recommended Products

ADP51B63M05 PANASON	ADP5140 Panasonic Electronic Components SENSOR 14.5PSIG 0.12" 4.5V	ADP51B62M02 Panasonic	ADP5139WACPZ-4 ADI (Analog Devices, Inc.)	ADP5135ACPZ-R7 Analog Devices Inc. IC REG BCK ADJ 1.8A TRPL 24LFCSP	ADP5301ACB7-VXZ ADI (Analog Devices, Inc.)
ADP5301XCBZ-R7 ADI (Analog Devices, Inc.)	ADP5302ACPZ-1-R7 Analog Devices Inc. IC REG BUCK PROG 10LFCSP	ADP5301ACBZ-1-R7 Analog Devices Inc. IC REG BUCK PROG 9WLCSP	ADP51B61 Panasonic Electronic Components SENSOR 0.87PSIG 0.12" 5V	ADP5301ACBZ-2-R7 Analog Devices Inc. IC REG BUCK PROG 9WLCSP	ADP5350ACPZ-1-R7 Analog Devices Inc. IC BAT PWR MGT LI-ION 1C 32LFCSP
ADP5304ACPZ ADI (Analog Devices, Inc.)	ADP5310AREZN-3.3R7 Analog Devices Inc. IC REG BUCK ADJ/3.3V DL 16TSSOP	ADP51B63 Panasonic Electronic Components SENSOR 0.87PSIG 0.22" 4.5V	ADP5200S ADI (Analog Devices, Inc.)	ADP5300ACPZ-1-R7 Analog Devices Inc. IC REG BUCK PROG 10LFCSP	ADP5200W Intel

Shipment

Delivery Time

In-stock items can be shipped within 24 hours. Some parts will be arranged for delivery within 1-2 days from the date all items arrive at our warehouse. And Allelco ships order once a day at about 17:00, except Sunday. Once the goods are shipped, the estimated delivery time depends on the shipping methods and Delivery destination. The table below shows are the logistic time for some common countries.

Delivery Cost

- > Use your express account for shipment if you have one.
- > Use our account for the shipment. Refer to the table below for the approximate charges.
(Different time frame / countries / package size has different price.)

Delivery Method

- > Global Common Shipment by DHL / UPS / FedEx / TNT / EMS / SF we support.
- > Others more shipping ways, please get in touch with your customer manager.

Common Countries Logistic Time Reference		
Region	Country	Logistic Time(Day)
America	United States	5
	Brazil	7
Europe	Germany	5
	United Kingdom	4
	Italy	5
Oceania	Australia	6
	New Zealand	7
Asia	India	6
	Japan	7
Middle East	Israel	6

DHL & FedEx Shipment Charges Reference	
Shipment charges(KG)	Reference DHL(USD\$)
0.00kg-1.00kg	USD\$60.00
1.00kg-2.00kg	USD\$70.00
2.00kg-3.00kg	USD\$80.00

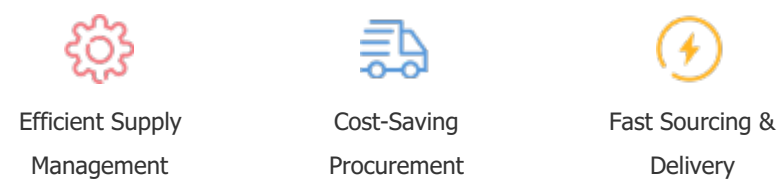
Note: The above table is for reference only. There may have some data bias for the uncontrollable factors.
Contact us if you have any questions.

Payment Support

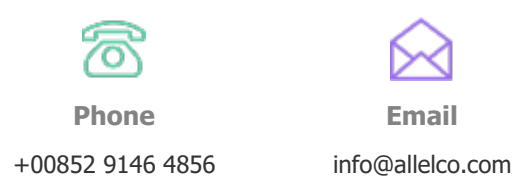
The payment method can be chosen from the methods shown below:
Wire Transfer (T/T, Bank Transfer), Western Union, Credit card,
PayPal.



Your Faithful Supply Chain Partner -



Contact us if you have any questions.



Certifications & Memberships



[View More](#)