



Image may be representation.  
See specifications for product details.



## MAX4373HESA+T

Manufacturer Part Number	<b>MAX4373HESA+T</b>
Manufacturer	<b>Maxim Integrated</b>
Allelco Part Number	32D-MAX4373HESA+T
ECAD Model	Request Free CAD Models
Parts Description	IC AMP COMP REF 8SOIC
Package	8-SOIC (0.154", 3.90mm Width)
Data sheet	<b>MAX4373/74/75.pdf</b>
RoHs Status	<b>ROHS3 Compliant</b>

**Get a Quote**

MAX4373HESA+T - Analog Devices Inc./Maxim Integrated.New Original in Stock. Download Linear Technology MAX4373HESA+T datasheet/specifications on AllelcoElec.com.  
Request a quote for MAX4373HESA+T, please send us email: [info@allelco.com](mailto:info@allelco.com)

### Specifications

MAX4373HESA+T Tech Specifications  
MAX4373HESA+T - Analog Devices Inc./Maxim Integrated technical specifications, attributes, parameters

Product Attribute	Attribute Value	Product Attribute	Attribute Value
Manufacturer	Maxim Integrated	Package	Tape & Reel (TR)
Type	Amplifier, Comparator, Reference	Mounting Type	Surface Mount
Supplier Device Package	8-SOIC	Base Product Number	MAX4373
Series	-	Applications	Current Sensing, Power Management
Package / Case	8-SOIC (0.154", 3.90mm Width)		

### Parts with Similar Specifications

The three parts on the right have similar specifications to Analog Devices Inc./Maxim Integrated MAX4373HESA+T

Product Attribute				
Part Number	MAX4373HESA+T	MAX4374FESD	MAX4373FESA+T	MAX4373FESA
Manufacturer	Analog Devices Inc./Maxim Integrated	Analog Devices Inc./Maxim Integrated	Analog Devices Inc./Maxim Integrated	Analog Devices Inc./Maxim Integrated
Package	Tape & Reel (TR)	Tube	Tape & Reel (TR)	Tube
Applications	Current Sensing, Power Management	Current Sensing, Power Management	Current Sensing, Power Management	Current Sensing, Power Management
Type	Amplifier, Comparator, Reference	Amplifier, Comparator, Reference	Amplifier, Comparator, Reference	Amplifier, Comparator, Reference
Package / Case	8-SOIC (0.154", 3.90mm Width)	14-SOIC (0.154", 3.90mm Width)	8-SOIC (0.154", 3.90mm Width)	8-SOIC (0.154", 3.90mm Width)
Supplier Device Package	8-SOIC	14-SOIC	8-SOIC	8-SOIC
Mounting Type	Surface Mount	Surface Mount	Surface Mount	Surface Mount
Series	-	-	-	-
Base Product Number	MAX4373	MAX4374	MAX4373	MAX4373

### MAX4373HESA+T Datasheet PDF

Download MAX4373HESA+T pdf datasheets and Analog Devices Inc./Maxim Integrated documentation for MAX4373HESA+T - Analog Devices Inc./Maxim Integrated.

#### Datasheets

[MAX4373/74/75.pdf](#)

#### Environmental Information

[Maxim Integrated REACH.pdf](#)

[Maxim Integrated RoHS Cert.pdf](#)

#### Part Numbering Guide

[Part Numbering System.pdf](#)

#### Application Notes

[DC Error Budget Calculator Simplifies Selection of.pdf](#)

[High-Side Current Amplifier Forms 28V Circuit Brea.pdf](#)

[How to Accurately Calculate Overcurrent in High-Si.pdf](#)

[Simple, Latched Overcurrent Fault Detector Has Fas.pdf](#)

### Customers Also Interested in

#### Recommended Products

<b>MAX4374FESD</b>	<b>MAX4372TEUK-T</b>	<b>MAX4373FESA+T</b>	<b>MAX4373FESA</b>		<b>MAX4372TEUUK-T</b>	<b>MAX4373HEUA+T</b>
Analog Devices Inc./Maxim Integrated	Analog Devices Inc./Maxim Integrated	Analog Devices Inc./Maxim Integrated	Analog Devices Inc./Maxim Integrated	Analog Devices / Maxim Integrated	Analog Devices Inc./Maxim Integrated	Analog Devices Inc./Maxim Integrated
IC AMP COMP REF 14SOIC	IC CURR SENSE 1 CIRCUIT SOT23-5	IC AMP COMP REF 8SOIC	IC AMP COMP REF 8SOIC		IC AMP COMP REF 8SOIC	IC AMP COMP REF 8UMAX

**MAX4373FEUA**Analog Devices Inc./Maxim Integrated  
IC AMP COMP REF 8UMAX**MAX4373TEUA+T**Analog Devices Inc./Maxim Integrated  
IC AMP COMP REF 8UMAX**MAX4373FESA+**Analog Devices Inc./Maxim Integrated  
IC AMP COMP REF 8SOIC**MAX4374FEUB**Analog Devices Inc./Maxim Integrated  
IC AMP COMP REF 10UMAX**MAX4374FEUB+**Analog Devices Inc./Maxim Integrated  
IC AMP COMP REF 10UMAX**MAX4373TEUA+**Analog Devices Inc./Maxim Integrated  
IC AMP COMP REF 8UMAX**MAX4373HEUA+**Analog Devices Inc./Maxim Integrated  
IC AMP COMP REF 8UMAX**MAX4373FEUA+T**Analog Devices Inc./Maxim Integrated  
IC AMP COMP REF 8UMAX**MAX4372TEUK+T**Analog Devices Inc./Maxim Integrated  
IC CURR SENSE 1 CIRCUIT SOT23-5**MAX4373TEUA**Analog Devices Inc./Maxim Integrated  
IC AMP COMP REF 8UMAX**MAX4373TESA+T**Analog Devices Inc./Maxim Integrated  
IC AMP COMP REF 8SOIC**MAX4373FEUA+**Analog Devices Inc./Maxim Integrated  
IC AMP COMP REF 8UMAX

## Shipment

### Delivery Time

In-stock items can be shipped within 24 hours. Some parts will be arranged for delivery within 1-2 days from the date all items arrive at our warehouse. And Allelco ships order once a day at about 17:00, except Sunday. Once the goods are shipped, the estimated delivery time depends on the shipping methods and Delivery destination. The table below shows are the logistic time for some common countries.

### Delivery Cost

> Use your express account for shipment if you have one.

> Use our account for the shipment. Refer to the table below for the approximate charges.

(Different time frame / countries / package size has different price.)

### Delivery Method

> Global Common Shipment by DHL / UPS / FedEx / TNT / EMS / SF we support.

> Others more shipping ways, please get in touch with your customer manager.

**Common Countries Logistic Time Reference**

Region	Country	Logistic Time(Day)
America	United States	5
	Brazil	7
Europe	Germany	5
	United Kingdom	4
	Italy	5
Oceania	Australia	6
	New Zealand	7
Asia	India	6
	Japan	7
Middle East	Israel	6

**DHL & FedEx Shipment Charges Reference**

Shipment charges(KG)	Reference DHL(USD\$)
0.00kg-1.00kg	USD\$60.00
1.00kg-2.00kg	USD\$70.00
2.00kg-3.00kg	USD\$80.00

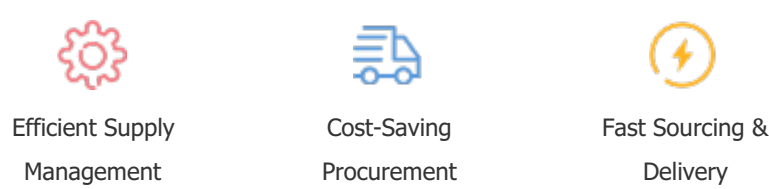
Note: The above table is for reference only. There may have some data bias for the uncontrollable factors.  
Contact us if you have any questions.

## Payment Support

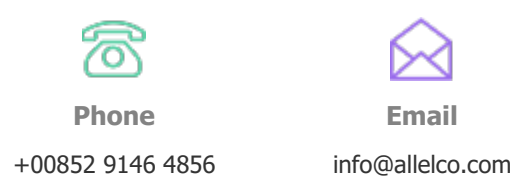
The payment method can be chosen from the methods shown below:  
Wire Transfer (T/T, Bank Transfer), Western Union, Credit card, PayPal.



## Your Faithful Supply Chain Partner -



Contact us if you have any questions.



## Certifications & Memberships



[View More](#)