

Image may be representation.  
See specifications for product details.



## ADG509FBRNZ-REEL7

Manufacturer Part Number	<b>ADG509FBRNZ-REEL7</b>
Manufacturer	<b>Analog Devices, Inc.</b>
Allelco Part Number	32D-ADG509FBRNZ-REEL7
ECAD Model	Request Free CAD Models
Parts Description	IC SWITCH SP4T X 2 2700HM 16SOIC
Package	16-SOIC (0.154", 3.90mm Width)
Data sheet	<b>ADG508F,509F.pdf</b>
RoHs Status	<b>ROHS3 Compliant</b>

**Get a Quote**

ADG509FBRNZ-REEL7 - Analog Devices Inc..New Original in Stock. Download Linear Technology ADG509FBRNZ-REEL7 datasheet/specifications on AllelcoElec.com. Request a quote for ADG509FBRNZ-REEL7, please send us email: [info@allelco.com](mailto:info@allelco.com)

### Specifications

ADG509FBRNZ-REEL7 Tech Specifications  
ADG509FBRNZ-REEL7 - Analog Devices Inc. technical specifications, attributes, parameters

Product Attribute	Attribute Value	Product Attribute	Attribute Value
Manufacturer	Analog Devices, Inc.	Number of Circuits	2
Voltage - Supply, Single (V+)	15V	Multiplexer/Demultiplexer Circuit	4:1
Voltage - Supply, Dual (V±)	±15V	Mounting Type	Surface Mount
Switch Time (Ton, Toff) (Max)	230ns, 130ns	Current - Leakage (IS(off)) (Max)	1nA
Switch Circuit	SP4T	Crosstalk	-
Supplier Device Package	16-SOIC	Charge Injection	15pC
Series	-	Channel-to-Channel Matching (ΔRon)	8.10hm
Package / Case	16-SOIC (0.154", 3.90mm Width)	Channel Capacitance (CS(off), CD(off))	3pF, 12pF
Package	Tape & Reel (TR)	Base Product Number	ADG509
Operating Temperature	-40°C ~ 85°C (TA)	-3db Bandwidth	-
On-State Resistance (Max)	2700hm (Typ)		

### Parts with Similar Specifications

The three parts on the right have similar specifications to Analog Devices Inc. ADG509FBRNZ-REEL7

Product Attribute				
Part Number	ADG509FBRNZ-REEL7	<b>ADG509ATQ/883B</b>	<b>ADG511ABR</b>	<b>ADG509FBRNZ</b>
Manufacturer	Analog Devices Inc.	Analog Devices Inc.	Analog Devices Inc.	Analog Devices Inc.
Charge Injection	15pC	4pC	-	15pC
Base Product Number	ADG509	ADG509	ADG511	ADG509
Series	-	-	LC <sup>2</sup> MOS	-
Channel Capacitance (CS(off), CD(off))	3pF, 12pF	5pF, 11pF	-	3pF, 12pF
-3db Bandwidth	-	-	-	-
Multiplexer/Demultiplexer Circuit	4:1	4:1	-	4:1
Operating Temperature	-40°C ~ 85°C (TA)	-55°C ~ 125°C	-	-40°C ~ 85°C (TA)
Switch Time (Ton, Toff) (Max)	230ns, 130ns	300ns, 300ns	-	230ns, 130ns
Current - Leakage (IS(off)) (Max)	1nA	1nA	-	1nA
Supplier Device Package	16-SOIC	16-CERDIP	16-SOIC	16-SOIC
Mounting Type	Surface Mount	Through Hole	Surface Mount	Surface Mount
Package / Case	16-SOIC (0.154", 3.90mm Width)	16-CDIP (0.300", 7.62mm)	16-SOIC (0.154", 3.90mm Width)	16-SOIC (0.154", 3.90mm Width)
On-State Resistance (Max)	2700hm (Typ)	4500hm	-	2700hm (Typ)
Switch Circuit	SP4T	SP4T	-	SP4T
Channel-to-Channel Matching (ΔRon)	8.10hm	22.50hm (Typ)	-	8.10hm
Voltage - Supply, Single (V+)	15V	10.8V ~ 16.5V	-	15V
Package	Tape & Reel (TR)	Tube	Tube	Tube
Number of Circuits	2	2	-	2
Voltage - Supply, Dual (V±)	±15V	±10.8V ~ 16.5V	-	±15V
Crosstalk	-	-	-	-

### ADG509FBRNZ-REEL7 Datasheet PDF

Download ADG509FBRNZ-REEL7 pdf datasheets and Analog Devices Inc. documentation for ADG509FBRNZ-REEL7 - Analog Devices Inc..

#### Datasheets

**ADG508F,509F.pdf**

#### Other Related Documents

**Tape and Reel Packaging.pdf**

**ADI Programmable Log Controller Solutions.pdf**



Alternate Assembly Site 06/Feb/2014.pdf

## Customers Also Interested in

### Recommended Products



**ADG509ATQ/883B**  
Analog Devices Inc.  
IC SWITCH SP4TX2 450OHM  
16CERDIP



**ADG509ATQ/883**  
ADI (Analog Devices, Inc.)



**ADG511ABR**  
Analog Devices Inc.  
IC SWITCH QUAD SPST 16SOIC



**ADG509FBRNZ**  
Analog Devices Inc.  
IC SWITCH SP4T X 2 270OHM  
16SOIC



**ADG509ATE/883B**  
ADI (Analog Devices, Inc.)



**ADG509FBNZ**  
Analog Devices Inc.  
IC MULTIPLEXER DUAL 4X1 16DIP



**ADG509ATQ**  
Analog Devices Inc.  
IC SWITCH SP4TX2 450OHM  
16CERDIP



**ADG511BRZ-REEL7**  
Analog Devices Inc.  
IC SWITCH SPST-NCX4 300HM  
16SOIC



**ADG509FBN**  
Analog Devices Inc.  
IC MULTIPLEXER DUAL 4X1 16DIP



**ADG509FBRWZ**  
Analog Devices Inc.  
IC SWITCH SP4T X 2 270OHM  
16SOIC



**ADG509FBRW**  
Analog Devices Inc.  
IC MULTIPLEXER DUAL 4X1 16SOIC



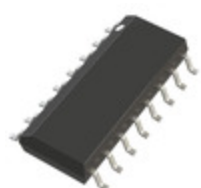
**ADG511BN**  
Analog Devices Inc.  
IC SWITCH SPST-NCX4 300HM  
16DIP



**ADG511BR-REEL7**  
Analog Devices Inc.  
IC SWITCH SPST-NCX4 300HM  
16SOIC



**ADG511BNZ**  
Analog Devices Inc.  
IC SWITCH SPST-NCX4 300HM  
16DIP



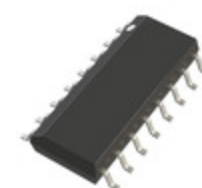
**ADG511ABRZ**  
Analog Devices Inc.  
IC SWITCH QUAD SPST 16SOIC



**ADG511BR**  
Analog Devices Inc.  
IC SWITCH SPST-NCX4 300HM  
16SOIC



**ADG509FBRN**  
Analog Devices Inc.  
IC SWITCH SP4T X 2 270OHM  
16SOIC



**ADG511BRZ**  
Analog Devices Inc.  
IC SWITCH SPST-NCX4 300HM  
16SOIC

## Shipment

### Delivery Time

In-stock items can be shipped within 24 hours. Some parts will be arranged for delivery within 1-2 days from the date all items arrive at our warehouse. And Allelco ships order once a day at about 17:00, except Sunday. Once the goods are shipped, the estimated delivery time depends on the shipping methods and Delivery destination. The table below shows are the logistic time for some common countries.

### Delivery Cost

- > Use your express account for shipment if you have one.
  - > Use our account for the shipment. Refer to the table below for the approximate charges.
- (Different time frame / countries / package size has different price.)

### Delivery Method

- > Global Common Shipment by DHL / UPS / FedEx / TNT / EMS / SF we support.
- > Others more shipping ways, please get in touch with your customer manager.

Common Countries Logistic Time Reference

Region	Country	Logistic Time(Day)
America	United States	5
	Brazil	7
Europe	Germany	5
	United Kingdom	4
	Italy	5
Oceania	Australia	6
	New Zealand	7
Asia	India	6
	Japan	7
Middle East	Israel	6

DHL & FedEx Shipment Charges Reference

Shipment charges(KG)	Reference DHL(USD\$)
0.00kg-1.00kg	USD\$60.00
1.00kg-2.00kg	USD\$70.00
2.00kg-3.00kg	USD\$80.00

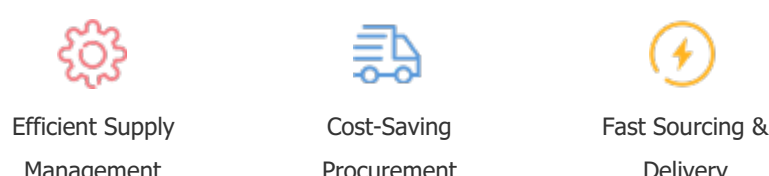
Note: The above table is for reference only. There may have some data bias for the uncontrollable factors.  
Contact us if you have any questions.

### Payment Support

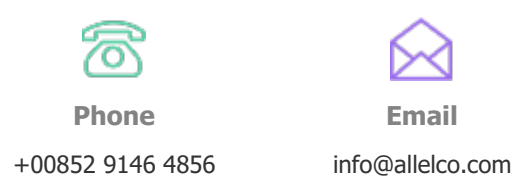
The payment method can be chosen from the methods shown below:  
Wire Transfer (T/T, Bank Transfer), Western Union, Credit card,  
PayPal.



### Your Faithful Supply Chain Partner -



Contact us if you have any questions.



### Certifications & Memberships



View More

### Contact us

Address: Flat/Rm C 13/F Harvard Commercial Building 105-111 Thomson Road, Wan Chai, Hong Kong  
Phone: +00852 9146 4856  
Fax: +00852 3010 8510  
Email: info@allelco.com