



Image may be representation.
See specifications for product details.



ADG1419BRMZ-REEL7

| | |
|--------------------------|----------------------------------------|
| Manufacturer Part Number | ADG1419BRMZ-REEL7 |
| Manufacturer | Analog Devices, Inc. |
| Allelco Part Number | 32D-ADG1419BRMZ-REEL7 |
| ECAD Model | PCB Symbol, Footprint & 3D Model |
| Parts Description | IC SWITCH SPDT X 1 2.4OHM 8MSOP |
| Package | 8-TSSOP, 8-MSOP (0.118", 3.00mm Width) |
| Data sheet | ADG1419.pdf |
| RoHs Status | ROHS3 Compliant |

Get a Quote

ADG1419BRMZ-REEL7 - Analog Devices Inc..New Original in Stock. Download Linear Technology ADG1419BRMZ-REEL7 datasheet/specifications on AllelcoElec.com. Request a quote for ADG1419BRMZ-REEL7, please send us email: info@allelco.com

Specifications

ADG1419BRMZ-REEL7 Tech Specifications
ADG1419BRMZ-REEL7 - Analog Devices Inc. technical specifications, attributes, parameters

| Product Attribute | Attribute Value | Product Attribute | Attribute Value |
|-------------------------------|----------------------------------------|----------------------------------------|-----------------|
| Manufacturer | Analog Devices, Inc. | Number of Circuits | 1 |
| Voltage - Supply, Single (V+) | 5V ~ 16.5V | Multiplexer/Demultiplexer Circuit | 2:1 |
| Voltage - Supply, Dual (V±) | ±4.5V ~ 16.5V | Mounting Type | Surface Mount |
| Switch Time (Ton, Toff) (Max) | 110ns, 140ns | Current - Leakage (IS(off)) (Max) | 500pA |
| Switch Circuit | SPDT | Crosstalk | -64dB @ 1MHz |
| Supplier Device Package | 8-MSOP | Charge Injection | -16pC |
| Series | - | Channel-to-Channel Matching (ΔRon) | 50mOhm |
| Package / Case | 8-TSSOP, 8-MSOP (0.118", 3.00mm Width) | Channel Capacitance (CS(off), CD(off)) | 19pF, 44pF |
| Package | Tape & Reel (TR) | Base Product Number | ADG1419 |
| Operating Temperature | -40°C ~ 125°C (TA) | -3db Bandwidth | 135MHz |
| On-State Resistance (Max) | 2.4Ohm | | |

Parts with Similar Specifications

The three parts on the right have similar specifications to Analog Devices Inc. ADG1419BRMZ-REEL7

| Product Attribute | | | | |
|----------------------------------------|----------------------------------------|---------------------------|--------------------------|------------------------------------------|
| Part Number | ADG1419BRMZ-REEL7 | ADG1422BCPZ-REEL7 | ADG1419BCPZ-REEL7 | ADG1421BRMZ-REEL7 |
| Manufacturer | Analog Devices Inc. | Analog Devices Inc. | Analog Devices Inc. | Analog Devices Inc. |
| Voltage - Supply, Single (V+) | 5V ~ 16.5V | 5V ~ 16.5V | 5V ~ 16.5V | 5V ~ 16.5V |
| Number of Circuits | 1 | 2 | 1 | 2 |
| -3db Bandwidth | 135MHz | 180MHz | 135MHz | 180MHz |
| Voltage - Supply, Dual (V±) | ±4.5V ~ 16.5V | ±4.5V ~ 16.5V | ±4.5V ~ 16.5V | ±4.5V ~ 16.5V |
| Package | Tape & Reel (TR) | Tape & Reel (TR) | Tape & Reel (TR) | Tape & Reel (TR) |
| Mounting Type | Surface Mount | Surface Mount | Surface Mount | Surface Mount |
| Channel-to-Channel Matching (ΔRon) | 50mOhm | 20mOhm | 50mOhm | 20mOhm |
| Current - Leakage (IS(off)) (Max) | 500pA | 500pA | 500pA | 500pA |
| Series | - | - | - | - |
| Switch Time (Ton, Toff) (Max) | 110ns, 140ns | 145ns, 145ns | 110ns, 140ns | 145ns, 145ns |
| Supplier Device Package | 8-MSOP | 10-LFCSP-WD (3x3) | 8-LFCSP-WD (2x3) | 10-MSOP |
| Crosstalk | -64dB @ 1MHz | -74dB @ 1MHz | -64dB @ 1MHz | -74dB @ 1MHz |
| Multiplexer/Demultiplexer Circuit | 2:1 | 1:1 | 2:1 | 1:1 |
| Base Product Number | ADG1419 | ADG1422 | ADG1419 | ADG1421 |
| On-State Resistance (Max) | 2.4Ohm | 2.4Ohm | 2.4Ohm | 2.4Ohm |
| Package / Case | 8-TSSOP, 8-MSOP (0.118", 3.00mm Width) | 10-VDFDN Exposed Pad, CSP | 8-WDFDN Exposed Pad, CSP | 10-TFSOP, 10-MSOP (0.118", 3.00mm Width) |
| Operating Temperature | -40°C ~ 125°C (TA) | -40°C ~ 125°C (TA) | -40°C ~ 125°C (TA) | -40°C ~ 125°C (TA) |
| Channel Capacitance (CS(off), CD(off)) | 19pF, 44pF | 18pF, 22pF | 19pF, 44pF | 18pF, 22pF |
| Charge Injection | -16pC | -5pC | -16pC | -5pC |
| Switch Circuit | SPDT | SPST - NC | SPDT | SPST - NO |

ADG1419BRMZ-REEL7 Datasheet PDF

Download ADG1419BRMZ-REEL7 pdf datasheets and Analog Devices Inc. documentation for ADG1419BRMZ-REEL7 - Analog Devices Inc..

Datasheets

[ADG1419.pdf](#)

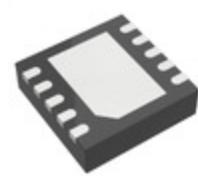
Other Related Documents

[Tape and Reel Packaging.pdf](#)

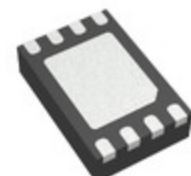
 Alternate Site 22/Mar/2021.pdf

Customers Also Interested in

Recommended Products



ADG1422BCPZ-REEL7
Analog Devices Inc.
IC SW SPST-NCX2 2.4OHM 10LFCSP



ADG1419BCPZ-REEL7
Analog Devices Inc.
IC SWITCH SPDT X 1 2.4OHM 8LFCSP



ADG1419BCPZ
ADI (Analog Devices, Inc.)



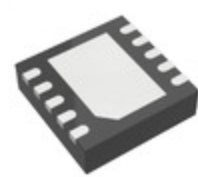
ADG1414BCPZ
ADI (Analog Devices, Inc.)



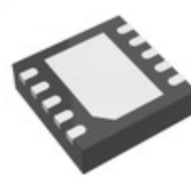
ADG1421BRMZ-REEL7
Analog Devices Inc.
IC SW SPST-NOX2 2.4OHM 10MSOP



ADG1421BRMZ
ADI (Analog Devices, Inc.)



ADG1423BCPZ-REEL7
Analog Devices Inc.
IC SW SPST-NO/NCX2 2.4OHM 10CSP



ADG1421BCPZ-REEL7
Analog Devices Inc.
IC SW SPST-NOX2 2.4OHM 10LFCSP



ADG1414BRUZ
Analog Devices Inc.
IC SW SPST-NOX8 11.5OHM 24TSSOP



ADG1419BCPZ-REEL
ADI (Analog Devices, Inc.)



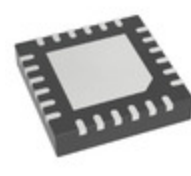
ADG1419BRMZ
Analog Devices Inc.
IC SWITCH SPDT X 1 2.4OHM 8MSOP



ADG1422BRMZ
Analog Devices Inc.
IC SW SPST-NCX2 2.4OHM 10MSOP



ADG1421BRMZ
Analog Devices Inc.
IC SW SPST-NOX2 2.4OHM 10MSOP



ADG1414BCPZ-REEL7
Analog Devices Inc.
IC SW SPST-NOX8 11.5OHM 24LFCSP



ADG1422BRMZ-REEL7
Analog Devices Inc.
IC SW SPST-NCX2 2.4OHM 10MSOP



ADG1414BRUZ-REEL7
Analog Devices Inc.
IC SW SPST-NOX8 11.5OHM 24TSSOP



ADG1413YRUZ-REEL7
Analog Devices Inc.
IC SW SPST-NO/NC 1.8OHM 16TSSOP



ADG1422BCPZ
ADI (Analog Devices, Inc.)

Shipment

Delivery Time

In-stock items can be shipped within 24 hours. Some parts will be arranged for delivery within 1-2 days from the date all items arrive at our warehouse. And Allelco ships order once a day at about 17:00, except Sunday. Once the goods are shipped, the estimated delivery time depends on the shipping methods and Delivery destination. The table below shows are the logistic time for some common countries.

Delivery Cost

- > Use your express account for shipment if you have one.
 - > Use our account for the shipment. Refer to the table below for the approximate charges.
- (Different time frame / countries / package size has different price.)

Delivery Method

- > Global Common Shipment by DHL / UPS / FedEx / TNT / EMS / SF we support.
- > Others more shipping ways, please get in touch with your customer manager.

Common Countries Logistic Time Reference

| Region | Country | Logistic Time(Day) |
|-------------|----------------|--------------------|
| America | United States | 5 |
| | Brazil | 7 |
| Europe | Germany | 5 |
| | United Kingdom | 4 |
| | Italy | 5 |
| Oceania | Australia | 6 |
| | New Zealand | 7 |
| Asia | India | 6 |
| | Japan | 7 |
| Middle East | Israel | 6 |

DHL & FedEx Shipment Charges Reference

| Shipment charges(KG) | Reference DHL(USD\$) |
|----------------------|----------------------|
| 0.00kg-1.00kg | USD\$60.00 |
| 1.00kg-2.00kg | USD\$70.00 |
| 2.00kg-3.00kg | USD\$80.00 |

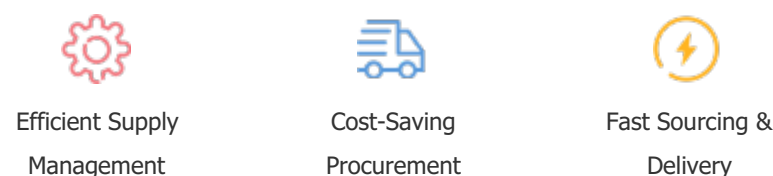
Note: The above table is for reference only. There may have some data bias for the uncontrollable factors. Contact us if you have any questions.

Payment Support

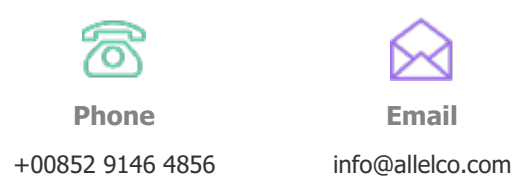
The payment method can be chosen from the methods shown below:
Wire Transfer (T/T, Bank Transfer), Western Union, Credit card, PayPal.



Your Faithful Supply Chain Partner -



Contact us if you have any questions.



Certifications & Memberships



View More

Contact us

Address: Flat/Rm C 13/F Harvard Commercial Building 105-111 Thomson Road, Wan Chai, Hong Kong
Phone: +00852 9146 4856
Fax: +00852 3010 8510
Email: info@Allelco.com