

Image may be representation.
See specifications for product details.



MAX4611ESD

Manufacturer Part Number	MAX4611ESD
Manufacturer	Maxim Integrated
Allelco Part Number	32D-MAX4611ESD
ECAD Model	Request Free CAD Models
Parts Description	IC SW SPST-NCX4 100OHM 14SOIC
Package	14-SOIC (0.154", 3.90mm Width)
Data sheet	MAX4610-12.pdf

Get a Quote

MAX4611ESD - Analog Devices Inc./Maxim Integrated.New Original in Stock. Download Linear Technology MAX4611ESD datasheet/specifications on AllelcoElec.com.
Request a quote for MAX4611ESD, please send us email: info@allelco.com

Specifications

MAX4611ESD Tech Specifications
MAX4611ESD - Analog Devices Inc./Maxim Integrated technical specifications, attributes, parameters

Product Attribute	Attribute Value	Product Attribute	Attribute Value
Manufacturer	Maxim Integrated	Number of Circuits	4
Voltage - Supply, Single (V+)	2V ~ 12V	Multiplexer/Demultiplexer Circuit	1:1
Voltage - Supply, Dual (V±)	-	Mounting Type	Surface Mount
Switch Time (Ton, Toff) (Max)	65ns, 28ns	Current - Leakage (IS(off)) (Max)	100pA
Switch Circuit	SPST - NC	Crosstalk	-80dB @ 1MHz
Supplier Device Package	14-SOIC	Charge Injection	1pC
Series	-	Channel-to-Channel Matching (ΔRon)	10hm
Package / Case	14-SOIC (0.154", 3.90mm Width)	Channel Capacitance (CS(off), CD(off))	16pF, 16pF
Package	Tube	Base Product Number	MAX4611
Operating Temperature	-40°C ~ 85°C (TA)	-3db Bandwidth	300MHz
On-State Resistance (Max)	1000hm		

Parts with Similar Specifications

The three parts on the right have similar specifications to Analog Devices Inc./Maxim Integrated MAX4611ESD

Product Attribute				
Part Number	MAX4611ESD	MAX4610CUD	MAX4611EPD	MAX4612CPD+
Manufacturer	Analog Devices Inc./Maxim Integrated	Analog Devices Inc./Maxim Integrated	Analog Devices Inc./Maxim Integrated	Analog Devices Inc./Maxim Integrated
On-State Resistance (Max)	1000hm	1000hm	1000hm	1000hm
Supplier Device Package	14-SOIC	14-TSSOP	14-PDIP	14-PDIP
Package	Tube	Tube	Tube	Tube
Current - Leakage (IS(off)) (Max)	100pA	100pA	100pA	100pA
Switch Circuit	SPST - NC	SPST - NO	SPST - NC	SPST - NO/NC
Crosstalk	-80dB @ 1MHz	-80dB @ 1MHz	-80dB @ 1MHz	-80dB @ 1MHz
Multiplexer/Demultiplexer Circuit	1:1	1:1	1:1	1:1
Mounting Type	Surface Mount	Surface Mount	Through Hole	Through Hole
Number of Circuits	4	4	4	4
Channel Capacitance (CS(off), CD(off))	16pF, 16pF	16pF, 16pF	16pF, 16pF	16pF, 16pF
Base Product Number	MAX4611	MAX4610	MAX4611	MAX4612
Series	-	-	-	-
-3db Bandwidth	300MHz	300MHz	300MHz	300MHz
Switch Time (Ton, Toff) (Max)	65ns, 28ns	65ns, 28ns	65ns, 28ns	65ns, 28ns
Charge Injection	1pC	1pC	1pC	1pC
Operating Temperature	-40°C ~ 85°C (TA)	0°C ~ 70°C (TA)	-40°C ~ 85°C (TA)	0°C ~ 70°C (TA)
Package / Case	14-SOIC (0.154", 3.90mm Width)	14-TSSOP (0.173", 4.40mm Width)	14-DIP (0.300", 7.62mm)	14-DIP (0.300", 7.62mm)
Voltage - Supply, Dual (V±)	-	-	-	-
Voltage - Supply, Single (V+)	2V ~ 12V	2V ~ 12V	2V ~ 12V	2V ~ 12V
Channel-to-Channel Matching (ΔRon)	10hm	10hm	10hm	10hm

MAX4611ESD Datasheet PDF

Download MAX4611ESD pdf datasheets and Analog Devices Inc./Maxim Integrated documentation for MAX4611ESD - Analog Devices Inc./Maxim Integrated.

Datasheets


[MAX4610-12.pdf](#)

Environmental Information

[Maxim Integrated RoHS Cert.pdf](#)

[Red Phosphorous Certificate.pdf](#)

Part Numbering Guide

 Part Numbering System.pdf

PCN Obsolescence/ EOL

 Cylindrical Battery Holders.pdf

Customers Also Interested in

Recommended Products



MAX4610CUD

Analog Devices Inc./Maxim Integrated
IC SW SPST-NOX4 100OHM 14TSSOP



MAX4611EPD

Analog Devices Inc./Maxim Integrated
IC SWITCH SPST-NCX4 100OHM 14DIP



MAX4612CPD+

Analog Devices Inc./Maxim Integrated
IC SW SPST-NO/NCX4 100OHM 14DIP



MAX4610EUD+T

Analog Devices Inc./Maxim Integrated
IC SW SPST-NOX4 100OHM 14TSSOP



MAX4610CUD+T

Analog Devices Inc./Maxim Integrated
IC SW SPST-NOX4 100OHM 14TSSOP



MAX4610EUD

Analog Devices Inc./Maxim Integrated
IC SW SPST-NOX4 100OHM 14TSSOP



MAX4610ESD

Analog Devices Inc./Maxim Integrated
IC SW SPST-NOX4 100OHM 14SOIC



MAX4612CSD+T

Analog Devices Inc./Maxim Integrated
IC SW SPST-NO/NCX4 100OHM 14SOIC



MAX4612EUD

Analog Devices Inc./Maxim Integrated
IC SW SPST-NO/NC 100OHM 14TSSOP



MAX4610CUD+

Analog Devices Inc./Maxim Integrated
IC SW SPST-NOX4 100OHM 14TSSOP



MAX4611CSD

Analog Devices Inc./Maxim Integrated
IC SW SPST-NCX4 100OHM 14SOIC



MAX4610EPD

Analog Devices Inc./Maxim Integrated
IC SWITCH SPST-NOX4 100OHM 14DIP



MAX4612ESD+T

Analog Devices Inc./Maxim Integrated
IC SW SPST-NO/NCX4 100OHM 14SOIC



MAX4611ESD+

Analog Devices Inc./Maxim Integrated
IC SW SPST-NCX4 100OHM 14SOIC



MAX4612EUD+T

Analog Devices Inc./Maxim Integrated
IC SW SPST-NO/NC 100OHM 14TSSOP



MAX4613CSE+T

Analog Devices Inc./Maxim Integrated
IC SW SPST-NO/NCX4 700HM 16SOIC



MAX4612EUD+

Analog Devices Inc./Maxim Integrated
IC SW SPST-NO/NC 100OHM 14TSSOP



MAX4612CSD

Analog Devices Inc./Maxim Integrated
IC SW SPST-NO/NCX4 100OHM 14SOIC

Shipment

Delivery Time

In-stock items can be shipped within 24 hours. Some parts will be arranged for delivery within 1-2 days from the date all items arrive at our warehouse. And Allelco ships order once a day at about 17:00, except Sunday. Once the goods are shipped, the estimated delivery time depends on the shipping methods and Delivery destination. The table below shows are the logistic time for some common countries.

Delivery Cost

- > Use your express account for shipment if you have one.
 - > Use our account for the shipment. Refer to the table below for the approximate charges.
- (Different time frame / countries / package size has different price.)

Delivery Method

- > Global Common Shipment by DHL / UPS / FedEx / TNT / EMS / SF we support.
- > Others more shipping ways, please get in touch with your customer manager.

Common Countries Logistic Time Reference

Region	Country	Logistic Time(Day)
America	United States	5
	Brazil	7
Europe	Germany	5
	United Kingdom	4
	Italy	5
Oceania	Australia	6
	New Zealand	7
Asia	India	6
	Japan	7
Middle East	Israel	6

DHL & FedEx Shipment Charges Reference

Shipment charges(KG)	Reference DHL(USD\$)
0.00kg-1.00kg	USD\$60.00
1.00kg-2.00kg	USD\$70.00
2.00kg-3.00kg	USD\$80.00

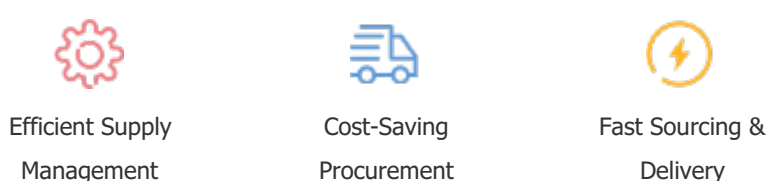
Note: The above table is for reference only. There may have some data bias for the uncontrollable factors. Contact us if you have any questions.

Payment Support

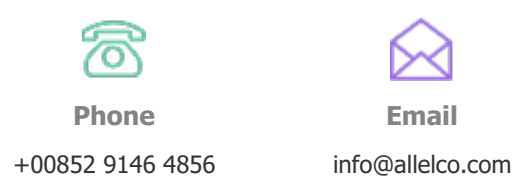
The payment method can be chosen from the methods shown below:
Wire Transfer (T/T, Bank Transfer), Western Union, Credit card, PayPal.



Your Faithful Supply Chain Partner -



Contact us if you have any questions.



Certifications & Memberships



View More

