

Image may be representation.
See specifications for product details.



ES1D-E3/61T

Manufacturer Part Number	ES1D-E3/61T
Manufacturer	Vishay General Semiconductor – Diodes Division
Allelco Part Number	32D-ES1D-E3/61T
ECAD Model	PCB Symbol, Footprint & 3D Model
Parts Description	DIODE GEN PURP 200V 1A DO214AC
Package	DO-214AC, SMA
Data sheet	ES1A thru ES1D.pdf
RoHs Status	ROHS3 Compliant

[Get a Quote](#)

ES1D-E3/61T - Vishay General Semiconductor - Diodes Division. New Original in Stock. Download Linear Technology ES1D-E3/61T datasheet/specifications on AllelcoElec.com.
Request a quote for ES1D-E3/61T, please send us email: info@allelco.com

Specifications

ES1D-E3/61T Tech Specifications

ES1D-E3/61T - Vishay General Semiconductor - Diodes Division technical specifications, attributes, parameters

Product Attribute	Attribute Value	Product Attribute	Attribute Value
Manufacturer	Vishay General Semiconductor – Diodes Division	Package / Case	DO-214AC, SMA
Voltage - Forward (Vf) (Max) @ If	920 mV @ 1 A	Package	Tape & Reel (TR)
Voltage - DC Reverse (Vr) (Max)	200 V	Operating Temperature - Junction	-55°C ~ 150°C
Technology	Standard	Mounting Type	Surface Mount
Supplier Device Package	DO-214AC (SMA)	Current - Reverse Leakage @ Vr	5 µA @ 200 V
Speed	Fast Recovery =< 500ns, > 200mA (Io)	Current - Average Rectified (Io)	1A
Series	-	Capacitance @ Vr, F	10pF @ 4V, 1MHz
Reverse Recovery Time (trr)	25 ns	Base Product Number	ES1

Parts with Similar Specifications

The three parts on the right have similar specifications to Vishay General Semiconductor - Diodes Division ES1D-E3/61T

Product Attribute				
Part Number	ES1D-E3/61T	ES1D-HF	ES1D-13-F	ES1D-M3/61T
Manufacturer	Vishay General Semiconductor - Diodes Division	Comchip Technology	Diodes Incorporated	Vishay General Semiconductor - Diodes Division
Operating Temperature - Junction	-55°C ~ 150°C	-55°C ~ 150°C	-55°C ~ 150°C	-55°C ~ 150°C
Capacitance @ Vr, F	10pF @ 4V, 1MHz	15pF @ 4V, 1MHz	20pF @ 4V, 1MHz	10pF @ 4V, 1MHz
Speed	Fast Recovery =< 500ns, > 200mA (Io)	Fast Recovery =< 500ns, > 200mA (Io)	Fast Recovery =< 500ns, > 200mA (Io)	Fast Recovery =< 500ns, > 200mA (Io)
Technology	Standard	Standard	Standard	Standard
Current - Reverse Leakage @ Vr	5 µA @ 200 V	5 µA @ 200 V	5 µA @ 200 V	5 µA @ 200 V
Package	Tape & Reel (TR)	Tape & Reel (TR)	Tape & Reel (TR)	Tape & Reel (TR)
Series	-	-	-	-
Mounting Type	Surface Mount	Surface Mount	Surface Mount	Surface Mount
Voltage - Forward (Vf) (Max) @ If	920 mV @ 1 A	1 V @ 1 A	920 mV @ 1 A	920 mV @ 1 A
Voltage - DC Reverse (Vr) (Max)	200 V	200 V	200 V	200 V
Reverse Recovery Time (trr)	25 ns	35 ns	25 ns	25 ns
Package / Case	DO-214AC, SMA	DO-214AC, SMA	DO-214AC, SMA	DO-214AC, SMA
Base Product Number	ES1	ES1D	ES1D	ES1
Current - Average Rectified (Io)	1A	1A	1A	1A
Supplier Device Package	DO-214AC (SMA)	DO-214AC (SMA)	SMA	DO-214AC (SMA)

ES1D-E3/61T Datasheet PDF

Download ES1D-E3/61T pdf datasheets and Vishay General Semiconductor - Diodes Division documentation for ES1D-E3/61T - Vishay General Semiconductor - Diodes Division.

Datasheets

[ES1A thru ES1D.pdf](#)

PCN Assembly/Origin

[Multiple Parts 21/Jun/2022.pdf](#)

Customers Also Interested in

Recommended Products



ES1D-0-T4-G
CYSTECH



ES1D-HF
Comchip Technology
DIODE GEN PURP 200V 1A DO214AC



ES1D-13-F
Diodes Incorporated
DIODE GEN PURP 200V 1A SMA



ES1D-F
LITEON



ES1D-NL
Electro-Films (EFI) / Vishay

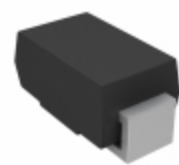


ES1D-R2-00001
PANIT



ES1D-AU

PANJIT



ES1D-M3/61T

Vishay General Semiconductor - Diodes Division
DIODE GEN PURP 200V 1A DO214AC



ES1D-09

Fairchild (onsemi)



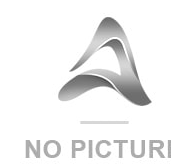
ES1D-E3/61T/ES1D

FAIRCHILD/VISHAY/XX



ES1D-E3

Electro-Films (EFI) / Vishay



ES1D-E3/61T ES1D

LEIDITECH



ES1D T/R

PANJIT



ES1D-E3/61

Electro-Films (EFI) / Vishay



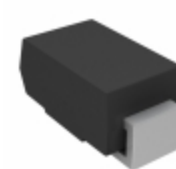
ES1D-LTP

Micro Commercial Co
DIODE GEN PURP 200V 1A DO214AC



ES1D-E-47L-2

GULF



ES1D-E3/5AT

Vishay General Semiconductor - Diodes Division
DIODE GEN PURP 200V 1A DO214AC



ES1D-E3Z/H

Electro-Films (EFI) / Vishay

Shipment

Delivery Time

In-stock items can be shipped within 24 hours. Some parts will be arranged for delivery within 1-2 days from the date all items arrive at our warehouse. And Allelco ships order once a day at about 17:00, except Sunday. Once the goods are shipped, the estimated delivery time depends on the shipping methods and Delivery destination. The table below shows are the logistic time for some common countries.

Delivery Cost

> Use your express account for shipment if you have one.

> Use our account for the shipment. Refer to the table below for the approximate charges.

(Different time frame / countries / package size has different price.)

Delivery Method

> Global Common Shipment by DHL / UPS / FedEx / TNT / EMS / SF we support.

> Others more shipping ways, please get in touch with your customer manager.

Common Countries Logistic Time Reference

Region	Country	Logistic Time(Day)
America	United States	5
	Brazil	7
Europe	Germany	5
	United Kingdom	4
	Italy	5
Oceania	Australia	6
	New Zealand	7
Asia	India	6
	Japan	7
Middle East	Israel	6

DHL & FedEx Shipment Charges Reference

Shipment charges(KG)	Reference DHL(USD\$)
0.00kg-1.00kg	USD\$60.00
1.00kg-2.00kg	USD\$70.00
2.00kg-3.00kg	USD\$80.00

Note: The above table is for reference only. There may have some data bias for the uncontrollable factors.

Contact us if you have any questions.

Payment Support

The payment method can be chosen from the methods shown below:

Wire Transfer (T/T, Bank Transfer), Western Union, Credit card, PayPal.



Your Faithful Supply Chain Partner -



Efficient Supply Management



Cost-Saving Procurement



Fast Sourcing & Delivery

Contact us if you have any questions.



Phone

+00852 9146 4856



Email

info@allelco.com

Certifications & Memberships



[View More](#)



Contact us

Address: Flat/Rm C 13/F Harvard Commercial Building 105-111 Thomson Road, Wan Chai, Hong Kong

Phone: +00852 9146 4856

Fax: +00852 3010 8510

Email: info@allelco.com

Copyright © 2012-2023 AllelcoElec.com. All rights reserved.