

Image may be representation.
See specifications for product details.



AD7891ASZ-2

| | |
|--------------------------|----------------------------------|
| Manufacturer Part Number | AD7891ASZ-2 |
| Manufacturer | Analog Devices, Inc. |
| Allelco Part Number | 32D-AD7891ASZ-2 |
| ECAD Model | PCB Symbol, Footprint & 3D Model |
| Parts Description | IC DAS 12BIT 500K 44MQFP |
| Package | 44-QFP |
| Data sheet | AD7891.pdf |
| RoHs Status | ROHS3 Compliant |

Get a Quote

AD7891ASZ-2 - Analog Devices Inc..New Original in Stock. Download Linear Technology AD7891ASZ-2 datasheet/specifications on AllelcoElec.com.
Request a quote for AD7891ASZ-2, please send us email: info@allelco.com

Specifications

AD7891ASZ-2 Tech Specifications
AD7891ASZ-2 - Analog Devices Inc. technical specifications, attributes, parameters

| Product Attribute | Attribute Value | Product Attribute | Attribute Value |
|----------------------------|-------------------------------|-----------------------|------------------|
| Manufacturer | Analog Devices, Inc. | Package / Case | 44-QFP |
| Voltage Supply Source | Single Supply | Package | Tray |
| Voltage - Supply | 5V | Operating Temperature | -40°C ~ 85°C |
| Type | Data Acquisition System (DAS) | Number of Channels | 8 |
| Supplier Device Package | 44-MQFP (10x10) | Mounting Type | Surface Mount |
| Series | - | Data Interface | Serial, Parallel |
| Sampling Rate (Per Second) | 500k | Base Product Number | AD7891 |
| Resolution (Bits) | 12 b | | |

Parts with Similar Specifications

The three parts on the right have similar specifications to Analog Devices Inc. AD7891ASZ-2

| Product Attribute | | | | |
|----------------------------|-------------------------------|-------------------------------|-------------------------------|-------------------------------|
| Part Number | AD7891ASZ-2 | AD7890SQ-10 | AD7891APZ-1 | AD7890SQ-4 |
| Manufacturer | Analog Devices Inc. | Analog Devices Inc. | Analog Devices Inc. | Analog Devices Inc. |
| Voltage Supply Source | Single Supply | Single Supply | Single Supply | Single Supply |
| Number of Channels | 8 | 8 | 8 | 8 |
| Series | - | - | - | - |
| Type | Data Acquisition System (DAS) | Data Acquisition System (DAS) | Data Acquisition System (DAS) | Data Acquisition System (DAS) |
| Data Interface | Serial, Parallel | Serial | Serial, Parallel | Serial |
| Resolution (Bits) | 12 b | 12 b | 12 b | 12 b |
| Package | Tray | Tube | Tube | Tube |
| Supplier Device Package | 44-MQFP (10x10) | 24-CDIP | 44-PLCC (16.59x16.59) | 24-CDIP |
| Package / Case | 44-QFP | 24-CDIP (0.300", 7.62mm) | 44-LCC (J-Lead) | 24-CDIP (0.300", 7.62mm) |
| Operating Temperature | -40°C ~ 85°C | -55°C ~ 125°C | -40°C ~ 85°C | -55°C ~ 125°C |
| Base Product Number | AD7891 | AD7890 | AD7891 | AD7890 |
| Voltage - Supply | 5V | 5V | 5V | 5V |
| Mounting Type | Surface Mount | Through Hole | Surface Mount | Through Hole |
| Sampling Rate (Per Second) | 500k | 117k | 500k | 117k |

AD7891ASZ-2 Datasheet PDF

Download AD7891ASZ-2 pdf datasheets and Analog Devices Inc. documentation for AD7891ASZ-2 - Analog Devices Inc..

Datasheets

[AD7891.pdf](#)

PCN Assembly/Origin

[Assembly Relocation Rev 08/Aug/2016.pdf](#)

Customers Also Interested in

Recommended Products



AD7890SQ-10
Analog Devices Inc.
IC DAS 12BIT 117K 24CDIP



AD7891APZ-1
Analog Devices Inc.
IC DAS 12BIT 500K 44PLCC



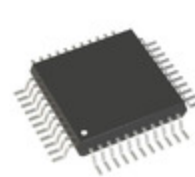
AD7891AS1
ADI (Analog Devices, Inc.)



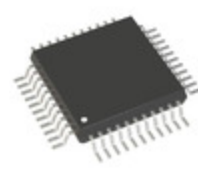
AD7890SQ-4
Analog Devices Inc.
IC DAS 12BIT 117K 24CDIP



AD7891AP-2
Analog Devices Inc.
IC DAS 12BIT 500K 44PLCC



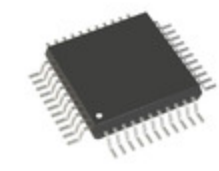
AD7891YSZ-1
Analog Devices Inc.
IC DAS 12BIT 500K 44MQFP

**AD7891AP-1**Analog Devices Inc.
IC DAS 12BIT 500K 44PLCC**AD7891AS-1**Analog Devices Inc.
IC DAS 12BIT 8CH HI-SPD 44-MQFP**AD7891BSZ-1**Analog Devices Inc.
IC DAS 12BIT 500K 44MQFP**AD7891BSZ-2**Analog Devices Inc.
IC DAS 12BIT 500K 44MQFP**AD7891YP-1**Analog Devices Inc.
IC DAS 12BIT 8CH 44-PLCC**AD7891AS-2**

ADI (Analog Devices, Inc.)

**AD7891BP-1**Analog Devices Inc.
IC DAS 12BIT 500K 44PLCC**AD7891AS-1.**

ADI (Analog Devices, Inc.)

**AD7891YPZ-1**Analog Devices Inc.
IC DAS 12BIT 500K 44PLCC**AD7891BPZ-1**Analog Devices Inc.
IC DAS 12BIT 500K 44PLCC**AD7891ASZ-1**Analog Devices Inc.
IC DAS 12BIT 500K 44MQFP**AD7891ASZ-2REEL**Analog Devices Inc.
IC DAS 12BIT 500K 44MQFP

Shipment

Delivery Time

In-stock items can be shipped within 24 hours. Some parts will be arranged for delivery within 1-2 days from the date all items arrive at our warehouse. And Allelco ships order once a day at about 17:00, except Sunday. Once the goods are shipped, the estimated delivery time depends on the shipping methods and Delivery destination. The table below shows are the logistic time for some common countries.

Delivery Cost

> Use your express account for shipment if you have one.

> Use our account for the shipment. Refer to the table below for the approximate charges.

(Different time frame / countries / package size has different price.)

Delivery Method

> Global Common Shipment by DHL / UPS / FedEx / TNT / EMS / SF we support.

> Others more shipping ways, please get in touch with your customer manager.

| Common Countries Logistic Time Reference | | |
|--|----------------|--------------------|
| Region | Country | Logistic Time(Day) |
| America | United States | 5 |
| | Brazil | 7 |
| Europe | Germany | 5 |
| | United Kingdom | 4 |
| | Italy | 5 |
| Oceania | Australia | 6 |
| | New Zealand | 7 |
| Asia | India | 6 |
| | Japan | 7 |
| Middle East | Israel | 6 |

| DHL & FedEx Shipment Charges Reference | |
|--|----------------------|
| Shipment charges(KG) | Reference DHL(USD\$) |
| 0.00kg-1.00kg | USD\$60.00 |
| 1.00kg-2.00kg | USD\$70.00 |
| 2.00kg-3.00kg | USD\$80.00 |

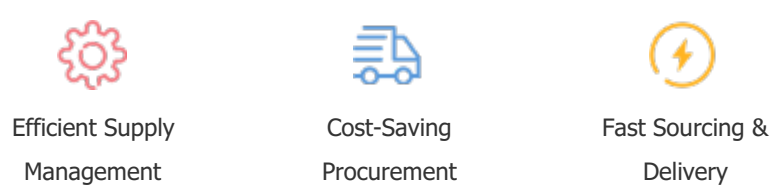
Note: The above table is for reference only. There may have some data bias for the uncontrollable factors.
Contact us if you have any questions.

Payment Support

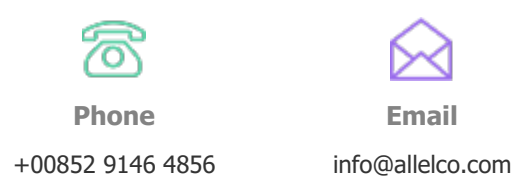
The payment method can be chosen from the methods shown below:
Wire Transfer (T/T, Bank Transfer), Western Union, Credit card, PayPal.



Your Faithful Supply Chain Partner -



Contact us if you have any questions.



Certifications & Memberships



[View More](#)



Contact us

Address: Flat/Rm C 13/F Harvard Commercial Building 105-111 Thomson Road, Wan Chai, Hong Kong

Phone: +00852 9146 4856

Fax: +00852 3010 8510

Email: info@Allelco.com

Copyright © 2012-2023 AllelcoElec.com. All rights reserved.