

Image may be representation.  
See specifications for product details.



## DS1388Z-33

Manufacturer Part Number	<b>DS1388Z-33</b>
Manufacturer	<b>Maxim Integrated</b>
Allelco Part Number	32D-DS1388Z-33
ECAD Model	Request Free CAD Models
Parts Description	IC BATT CHG I2C RTC W/TRICKLE
Package	8-SOIC (0.154", 3.90mm Width)
Data sheet	DS1388Z-33.pdf

**Get a Quote**

DS1388Z-33 - Analog Devices Inc./Maxim Integrated.New Original in Stock. Download Linear Technology DS1388Z-33 datasheet/specifications on AllelcoElec.com.  
Request a quote for DS1388Z-33, please send us email: [info@allelco.com](mailto:info@allelco.com)

## Specifications

DS1388Z-33 Tech Specifications

DS1388Z-33 - Analog Devices Inc./Maxim Integrated technical specifications, attributes, parameters

Product Attribute	Attribute Value	Product Attribute	Attribute Value
Manufacturer	Maxim Integrated	Operating Temperature	-40°C ~ 85°C (TA)
Voltage - Supply, Battery	1.3V ~ 5.5V	Mounting Type	Surface Mount
Voltage - Supply	2.97V ~ 3.63V	Memory Size	512B
Type	Clock/Calendar	Interface	I <sup>2</sup> C
Time Format	HH:MM:SS:hh (12/24 hr)	Features	Alarm, EEPROM, Leap Year, Supervisor, Trickle-Charger, Watchdog Timer
Supplier Device Package	8-SOIC	Date Format	YY-MM-DD-dd
Series	-	Current - Timekeeping (Max)	150µA @ 2.97V ~ 3.63V
Package / Case	8-SOIC (0.154", 3.90mm Width)	Base Product Number	DS1388
Package	Bulk		

## Parts with Similar Specifications

The three parts on the right have similar specifications to Analog Devices Inc./Maxim Integrated DS1388Z-33

Product Attribute				
Part Number	DS1388Z-33	DS1390U-33	DS1374U-33+T&R	DS1388Z-33+T&R
Manufacturer	Analog Devices Inc./Maxim Integrated	Analog Devices Inc./Maxim Integrated	Analog Devices Inc./Maxim Integrated	Analog Devices Inc./Maxim Integrated
Base Product Number	DS1388	DS1390	DS1374	DS1388
Features	Alarm, EEPROM, Leap Year, Supervisor, Trickle-Charger, Watchdog Timer	Alarm, Leap Year, Square Wave Output, Trickle-Charger	Alarm, Square Wave Output, Trickle-Charger, Watchdog Timer	EEPROM, Leap Year, Supervisor, Trickle-Charger, Watchdog Timer
Package / Case	8-SOIC (0.154", 3.90mm Width)	10-TFSOP, 10-MSOP (0.118", 3.00mm Width)	10-TFSOP, 10-MSOP (0.118", 3.00mm Width)	8-SOIC (0.154", 3.90mm Width)
Date Format	YY-MM-DD-dd	YY-MM-DD-dd	Binary	YY-MM-DD-dd
Operating Temperature	-40°C ~ 85°C (TA)	-40°C ~ 85°C (TA)	-40°C ~ 85°C	-40°C ~ 85°C
Memory Size	512B	-	-	512B
Voltage - Supply	2.97V ~ 3.63V	2.97V ~ 5.5V	2.97V ~ 5.5V	2.97V ~ 3.63V
Package	Bulk	Bulk	Tape & Reel (TR)	Tape & Reel (TR)
Interface	I <sup>2</sup> C	SPI, 4-Wire Serial	I <sup>2</sup> C, 2-Wire Serial	I <sup>2</sup> C, 2-Wire Serial
Supplier Device Package	8-SOIC	10-uMAX	10-uMAX/uSOP	8-SOIC
Time Format	HH:MM:SS:hh (12/24 hr)	HH:MM:SS:hh (12/24 hr)	Binary	HH:MM:SS:hh (12/24 hr)
Type	Clock/Calendar	Clock/Calendar	Binary Counter	Clock/Calendar
Voltage - Supply, Battery	1.3V ~ 5.5V	1.3V ~ 5.5V	1.3V ~ 5.5V	1.3V ~ 5.5V
Current - Timekeeping (Max)	150µA @ 2.97V ~ 3.63V	175µA @ 2.97V ~ 5.5V	175µA @ 2.97V ~ 5.5V	150µA @ 2.97V ~ 3.63V
Series	-	-	-	-
Mounting Type	Surface Mount	Surface Mount	Surface Mount	Surface Mount

## Customers Also Interested in

### Recommended Products



**DS1390U-33**

Analog Devices Inc./Maxim Integrated  
IC BATT CHG SPI RTC W/TRICKLE



**DS1374U-33+T&R**

Analog Devices Inc./Maxim Integrated  
IC RTC BINARY COUNTER I2C 10UMAX



NO PICTURE

**DS1386-32K-150**

DALLAS



**DS1388Z-33+T&R**

Analog Devices Inc./Maxim Integrated  
IC RTC CLK/CALENDAR I2C 8SOIC



**DS1374U-33+T&R**

Analog Devices / Maxim Integrated



NO PICTURE

**DS1386-32K-120**

DALLAS



**DS1388Z-33+TR**

Analog Devices / Maxim Integrated



**DS1388Z-5+**

Analog Devices Inc./Maxim Integrated  
IC RTC CLK/CALENDAR I2C 8SOIC



**DS1375**

Analog Devices / Maxim Integrated



**DS1388Z-33+T**

Analog Devices / Maxim Integrated



**DS1374U-33+TR**

Analog Devices / Maxim Integrated



NO PICTURE

**DS1386-32K-150+**

DALLAS

**DS1385S**

DALLAS

**DS1388Z-3**Analog Devices Inc./Maxim Integrated  
IC BATT CHG I2C RTC W/TRICKLE**DS1390U-33+**Analog Devices Inc./Maxim Integrated  
IC RTC CLK/CALENDAR SPI 10UMAX**DS1388Z-33+**Analog Devices Inc./Maxim Integrated  
IC RTC CLK/CALENDAR I2C 8SOIC**DS1390U-18+**Analog Devices Inc./Maxim Integrated  
IC RTC CLK/CALENDAR SPI 10UMAX**DS1387**

DALLAS

## Shipment

### Delivery Time

In-stock items can be shipped within 24 hours. Some parts will be arranged for delivery within 1-2 days from the date all items arrive at our warehouse. And Allelco ships order once a day at about 17:00, except Sunday. Once the goods are shipped, the estimated delivery time depends on the shipping methods and Delivery destination. The table below shows are the logistic time for some common countries.

### Delivery Cost

> Use your express account for shipment if you have one.

> Use our account for the shipment. Refer to the table below for the approximate charges.

(Different time frame / countries / package size has different price.)

### Delivery Method

> Global Common Shipment by DHL / UPS / FedEx / TNT / EMS / SF we support.

> Others more shipping ways, please get in touch with your customer manager.

Common Countries Logistic Time Reference		
Region	Country	Logistic Time(Day)
America	United States	5
	Brazil	7
Europe	Germany	5
	United Kingdom	4
	Italy	5
Oceania	Australia	6
	New Zealand	7
Asia	India	6
	Japan	7
Middle East	Israel	6

DHL & FedEx Shipment Charges Reference	
Shipment charges(KG)	Reference DHL(USD\$)
0.00kg-1.00kg	USD\$60.00
1.00kg-2.00kg	USD\$70.00
2.00kg-3.00kg	USD\$80.00

Note: The above table is for reference only. There may have some data bias for the uncontrollable factors.

Contact us if you have any questions.

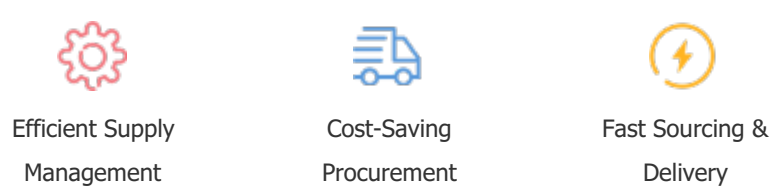
## Payment Support

The payment method can be chosen from the methods shown below:

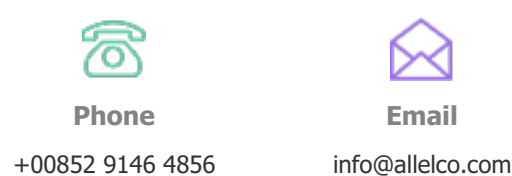
Wire Transfer (T/T, Bank Transfer), Western Union, Credit card, PayPal.



## Your Faithful Supply Chain Partner -



Contact us if you have any questions.



+00852 9146 4856

info@allelco.com

## Certifications & Memberships



View More