



Image may be representation.  
See specifications for product details.



## LDP01-30AY

Manufacturer Part Number	<b>LDP01-30AY</b>
Manufacturer	<b>STMicroelectronics</b>
Allelco Part Number	32D-LDP01-30AY
ECAD Model	PCB Footprint and Symbol
Parts Description	TVS DIODE 27VWM 40VC D2PAK
Package	TO-263-3, D <sup>2</sup> Pak (2 Leads + Tab), TO-263AB
Data sheet	<b>LDP01Y.pdf</b>
RoHs Status	<b>ROHS3 Compliant</b>

[Get a Quote](#)

LDP01-30AY - STMicroelectronics.New Original in Stock. Download Linear Technology LDP01-30AY datasheet/specifications on AllelcoElec.com.  
Request a quote for LDP01-30AY, please send us email: [info@allelco.com](mailto:info@allelco.com)

### Specifications

LDP01-30AY Tech Specifications

LDP01-30AY - STMicroelectronics technical specifications, attributes, parameters

Product Attribute	Attribute Value	Product Attribute	Attribute Value
Manufacturer	STMicroelectronics	Power - Peak Pulse	-
Voltage - Reverse Standoff (Typ)	27V	Package / Case	TO-263-3, D <sup>2</sup> Pak (2 Leads + Tab), TO-263AB
Voltage - Clamping (Max) @ Ipp	40V	Package	Tape & Reel (TR)
Voltage - Breakdown (Min)	28.9V	Operating Temperature	-55°C ~ 175°C (TJ)
Unidirectional Channels	1	Mounting Type	Surface Mount
Type	Zener	Current - Peak Pulse (10/1000µs)	125A
Supplier Device Package	D <sup>2</sup> PAK	Capacitance @ Frequency	-
Series	Automotive, AEC-Q101, LDP01Y, TRANSIL™	Base Product Number	LDP01
Power Line Protection	No	Applications	Automotive

### Parts with Similar Specifications

The three parts on the right have similar specifications to STMicroelectronics LDP01-30AY

Product Attribute				
Part Number	LDP01-30AY	SMCJ12CA	SMC5K10A-M3/H	SMCJ180CA
Manufacturer	STMicroelectronics	Bourns Inc.	Vishay General Semiconductor - Diodes Division	Littelfuse Inc.
Applications	Automotive	General Purpose	General Purpose	General Purpose
Voltage - Reverse Standoff (Typ)	27V	12V	10V	180V
Package / Case	TO-263-3, D <sup>2</sup> Pak (2 Leads + Tab), TO-263AB	DO-214AB, SMC	DO-214AB, SMC	DO-214AB, SMC
Type	Zener	Zener	Zener	Zener
Power Line Protection	No	No	No	No
Mounting Type	Surface Mount	Surface Mount	Surface Mount	Surface Mount
Series	Automotive, AEC-Q101, LDP01Y, TRANSIL™	SMCJ	TransZorb®	SMCJ
Operating Temperature	-55°C ~ 175°C (TJ)	-55°C ~ 150°C (TJ)	-55°C ~ 150°C (TJ)	-55°C ~ 150°C (TJ)
Voltage - Breakdown (Min)	28.9V	13.3V	11.1V	201V
Base Product Number	LDP01	SMCJ12	SMC5K10	-
Unidirectional Channels	1	-	1	-
Current - Peak Pulse (10/1000µs)	125A	75.4A	294.1A	5.1A
Capacitance @ Frequency	-	-	-	-
Power - Peak Pulse	-	1500W (1.5kW)	5000W (5kW)	1500W (1.5kW)
Voltage - Clamping (Max) @ Ipp	40V	19.9V	17V	292V
Supplier Device Package	D <sup>2</sup> PAK	DO-214AB (SMC)	DO-214AB (SMCJ)	DO-214AB (SMCJ)
Package	Tape & Reel (TR)	Tape & Reel (TR)	Tape & Reel (TR)	Tape & Reel (TR)

### LDP01-30AY Datasheet PDF

Download LDP01-30AY pdf datasheets and STMicroelectronics documentation for LDP01-30AY - STMicroelectronics.

#### PCN Packaging

Material Barrier Bag 17/Dec/2020.pdf

Mult Dev Inner Box Chg 9/Dec/2021.pdf

#### PCN Assembly/Origin

2.73KHz.pdf

#### HTML Datasheet

LDP01Y.pdf

### Customers Also Interested in

## Recommended Products



### SMCJ12CA

Bourns Inc.  
TVS DIODE 12VWM 19.9VC SMC



### SMC5K10A-M3/H

Vishay General Semiconductor - Diodes Division  
TVS DIODE 10VWM 17VC DO214AB



### SMCJ180CA

Littelfuse Inc.  
TVS DIODE 180VWM 292VC DO214AB



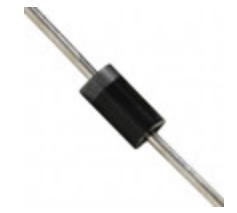
### P6KE30A-E3/54

Vishay General Semiconductor - Diodes Division  
TVS DIODE 25.6VWM 41.4VC DO204AC



### P6SMB22A

Bourns Inc.  
TVS DIODE 18.8VWM 30.6VC DO214AA



### 1V5KE30CA

Taiwan Semiconductor Corporation  
TVS DIODE 25.6VWM 41.4VC DO201AD



### RD33FM-T1-AZ

Renesas  
RD33FM-T1-AZ - ZENER DIODES1 W P



### LDPW-162-242+

Mini-Circuits  
RF DIPLXER 0.825GHZ/4.2GHZ 0603



### LDP01-26AY

STMicroelectronics  
TVS DIODE 22VWM 36VC D2PAK



### 15KPA60A

MDE Semiconductor Inc  
TVS DIODE UP 60VRWM 97.4VC



### LDP01-39AY

STMicroelectronics  
TVS DIODE 33VWM 51.5VC D2PAK

### SMCJ11A

Taiwan Semiconductor Corporation  
TVS DIODE 11VWM 18.2VC SMC



### SM8S20AHE3\_A/I

Vishay General Semiconductor - Diodes Division  
TVS DIODE 20VWM 32.4VC DO218AB



### SMCJ36

Littelfuse Inc.  
TVS DIODE 36VWM 61.01VC DO214AB



### SMBJ18

Meritek  
TVS DIODE 18VWM 32.2VC



### LDPG-212-322+

Mini-Circuits  
RF DIPLXER 1.05GHZ/3.8GHZ 0805



### SMBJ22A

Yangzhou Yangjie Electronic Technology Co.,Ltd  
TVS DIODE 22VWM 35.5VC DO214AA



### MMBZ5V6B

Fairchild Semiconductor  
MMBZ5V6 - TRANS VOLTAGE SUPPRESS

## Shipment

### Delivery Time

In-stock items can be shipped within 24 hours. Some parts will be arranged for delivery within 1-2 days from the date all items arrive at our warehouse. And Allelco ships order once a day at about 17:00, except Sunday. Once the goods are shipped, the estimated delivery time depends on the shipping methods and Delivery destination. The table below shows are the logistic time for some common countries.

### Delivery Cost

> Use your express account for shipment if you have one.

> Use our account for the shipment. Refer to the table below for the approximate charges.

(Different time frame / countries / package size has different price.)

### Delivery Method

> Global Common Shipment by DHL / UPS / FedEx / TNT / EMS / SF we support.

> Others more shipping ways, please get in touch with your customer manager.

Common Countries Logistic Time Reference		
Region	Country	Logistic Time(Day)
America	United States	5
	Brazil	7
Europe	Germany	5
	United Kingdom	4
	Italy	5
Oceania	Australia	6
	New Zealand	7
Asia	India	6
	Japan	7
Middle East	Israel	6

DHL & FedEx Shipment Charges Reference	
Shipment charges(KG)	Reference DHL(USD\$)
0.00kg-1.00kg	USD\$60.00
1.00kg-2.00kg	USD\$70.00
2.00kg-3.00kg	USD\$80.00

Note: The above table is for reference only. There may have some data bias for the uncontrollable factors.

Contact us if you have any questions.

## Payment Support

The payment method can be chosen from the methods shown below:

Wire Transfer (T/T, Bank Transfer), Western Union, Credit card, PayPal.



## Your Faithful Supply Chain Partner -



Efficient Supply Management



Cost-Saving Procurement



Fast Sourcing & Delivery

Contact us if you have any questions.



Phone

+00852 9146 4856



Email

info@allelco.com

## Certifications & Memberships



View More



## Contact us

Address: Flat/Rm C 13/F Harvard Commercial Building 105-111 Thomson Road, Wan Chai, Hong Kong

Phone: +00852 9146 4856

Fax: +00852 3010 8510

Email: info@Allelco.com

Copyright © 2012-2023 AllelcoElec.com. All rights reserved.