

Image may be representation.  
See specifications for product details.



## EP2S180F1020C4N

Manufacturer Part Number **EP2S180F1020C4N**

Manufacturer **Intel**

Allelco Part Number **32D-EP2S180F1020C4N**

ECAD Model [Request Free CAD Models](#)

Parts Description **IC FPGA 742 I/O 1020FBGA**

Package **1020-BBGA**

Data sheet [Virtual JTAG Megafuntion Guide.pdf](#)

[Stratix II Device Handbook.pdf](#)

[896-FBGA Pkg Info.pdf](#)

RoHs Status **RoHS Compliant**

[Get a Quote](#)

EP2S180F1020C4N - Intel.New Original in Stock. Download Linear Technology EP2S180F1020C4N datasheet/specifications on AllelcoElec.com.  
Request a quote for EP2S180F1020C4N, please send us email: [info@allelco.com](mailto:info@allelco.com)

## Specifications

EP2S180F1020C4N Tech Specifications

EP2S180F1020C4N - Intel technical specifications, attributes, parameters

Product Attribute	Attribute Value	Product Attribute	Attribute Value
Manufacturer	Intel	Operating Temperature	0°C ~ 85°C (TJ)
Voltage - Supply	1.15V ~ 1.25V	Number of Logic Elements/Cells	179400
Total RAM Bits	9383040	Number of LABs/CLBs	8970
Supplier Device Package	1020-FBGA (33x33)	Number of I/O	742
Series	Stratix® II	Mounting Type	Surface Mount
Package / Case	1020-BBGA	Base Product Number	EP2S180
Package	Tray		

## Parts with Similar Specifications

The three parts on the right have similar specifications to Intel EP2S180F1020C4N

Product Attribute				
Part Number	EP2S180F1020C4N	EP2S180F1020C5	EP2S180F1020C4N	EP2S180F1020C3N
Manufacturer	Intel	Intel	Altera	Intel
Mounting Type	Surface Mount	Surface Mount	Surface Mount	Surface Mount
Package / Case	1020-BBGA	1020-BBGA	1020-BBGA, FCBGA	1020-BBGA
Number of LABs/CLBs	8970	8970	8970	8970
Package	Tray	Tray	Bulk	Tray
Series	Stratix® II	Stratix® II	Stratix® II	Stratix® II
Voltage - Supply	1.15V ~ 1.25V	1.15V ~ 1.25V	1.15V ~ 1.25V	1.15V ~ 1.25V
Base Product Number	EP2S180	EP2S180	-	EP2S180
Supplier Device Package	1020-FBGA (33x33)	1020-FBGA (33x33)	1020-FBGA (33x33)	1020-FBGA (33x33)
Number of Logic Elements/Cells	179400	179400	179400	179400
Number of I/O	742	742	742	742
Operating Temperature	0°C ~ 85°C (TJ)	0°C ~ 85°C (TJ)	0°C ~ 85°C (TJ)	0°C ~ 85°C (TJ)
Total RAM Bits	9383040	9383040	9383040	9383040

## EP2S180F1020C4N Datasheet PDF

Download EP2S180F1020C4N pdf datasheets and Intel documentation for EP2S180F1020C4N - Intel.

### Datasheets



[Virtual JTAG Megafuntion Guide.pdf](#)



[Stratix II Device Handbook.pdf](#)



[896-FBGA Pkg Info.pdf](#)

### PCN Design/Specification



[Cylindrical Battery Holders.pdf](#)

### PCN Packaging



[Mult Dev Label CHG 24/Jan/2020.pdf](#)



[Mult Dev Label Chgs 24/Feb/2020.pdf](#)

### PCN Obsolescence/ EOL



[Mult Dev Add Subs 6/Sep/2019.pdf](#)



[Mult Dev EOL 4/Dec/2020.pdf](#)

### PCN Assembly/Origin



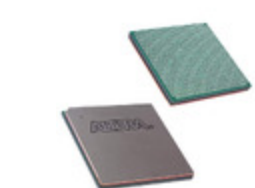
[2.73KHz.pdf](#)

### PCN Other

PCN Part Status Change

Customers Also Interested in

Recommended Products



**EP2S180F1020C5**  
Intel  
IC FPGA 742 I/O 1020FBGA



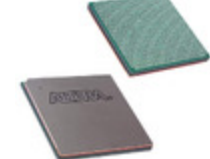
**EP2S180F1020C4N**  
Altera  
IC FPGA 742 I/O 1020FBGA



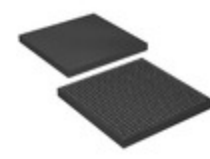
**EP2S180F1020C3N**  
Intel  
IC FPGA 742 I/O 1020FBGA



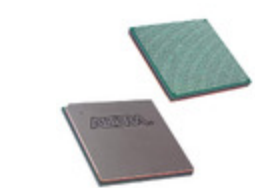
**EP2S180F1508C4N**  
Intel  
IC FPGA 1170 I/O 1508FBGA



**EP2S180F1020I4**  
Intel  
IC FPGA 742 I/O 1020FBGA



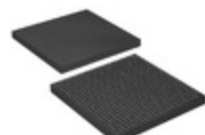
**EP2S15F672C4N**  
Intel  
IC FPGA 366 I/O 672FBGA



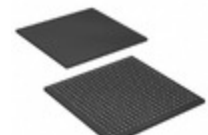
**EP2S180F1020I4N**  
Intel  
IC FPGA 742 I/O 1020FBGA



**EP2S180F1020C5N**  
Altera  
IC FPGA 742 I/O 1020FBGA



**EP2S15F672C5N**  
Intel  
IC FPGA 366 I/O 672FBGA



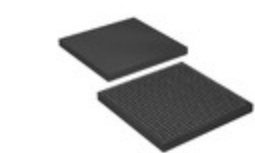
**EP2S15F484I4N**  
Intel  
IC FPGA 342 I/O 484FBGA



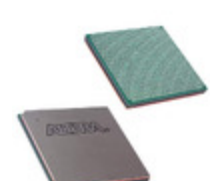
**EP2S180F1020C5**  
Altera  
IC FPGA 742 I/O 1020FBGA



**EP2S180F1508C3**  
Intel  
IC FPGA 1170 I/O 1508FBGA



**EP2S15F672C5**  
Intel  
IC FPGA 366 I/O 672FBGA



**EP2S180F1020C5N**  
Intel  
IC FPGA 742 I/O 1020FBGA



**EP2S15F672C3N**  
Intel  
IC FPGA 366 I/O 672FBGA



**EP2S180F1020C3N**  
Altera  
IC FPGA 742 I/O 1020FBGA



**EP2S180F1508C3N**  
Intel  
IC FPGA 1170 I/O 1508FBGA



**EP2S180F1508C3**  
Altera  
IC FPGA 1508FBGA

Shipment

Delivery Time

In-stock items can be shipped within 24 hours. Some parts will be arranged for delivery within 1-2 days from the date all items arrive at our warehouse. And Allelco ships order once a day at about 17:00, except Sunday. Once the goods are shipped, the estimated delivery time depends on the shipping methods and Delivery destination. The table below shows are the logistic time for some common countries.

Delivery Cost

- > Use your express account for shipment if you have one.
  - > Use our account for the shipment. Refer to the table below for the approximate charges.
- (Different time frame / countries / package size has different price.)

Delivery Method

- > Global Common Shipment by DHL / UPS / FedEx / TNT / EMS / SF we support.
- > Others more shipping ways, please get in touch with your customer manager.

Common Countries Logistic Time Reference		
Region	Country	Logistic Time(Day)
America	United States	5
	Brazil	7
Europe	Germany	5
	United Kingdom	4
	Italy	5
Oceania	Australia	6
	New Zealand	7
Asia	India	6
	Japan	7
Middle East	Israel	6

DHL & FedEx Shipment Charges Reference	
Shipment charges(KG)	Reference DHL(USD\$)
0.00kg-1.00kg	USD\$60.00
1.00kg-2.00kg	USD\$70.00
2.00kg-3.00kg	USD\$80.00

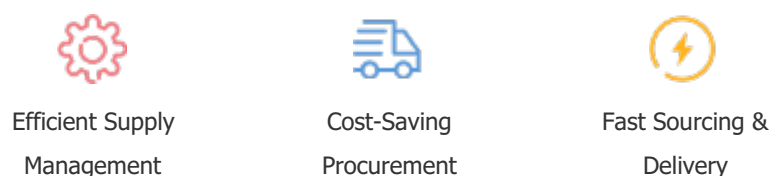
Note: The above table is for reference only. There may have some data bias for the uncontrollable factors. Contact us if you have any questions.

Payment Support

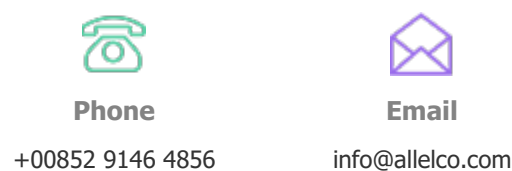
The payment method can be chosen from the methods shown below:  
Wire Transfer (T/T, Bank Transfer), Western Union, Credit card, PayPal.



Your Faithful Supply Chain Partner -



Contact us if you have any questions.



Certifications & Memberships



View More

Contact us

Address: Flat/Rm C 13/F Harvard Commercial Building 105-111 Thomson Road, Wan Chai, Hong Kong  
Phone: +00852 9146 4856  
Fax: +00852 3010 8510  
Email: info@Allelco.com