



MAX16989BATJC/V+T

| | |
|--------------------------|----------------------------------|
| Manufacturer Part Number | MAX16989BATJC/V+T |
| Manufacturer | Maxim Integrated |
| Allelco Part Number | 32D-MAX16989BATJC/V+T |
| ECAD Model | Request Free CAD Models |
| Parts Description | IC CONTROLLER STEP DOWN 12A TQFN |
| Package | |
| Data sheet | MAX16989BATJC/V+T.pdf |
| RoHS Status | ROHS3 Compliant |



Get a Quote

MAX16989BATJC/V+T - Analog Devices Inc./Maxim Integrated.New Original in Stock. Download Linear Technology MAX16989BATJC/V+T datasheet/specifications on AllelcoElec.com.
Request a quote for MAX16989BATJC/V+T, please send us email: info@allelco.com

Specifications

MAX16989BATJC/V+T Tech Specifications
MAX16989BATJC/V+T - Analog Devices Inc./Maxim Integrated technical specifications, attributes, parameters

| Product Attribute | Attribute Value | Product Attribute | Attribute Value |
|-------------------|------------------|---------------------|------------------|
| Manufacturer | Maxim Integrated | Package | Tape & Reel (TR) |
| Series | * | Base Product Number | MAX16989 |

Parts with Similar Specifications

The three parts on the right have similar specifications to Analog Devices Inc./Maxim Integrated MAX16989BATJC/V+T

| Product Attribute | | | | |
|---------------------|--------------------------------------|--------------------------------------|--------------------------------------|--------------------------------------|
| Part Number | MAX16989BATJC/V+T | MAX16990AUBA/V+T | MAX16990ATCD/V+T | MAX16990AUBB/V+T |
| Manufacturer | Analog Devices Inc./Maxim Integrated | Analog Devices Inc./Maxim Integrated | Analog Devices Inc./Maxim Integrated | Analog Devices Inc./Maxim Integrated |
| Base Product Number | MAX16989 | MAX16990 | MAX16990 | MAX16990 |
| Series | * | Automotive, AEC-Q100 | Automotive, AEC-Q100 | Automotive, AEC-Q100 |
| Package | Tape & Reel (TR) | Tape & Reel (TR) | Tape & Reel (TR) | Tape & Reel (TR) |

MAX16989BATJC/V+T Datasheet PDF

Download MAX16989BATJC/V+T pdf datasheets and Analog Devices Inc./Maxim Integrated documentation for MAX16989BATJC/V+T - Analog Devices Inc./Maxim Integrated.

Environmental Information

Maxim Integrated REACH.pdf

Maxim Integrated RoHS Cert.pdf

Customers Also Interested in

Recommended Products

| | | | | | |
|--|--|---|--|--|---|
| MAX16990AUBA/V+T Analog Devices Inc./Maxim Integrated IC REG CTRLR BOOST/SEPIC 10UMAX | MAX1698EUB Analog Devices Inc./Maxim Integrated IC LED DRIVER CTRLR 10UMAX | MAX16984RATI/V+T Analog Devices Inc./Maxim Integrated IC REG CONV USB 1OUT 28TQFN | MAX16987RATIA/V+T Analog Devices / Maxim Integrated | MAX16990ATCD/V+T Analog Devices Inc./Maxim Integrated IC REG CTRLR BOOST/SEPIC 12TQFN | MAX16984SATI Analog Devices / Maxim Integrated |
| MAX16984SATI/V+T Analog Devices Inc./Maxim Integrated IC REG CONV USB 1OUT 28TQFN | MAX1698EUB+ Analog Devices Inc./Maxim Integrated IC LED DRIVER CTRLR 10UMAX | MAX16987SATI/V+T Analog Devices Inc./Maxim Integrated IC LED DRIVER CTRLR NO 28TQFN | MAX16990AUBB/V+T Analog Devices Inc./Maxim Integrated IC REG CTRLR BOOST/SEPIC 10UMAX | MAX16984RATI/V+ Analog Devices Inc./Maxim Integrated IC REG CONV USB 1OUT 28TQFN | MAX16989ATJC/V+T Analog Devices Inc./Maxim Integrated IC CONTROLLER STEP DOWN 12A TQFN |
| MAX1698EUB+T Analog Devices Inc./Maxim Integrated IC LED DRIVER CTRLR 10UMAX | MAX16984SAGI/VY+T Analog Devices Inc./Maxim Integrated AUTOMOTIVE 2.1A STEP-DOWN CONVER | MAX16990AUBA/V+ Analog Devices Inc./Maxim Integrated IC REG CTRLR BOOST/SEPIC 10UMAX | MAX16986RATI/V+GE Analog Devices / Maxim Integrated | MAX1698AEUB+T Analog Devices Inc./Maxim Integrated IC LED DRIVER CTRLR 10UMAX | MAX16986RATI/V+ Analog Devices Inc./Maxim Integrated IC USB PROTECTOR |

Shipment

Delivery Time

In-stock items can be shipped within 24 hours. Some parts will be arranged for delivery within 1-2 days from the date all items arrive at our warehouse. And Allelco ships order once a day at about 17:00, except Sunday. Once the goods are shipped, the estimated delivery time depends on the shipping methods and Delivery destination. The table below shows are the logistic time for some common countries.

Delivery Cost

- > Use your express account for shipment if you have one.
 - > Use our account for the shipment. Refer to the table below for the approximate charges.
- (Different time frame / countries / package size has different price.)

Delivery Method

- > Global Common Shipment by DHL / UPS / FedEx / TNT / EMS / SF we support.
- > Others more shipping ways, please get in touch with your customer manager.

| Region | Country | Logistic Time(Day) | Shipment charges(KG) | Reference DHL(USD\$) |
|-------------|----------------|--------------------|----------------------|----------------------|
| America | United States | 5 | 0.00kg-1.00kg | USD\$60.00 |
| | Brazil | 7 | 1.00kg-2.00kg | USD\$70.00 |
| Europe | Germany | 5 | 2.00kg-3.00kg | USD\$80.00 |
| | United Kingdom | 4 | | |
| | Italy | 5 | | |
| Oceania | Australia | 6 | | |
| | New Zealand | 7 | | |
| Asia | India | 6 | | |
| | Japan | 7 | | |
| Middle East | Israel | 6 | | |

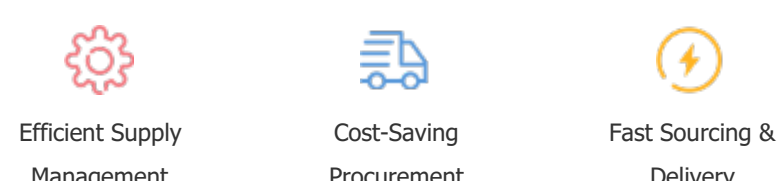
Note: The above table is for reference only. There may have some data bias for the uncontrollable factors.
Contact us if you have any questions.

Payment Support

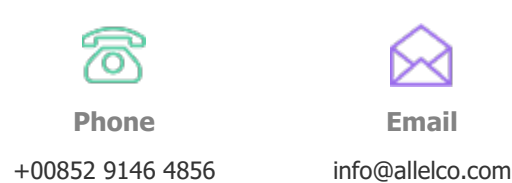
The payment method can be chosen from the methods shown below:
Wire Transfer (T/T, Bank Transfer), Western Union, Credit card, PayPal.



Your Faithful Supply Chain Partner -



Contact us if you have any questions.



Certifications & Memberships



[View More](#)



Contact us

Address: Flat/Rm C 13/F Harvard Commercial Building 105-111 Thomson Road, Wan Chai, Hong Kong
 Phone: +00852 9146 4856
 Fax: +00852 3010 8510
 Email: info@Allelco.com

Copyright © 2012-2023 AllelcoElec.com. All rights reserved.