



# MAX4238AUT-T

Manufacturer Part Number	<b>MAX4238AUT-T</b>
Manufacturer	<b>Maxim Integrated</b>
Allelco Part Number	32D-MAX4238AUT-T
ECAD Model	Request Free CAD Models
Parts Description	IC OPAMP GP 1 CIRCUIT SOT23-6
Package	SOT-23-6
Data sheet	MAX4238AUT-T.pdf



**Get a Quote**

MAX4238AUT-T - Analog Devices Inc./Maxim Integrated. New Original in Stock. Download Linear Technology MAX4238AUT-T datasheet/specifications on AllelcoElec.com.  
Request a quote for MAX4238AUT-T, please send us email: [info@allelco.com](mailto:info@allelco.com)

## Specifications

MAX4238AUT-T Tech Specifications  
MAX4238AUT-T - Analog Devices Inc./Maxim Integrated technical specifications, attributes, parameters

Product Attribute	Attribute Value	Product Attribute	Attribute Value
Manufacturer	Maxim Integrated	Output Type	Single Ended, Rail-to-Rail
Voltage - Supply Span (Min)	2.7 V	Operating Temperature	-40°C ~ 125°C
Voltage - Supply Span (Max)	5.5 V	Number of Circuits	1
Voltage - Input Offset	0.1 µV	Mounting Type	Surface Mount
Supplier Device Package	SOT-23-6	Gain Bandwidth Product	1 MHz
Slew Rate	0.35V/µs	Current - Supply	600µA
Series	-	Current - Output / Channel	40 mA
Package / Case	SOT-23-6	Current - Input Bias	1 pA
Package	Bulk	Amplifier Type	General Purpose

## Parts with Similar Specifications

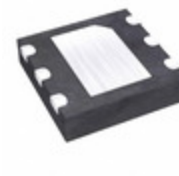
The three parts on the right have similar specifications to Analog Devices Inc./Maxim Integrated MAX4238AUT-T

Product Attribute				
Part Number	MAX4238AUT-T	MAX423CPD	MAX4239AUT+T	MAX4238ASA
Manufacturer	Analog Devices Inc./Maxim Integrated	Analog Devices Inc./Maxim Integrated	Analog Devices Inc./Maxim Integrated	Analog Devices Inc./Maxim Integrated
Slew Rate	0.35V/µs	0.5V/µs	1.6V/µs	0.35V/µs
Mounting Type	Surface Mount	Through Hole	Surface Mount	Surface Mount
Current - Input Bias	1 pA	-	1 pA	1 pA
Current - Output / Channel	40 mA	-	40 mA	40 mA
Voltage - Input Offset	0.1 µV	-	0.1 µV	0.1 µV
Voltage - Supply Span (Max)	5.5 V	-	5.5 V	5.5 V
Output Type	Single Ended, Rail-to-Rail	-	Single Ended, Rail-to-Rail	Single Ended, Rail-to-Rail
Voltage - Supply Span (Min)	2.7 V	-	2.7 V	2.7 V
Gain Bandwidth Product	1 MHz	-	6.5 MHz	1 MHz
Number of Circuits	1	1	1	1
Package / Case	SOT-23-6	14-DIP (0.300", 7.62mm)	SOT-23-6	8-SOIC (0.154", 3.90mm Width)
Series	-	*	-	-
Current - Supply	600µA	-	600µA	600µA
Amplifier Type	General Purpose	Instrumentation	General Purpose	General Purpose
Operating Temperature	-40°C ~ 125°C	-	-40°C ~ 125°C	-40°C ~ 125°C
Supplier Device Package	SOT-23-6	14-PDIP	SOT-6	8-SOIC
Package	Bulk	Tube	Tape & Reel (TR)	Tube

## Customers Also Interested in

### Recommended Products

<b>MAX4238ASAT</b> Analog Devices / Maxim Integrated	<b>MAX423CPD</b> Analog Devices Inc./Maxim Integrated IC OPAMP +/-15V CHOP/STAB 14-DIP	<b>MAX4239AUT+T</b> Analog Devices Inc./Maxim Integrated IC OPAMP GP 1 CIRCUIT SOT6	<b>MAX4238ASA</b> Analog Devices Inc./Maxim Integrated IC OPAMP GP 1 CIRCUIT 8SOIC	<b>MAX4238AUT+</b> Analog Devices Inc./Maxim Integrated ULTRA-LOW OFFSET/DRIFT, LOW-NOISE	<b>MAX4238AUT/V+T</b> Analog Devices Inc./Maxim Integrated IC OPAMP GP 1 CIRCUIT SOT6
<b>MAX4238AUT/T+T</b> Analog Devices / Maxim Integrated	<b>MAX4239AUT/V+T</b> Analog Devices Inc./Maxim Integrated IC OPAMP GP 1 CIRCUIT SOT6	<b>MAX4238AUT+T</b> Analog Devices Inc./Maxim Integrated IC OPAMP GP 1 CIRCUIT SOT6	<b>MAX4238AUT#TG16</b> Analog Devices Inc./Maxim Integrated IC OPAMP GP 1 CIRCUIT SOT6	<b>MAX4238ASA+T</b> Analog Devices Inc./Maxim Integrated IC OPAMP GP 1 CIRCUIT 8SOIC	<b>MAX4239ASA+</b> Analog Devices Inc./Maxim Integrated IC OPAMP GP 1 CIRCUIT 8SOIC



### MAX4238AUT

Analog Devices Inc./Maxim Integrated  
IC OPAMP GP 1 CIRCUIT SOT23-6

### MAX4239AUT#TG16

Analog Devices Inc./Maxim Integrated  
IC OPAMP GP 1 CIRCUIT SOT6

### MAX423EPD

Analog Devices Inc./Maxim Integrated  
IC OPAMP +/-15V CHOP/STAB 14-DIP

### MAX4238ATT+T

Analog Devices Inc./Maxim Integrated  
IC OPAMP GP 1 CIRCUIT 6TDFN

### MAX4238ASA+

Analog Devices Inc./Maxim Integrated  
IC OPAMP GP 1 CIRCUIT 8SOIC

### MAX4237EUT+T

Analog Devices Inc./Maxim Integrated  
IC OPAMP GP 1 CIRCUIT SOT6

## Shipment

### Delivery Time

In-stock items can be shipped within 24 hours. Some parts will be arranged for delivery within 1-2 days from the date all items arrive at our warehouse. And Allelco ships order once a day at about 17:00, except Sunday. Once the goods are shipped, the estimated delivery time depends on the shipping methods and Delivery destination. The table below shows are the logistic time for some common countries.

### Delivery Cost

- > Use your express account for shipment if you have one.
  - > Use our account for the shipment. Refer to the table below for the approximate charges.
- (Different time frame / countries / package size has different price.)

### Delivery Method

- > Global Common Shipment by DHL / UPS / FedEx / TNT / EMS / SF we support.
- > Others more shipping ways, please get in touch with your customer manager.

Common Countries Logistic Time Reference

Region	Country	Logistic Time(Day)
America	United States	5
	Brazil	7
Europe	Germany	5
	United Kingdom	4
	Italy	5
Oceania	Australia	6
	New Zealand	7
Asia	India	6
	Japan	7
Middle East	Israel	6

DHL & FedEx Shipment Charges Reference

Shipment charges(KG)	Reference DHL(USD\$)
0.00kg-1.00kg	USD\$60.00
1.00kg-2.00kg	USD\$70.00
2.00kg-3.00kg	USD\$80.00

Note: The above table is for reference only. There may have some data bias for the uncontrollable factors.  
Contact us if you have any questions.

### Payment Support

The payment method can be chosen from the methods shown below:  
Wire Transfer (T/T, Bank Transfer), Western Union, Credit card, PayPal.



### Your Faithful Supply Chain Partner -

Efficient Supply Management

Cost-Saving Procurement

Fast Sourcing & Delivery

Contact us if you have any questions.

Phone  
+00852 9146 4856

Email  
info@allelco.com

### Certifications & Memberships



[View More](#)

### Contact us

Address: Flat/Rm C 13/F Harvard Commercial Building 105-111 Thomson Road, Wan Chai, Hong Kong  
Phone: +00852 9146 4856  
Fax: +00852 3010 8510  
Email: info@Allelco.com