

Image may be representation.
See specifications for product details.



STGP15H60DF

Manufacturer Part Number	STGP15H60DF
Manufacturer	STMicroelectronics
Allelco Part Number	32D-STGP15H60DF
ECAD Model	PCB Symbol, Footprint & 3D Model
Parts Description	IGBT 600V 30A 115W TO220
Package	TO-220-3
Data sheet	STGx15H60DF.pdf
RoHs Status	ROHS3 Compliant

Get a Quote

STGP15H60DF - STMicroelectronics.New Original in Stock. Download Linear Technology STGP15H60DF datasheet/specifications on AllelcoElec.com.
Request a quote for STGP15H60DF, please send us email: info@allelco.com

Specifications

STGP15H60DF Tech Specifications

STGP15H60DF - STMicroelectronics technical specifications, attributes, parameters

Product Attribute	Attribute Value	Product Attribute	Attribute Value
Manufacturer	STMicroelectronics	Package / Case	TO-220-3
Voltage - Collector Emitter Breakdown (Max)	600 V	Package	Tube
Vce(on) (Max) @ Vge, Ic	2V @ 15V, 15A	Operating Temperature	-55°C ~ 175°C (TJ)
Test Condition	400V, 15A, 100hm, 15V	Mounting Type	Through Hole
Td (on/off) @ 25°C	24.5ns/118ns	Input Type	Standard
Switching Energy	136µJ (on), 207µJ (off)	IGBT Type	Trench Field Stop
Supplier Device Package	TO-220	Gate Charge	81 nC
Series	-	Current - Collector Pulsed (Icm)	60 A
Reverse Recovery Time (trr)	103 ns	Current - Collector (Ic) (Max)	30 A
Power - Max	115 W	Base Product Number	STGP15

Parts with Similar Specifications

The three parts on the right have similar specifications to STMicroelectronics STGP15H60DF

Product Attribute				
Part Number	STGP15H60DF	STGP10NB60SD	STGP10NC60HD	STGP19NC60KD
Manufacturer	STMicroelectronics	STMicroelectronics	STMicroelectronics	STMicroelectronics
Series	-	PowerMESH™	PowerMESH™	PowerMESH™
IGBT Type	Trench Field Stop	-	-	-
Reverse Recovery Time (trr)	103 ns	37 ns	22 ns	31 ns
Vce(on) (Max) @ Vge, Ic	2V @ 15V, 15A	1.75V @ 15V, 10A	2.5V @ 15V, 5A	2.75V @ 15V, 12A
Current - Collector (Ic) (Max)	30 A	29 A	20 A	35 A
Base Product Number	STGP15	STGP10	STGP10	STGP19
Operating Temperature	-55°C ~ 175°C (TJ)	-55°C ~ 150°C (TJ)	-55°C ~ 150°C (TJ)	-55°C ~ 150°C (TJ)
Gate Charge	81 nC	33 nC	19.2 nC	55 nC
Test Condition	400V, 15A, 100hm, 15V	480V, 10A, 1kOhm, 15V	390V, 5A, 100hm, 15V	480V, 12A, 100hm, 15V
Power - Max	115 W	80 W	65 W	125 W
Td (on/off) @ 25°C	24.5ns/118ns	700ns/1.2µs	14.2ns/72ns	30ns/105ns
Package / Case	TO-220-3	TO-220-3	TO-220-3	TO-220-3
Switching Energy	136µJ (on), 207µJ (off)	600µJ (on), 5mJ (off)	31.8µJ (on), 95µJ (off)	165µJ (on), 255µJ (off)
Package	Tube	Tube	Tube	Tube
Supplier Device Package	TO-220	TO-220	TO-220	TO-220
Mounting Type	Through Hole	Through Hole	Through Hole	Through Hole
Current - Collector Pulsed (Icm)	60 A	80 A	30 A	75 A
Input Type	Standard	Standard	Standard	Standard
Voltage - Collector Emitter Breakdown (Max)	600 V	600 V	600 V	600 V

STGP15H60DF Datasheet PDF

Download STGP15H60DF pdf datasheets and STMicroelectronics documentation for STGP15H60DF - STMicroelectronics.

Datasheets

[STGx15H60DF.pdf](#)

PCN Design/Specification

[Mult Dev Adv Material Notice 8/Apr/2019.pdf](#)

PCN Assembly/Origin

[STGP15H60DF.pdf](#)

Customers Also Interested in

Recommended Products



STGP10NB60SD
STMicroelectronics
IGBT 600V 29A 80W TO220



STGP10NC60HD
STMicroelectronics
IGBT 600V 20A 65W TO220



STGP19NC60KD
STMicroelectronics
IGBT 600V 35A 125W TO220



STGP20NC60V
STMicroelectronics
IGBT 600V 60A 200W TO220



STGP19NC60HD
STMicroelectronics
IGBT 600V 40A 130W TO220



STGP20V60DF
STMicroelectronics
IGBT 600V 40A 167W TO220AB



STGP20M65DF2
STMicroelectronics
IGBT TRENCH 650V 40A TO220



STGP14NC60KD
STMicroelectronics
IGBT 600V 25A 80W TO220



STGP10NB60SFP
STMicroelectronics
IGBT 600V 23A 25W TO220



STGP10NB60S
STMicroelectronics
IGBT 600V 29A 80W TO220



STGP12NB60KD
STMicroelectronics
IGBT 600V 30A 125W TO220

STGP10NC60KD
STMicroelectronics
IGBT 600V 20A 65W TO220



STGP19NC60SD
STMicroelectronics
IGBT 600V 40A 130W TO220



STGP15M65DF2
STMicroelectronics
TRENCH GATE FIELD-STOP IGBT M SE



STGP19NC60WD
STMicroelectronics
IGBT 600V 40A 125W TO220



STGP20H60DF
STMicroelectronics
IGBT 600V 40A 167W TO220



STGP10NB37LZ
STMicroelectronics
IGBT 440V 20A 125W TO220



STGP10M65DF2
STMicroelectronics
IGBT 650V 10A TO-220AB

Shipment

Delivery Time

In-stock items can be shipped within 24 hours. Some parts will be arranged for delivery within 1-2 days from the date all items arrive at our warehouse. And Allelco ships order once a day at about 17:00, except Sunday. Once the goods are shipped, the estimated delivery time depends on the shipping methods and Delivery destination. The table below shows are the logistic time for some common countries.

Delivery Cost

- > Use your express account for shipment if you have one.
 - > Use our account for the shipment. Refer to the table below for the approximate charges.
- (Different time frame / countries / package size has different price.)

Delivery Method

- > Global Common Shipment by DHL / UPS / FedEx / TNT / EMS / SF we support.
- > Others more shipping ways, please get in touch with your customer manager.

Common Countries Logistic Time Reference		
Region	Country	Logistic Time(Day)
America	United States	5
	Brazil	7
Europe	Germany	5
	United Kingdom	4
	Italy	5
Oceania	Australia	6
	New Zealand	7
Asia	India	6
	Japan	7
Middle East	Israel	6

DHL & FedEx Shipment Charges Reference	
Shipment charges(KG)	Reference DHL(USD\$)
0.00kg-1.00kg	USD\$60.00
1.00kg-2.00kg	USD\$70.00
2.00kg-3.00kg	USD\$80.00

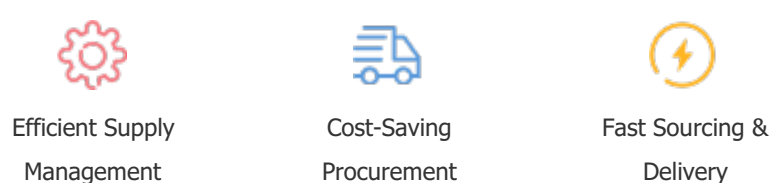
Note: The above table is for reference only. There may have some data bias for the uncontrollable factors. Contact us if you have any questions.

Payment Support

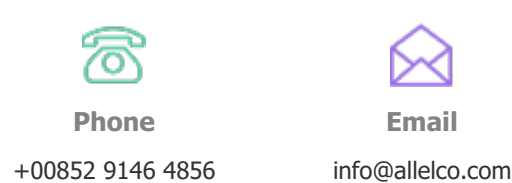
The payment method can be chosen from the methods shown below:
Wire Transfer (T/T, Bank Transfer), Western Union, Credit card, PayPal.



Your Faithful Supply Chain Partner -



Contact us if you have any questions.



Certifications & Memberships



[View More](#)

Contact us

Address: Flat/Rm C 13/F Harvard Commercial Building 105-111 Thomson Road, Wan Chai, Hong Kong
Phone: +00852 9146 4856
Fax: +00852 3010 8510
Email: info@Allelco.com