

Image may be representation.
See specifications for product details.



XC3S250E-4TQG144C

| | |
|--------------------------|--------------------------|
| Manufacturer Part Number | XC3S250E-4TQG144C |
| Manufacturer | AMD Xilinx |
| Allelco Part Number | 32D-XC3S250E-4TQG144C |
| ECAD Model | Request Free CAD Models |
| Parts Description | IC FPGA 108 I/O 144TQFP |
| Package | 144-LQFP |
| Data sheet | XC3S250E-4TQG144C.pdf |
| RoHs Status | ROHS3 Compliant |

Get a Quote

XC3S250E-4TQG144C - AMD.New Original in Stock. Download Linear Technology XC3S250E-4TQG144C datasheet/specifications on AllelcoElec.com.
Request a quote for XC3S250E-4TQG144C, please send us email: info@allelco.com

Specifications

XC3S250E-4TQG144C Tech Specifications
XC3S250E-4TQG144C - AMD technical specifications, attributes, parameters

| Product Attribute | Attribute Value | Product Attribute | Attribute Value |
|-------------------------|------------------|--------------------------------|-----------------|
| Manufacturer | AMD Xilinx | Operating Temperature | 0°C ~ 85°C (TJ) |
| Voltage - Supply | 1.14V ~ 1.26V | Number of Logic Elements/Cells | 5508 |
| Total RAM Bits | 221184 | Number of LABs/CLBs | 612 |
| Supplier Device Package | 144-TQFP (20x20) | Number of I/O | 108 |
| Series | Spartan@-3E | Number of Gates | 250000 |
| Package / Case | 144-LQFP | Mounting Type | Surface Mount |
| Package | Tray | Base Product Number | XC3S250 |

Parts with Similar Specifications

The three parts on the right have similar specifications to AMD XC3S250E-4TQG144C

| Product Attribute | | | | |
|--------------------------------|-------------------|-------------------------|--------------------------|--------------------------|
| Part Number | XC3S250E-4TQG144C | XC3S250E-4VQ100I | XC3S250E-4CPG132C | XC3S250E-4PQG208I |
| Manufacturer | AMD | AMD | AMD | AMD |
| Supplier Device Package | 144-TQFP (20x20) | 100-VQFP (14x14) | 132-CSPBGA (8x8) | 208-PQFP (28x28) |
| Total RAM Bits | 221184 | 221184 | 221184 | 221184 |
| Base Product Number | XC3S250 | XC3S250 | XC3S250 | XC3S250 |
| Operating Temperature | 0°C ~ 85°C (TJ) | -40°C ~ 100°C (TJ) | 0°C ~ 85°C (TJ) | -40°C ~ 100°C (TJ) |
| Number of LABs/CLBs | 612 | 612 | 612 | 612 |
| Number of Gates | 250000 | 250000 | 250000 | 250000 |
| Package / Case | 144-LQFP | 100-TQFP | 132-TFBGA, CSPBGA | 208-BFQFP |
| Voltage - Supply | 1.14V ~ 1.26V | 1.14V ~ 1.26V | 1.14V ~ 1.26V | 1.14V ~ 1.26V |
| Number of I/O | 108 | 66 | 92 | 158 |
| Series | Spartan@-3E | Spartan@-3E | Spartan@-3E | Spartan@-3E |
| Package | Tray | Tray | Tray | Tray |
| Number of Logic Elements/Cells | 5508 | 5508 | 5508 | 5508 |
| Mounting Type | Surface Mount | Surface Mount | Surface Mount | Surface Mount |

XC3S250E-4TQG144C Datasheet PDF

Download XC3S250E-4TQG144C pdf datasheets and AMD documentation for XC3S250E-4TQG144C - AMD.

PCN Assembly/Origin

[Mult Dev LeadFrame Chg 29/Oct/2018.pdf](#)

Environmental Information

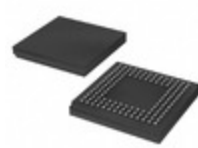
[Xilinx REACH211 Cert.pdf](#)

Customers Also Interested in

Recommended Products



XC3S250E-4VQ100I
AMD
IC FPGA 66 I/O 100VQFP



XC3S250E-4CPG132C
AMD
IC FPGA 92 I/O 132CSBGA



XC3S250E-4PQG208I
AMD
IC FPGA 158 I/O 208QFP



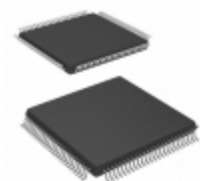
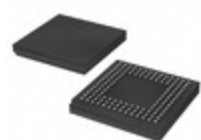
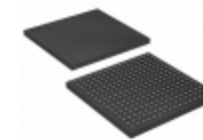
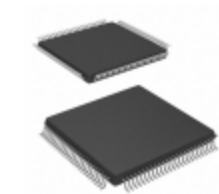
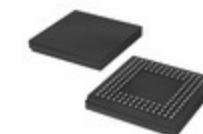
XC3S250E-4FT256I
AMD
IC FPGA 172 I/O 256FTBGA



XC3S250E-4FTG256C
AMD
IC FPGA 172 I/O 256FTBGA



XC3S250E-4PQ208C
Xilinx
IC FPGA 158 I/O 208QFP

**XC3S250E-4TQG144I**AMD
IC FPGA 108 I/O 144TQFP**XC3S250E-4VQ100C**AMD
IC FPGA 66 I/O 100VQFP**XC3S250E-4CPG132I**AMD
IC FPGA 92 I/O 132CSBGA**XC3S250E-4FT256C**AMD
IC FPGA 172 I/O 256FTBGA**XC3S250E-4FTG256I**AMD
IC FPGA 172 I/O 256FTBGA**XC3S250E-5FT256C**Xilinx Inc.
IC FPGA 172 I/O 256FTBGA**XC3S250E-5PQG208C**AMD
IC FPGA 158 I/O 208QFP**XC3S250E-5TQG144C**AMD
IC FPGA 108 I/O 144TQFP**XC3S250E-4PQG208C**AMD
IC FPGA 158 I/O 208QFP**XC3S250E-4VQG100C**AMD
IC FPGA 66 I/O 100VQFP**XC3S250E-4VQG100I**AMD
IC FPGA 66 I/O 100VQFP**XC3S250E-5CPG132C**Xilinx Inc.
IC FPGA 92 I/O 132CSBGA

Shipment

Delivery Time

In-stock items can be shipped within 24 hours. Some parts will be arranged for delivery within 1-2 days from the date all items arrive at our warehouse. And Allelco ships order once a day at about 17:00, except Sunday. Once the goods are shipped, the estimated delivery time depends on the shipping methods and Delivery destination. The table below shows are the logistic time for some common countries.

Delivery Cost

> Use your express account for shipment if you have one.

> Use our account for the shipment. Refer to the table below for the approximate charges.

(Different time frame / countries / package size has different price.)

Delivery Method

> Global Common Shipment by DHL / UPS / FedEx / TNT / EMS / SF we support.

> Others more shipping ways, please get in touch with your customer manager.

Common Countries Logistic Time Reference

| Region | Country | Logistic Time(Day) |
|-------------|----------------|--------------------|
| America | United States | 5 |
| | Brazil | 7 |
| Europe | Germany | 5 |
| | United Kingdom | 4 |
| | Italy | 5 |
| Oceania | Australia | 6 |
| | New Zealand | 7 |
| Asia | India | 6 |
| | Japan | 7 |
| Middle East | Israel | 6 |

DHL & FedEx Shipment Charges Reference

| Shipment charges(KG) | Reference DHL(USD\$) |
|----------------------|----------------------|
| 0.00kg-1.00kg | USD\$60.00 |
| 1.00kg-2.00kg | USD\$70.00 |
| 2.00kg-3.00kg | USD\$80.00 |

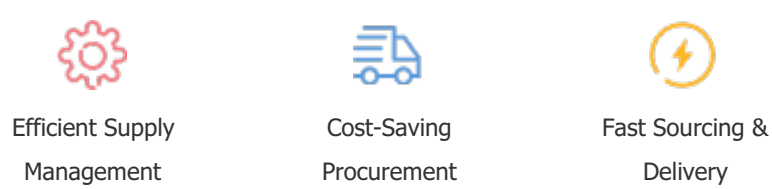
Note: The above table is for reference only. There may have some data bias for the uncontrollable factors.
Contact us if you have any questions.

Payment Support

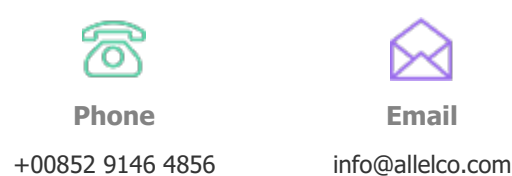
The payment method can be chosen from the methods shown below:
Wire Transfer (T/T, Bank Transfer), Western Union, Credit card, PayPal.



Your Faithful Supply Chain Partner -



Contact us if you have any questions.



Certifications & Memberships



[View More](#)



Contact us

Address: Flat/Rm C 13/F Harvard Commercial Building 105-111 Thomson Road, Wan Chai, Hong Kong

Phone: +00852 9146 4856

Fax: +00852 3010 8510

Email: info@Allelco.com

Copyright © 2012-2023 AllelcoElec.com. All rights reserved.