

Image may be representation.  
See specifications for product details.



## EP1S40F1020C5

Manufacturer Part Number	<b>EP1S40F1020C5</b>
Manufacturer	<b>Intel</b>
Allelco Part Number	32D-EP1S40F1020C5
ECAD Model	Request Free CAD Models
Parts Description	IC FPGA 773 I/O 1020FBGA
Package	1020-BBGA
Data sheet	<a href="#">Virtual JTAG Megafuntion Guide.pdf</a> <a href="#">896-FBGA Pkg Info.pdf</a> <a href="#">Stratix Device Datasheet.pdf</a> <a href="#">Stratix Device Handbook.pdf</a>

**Get a Quote**

EP1S40F1020C5 - Intel.New Original in Stock. Download Linear Technology EP1S40F1020C5 datasheet/specifications on AllelcoElec.com.  
Request a quote for EP1S40F1020C5, please send us email: [info@allelco.com](mailto:info@allelco.com)

### Specifications

EP1S40F1020C5 Tech Specifications

EP1S40F1020C5 - Intel technical specifications, attributes, parameters

Product Attribute	Attribute Value	Product Attribute	Attribute Value
Manufacturer	Intel	Operating Temperature	0°C ~ 85°C (TJ)
Voltage - Supply	1.425V ~ 1.575V	Number of Logic Elements/Cells	41250
Total RAM Bits	3423744	Number of LABs/CLBs	4125
Supplier Device Package	1020-FBGA (33x33)	Number of I/O	773
Series	Stratix®	Mounting Type	Surface Mount
Package / Case	1020-BBGA	Base Product Number	EP1S40
Package	Tray		

### Parts with Similar Specifications

The three parts on the right have similar specifications to Intel EP1S40F1020C5

Product Attribute				
Part Number	EP1S40F1020C5	EP1S40F1020C6	EP1S30F780I6	EP1S40F1020C6N
Manufacturer	Intel	Intel	Altera	Intel
Operating Temperature	0°C ~ 85°C (TJ)	0°C ~ 85°C (TJ)	-40°C ~ 100°C (TJ)	0°C ~ 85°C (TJ)
Supplier Device Package	1020-FBGA (33x33)	1020-FBGA (33x33)	780-FBGA (29x29)	1020-FBGA (33x33)
Base Product Number	EP1S40	EP1S40	EP1S30	EP1S40
Total RAM Bits	3423744	3423744	-	3423744
Mounting Type	Surface Mount	Surface Mount	Surface Mount	Surface Mount
Series	Stratix®	Stratix®	Stratix®	Stratix®
Package / Case	1020-BBGA	1020-BBGA	780-BBGA, FCBGA	1020-BBGA
Number of LABs/CLBs	4125	4125	-	4125
Number of I/O	773	773	597	773
Voltage - Supply	1.425V ~ 1.575V	1.425V ~ 1.575V	1.425V ~ 1.575V	1.425V ~ 1.575V
Package	Tray	Tray	Bulk	Tray
Number of Logic Elements/Cells	41250	41250	-	41250

### EP1S40F1020C5 Datasheet PDF

Download EP1S40F1020C5 pdf datasheets and Intel documentation for EP1S40F1020C5 - Intel.

#### Datasheets

Virtual JTAG Megafuntion Guide.pdf

896-FBGA Pkg Info.pdf

Stratix Device Datasheet.pdf

Stratix Device Handbook.pdf

#### PCN Packaging

All Dev Pkg Chg 1/Aug/2018.pdf

Mult Dev Dessicant Chg 19/Jul/2019.pdf

#### PCN Design/Specification

Mult Series Software Chgs 26/Mar/2020.pdf

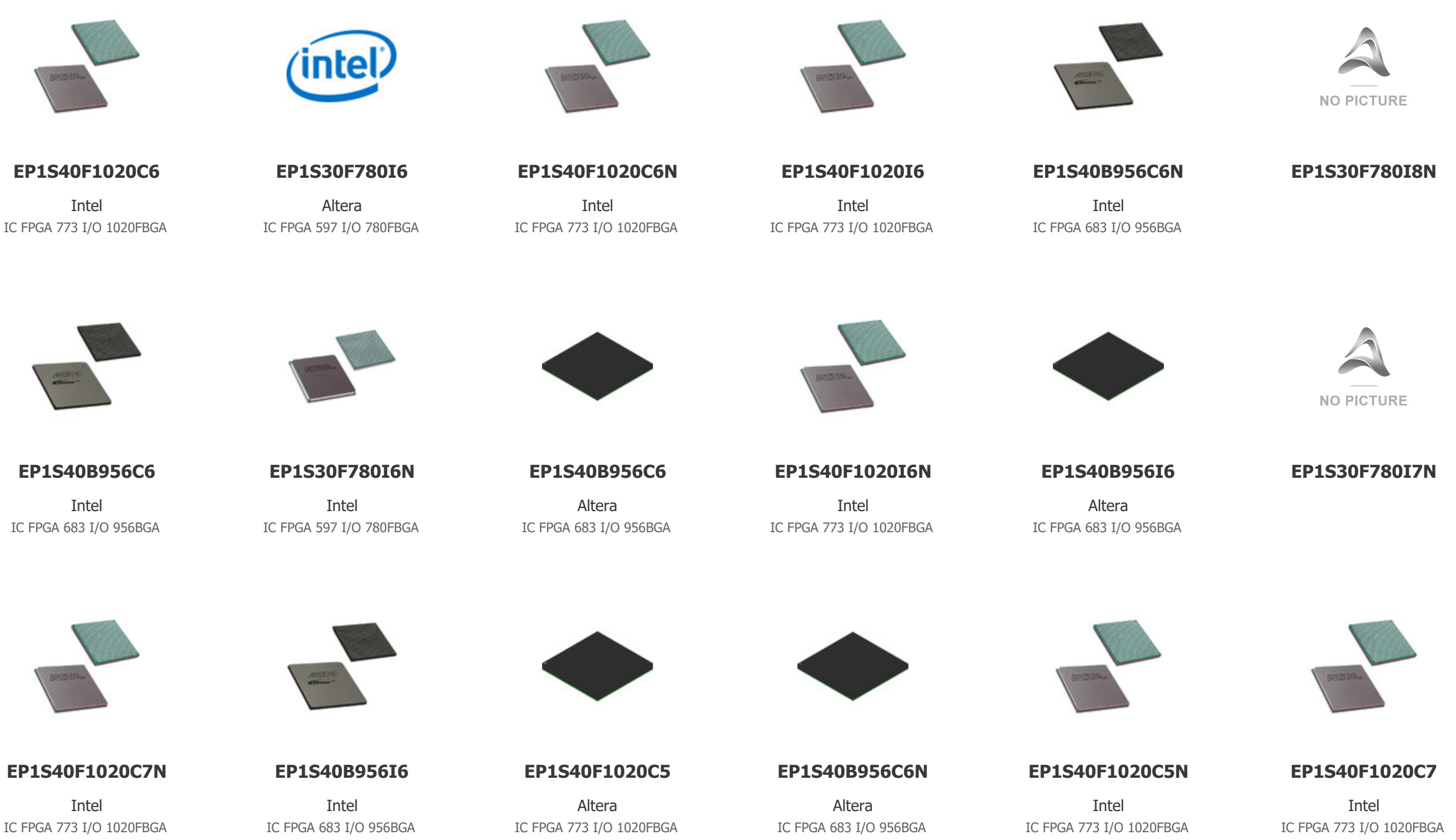
Package Height 03/March/2008.pdf

#### PCN Obsolescence/ EOL

Mult Device EOL 1/Jun/2017.pdf

### Customers Also Interested in

#### Recommended Products



**EP1S40F1020C6**  
Intel  
IC FPGA 773 I/O 1020FBGA

**EP1S30F780I6**  
Altera  
IC FPGA 597 I/O 780FBGA

**EP1S40F1020C6N**  
Intel  
IC FPGA 773 I/O 1020FBGA

**EP1S40F1020I6**  
Intel  
IC FPGA 773 I/O 1020FBGA

**EP1S40B956C6N**  
Intel  
IC FPGA 683 I/O 956BGA

**EP1S30F780I8N**

**EP1S40B956C6**  
Intel  
IC FPGA 683 I/O 956BGA

**EP1S30F780I6N**  
Intel  
IC FPGA 597 I/O 780FBGA

**EP1S40B956C6**  
Altera  
IC FPGA 683 I/O 956BGA

**EP1S40F1020I6N**  
Intel  
IC FPGA 773 I/O 1020FBGA

**EP1S40B956I6**  
Altera  
IC FPGA 683 I/O 956BGA

**EP1S30F780I7N**

**EP1S40F1020C7N**  
Intel  
IC FPGA 773 I/O 1020FBGA

**EP1S40B956I6**  
Intel  
IC FPGA 683 I/O 956BGA

**EP1S40F1020C5**  
Altera  
IC FPGA 773 I/O 1020FBGA

**EP1S40B956C6N**  
Altera  
IC FPGA 683 I/O 956BGA

**EP1S40F1020C5N**  
Intel  
IC FPGA 773 I/O 1020FBGA

**EP1S40F1020C7**  
Intel  
IC FPGA 773 I/O 1020FBGA

## Shipment

### Delivery Time

In-stock items can be shipped within 24 hours. Some parts will be arranged for delivery within 1-2 days from the date all items arrive at our warehouse. And Allelco ships order once a day at about 17:00, except Sunday. Once the goods are shipped, the estimated delivery time depends on the shipping methods and Delivery destination. The table below shows are the logistic time for some common countries.

### Delivery Cost

- > Use your express account for shipment if you have one.
  - > Use our account for the shipment. Refer to the table below for the approximate charges.
- (Different time frame / countries / package size has different price.)

### Delivery Method

- > Global Common Shipment by DHL / UPS / FedEx / TNT / EMS / SF we support.
- > Others more shipping ways, please get in touch with your customer manager.

Common Countries Logistic Time Reference		
Region	Country	Logistic Time(Day)
America	United States	5
	Brazil	7
Europe	Germany	5
	United Kingdom	4
	Italy	5
Oceania	Australia	6
	New Zealand	7
Asia	India	6
	Japan	7
Middle East	Israel	6

DHL & FedEx Shipment Charges Reference	
Shipment charges(KG)	Reference DHL(USD\$)
0.00kg-1.00kg	USD\$60.00
1.00kg-2.00kg	USD\$70.00
2.00kg-3.00kg	USD\$80.00

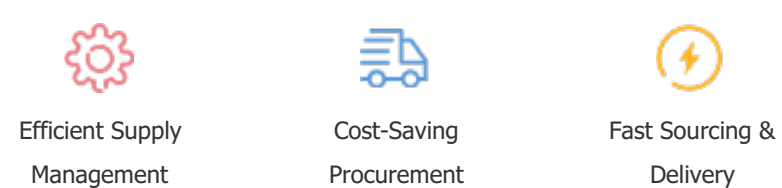
**Note:** The above table is for reference only. There may have some data bias for the uncontrollable factors.  
Contact us if you have any questions.

## Payment Support

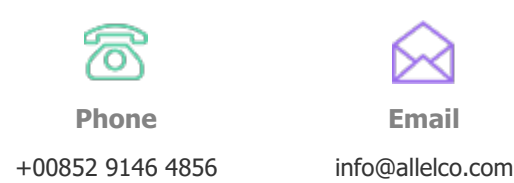
The payment method can be chosen from the methods shown below:  
Wire Transfer (T/T, Bank Transfer), Western Union, Credit card, PayPal.



## Your Faithful Supply Chain Partner -



Contact us if you have any questions.



## Certifications & Memberships



[View More](#)

### Contact us

Address: Flat/Rm C 13/F Harvard Commercial Building 105-111 Thomson Road, Wan Chai, Hong Kong

Phone: +00852 9146 4856

Fax: +00852 3010 8510

Email: info@Allelco.com