

Image may be representation.  
See specifications for product details.



## XC6SLX75T-2CSG484I

Manufacturer Part Number	<b>XC6SLX75T-2CSG484I</b>
Manufacturer	<b>AMD Xilinx</b>
Allelco Part Number	32D-XC6SLX75T-2CSG484I
ECAD Model	Request Free CAD Models
Parts Description	IC FPGA 292 I/O 484CSBGA
Package	484-FBGA, CSPBGA
Data sheet	XC6SLX75T-2CSG484I.pdf
RoHs Status	<b>ROHS3 Compliant</b>

**Get a Quote**

XC6SLX75T-2CSG484I - AMD.New Original in Stock. Download Linear Technology XC6SLX75T-2CSG484I datasheet/specifications on AllelcoElec.com.  
Request a quote for XC6SLX75T-2CSG484I, please send us email: [info@allelco.com](mailto:info@allelco.com)

### Specifications

XC6SLX75T-2CSG484I Tech Specifications  
XC6SLX75T-2CSG484I - AMD technical specifications, attributes, parameters

Product Attribute	Attribute Value	Product Attribute	Attribute Value
Manufacturer	AMD Xilinx	Operating Temperature	-40°C ~ 100°C (TJ)
Voltage - Supply	1.14V ~ 1.26V	Number of Logic Elements/Cells	74637
Total RAM Bits	3170304	Number of LABs/CLBs	5831
Supplier Device Package	484-CSPBGA (19x19)	Number of I/O	292
Series	Spartan®-6 LXT	Mounting Type	Surface Mount
Package / Case	484-FBGA, CSPBGA	Base Product Number	XC6SLX75
Package	Tray		

### Parts with Similar Specifications

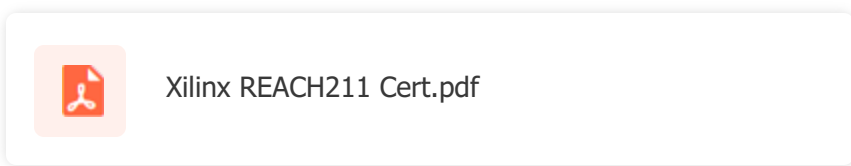
The three parts on the right have similar specifications to AMD XC6SLX75T-2CSG484I

Product Attribute				
Part Number	XC6SLX75T-2CSG484I	<b>XC6SLX75-3FGG676C</b>	<b>XC6SLX75-3FGG676I</b>	<b>XC6SLX75T-2CSG484C</b>
Manufacturer	AMD	AMD	AMD	AMD
Voltage - Supply	1.14V ~ 1.26V	1.14V ~ 1.26V	1.14V ~ 1.26V	1.14V ~ 1.26V
Number of LABs/CLBs	5831	5831	5831	5831
Supplier Device Package	484-CSPBGA (19x19)	676-FBGA (27x27)	676-FBGA (27x27)	484-CSPBGA (19x19)
Operating Temperature	-40°C ~ 100°C (TJ)	0°C ~ 85°C (TJ)	-40°C ~ 100°C (TJ)	0°C ~ 85°C (TJ)
Base Product Number	XC6SLX75	XC6SLX75	XC6SLX75	XC6SLX75
Total RAM Bits	3170304	3170304	3170304	3170304
Mounting Type	Surface Mount	Surface Mount	Surface Mount	Surface Mount
Number of Logic Elements/Cells	74637	74637	74637	74637
Number of I/O	292	408	408	292
Package	Tray	Tray	Tray	Tray
Series	Spartan®-6 LXT	Spartan®-6 LX	Spartan®-6 LX	Spartan®-6 LXT
Package / Case	484-FBGA, CSPBGA	676-BGA	676-BGA	484-FBGA, CSPBGA

### XC6SLX75T-2CSG484I Datasheet PDF

Download XC6SLX75T-2CSG484I pdf datasheets and AMD documentation for XC6SLX75T-2CSG484I - AMD.

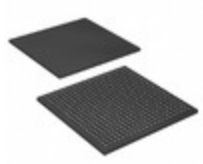
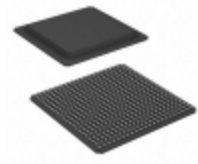
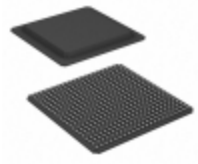
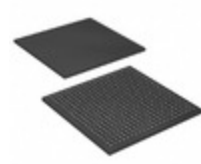
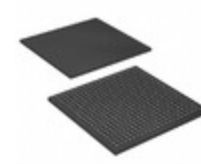
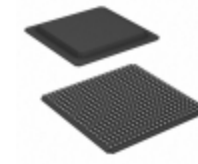
### Environmental Information



### Customers Also Interested in

#### Recommended Products

<b>XC6SLX75-3FGG676C</b>	<b>XC6SLX75-3FGG676I</b>	<b>XC6SLX75T-2CSG484C</b>	<b>XC6SLX75T-3FGG676C</b>	<b>XC6SLX75T-2FGG676C</b>	<b>XC6SLX75T-2FGG484C</b>
AMD IC FPGA 408 I/O 676FBGA	AMD IC FPGA 408 I/O 676FBGA	AMD IC FPGA 292 I/O 484CSBGA	AMD IC FPGA 348 I/O 676FBGA	AMD IC FPGA 348 I/O 676FBGA	AMD IC FPGA 268 I/O 484FBGA
<b>XC6SLX75-3CSG484I</b>	<b>XC6SLX75-L1CSG484I</b>	<b>XC6SLX75-L1FGG484C</b>	<b>XC6SLX75-L1FGG484I</b>	<b>XC6SLX75T-2FGG676I</b>	<b>XC6SLX75-3FGG484I</b>
AMD IC FPGA 328 I/O 484CSBGA	AMD IC FPGA 328 I/O 484CSBGA	AMD IC FPGA 280 I/O 484FBGA	AMD IC FPGA 280 I/O 484FBGA	AMD IC FPGA 348 I/O 676FBGA	AMD IC FPGA 280 I/O 484FBGA

**XC6SLX75T-3CSG484C**AMD  
IC FPGA 292 I/O 484CSBGA**XC6SLX75T-2FGG484I**AMD  
IC FPGA 268 I/O 484FBGA**XC6SLX75T-3FGG484C**AMD  
IC FPGA 268 I/O 484FBGA**XC6SLX75T-3CSG484I**AMD  
IC FPGA 292 I/O 484CSBGA**XC6SLX75-L1CSG484C**AMD  
IC FPGA 328 I/O 484CSBGA**XC6SLX75T-3FGG484I**AMD  
IC FPGA 268 I/O 484FBGA

## Shipment

### Delivery Time

In-stock items can be shipped within 24 hours. Some parts will be arranged for delivery within 1-2 days from the date all items arrive at our warehouse. And Allelco ships order once a day at about 17:00, except Sunday. Once the goods are shipped, the estimated delivery time depends on the shipping methods and Delivery destination. The table below shows are the logistic time for some common countries.

### Delivery Cost

> Use your express account for shipment if you have one.

> Use our account for the shipment. Refer to the table below for the approximate charges.

(Different time frame / countries / package size has different price.)

### Delivery Method

> Global Common Shipment by DHL / UPS / FedEx / TNT / EMS / SF we support.

> Others more shipping ways, please get in touch with your customer manager.

**Common Countries Logistic Time Reference**

Region	Country	Logistic Time(Day)
America	United States	5
	Brazil	7
Europe	Germany	5
	United Kingdom	4
	Italy	5
Oceania	Australia	6
	New Zealand	7
Asia	India	6
	Japan	7
Middle East	Israel	6

**DHL & FedEx Shipment Charges Reference**

Shipment charges(KG)	Reference DHL(USD\$)
0.00kg-1.00kg	USD\$60.00
1.00kg-2.00kg	USD\$70.00
2.00kg-3.00kg	USD\$80.00

Note: The above table is for reference only. There may have some data bias for the uncontrollable factors.  
Contact us if you have any questions.

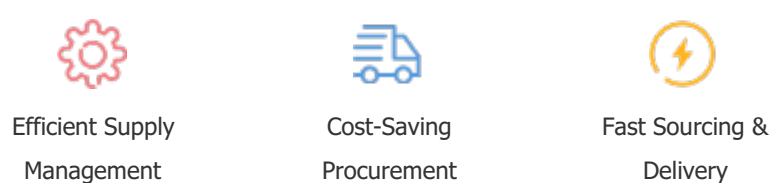
## Payment Support

The payment method can be chosen from the methods shown below:

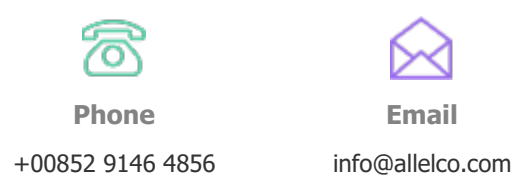
Wire Transfer (T/T, Bank Transfer), Western Union, Credit card, PayPal.



## Your Faithful Supply Chain Partner -



Contact us if you have any questions.



## Certifications & Memberships



[View More](#)



### Contact us

Address: Flat/Rm C 13/F Harvard Commercial Building 105-111 Thomson Road, Wan Chai, Hong Kong

Phone: +00852 9146 4856

Fax: +00852 3010 8510

Email: info@Allelco.com

Copyright © 2012-2023 AllelcoElec.com. All rights reserved.