



Image may be representation.  
See specifications for product details.



## SM6T10CA

Manufacturer Part Number	<b>SM6T10CA</b>
Manufacturer	<b>STMicroelectronics</b>
Allelco Part Number	32D-SM6T10CA
ECAD Model	PCB Symbol, Footprint & 3D Mode
Parts Description	TVS DIODE 8.55VWM 18.6VC SMB
Package	DO-214AA, SMB
Data sheet	<b>SM6T.pdf</b>
RoHs Status	ROHS3 Compliant

**Get a Quote**

SM6T10CA - STMicroelectronics.New Original in Stock. Download Linear Technology SM6T10CA datasheet/specifications on AllelcoElec.com.  
Request a quote for SM6T10CA, please send us email: [info@allelco.com](mailto:info@allelco.com)

### Specifications

SM6T10CA Tech Specifications  
SM6T10CA - STMicroelectronics technical specifications, attributes, parameters

Product Attribute	Attribute Value	Product Attribute	Attribute Value
Manufacturer	STMicroelectronics	Package / Case	DO-214AA, SMB
Voltage - Reverse Standoff (Typ)	8.55V	Package	Tape & Reel (TR)
Voltage - Clamping (Max) @ Ipp	18.6V	Operating Temperature	-55°C ~ 150°C (TJ)
Voltage - Breakdown (Min)	9.5V	Mounting Type	Surface Mount
Type	Zener	Current - Peak Pulse (10/1000µs)	215A (8/20µs)
Supplier Device Package	SMB (DO-214AA)	Capacitance @ Frequency	-
Series	SM6T, TRANSIL™	Bidirectional Channels	1
Power Line Protection	No	Base Product Number	SM6T10
Power - Peak Pulse	600W	Applications	General Purpose

### Parts with Similar Specifications

The three parts on the right have similar specifications to STMicroelectronics SM6T10CA

Product Attribute				
Part Number	SM6T10CA	SM6T100CA-E3/52	SM6T12CA-E3/52	SM6T12CA
Manufacturer	STMicroelectronics	Vishay General Semiconductor - Diodes Division	Vishay General Semiconductor - Diodes Division	STMicroelectronics
Current - Peak Pulse (10/1000µs)	215A (8/20µs)	4.4A	36A	184A (8/20µs)
Package / Case	DO-214AA, SMB	DO-214AA, SMB	DO-214AA, SMB	DO-214AA, SMB
Applications	General Purpose	General Purpose	General Purpose	General Purpose
Capacitance @ Frequency	-	-	-	-
Package	Tape & Reel (TR)	Tape & Reel (TR)	Tape & Reel (TR)	Tape & Reel (TR)
Voltage - Clamping (Max) @ Ipp	18.6V	137V	16.7V	21.7V
Type	Zener	Zener	Zener	Zener
Voltage - Breakdown (Min)	9.5V	95V	11.4V	11.4V
Series	SM6T, TRANSIL™	SM6T, TransZorb®	SM6T, TransZorb®	SM6T, TRANSIL™
Supplier Device Package	SMB (DO-214AA)	DO-214AA (SMBJ)	DO-214AA (SMBJ)	SMB (DO-214AA)
Mounting Type	Surface Mount	Surface Mount	Surface Mount	Surface Mount
Bidirectional Channels	1	1	1	1
Power Line Protection	No	No	No	No
Voltage - Reverse Standoff (Typ)	8.55V	85.5V	10.2V	10.2V
Power - Peak Pulse	600W	600W	600W	600W
Operating Temperature	-55°C ~ 150°C (TJ)	-65°C ~ 150°C (TJ)	-65°C ~ 150°C (TJ)	-55°C ~ 150°C (TJ)
Base Product Number	SM6T10	SM6T100	SM6T12	SM6T12

### SM6T10CA Datasheet PDF

Download SM6T10CA pdf datasheets and STMicroelectronics documentation for SM6T10CA - STMicroelectronics.

#### PCN Packaging

Box Label Chg 28/Jul/2016.pdf

#### HTML Datasheet

SM6T.pdf

#### Other Related Documents

SM6T View All Specifications.pdf

#### PCN Assembly/Origin



## Customers Also Interested in

### Recommended Products

					
<b>SM6T100CA-E3/52</b> Vishay General Semiconductor - Diodes Division TVS DIODE 85.5VWM 137VC DO214AA	<b>SM6S36ATHE3_A/I</b> Electro-Films (EFI) / Vishay	<b>SM6T12A-TR</b> STMicroelectronics	<b>SM6T10A-TR</b> STMicroelectronics	<b>SM6T12CA-E3/52</b> Vishay General Semiconductor - Diodes Division TVS DIODE 10.2VWM 16.7VC DO214AA	<b>SM6T12CA</b> STMicroelectronics TVS DIODE 10.2VWM 21.7VC SMB
					
<b>SM6T100CA</b> STMicroelectronics TVS DIODE 85.5VWM 178VC SMB	<b>SM6T12A-E3/52</b> Vishay General Semiconductor - Diodes Division TVS DIODE 10.2VWM 16.7VC DO214AA	<b>SM6T100CA-TR</b> STMicroelectronics	<b>SM6T12A</b> STMicroelectronics TVS DIODE 10.2VWM 21.7VC SMB	<b>SM6T13A</b> SUNMATE	<b>SM6T100A</b> STMicroelectronics TVS DIODE 85.5VWM 178VC SMB
					
<b>SM6T100A-TR</b> STMicroelectronics	<b>SM6T10CA-E3/52</b> Vishay General Semiconductor - Diodes Division TVS DIODE 8.55VWM 14.5VC DO214AA	<b>SM6T12CA-TR</b> STMicroelectronics	<b>SM6T10A/DP</b> STMicroelectronics	<b>SM6T10A</b> STMicroelectronics TVS DIODE 8.55VWM 18.6VC SMB	<b>SM6T100A-E3/52</b> Vishay General Semiconductor - Diodes Division TVS DIODE 85.5VWM 137VC DO214AA

## Shipment

### Delivery Time

In-stock items can be shipped within 24 hours. Some parts will be arranged for delivery within 1-2 days from the date all items arrive at our warehouse. And Alleco ships order once a day at about 17:00, except Sunday. Once the goods are shipped, the estimated delivery time depends on the shipping methods and Delivery destination. The table below shows are the logistic time for some common countries.

### Delivery Cost

> Use your express account for shipment if you have one.

> Use our account for the shipment. Refer to the table below for the approximate charges.

(Different time frame / countries / package size has different price.)

### Delivery Method

> Global Common Shipment by DHL / UPS / FedEx / TNT / EMS / SF we support.

> Others more shipping ways, please get in touch with your customer manager.

Common Countries Logistic Time Reference		
Region	Country	Logistic Time(Day)
America	United States	5
	Brazil	7
Europe	Germany	5
	United Kingdom	4
	Italy	5
Oceania	Australia	6
	New Zealand	7
Asia	India	6
	Japan	7
Middle East	Israel	6

DHL & FedEx Shipment Charges Reference	
Shipment charges(KG)	Reference DHL(USD\$)
0.00kg-1.00kg	USD\$60.00
1.00kg-2.00kg	USD\$70.00
2.00kg-3.00kg	USD\$80.00

**Note:** The above table is for reference only. There may have some data bias for the uncontrollable factors.

Contact us if you have any questions.

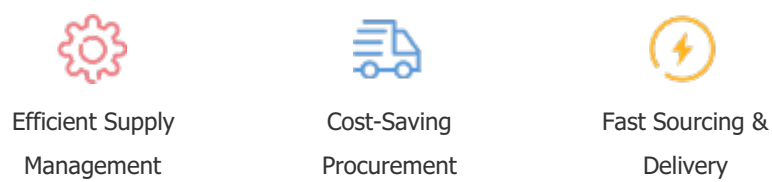
### Payment Support

The payment method can be chosen from the methods shown below:

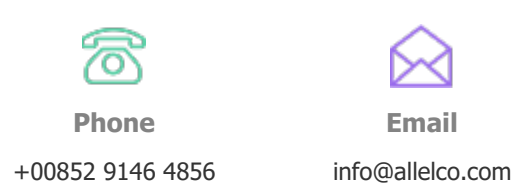
Wire Transfer (T/T, Bank Transfer), Western Union, Credit card, PayPal.



### Your Faithful Supply Chain Partner -



Contact us if you have any questions.



### Certifications & Memberships



View More