

Image may be representation.  
See specifications for product details.



## AT24C16A-10TU-2.7

Manufacturer Part Number	<b>AT24C16A-10TU-2.7</b>
Manufacturer	<b>Microchip Technology</b>
Allelco Part Number	32D-AT24C16A-10TU-2.7
ECAD Model	Request Free CAD Models
Parts Description	IC EEPROM 16KBIT I2C 8TSSOP
Package	8-TSSOP (0.173", 4.40mm Width)
Data sheet	<b>AT24C01A, 02, 04, 08A, 16A.pdf</b>
RoHs Status	<b>ROHS3 Compliant</b>

**Get a Quote**

AT24C16A-10TU-2.7 - Microchip Technology. New Original in Stock. Download Linear Technology AT24C16A-10TU-2.7 datasheet/specifications on AllelcoElec.com. Request a quote for AT24C16A-10TU-2.7, please send us email: [info@allelco.com](mailto:info@allelco.com)

### Specifications

AT24C16A-10TU-2.7 Tech Specifications  
AT24C16A-10TU-2.7 - Microchip Technology technical specifications, attributes, parameters

Product Attribute	Attribute Value	Product Attribute	Attribute Value
Manufacturer	Microchip Technology	Mounting Type	Surface Mount
Write Cycle Time - Word, Page	5ms	Memory Type	Non-Volatile
Voltage - Supply	2.7V ~ 5.5V	Memory Size	16Kbit
Technology	EEPROM	Memory Organization	2K x 8
Supplier Device Package	8-TSSOP	Memory Interface	I <sup>2</sup> C
Series	-	Memory Format	EEPROM
Package / Case	8-TSSOP (0.173", 4.40mm Width)	Clock Frequency	400 kHz
Package	Tube	Base Product Number	AT24C16
Operating Temperature	-40°C ~ 85°C (TA)	Access Time	900 ns

### Parts with Similar Specifications

The three parts on the right have similar specifications to Microchip Technology AT24C16A-10TU-2.7

Product Attribute				
Part Number	AT24C16A-10TU-2.7	AT24C164-10SI-2.7	AT24C16AN-10SI-1.8	AT24C164-10SU-2.7
Manufacturer	Microchip Technology	Microchip Technology	Microchip Technology	Microchip Technology
Supplier Device Package	8-TSSOP	8-SOIC	8-SOIC	8-SOIC
Mounting Type	Surface Mount	Surface Mount	Surface Mount	Surface Mount
Memory Size	16Kbit	16Kbit	16Kbit	16Kbit
Operating Temperature	-40°C ~ 85°C (TA)	-40°C ~ 85°C (TA)	-40°C ~ 85°C (TA)	-40°C ~ 85°C (TA)
Technology	EEPROM	EEPROM	EEPROM	EEPROM
Memory Organization	2K x 8	2K x 8	2K x 8	2K x 8
Package / Case	8-TSSOP (0.173", 4.40mm Width)	8-SOIC (0.154", 3.90mm Width)	8-SOIC (0.154", 3.90mm Width)	8-SOIC (0.154", 3.90mm Width)
Memory Format	EEPROM	EEPROM	EEPROM	EEPROM
Series	-	-	-	-
Memory Type	Non-Volatile	Non-Volatile	Non-Volatile	Non-Volatile
Package	Tube	Tube	Tube	Tube
Memory Interface	I <sup>2</sup> C	I <sup>2</sup> C	I <sup>2</sup> C	I <sup>2</sup> C
Voltage - Supply	2.7V ~ 5.5V	2.7V ~ 5.5V	1.8V ~ 5.5V	2.7V ~ 5.5V
Access Time	900 ns	900 ns	4.5 μs	900 ns
Base Product Number	AT24C16	AT24C164	AT24C16	AT24C164
Clock Frequency	400 kHz	400 kHz	400 kHz	400 kHz
Write Cycle Time - Word, Page	5ms	10ms	5ms	10ms

### AT24C16A-10TU-2.7 Datasheet PDF

Download AT24C16A-10TU-2.7 pdf datasheets and Microchip Technology documentation for AT24C16A-10TU-2.7 - Microchip Technology.

#### Datasheets

AT24C01A, 02, 04, 08A, 16A.pdf

#### PCN Packaging

Transfer to Microchip/Label/Pkg 5/Sep/2016.pdf

### Customers Also Interested in

#### Recommended Products



**AT24C16A-10PI-2.7**  
Atmel (Microchip Technology)



**AT24C16AN-10SI-1.8**  
Microchip Technology  
IC EEPROM 16KBIT I2C 8SOIC



**AT24C16A-10T**  
Atmel (Microchip Technology)



**AT24C16A-10TI-2.7**  
Microchip Technology  
IC EEPROM 16KBIT I2C 8TSSOP



**AT24C16A-PU**  
Atmel (Microchip Technology)



**AT24C164-10SU-2.7**  
Microchip Technology  
IC EEPROM 16KBIT I2C 8SOIC

**AT24C16AN**  
Atmel (Microchip Technology)

**AT24C16A-10PC-2.7**  
Atmel (Microchip Technology)

**AT24C16AN-10SE-2.7**  
Atmel (Microchip Technology)



**AT24C16A-10TI-1.8**  
Microchip Technology  
IC EEPROM 16KBIT I2C 8TSSOP



**AT24C16AN-10SI-2.7**  
Microchip Technology  
IC EEPROM 16KBIT I2C 8SOIC



**AT24C16A-10PU-2.7**  
Microchip Technology  
IC EEPROM 16KBIT I2C 400KHZ 8DIP



**AT24C16AN-10PU-2.7**  
Atmel (Microchip Technology)



**AT24C16A-10TU-1.8**  
Microchip Technology  
IC EEPROM 16KBIT I2C 8TSSOP

## Shipment

### Delivery Time

In-stock items can be shipped within 24 hours. Some parts will be arranged for delivery within 1-2 days from the date all items arrive at our warehouse. And Allelco ships order once a day at about 17:00, except Sunday. Once the goods are shipped, the estimated delivery time depends on the shipping methods and Delivery destination. The table below shows are the logistic time for some common countries.

### Delivery Cost

- > Use your express account for shipment if you have one.
  - > Use our account for the shipment. Refer to the table below for the approximate charges.
- (Different time frame / countries / package size has different price.)

### Delivery Method

- > Global Common Shipment by DHL / UPS / FedEx / TNT / EMS / SF we support.
- > Others more shipping ways, please get in touch with your customer manager.

Common Countries Logistic Time Reference		
Region	Country	Logistic Time(Day)
America	United States	5
	Brazil	7
Europe	Germany	5
	United Kingdom	4
	Italy	5
Oceania	Australia	6
	New Zealand	7
Asia	India	6
	Japan	7
Middle East	Israel	6

DHL & FedEx Shipment Charges Reference	
Shipment charges(KG)	Reference DHL(USD\$)
0.00kg-1.00kg	USD\$60.00
1.00kg-2.00kg	USD\$70.00
2.00kg-3.00kg	USD\$80.00

Note: The above table is for reference only. There may have some data bias for the uncontrollable factors.  
Contact us if you have any questions.

## Payment Support

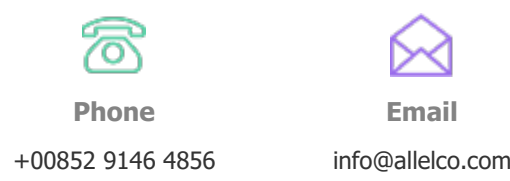
The payment method can be chosen from the methods shown below:  
Wire Transfer (T/T, Bank Transfer), Western Union, Credit card, PayPal.



## Your Faithful Supply Chain Partner -



Contact us if you have any questions.



## Certifications & Memberships



[View More](#)